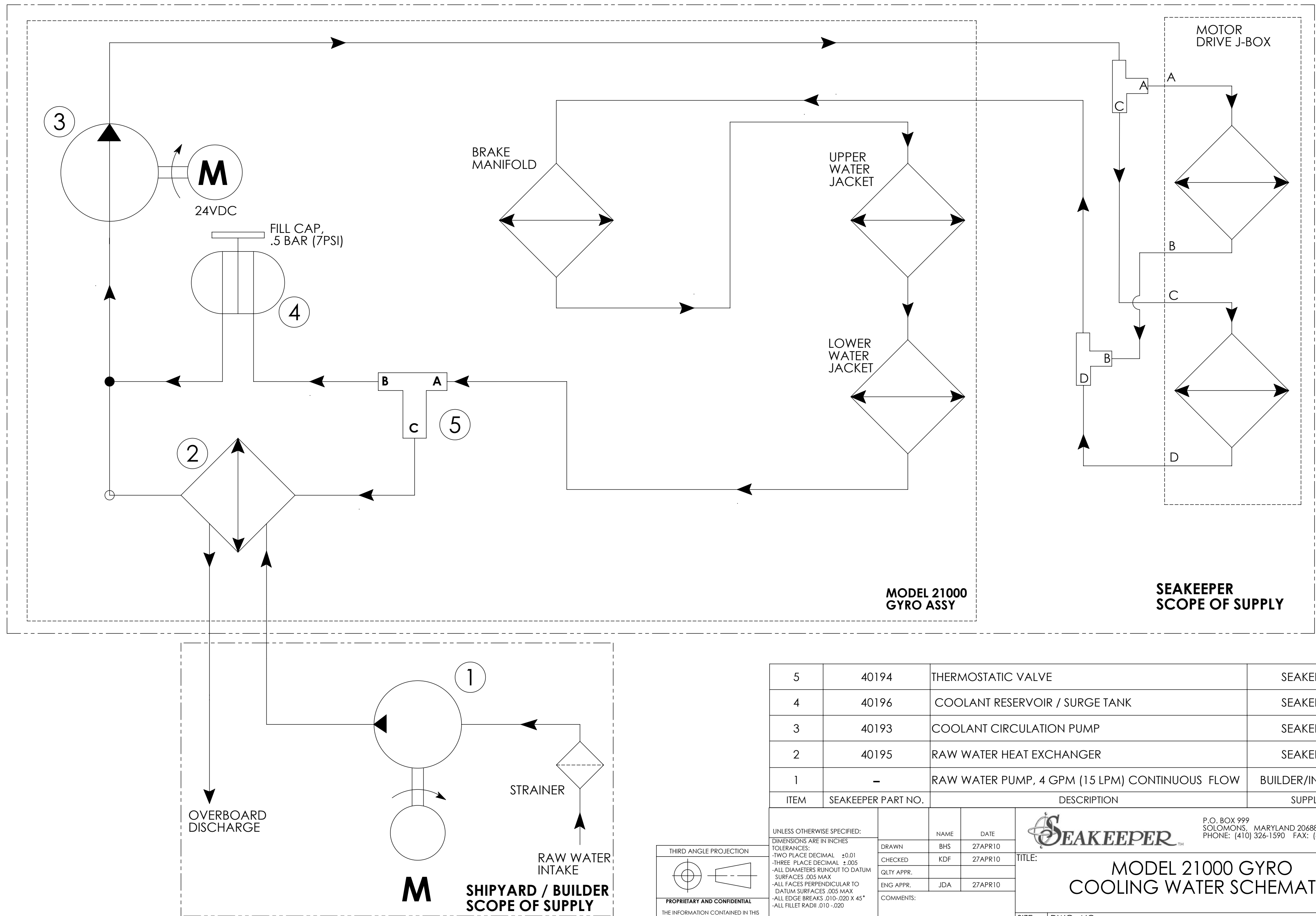


NOTES:

- 1) THE "FRESH WATER" COOLANT CIRCUIT IS TO BE FILLED WITH A 50% ETHYLENE GLYCOL / 50% DISTILLED WATER MIXTURE. APPROXIMATELY 6 LITERS (1.5 GAL) OF MIXTURE IS REQUIRED TO FILL THE COOLANT CIRCUIT.
- 2) BOAT BUILDER TO SUPPLY 15 LPM (4 GPM) SEA WATER COOLING AT A MAXIMUM PRESSURE OF 6.9 BAR (100 PSI) TO SEAKEEPER HEAT EXCHANGER WHENEVER GYRO IS IN OPERATION REGARDLESS OF BOAT SPEED.
- 3) CONNECTIONS FOR RAW WATER INLET /OUTLET ARE 3/4 INCH HOSE BARBS.



5	40194	THERMOSTATIC VALVE	SEAKEEPER
4	40196	COOLANT RESERVOIR / SURGE TANK	SEAKEEPER
3	40193	COOLANT CIRCULATION PUMP	SEAKEEPER
2	40195	RAW WATER HEAT EXCHANGER	SEAKEEPER
1	-	RAW WATER PUMP, 4 GPM (15 LPM) CONTINUOUS FLOW	BUILDER/INSTALLER
ITEM	SEAKEEPER PART NO.	DESCRIPTION	SUPPLIER

UNLESS OTHERWISE SPECIFIED: DIMENSIONS ARE IN INCHES TOLERANCES: -TWO PLACE DECIMAL ±0.01 -THREE PLACE DECIMAL ±.005 -ALL DIAMETERS RUNOUT TO DATUM SURFACES .005 MAX -ALL FACES PERPENDICULAR TO DATUM SURFACES .005 MAX -ALL EDGE BREAKS .010-.020 X 45° -ALL FILLET RADII .010-.020 -SURFACE FINISH		NAME: BHS DATE: 27APR10	<p>P.O. BOX 999 SOLOMONS, MARYLAND 20688, USA PHONE: (410) 326-1590 FAX: (410) 326-1199</p>
THIRD ANGLE PROJECTION	CHECKED: KDF DATE: 27APR10	TITLE: MODEL 21000 GYRO COOLING WATER SCHEMATIC	
PROPRIETARY AND CONFIDENTIAL THE INFORMATION CONTAINED IN THIS DRAWING IS THE SOLE PROPERTY OF SEAKEEPER, INC. ANY REPRODUCTION IN PART OR AS A WHOLE WITHOUT THE WRITTEN PERMISSION OF SEAKEEPER, INC. IS PROHIBITED.	ENG APPR: JDA DATE: 27APR10	REV 1	
DO NOT SCALE DRAWING	COMMENTS:	SIZE: C	DWG. NO.: 90090
		SCALE: 1:1	WEIGHT: SHEET 1 OF 1