

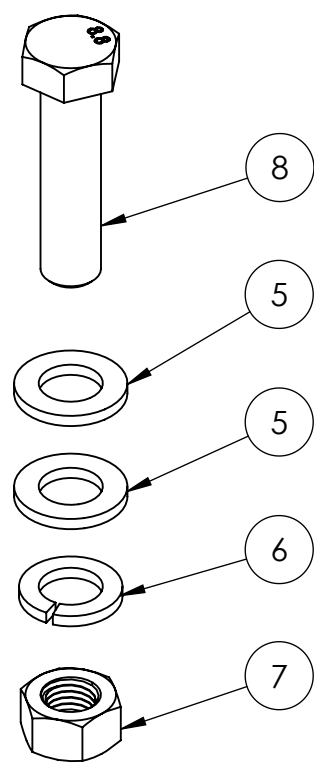
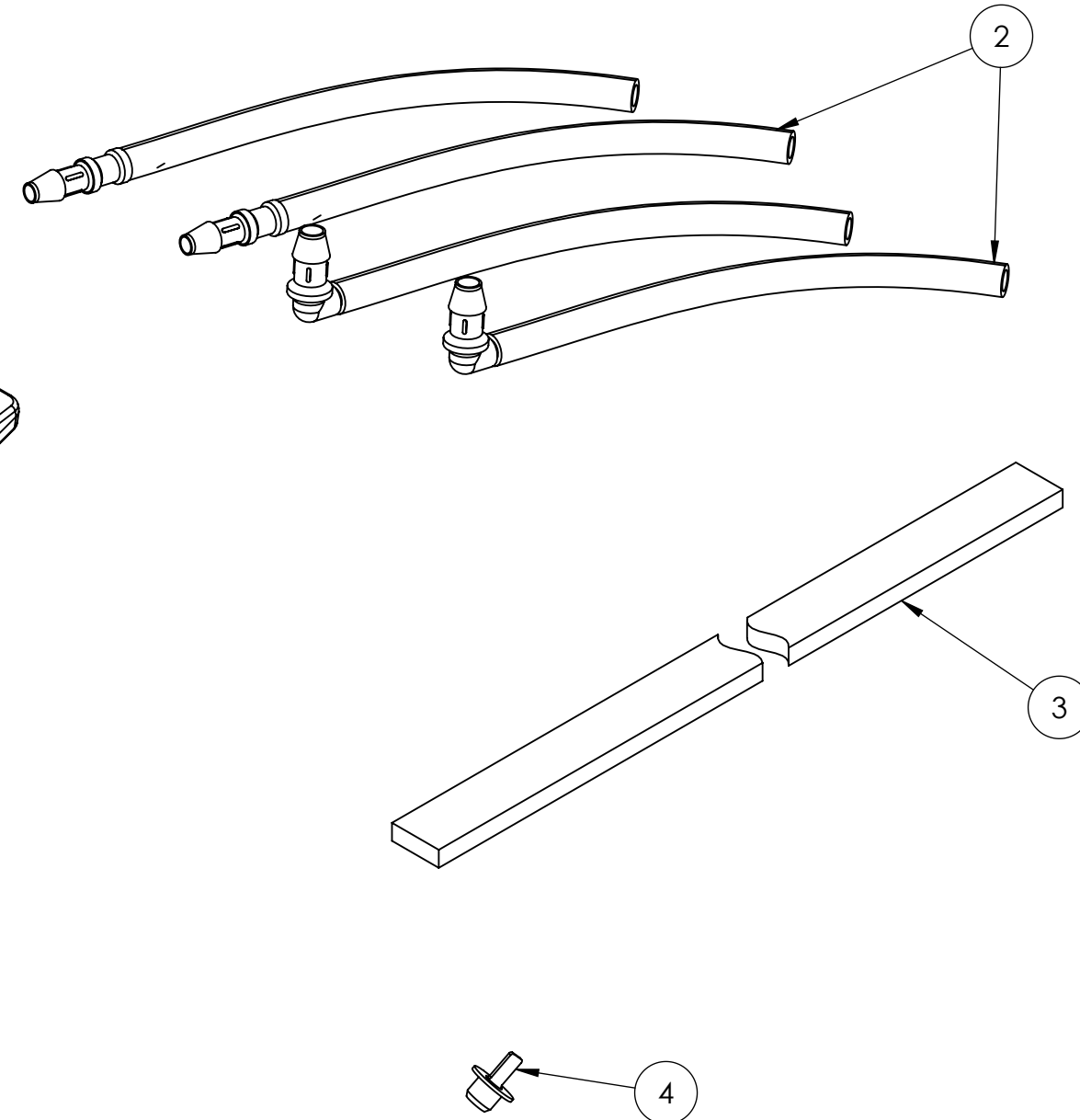
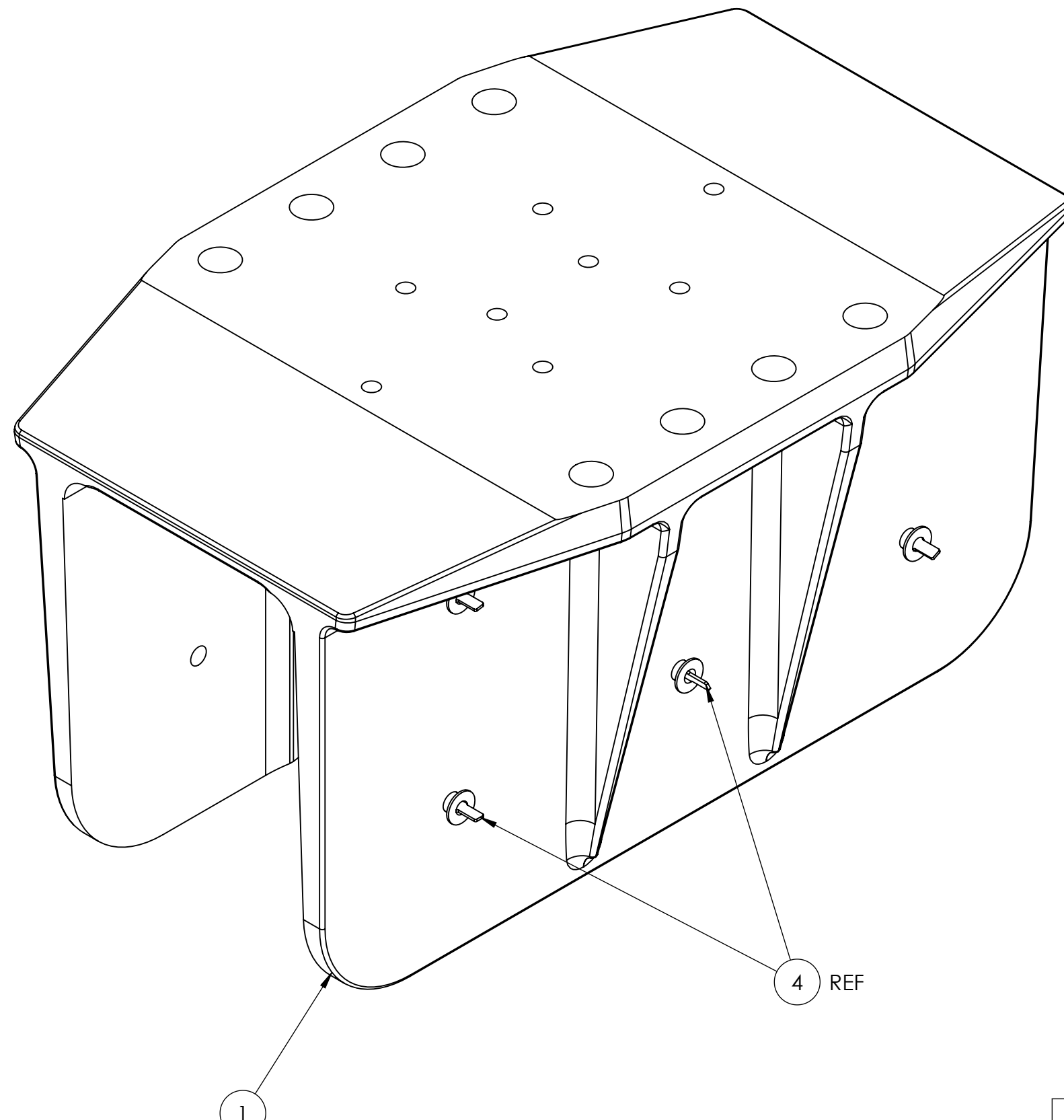
NOTES:

- 1) GYRO STABILIZER INSTALLER IS TO CAREFULLY REVIEW AND UNDERSTAND THE INSTALLATION MANUAL AND INSTALLATION DRAWING FOR THE GYRO MODEL BEING INSTALLED PRIOR TO SETTING TO WORK.
- 2) SADDLE INSTALLATION FIXTURE KIT, P/N 90088, IS REQUIRED FOR BONDING PROCESS TO ACHIEVE PROPER SADDLE ALIGNMENT AND SPACING.

REV.		ECN NO.		ZONE		REVISIONS		DATE		APPROVED	
2		298				INJECTION KIT ADDED		3/13/2015		BRD	

F
E
D
C
B
A

F
E
D
C
B
A



8X LOCATIONS PER SADDLE

ITEM NO.	PART NO.	DESCRIPTION	MATERIAL	QTY.
8	60181	SCREW, HEX HD CAP M16-2.0 X 65MM FULL TD	ZINC PLTD 8.8	33
7	60180	NUT, FULL HEX, M16-2.0	ZINC PLTD 8.8	33
6	60173	WASHER, SPLIT LOC, M16	ZINC PLTD	33
5	60170	WASHER, FLAT, M16 X 30MM-OD	ZINC PLTD	66
4	40264	PLUG, ADHESIVE INJECTION HOLE, BLUE	RUBBER	50
3	40234	FOAM, ADHESIVE BACKED, .25 THK X .75 WIDE, 17 FT LENGTH	POLYURETHANE	1
2	11281	ADHESIVE INJECTION NOZZLE FITTING AND TUBE KIT		2
1	10998	SEAKEEPER 35, FINISH MACHINED SADDLE	A356-T6 ALUM	4

PROPRIETARY AND CONFIDENTIAL
 THE INFORMATION CONTAINED IN THIS DRAWING IS THE SOLE PROPERTY OF SEAKEEPER INCORPORATED. ANY REPRODUCTION IN PART OR AS A WHOLE WITHOUT THE WRITTEN PERMISSION OF SEAKEEPER IS PROHIBITED.

SEAKEEPER
 Seakeeper Inc. 44425 Pecan Court, Suite 151 California, MD 20619

NAME: **BOND-IN SADDLE KIT**

WEIGHT - LBS: ---
 MATERIAL: ---

DRAWN: PRA DATE: 11 MAR 2015
 ENG APPR: BRD DATE: 11 MAR 2015
 PROD APPR: --- DATE: ---

DWG NUMBER: **90287** REV. NO. SHEET NO.: **2** 1 OF 1

8 7 6 5 4 3 2 1