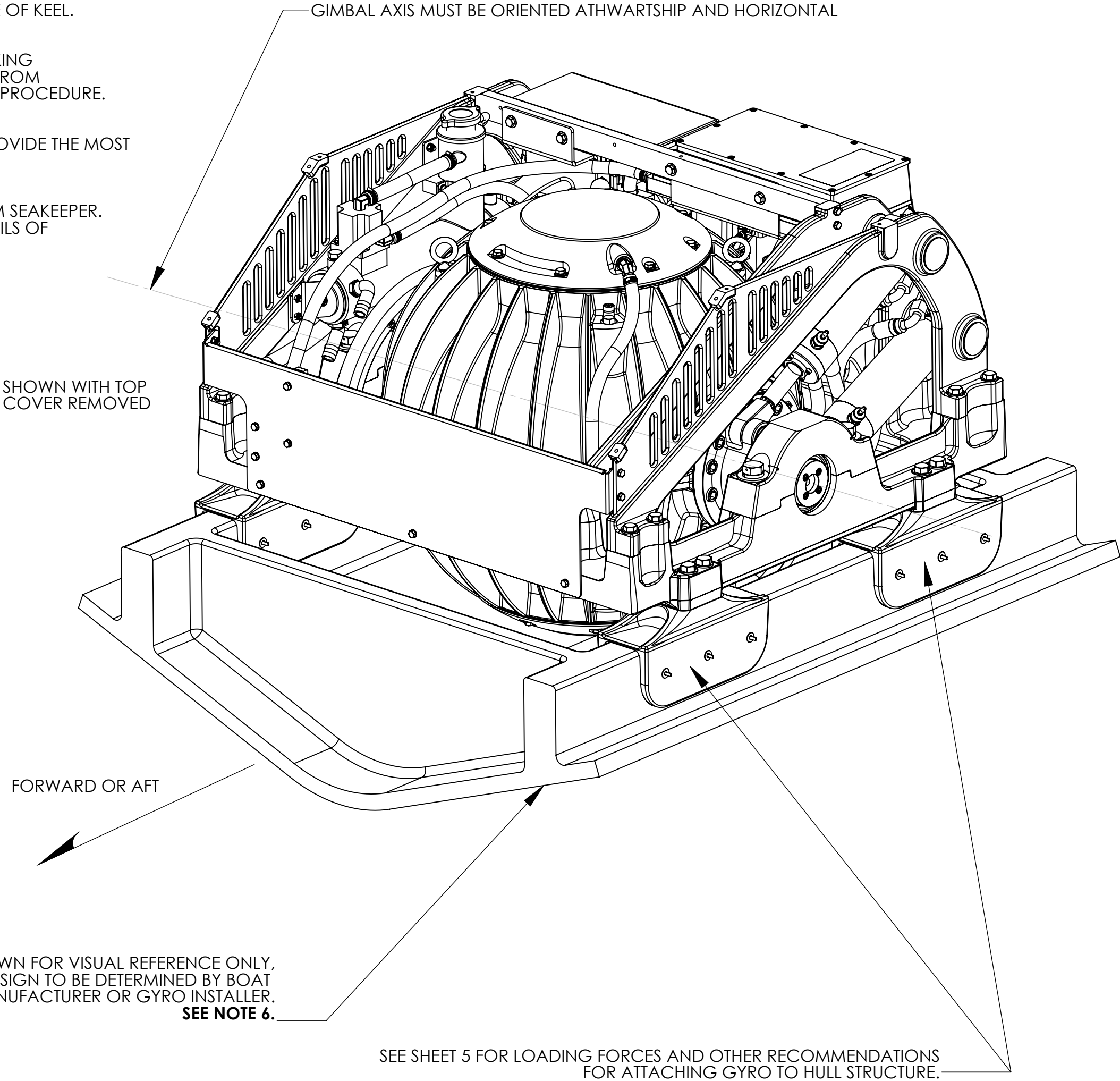
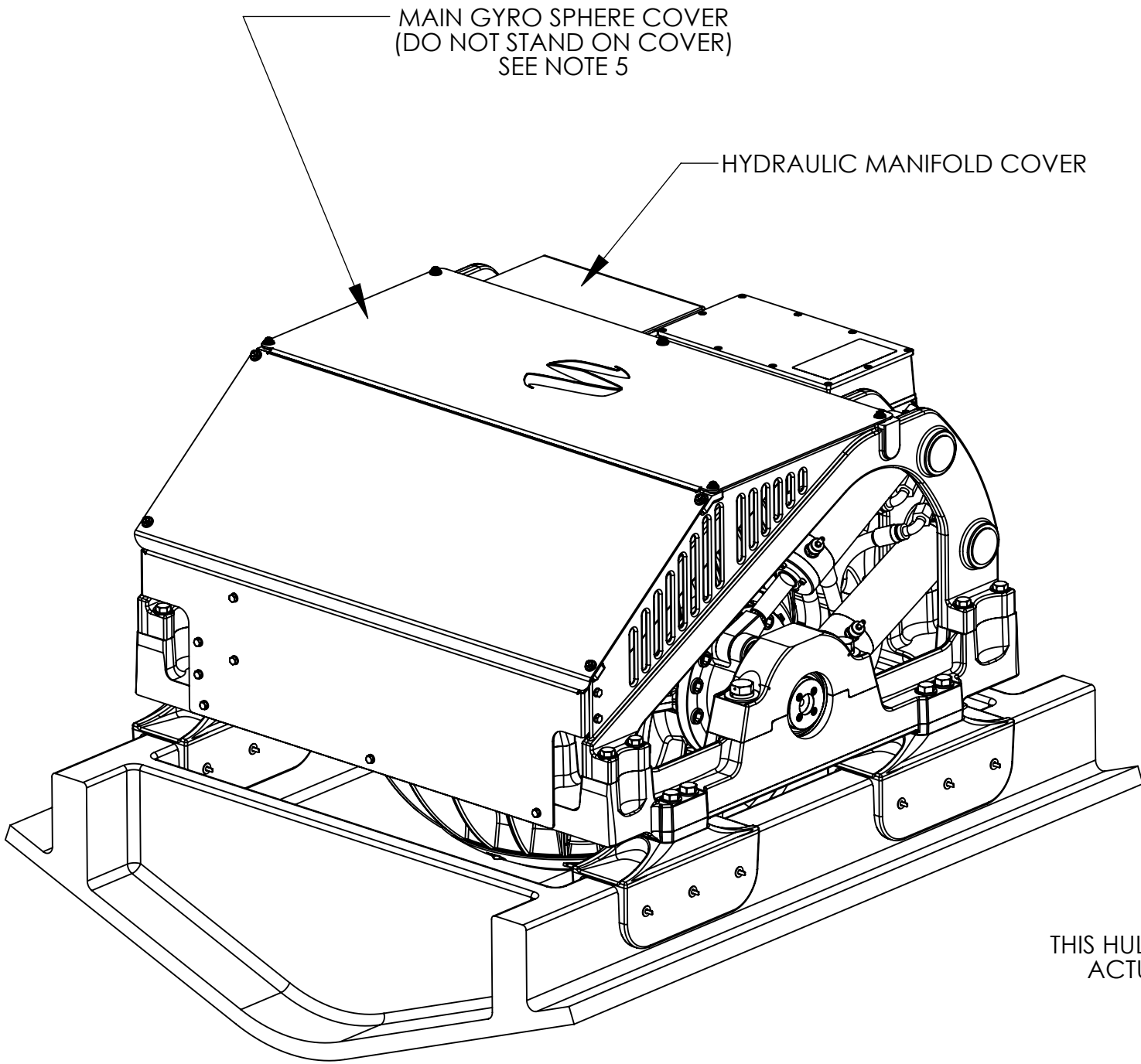


- NOTES:
- 1) SEE REFERENCES 1 THROUGH 5 FOR RELATED INSTALLATION MANUAL AND ELECTRICAL / ELECTRONIC AND COOLING CIRCUIT DRAWINGS.
 - 2) GYRO ASSEMBLY WEIGHT WITH FLUIDS AND BOND-IN SADDLES = 1,238 LBS. (561.5 Kg)
 - 3) RAW WATER COOLING REQUIREMENT IS 15 LPM (4 GPM) MINIMUM AND 30 LPM (8 GPM) MAXIMUM CONTINUOUS FLOW. PROVIDED CONNECTIONS ARE 19mm (3/4" INCH) HOSE BARB. USE OF RAW WATER STRAINER IS REQUIRED.
 - 4) TWO LIFTING EYES ARE PROVIDED ON THE TOP OF THE GYRO SPHERE FOR USE WITH A CHAIN/SPREADER BAR (SEE SHEET 4) TOP COVER MUST BE REMOVED TO ACCESS LIFTING EYES.
 - 5) COVERS ARE PROVIDED TO PREVENT PERSONNEL OR EQUIPMENT ENTANGLEMENT WHILE GYRO IS IN OPERATION. THESE COVERS ARE NOT TO BE STOOD ON OR TO HAVE ANYTHING STORED ON TOP OF. SEAKEEPER RECOMMENDS THE COVERS TO ALWAYS BE IN PLACE DURING OPERATION.
 - 6) THE GYRO MUST BE INSTALLED AFT OF AMIDSHIP TO MINIMIZE HIGH ACCELERATION LOADING DUE TO HULL/WAVE IMPACTS DURING OPERATION AT HIGH SPEED OR IN LARGE WAVES. GYRO DOES **NOT** NEED TO BE MOUNTED ON CENTERLINE OF KEEL. GYRO SUPPORT STRUCTURE MUST BE PARALLEL TO VESSEL WATERLINE.
 - 7) ADHESIVE INJECTION HOLES ARE PROVIDED AS A SECONDARY MEANS TO ADD ADHESIVE IN AREAS THAT ARE LACKING ADHESIVE BETWEEN THE SADDLE SIDES AND HULL STRUCTURE. THE INJECTION PROCESS IS ONLY USED TO RECOVER FROM INADEQUATE OR UN-EVEN ADHESIVE APPLICATION. REFER TO INSTALLATION MANUAL FOR ADHESIVE INSTALLATION PROCEDURE. NO FASTENERS ARE TO BE USED IN THE INJECTION HOLES.
 - 8) GYRO MAY BE INSTALLED FACING FORWARD OR AFT AS SHOWN. GYRO ORIENTATION SHOULD BE SELECTED TO PROVIDE THE MOST ACCESSIBILITY FOR FUTURE SERVICE AND MAINTENANCE. INSTALLATION, START-UP, AND OPERATION IS THE SAME REGARDLESS OF GYRO ORIENTATION.
 - 9) WHEN INSTALLING GYRO SEAKEEPER RECOMMENDS USING A SADDLE LOCATION FIXTURE # 90237 AVAILABLE FROM SEAKEEPER. THIS FIXTURE WILL PROPERLY SPACE AND ALIGN SADDLES FOR THE BONDING PROCESS. SEE REFERENCE 5 FOR DETAILS OF INSTALLATION PROCESS.



REF.	DWG. NO.	DWG. TITLE
1	90251	SEAKEEPER 9 GYRO COOLING WATER SCHEMATIC
2	90257	SEAKEEPER 9 GYRO CABLE BLOCK DIAGRAM
3	90337	OPERATOR DISPLAY ENVELOPE & MOUNTING DETAILS
4	90237	SEAKEEPER 9 GYRO INSTALLATION FIXTURE KIT
5	90222	SEAKEEPER 9 GYRO INSTALLATION MANUAL

- SHEET 2 - GYRO FOUNDATION DIMENSIONS.**
- SHEET 3 - RECOMMENDED CLEARANCES TO HULL STRUCTURE.**
- SHEET 4 - RECOMMENDED LIFTING POINTS.**
- SHEET 5 - GYRO LOADS FOR HULL STRUCTURE DESIGN.**

WEIGHT - LBS : ---

MATERIAL: ---

PROPRIETARY AND CONFIDENTIAL

THE INFORMATION CONTAINED IN THIS DRAWING IS THE SOLE PROPERTY OF SEAKEEPER INCORPORATED. ANY REPRODUCTION IN PART OR AS A WHOLE WITHOUT THE WRITTEN PERMISSION OF SEAKEEPER IS PROHIBITED.

DRAWN: SAC
ENG APPR: RSK
PROD APPR: ---
DATE: 27NOV13
DATE: 03MAR14
DATE: ---



NAME: SEAKEEPER 9 - 7HD GYRO, BOND-IN INSTALLATION GUIDE

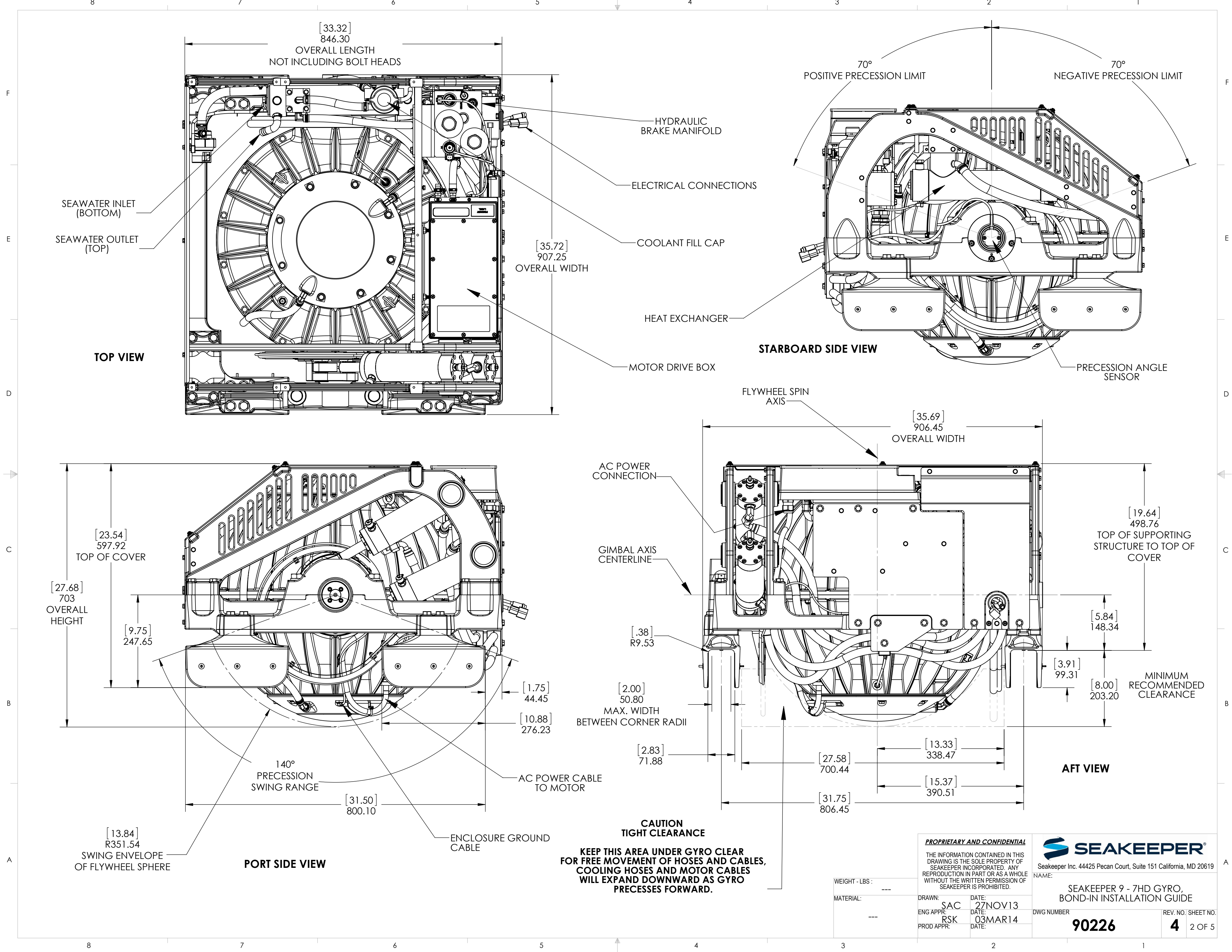
DWG NUMBER

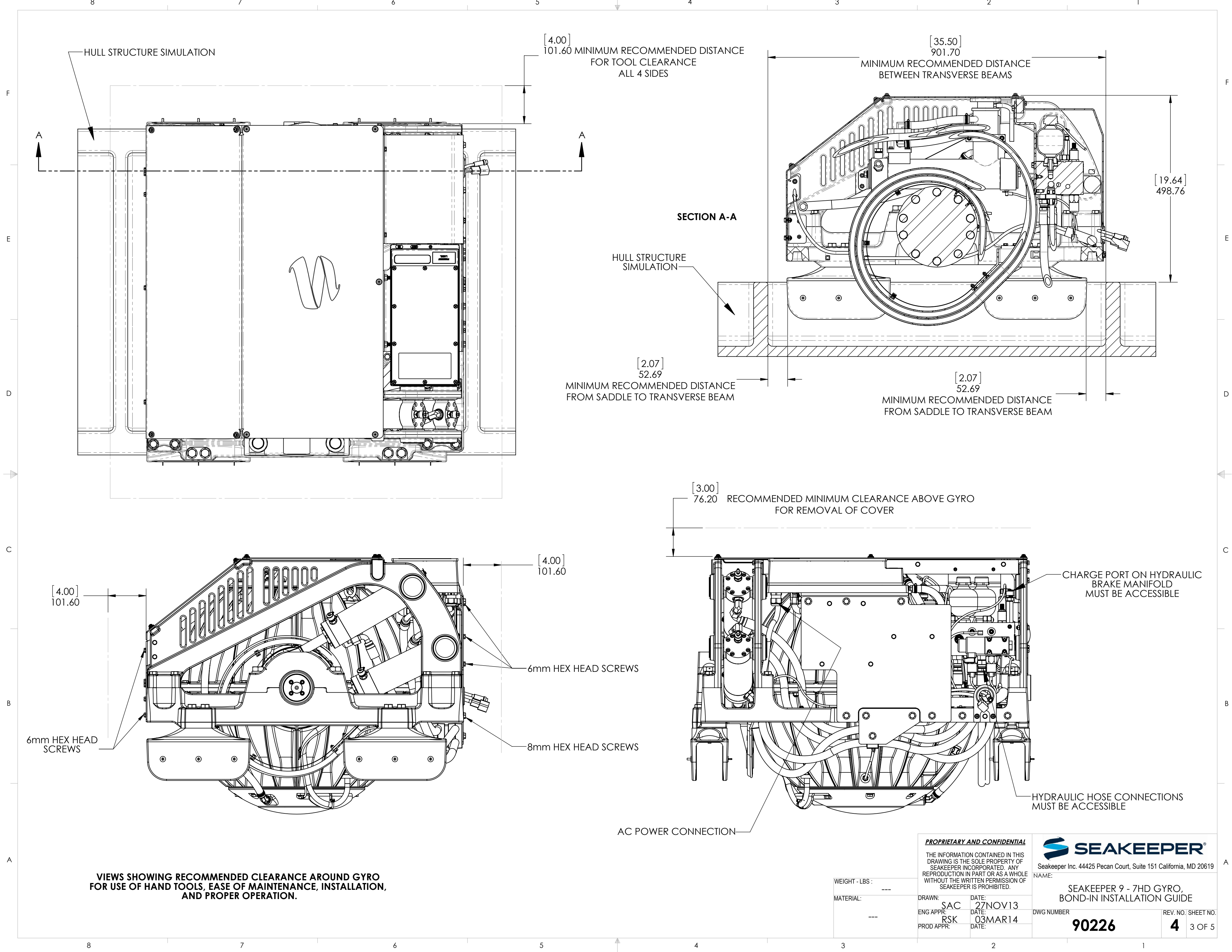
90226

REV. NO. SHEET NO.

4

1 OF 5





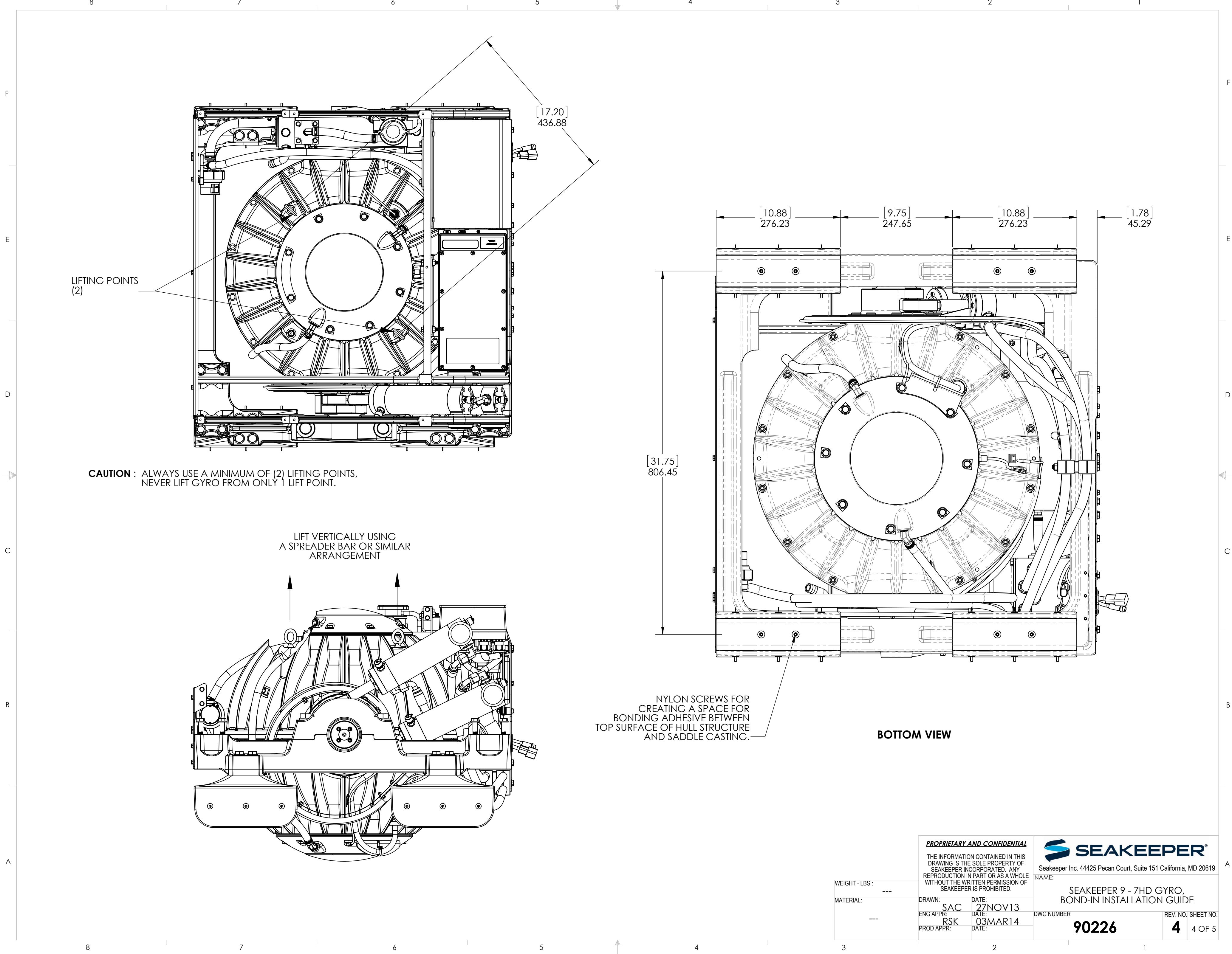
PROPRIETARY AND CONFIDENTIAL

THE INFORMATION CONTAINED IN THIS DRAWING IS THE SOLE PROPERTY OF SEAKEEPER INCORPORATED. ANY REPRODUCTION IN PART OR AS A WHOLE WITHOUT THE WRITTEN PERMISSION OF SEAKEEPER IS PROHIBITED.

SEAKEEPER®
Seakeeper Inc. 44425 Pecan Court, Suite 151 California, MD 20619

WEIGHT - LBS : ---
MATERIAL: ---
DRAWN: SAC DATE: 27NOV13
ENG APPR: RSK DATE: 03MAR14
PROD APPR: DATE:

NAME: SEAKEEPER 9 - 7HD GYRO, BOND-IN INSTALLATION GUIDE
DWG NUMBER: 90226
REV. NO. SHEET NO.: 4 3 OF 5



GYRO LOADS FOR HULL STRUCTURE DESIGN :

(1) GYRO IS MOUNTED IN A FOUNDATION FRAME WHICH IS BOLTED TO FOUR SADDLE FITTINGS MADE OF A356-T6 CAST ALUMINUM. THE GYRO FRAME INCORPORATES SEMI-ELASTIC ANTI-VIBRATION ISOLATORS ENCASING THE GIMBAL BEARINGS THAT DAMPEN VIBRATIONS THAT COULD TRANSMIT INTO THE HULL STRUCTURE. THE SADDLES ARE DESIGNED TO BE PERMANENTLY ATTACHED TO LONGITUDINAL GRP HULL BEAMS WITH A STRUCTURAL ADHESIVE. THIS MOUNTING ARRANGEMENT DISTRIBUTES THE CYCLIC, FULLY REVERSING FORCES AND MOMENTS GENERATED BY THE GYRO OVER A LARGE SURFACE AREA. THE BONDED IN SADDLES ARE **NOT** DESIGNED TO BE BOLTED TO THE HULL STRUCTURE AND THIS METHOD OF ATTACHMENT SHOULD NEVER BE ATTEMPTED WITHOUT CONSULTATION WITH SEAKEEPER INC.

(2) THE GYRO GENERATES PITCH MOMENTS, ROLL MOMENTS, YAW MOMENTS, AND VERTICAL AND HORIZONTAL FORCES - THE MAGNITUDE OF WHICH IS CONTROLLED BY THE GYRO'S ACTIVE BRAKE SYSTEM. THESE GYRO GENERATED FORCES AND MOMENTS RESULT IN LOADS BEING APPLIED AT THE FOUR POINTS WHERE THE GYRO FRAME BOLTS TO THE TOP FACE OF THE SADDLE FITTINGS. THE RESULTANT FORCES AT THESE POINTS ARE ILLUSTRATED ON THE ADJACENT FIGURE AND THE VALUES TO BE USED FOR HULL STRUCTURE DESIGN ARE SUMMARIZED BELOW:

VERTICAL FORCE (Fz) = 3,842 lbs. (17.09 kN) - (**APPLIED AT EACH OF THE 4 MOUNTING POINTS.**)
LONGITUDINAL FORCE (Fx) = 2,280 lbs. (10.14 kN) - (**APPLIED AT EACH OF THE 4 MOUNTING POINTS.**)
LATERAL FORCE (Fy) = 303 lbs. (1.348 kN) - (**APPLIED AT EACH OF THE 4 MOUNTING POINTS.**)

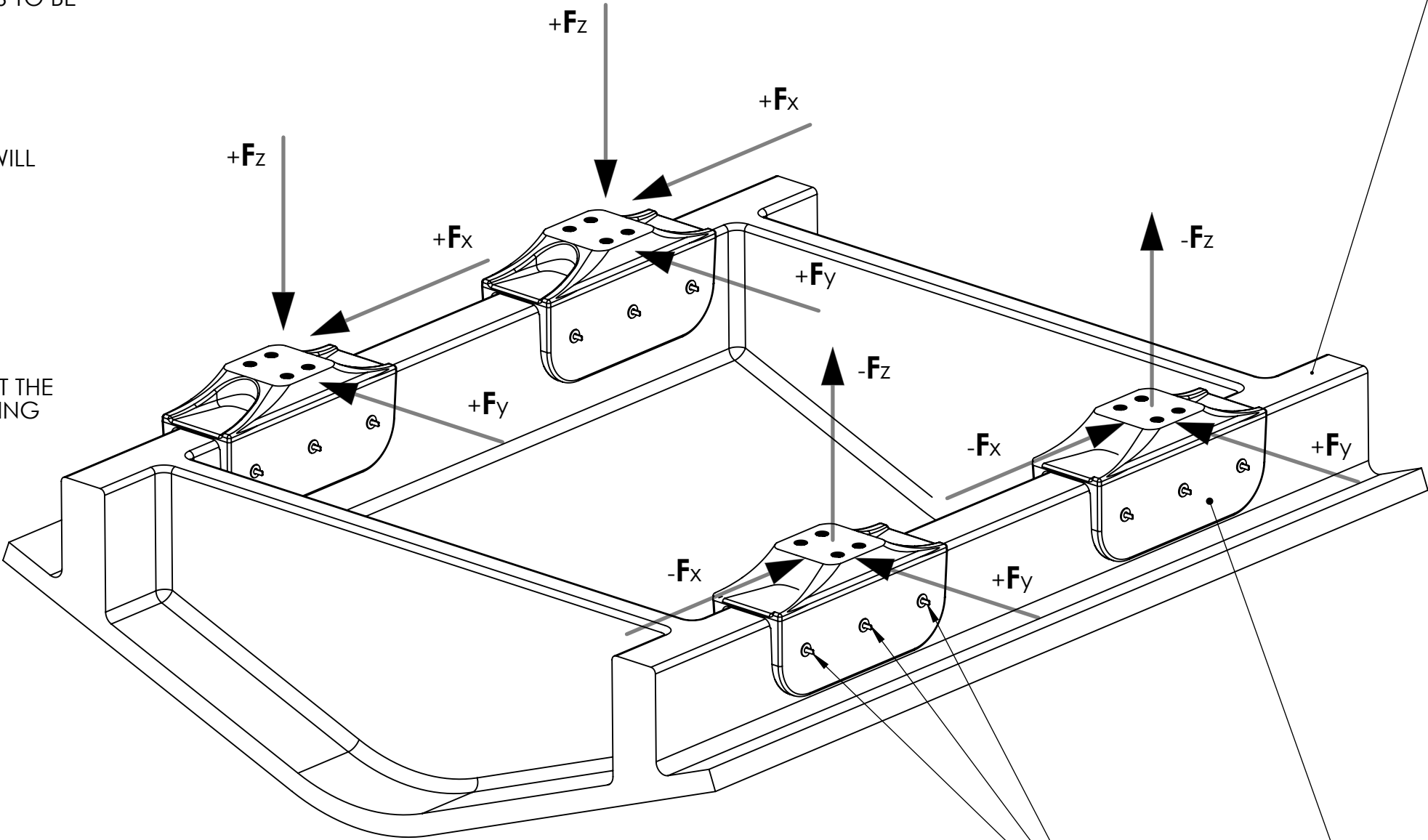
THESE FORCES SHOULD BE CONSIDERED TO BE ACTING SIMULTANEOUSLY, FULLY REVERSING IN BOTH DIRECTIONS, AND WILL REPEAT AN INFINITE NUMBER OF TIMES.

(3) THE BOAT BUILDER OR THE GYRO INSTALLER IS RESPONSIBLE FOR DESIGNING THE HULL STRUCTURE TO WHICH THE GYRO IS ATTACHED TO ACCOMMODATE THE ABOVE FORCES AND MOMENTS PLUS A REASONABLE FACTOR OF SAFETY. SEAKEEPER SUGGESTS A SAFETY FACTOR OF 3.0 (YIELDING A SAFETY MARGIN OF 2.0)

(4) THE BOAT BUILDER OR GYRO INSTALLER IS ALSO FULLY RESPONSIBLE FOR SELECTING THE STRUCTURAL ADHESIVE TO SECURE THE ALUMINUM SADDLE FITTINGS TO THE GRP HULL BEAMS. SEAKEEPER RECOMMENDS THAT THE BUILDER OR INSTALLER USE A STRUCTURAL ADHESIVE WITH A MINIMUM SHEAR STRENGTH OF 13.8 MPa (2000 psi). ADDITIONALLY IT IS STRONGLY SUGGESTED THAT THE BUILDER OR INSTALLER TEST THE COMPATIBILITY OF THE SELECTED ADHESIVE WITH CAST A356 T6 ALUMINUM AND PLANNED HULL MATERIALS BY PERFORMING MECHANICAL PROPERTY TESTS. TO AID IN DETERMINING THE QUANTITY OF ADHESIVE REQUIRED, THE INTERIOR SURFACE AREA (BONDING SURFACES) OF EACH SADDLE FITTING IS 684 SQ. CM. (106 SQ. IN.)
TOTAL BONDED SURFACE AREA FOR ALL 4 SADDLES = 2,736 SQ. CM. (424 SQ.IN.)

SHOWN FOR REFERENCE ONLY, ACTUAL STRUCTURE DESIGN TO BE DETERMINED BY BOAT MANUFACTURER OR GYRO INSTALLER.
SUPPORT STRUCTURE MUST BE PARALLEL TO VESSEL WATERLINE.
SEE NOTE 6, SHEET 1

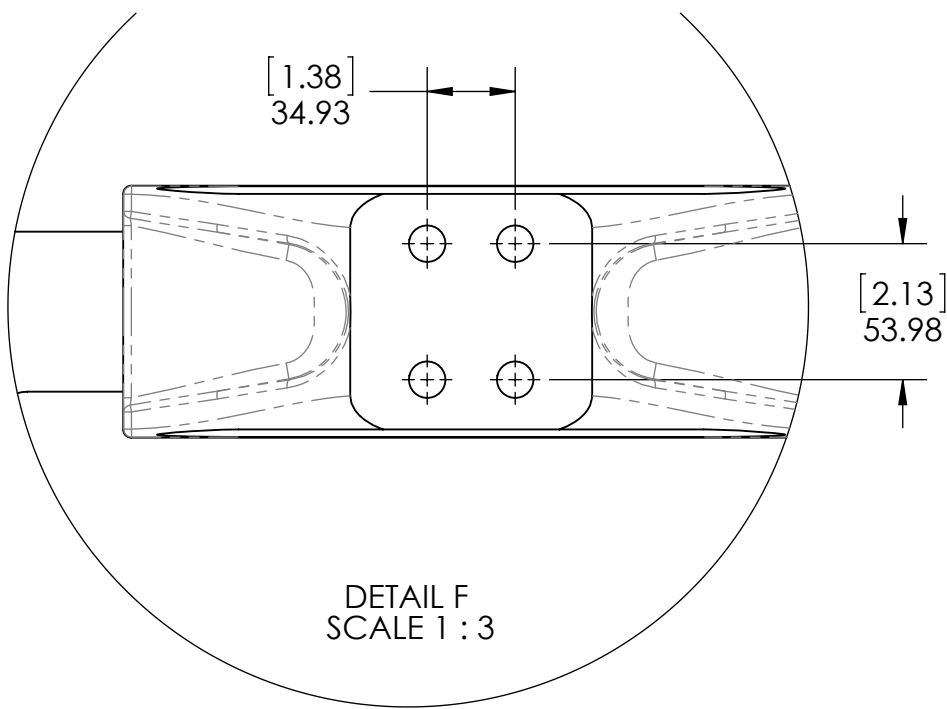
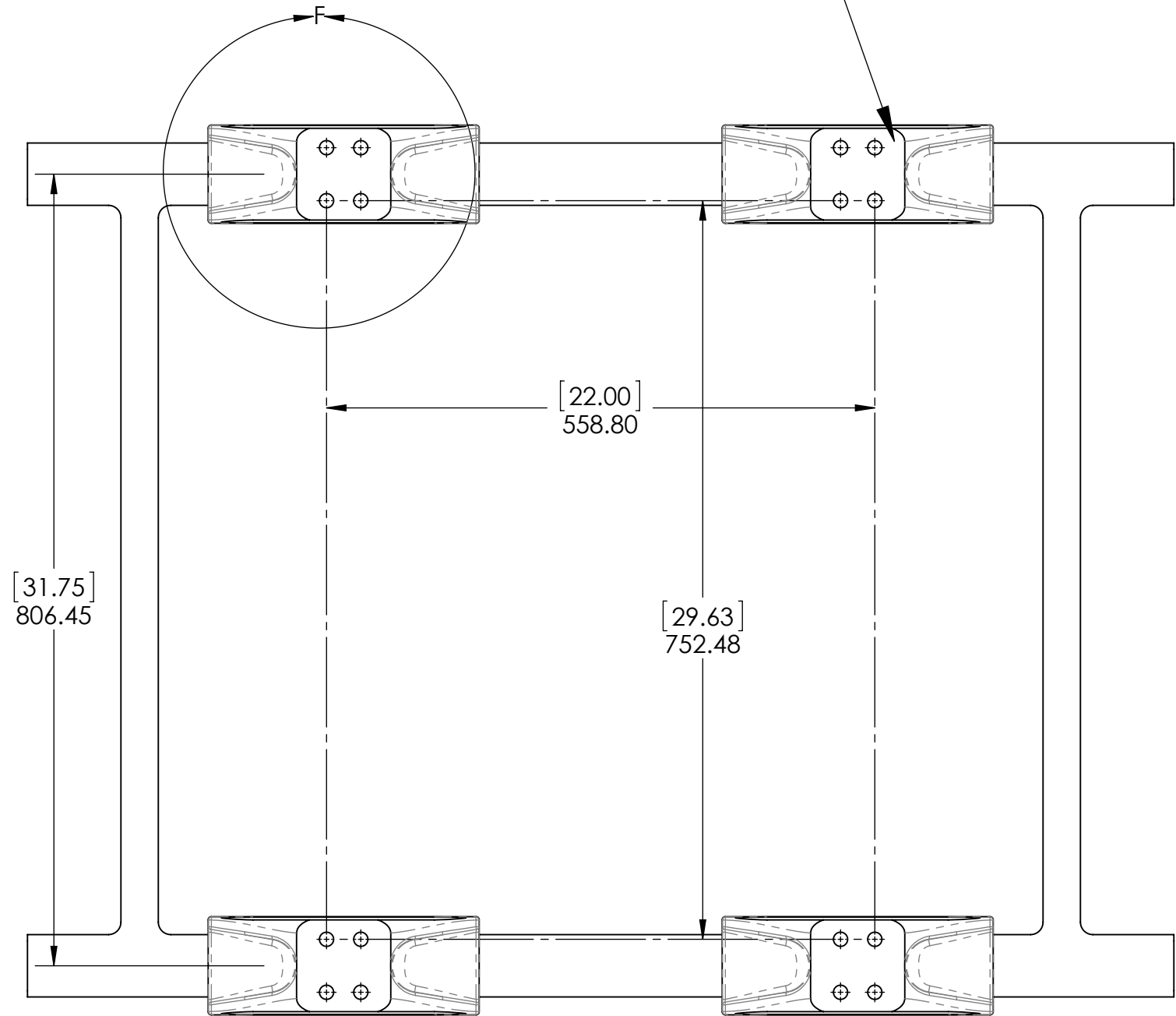
FORCES ARE APPLIED AT EACH OF THE 4 MOUNTING POINTS, SEE NOTE 2.



AUXILLARY INJECTION HOLES FOR BONDING ADHESIVE
SEE NOTE 7, SHEET 1

BUILDER/INSTALLER IS TO INSTALL 4 SADDLE FITTINGS USING STRUCTURAL ADHESIVE. SEAKEEPER RECOMMENDS USING AN INSTALLATION FIXTURE #90237 AVAILABLE FROM SEAKEEPER, TO MAINTAIN ALIGNMENT AND LOCATION OF SADDLES DURING BONDING PROCESS. AFTER ADHESIVE IS FULLY CURED, THE GYRO FRAME IS THEN FASTENED TO THE SADDLES USING THE HARDWARE INCLUDED WITH GYRO- M14-2.0 X 80mm LONG, ALLOY STEEL HEX HEAD CAP SCREWS. **TORQUE VALUE FOR BOLTS = 100 FT/LBS (135.6 Nm)** USING REMOVEABLE THREADLOCKER COMPOUND ON BOLT THREADS AND MARINE SEALANT UNDER FLAT WASHERS. SEE INSTALLATION MANUAL #90222 FOR DETAILS OF INSTALLATION PROCEDURE.

ALL 4 BOLT SURFACES MUST BE FLAT AND CO-PLANER WITHIN 1.5 mm



PROPRIETARY AND CONFIDENTIAL
THE INFORMATION CONTAINED IN THIS DRAWING IS THE SOLE PROPERTY OF SEAKEEPER INCORPORATED. ANY REPRODUCTION IN PART OR AS A WHOLE WITHOUT THE WRITTEN PERMISSION OF SEAKEEPER IS PROHIBITED.

SEAKEEPER
Seakeeper Inc. 44425 Pecan Court, Suite 151 California, MD 20619

NAME: SEAKEEPER 9 - 7HD GYRO, BOND-IN INSTALLATION GUIDE

DWG NUMBER

90226

REV. NO. SHEET NO.

4 5 OF 5

WEIGHT - LBS :

MATERIAL:

DRAWN:

DATE:

ENG APPR:

DATE:

PROD APPR:

DATE: