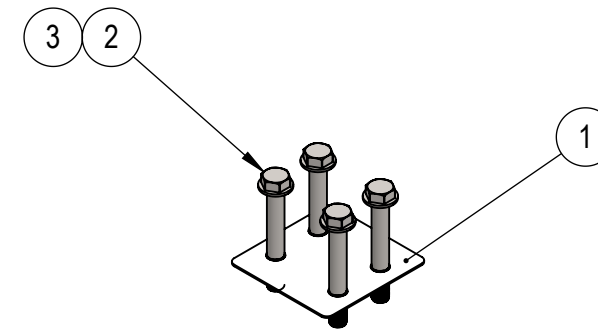
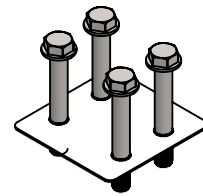
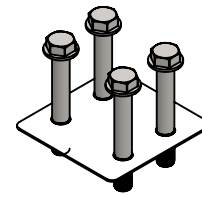
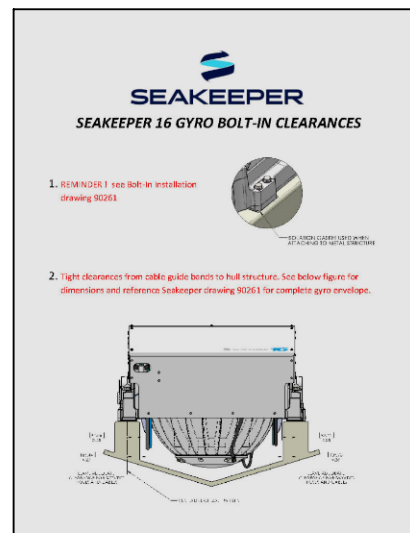


NOTE: 1) THESE COMPONENTS ARE TO BE USED DURING A DIRECT BOLT-IN INSTALLATION OF SEAKEEPER MODEL 16 GYRO. THE 4 GASKET PADS MUST BE USED BETWEEN THE ALUMINUM GYRO FRAME AND ANY DISSIMILAR METAL STRUCTURE THAT THE GYRO WILL BOLT AGAINST. THE BOLTS SUPPLIED ARE GRADE 5 ZINC PLATED ALLOY STEEL, M14-2.0 X 100mm LG. ANY OTHER LENGTH NEEDED MUST BE SUPPLIED BY INSTALLER. SEAKEEPER RECOMMENDS THE USE OF LOC-TITE 243 BLUE THREAD SEALANT ON ALL BOLTS. SEAKEEPER ALSO RECOMMENDS USING A MARINE GRADE SILICONE SEALANT UNDER EACH FLAT WASHER TO HELP PREVENT CORROSION OF BOLTS.

REV NO.	ECN NO.	ZONE	DESCRIPTION	DATE	APPRVD.
1	0178		RELEASED FOR PRODUCTION	9/9/2014	RSK
2	0324		LOGO CHANGE ON DOCUMENTS	6/8/2015	SAC

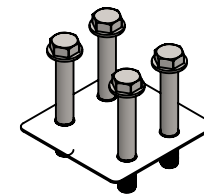


ATTACH TO GYRO,
WIRE TIE TO EYEBOLT



4

2



4	90332	OPERATION CLEARANCE DOCUMENT		1	
3	60253	FLAT WASHER M14	ZINC PLTD STL.	16	
2	60296	HHCS M14-2.0 X 100mm LG. GRD 8.8	ZINC PLTD STL	16	
1	11182	SEAKEEPER 16 FRAME ISOLATION GASKET	.063 THK GAROLITE G10	4	
ITEM NO.	PART NO.	DESCRIPTION	MATERIAL	QTY.	NOTE

WEIGHT - LBS : ---

MATERIAL: ---

PROPRIETARY AND CONFIDENTIAL

THE INFORMATION CONTAINED IN THIS DRAWING IS THE SOLE PROPERTY OF SEAKEEPER INCORPORATED. ANY REPRODUCTION IN PART OR AS A WHOLE WITHOUT THE WRITTEN PERMISSION OF SEAKEEPER IS PROHIBITED.

DRAWN: SAC

DATE: 08SEP14

ENG APPR: RSK

DATE: 09SEP14

PROD APPR: ---

DATE: ---



Seakeeper Inc.
44425 Pecan Court
Suite 151
California, MD 20619

NAME:

SEAKEEPER 16 BOLT-IN KIT

DWG NUMBER

90309

REV. NO. SHEET NO.

2 1 OF 1