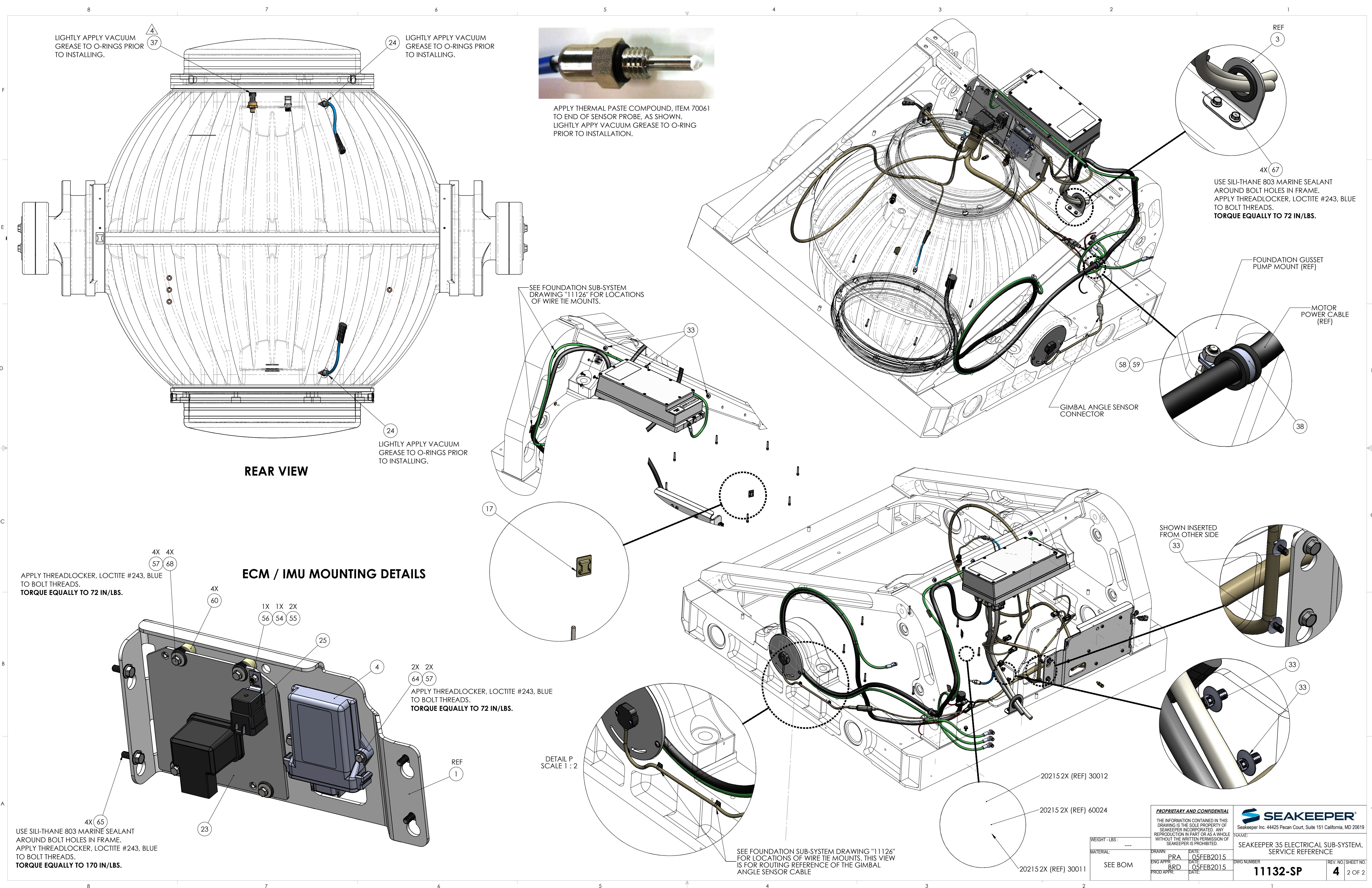


REV NO.	ECN NO.	ZONE	DESCRIPTION	DATE	APPRVD.
1	177		INITIAL RELEASE	2/20/2015	BRD
2	287, 332 339, 341		REMOVE 20209, 20210, 30015, 30232, & 30233. REPLACE 30179 (12.5 FT) WITH 30180 (12.5 FT). REPLACE 30197 (2) WITH 30280 (2). REPLACE 30229 WITH 30268. REPLACE 30230 WITH 30269. REPLACE 30254 (1) WITH 30255 (1). REPLACE 60090 (3) WITH 60406 (3). CHANGE 30016 QTY FROM 3 TO 1. ADDED 30246. CORRECTED AC POWER AND SEAWATER PUMP CABLE CALLOUTS.	28AUG2015	BRD
3	452, 504		GROUND CABLES CHANGED FROM 4AWG TO 10AWG. REPLACED ALL SERRATED TOOTH LOCK WASHERS WITH SPLIT LOCK WASHERS UNDER GROUND SCREWS. ADDED 40107 (1) AND 40142 (2).	24FEB2017	BRD
4	484 504		REPLACED SENSATA VAC SENSOR 30236 WITH WASCO SENSOR 30288. ADDED 40107 AND 40142.	14APR2017	BRD

73	70061	THERMAL JOINT COMPOUND, WAKEFIELD TYPE 120	---	AR	
72	70054	THREADLOCKER, LOCTITE #243, BLUE	---	AR	
71	70029	CORROSION RESISTANT CONDUCTIVE PASTE	---	AR	
70	70001	VACUUM GREASE	---	AR	
69	60406	SCREW, HEX HD CAP, M6-1.0 X 20MM, FULL TD	BRASS	3	
68	60379	SCREW, HEX HD CAP,M6-1.0 X 35MM, FULL TD	316 STAINLESS STEEL	4	
67	60370	SCREW, HEX HD FLANGED M6-1 X 12MM FULL TD	18-8 SS	4	
66	60365	SCREW, HEX HD FLANGED M6-1.0 X 16MM FULL TD	18-8 SS	4	
65	60363	SCREW, HEX HD FLANGED M8-1.25 X 20MM FULL TD	18-8 STAINLESS	4	
64	60321	SCREW, HEX HD CAP M6-1.0 X 25MM FULL TD	316 SS	2	
63	60309	SCREW, SOCKET HD BUTTON, M5-.8 X 16MM, FULL TD	316 SS	3	
62	60278	HEX HD CAP SCREW,M6-1.0 X 16mm LG, FULL THREAD	BRASS	1	
61	60271	SCREW, SOCKET HD CAP 10-24 x 1.25 FULL TD	ALLOY STEEL	8	
60	60260	STAND OFF, NYLON, .31X.75X.5	NYLON	4	
59	60257	SCREW, HEX HD CAP M6-1.0 X 20MM FULL TD	316 SS	1	
58	60255	HEX NUT, NYLOCK M6-1.0	316 SS	1	
57	60223	WASHER, FLAT, M6 12MM OD	316SS	6	
56	60177	SCREW, PHILLIPS HD PAN 8-32 X 0.63	18-8 SS	1	
55	60162	FLAT WASHER, #8	316 SS	2	
54	60161	HEX NUT NYLOCK 8-32	18-8 SS	1	
53	60098	NUT, FULL HEX, DIN 934, M6-1.0	BRASS	5	
52	60096	WASHER, SPLIT LOC .25 ID	SILICON BRONZE	9	
51	60090	SCREW, HEX HD CAP, M6-1.0 X 30MM, FULL TD	BRASS	1	
50	60038	FLAT WASHER, M4	18-8 SS	2	
49	60037	SPRING LOCK WASHER, M4	18-8 SS	2	
48	60036	BUTTON SKT HD CAP SCREW, M4-.7 X 20MM LG	18-8 SS	2	
47	60035	WASHER, SPLIT LOC DIN7980, M4	18-8 SS	2	
46	60034	SCREW, SOCKET HD CAP M4-.7 X 16MM FULL TD	18-8SS	2	
45	60033	FLAT WASHER #10	316SS	3	
44	60015	WASHER, HI COLLAR LOC #10	ALLOY STEEL	8	
43	40367	GROMMET, PUSH IN 1-1/4 ID X 3/32 PANEL THKNSS.	SBR RUBBER	2	
42	40250	SILI-THANE 803 MARINE SEALANT	POLYURETHANE	AR	
41	40246	3/4" SHRINK TUBING, 1" LONG, (USED ON MOTOR POWER CABLE)	---	8	
40	40142	O-RING, SIZE 024 A75 DUROMETER	VITON	2	
39	40107	RETAINING RING, EXTERNAL, 1.25 DIA	SS	1	
38	40093	RUBBER CUSHION LOOP CLAMP, .5 DIA	300 SER SS	1	
37	30288	VACUUM SENSOR, WASCO	BRASS	1	
36	30280	FERRULE 16 AWG, .47 PIN LENGTH	---	2	
35	30269	SEAKEEPER DISPLAY SUNCOVER	---	1	
34	30268	SEAKEEPER CONTROLLER DISPLAY	---	1	
33	30261	CABLE TIE MOUNT, PUSH IN TYPE	---	7	
32	30255	RING TERMINAL, 16-14 GA, #8 STUD, NYLON INSULATED, BLUE	---	1	
31	30254	RING TERMINAL, 12-10 GA, #8 STUD, NYLON INSULATED, YELLOW	---	1	
30	30249	TERMINATOR, NMEA 2000 MICRO, 120OHM FEMALE	PLASTIC	1	
29	30247	AMPHENOL LTW PLASTIC CAP, FEMALE	---	1	
28	30246	AMPHENOL LTW PLASTIC CAP, MALE	---	1	
27	30244	DISPLAY CABLE T- ADAPTOR	---	1	
26	30243	CABLE, MALE/FEMALE, NMEA 2000 PLASTIC MICRO, 25M LG.	---	1	
25	30241	POWER RELAY	---	1	
24	30235	THERMISTOR, GE WTS 1797	316 SS	2	
23	30234	ECU ASSEMBLY INCLUDING ISOLATION BUSHINGS	---	1	
22	30197	FERRULE 10 AWG, .47 PIN LENGTH	---	5	
21	30190	MOISTURE SEAL, HEAT SHRINK END CAP, .125 ID BEFORE, .02 ID AFTER, BLK	---	3	
20	30179	MARINE GRADE ELECTRICAL CABLE, 10-3, AC POWER, 12.5 FT LONG	---	1	
19	30179	MARINE GRADE ELECTRICAL CABLE, 10-3, SEAWATER PUMP, 12.5 FT LONG	---	1	
18	30112	TUBING, HEAT SHRINKABLE, WITH ADHESIVE, BLK, .5" DIA X 3" L	---	1	
17	30016	LARGE CLICK BOND WIRE TIE ANCHOR	COMPOSITE	1	
16	30003	POSITION MARKER	---	1	
15	20248	GYRO DC INPUT POWER CABLE ASSEMBLY, 5M LG.	---	1	
14	20239	SEAKEEPER 35, MOTOR ROTOR ASSEMBLY	---	1	
13	20236	SEAKEEPER 35, GROUND CABLE ASSEMBLY, HEAT EXCHANGER TO FRAME	---	1	
12	20235	SEAKEEPER 35, GROUND CABLE ASSEMBLY, ENCLOSURE TO FRAME	---	1	
11	20234	SEAKEEPER 35, GROUND CABLE ASSEMBLY, DRIVE BOX TO FRAME	---	1	
10	20230	SEAKEEPER 35, GYRO WIRING HARNESS	---	1	
9	20223	CANvv 355 DISPLAY INTERFACE CABLE	---	1	
8	20222	GIMBAL ANGLE SENSOR & CONNECTOR ASSEMBLY	---	1	
7	20216	SEAKEEPER MOTOR DRIVE BOX	ALUMINUM	1	
6	20215	SEAKEEPER 35, MOTOR STATOR ASSEMBLY	---	1	
5	20208	DISPLAY LABEL	---	1	
4	20206	CAN IMU ASSEMBLY	---	1	
3	11141	SEAKEEPER 35, CABLE EXITING GUIDE	5052 ALUMINUM	2	
2	11081	GIMBAL ANGLE SENSOR MOUNT	6061-T6	1	
1	11056	SEAKEEPER 35, ECM / IMU MOUNTING BRACKET	5052 ALUMINUM	1	
ITEM NO.	PART NO.	DESCRIPTION	MATERIAL	QTY	NOTE

WEIGHT - LBS: ---		MATERIAL: SEE BOM		DATE: 05FEB2015		DATE: 05FEB2015	
DRAWN: PRA		ENG APPR: BRD		DATE: 05FEB2015		DATE: 05FEB2015	
PROD APPR: ---		DATE: ---		DATE: ---		DATE: ---	
PROPRIETARY AND CONFIDENTIAL THE INFORMATION CONTAINED IN THIS DRAWING IS THE SOLE PROPERTY OF SEAKEEPER INCORPORATED. ANY REPRODUCTION IN PART OR AS A WHOLE WITHOUT THE WRITTEN PERMISSION OF SEAKEEPER IS PROHIBITED.				SEAKEEPER Seakeeper Inc. 44425 Pecan Court, Suite 151 California, MD 20619 NAME: SEAKEEPER 35, ELECTRICAL SUB-SYSTEM, SERVICE REFERENCE DWG NUMBER: 11132-SP REV. NO. SHEET NO: 4 1 OF 2			





LIGHTLY APPLY VACUUM GREASE TO O-RINGS PRIOR TO INSTALLING.

LIGHTLY APPLY VACUUM GREASE TO O-RINGS PRIOR TO INSTALLING.

APPLY THERMAL PASTE COMPOUND, ITEM 70061 TO END OF SENSOR PROBE, AS SHOWN. LIGHTLY APPLY VACUUM GREASE TO O-RING PRIOR TO INSTALLATION.

SEE FOUNDATION SUB-SYSTEM DRAWING "11126" FOR LOCATIONS OF WIRE TIE MOUNTS.

USE SILI-THANE 803 MARINE SEALANT AROUND BOLT HOLES IN FRAME. APPLY THREADLOCKER, LOCTITE #243, BLUE TO BOLT THREADS. TORQUE EQUALLY TO 72 IN/LBS.

FOUNDATION GUSSET PUMP MOUNT (REF)

MOTOR POWER CABLE (REF)

GIMBAL ANGLE SENSOR CONNECTOR

REAR VIEW

ECM / IMU MOUNTING DETAILS

APPLY THREADLOCKER, LOCTITE #243, BLUE TO BOLT THREADS. TORQUE EQUALLY TO 72 IN/LBS.

APPLY THREADLOCKER, LOCTITE #243, BLUE TO BOLT THREADS. TORQUE EQUALLY TO 72 IN/LBS.

USE SILI-THANE 803 MARINE SEALANT AROUND BOLT HOLES IN FRAME. APPLY THREADLOCKER, LOCTITE #243, BLUE TO BOLT THREADS. TORQUE EQUALLY TO 170 IN/LBS.

SHOWN INSERTED FROM OTHER SIDE

DETAIL P SCALE 1 : 2

SEE FOUNDATION SUB-SYSTEM DRAWING "11126" FOR LOCATIONS OF WIRE TIE MOUNTS. THIS VIEW IS FOR ROUTING REFERENCE OF THE GIMBAL ANGLE SENSOR CABLE

**SEAKEEPER**  
Seakeeper Inc. 44425 Pecan Court, Suite 151 California, MD 20619

NAME: SEAKEEPER 35 ELECTRICAL SUB-SYSTEM, SERVICE REFERENCE

DWG NUMBER: 11132-SP

REV. NO. SHEET NO. 4 2 OF 2

WEIGHT - LBS. ---		DATE: 05FEB2015	
MATERIAL: SEE BOM		DATE: 05FEB2015	
DRAWN: PRA		DATE: 05FEB2015	
ENG APPR: BRD		DATE: 05FEB2015	
PROD APPR:		DATE:	

20215 2X (REF) 30012

20215 2X (REF) 60024

20215 2X (REF) 30011