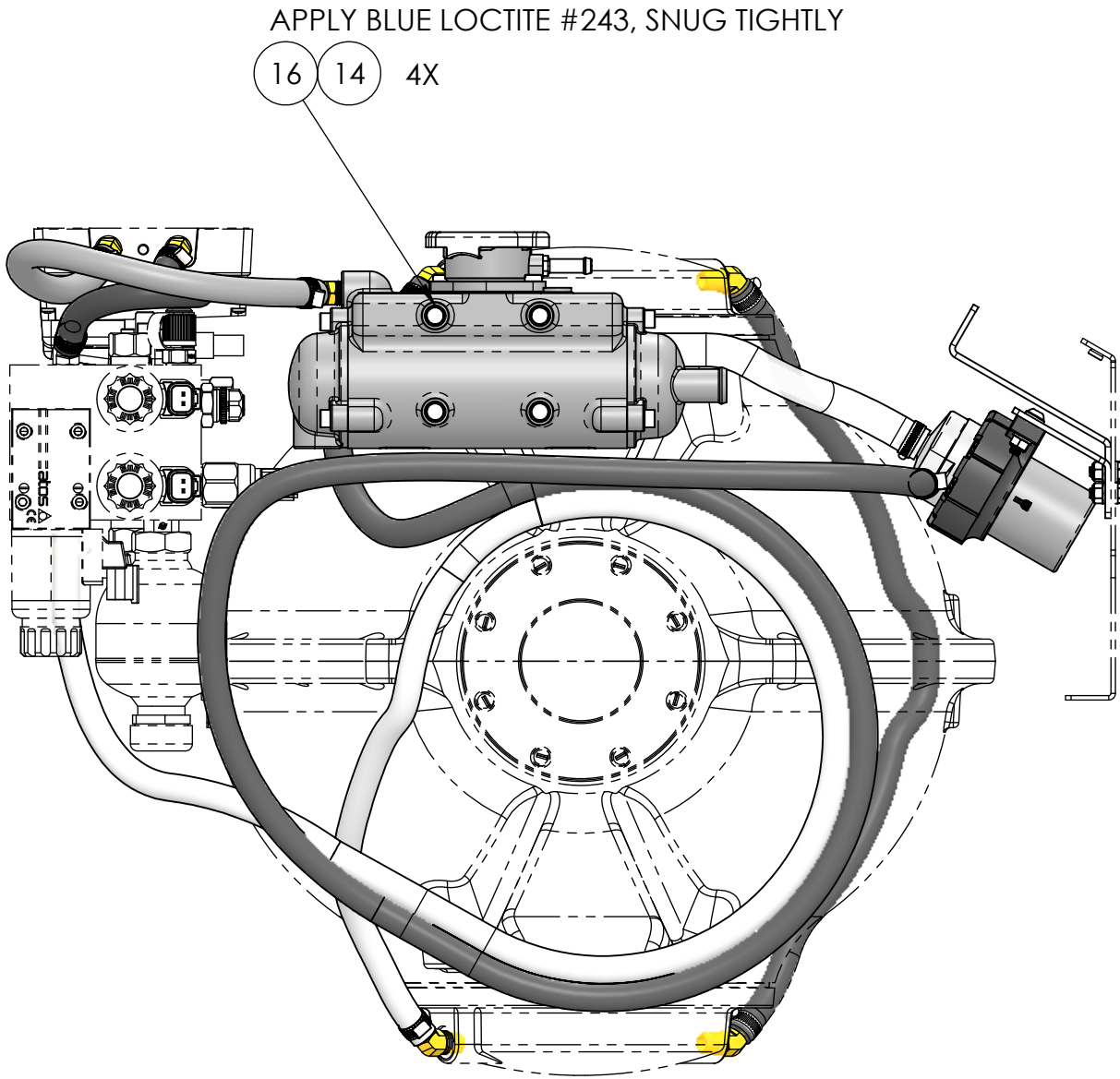
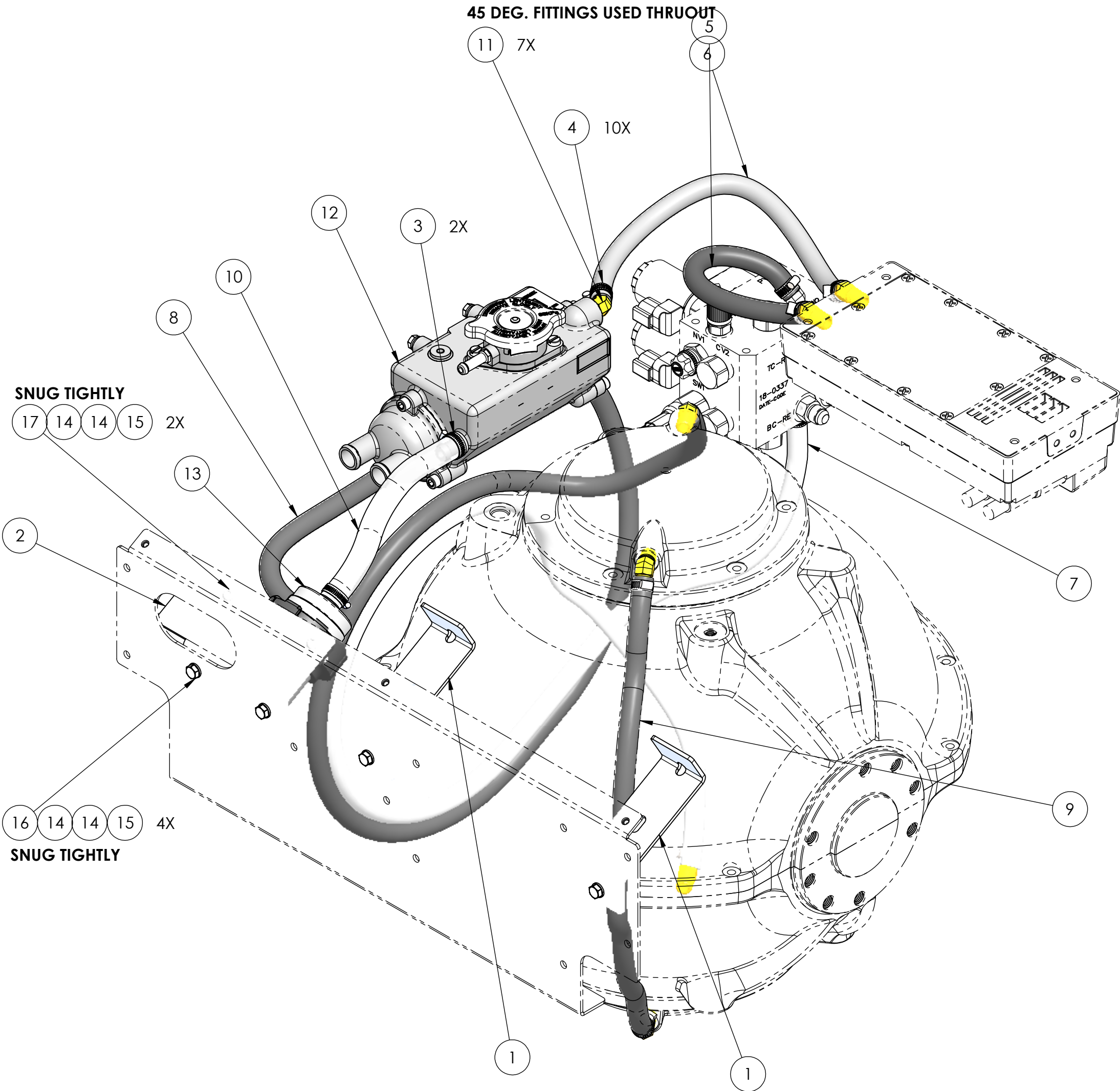



NOTES:
1) THIS DWG. REPRESENTS A SUB-GROUP OF COMPONENTS WITHIN THE SK2 COOLING SYSTEM BILL OF MATERIAL AND DOES NOT NECESSARILY REPRESENT THE ACTUAL ASSEMBLY PROCEDURE. THIS DWG DOES PROVIDE TECHNICAL INFORMATION REGARDING COMPONENT LOCATION, SUGGESTED HOSE ROUTING, AND FASTNER APPLICATION.
2) USE TEFLON PIPE THREAD SEALANT ON ALL TAPERED PIPE THREAD FITTINGS, DO **NOT** USE TEFLON TAPE.

REV NO.	ECN NO.	ZONE	DESCRIPTION	DATE	APPRVD.
1			RELEASED FOR PRODUCTION	29MAR2018	BEN
2			CHANGED 10X HOSE CLAMPS TO SMALLER HOSE CLAMPS, ADDED SERVICE LOOP IN DRIVE HOSE	25MAY2018	BEN



18	70054	THREADLOCKER, LOCTITE #243, BLUE	AR
17	60543	SCREW, SKT HD BTN, M6-1X X25MM LG, 316 SS	2
16	60256	SCREW, HEX HEAD CAP, M6-1.0 X 16mm LG, 316SS	8
15	60255	HEX NUT, NYLOK M6-1.0	6
14	60223	WASHER, FLAT, M6 12MM OD	16
13	40501	COOLING PUMP, 12VDC, .50 INLET X .38 OUTLET, WATERPROOF	1
12	40500	ALUM. BODY HEAT EXCHANGER, SMALL MODEL GYRO	1
11	40482	HOSE BARB FITTING, 3/8 X 1/4 NPT MALE, 45 DEGREE ELBOW	7
10	40227	CLEAR, REINFORCED PVC HOSE, .50" ID X 8" LONG	8"
9	40109	COOLANT HOSE, 3/8" ID X 20 1/4"	20 1/4"
8	40109	COOLANT HOSE, 3/8" ID X 70"	70"
7	40109	COOLANT HOSE, 3/8" ID X 51.5"	51 1/2"
6	40109	COOLANT HOSE, 3/8" ID X 14"	14"
5	40109	COOLANT HOSE, 3/8" ID X 12" LONG	12"
4	40047	HOSE CLAMP SIZE -04, .31 BAND WIDTH, 301SS	10
3	40026	HOSE CLAMP, SIZE 06	2
2	11562	SEAKEEPER 2 COOLANT PUMP BRACKET	1
1	11561	SEAKEEPER 2 SEAWATER HOSE SUPPORT BRACKET	2
ITEM NO.	PART NUMBER	DESCRIPTION	QTY.

		<u>PROPRIETARY AND CONFIDENTIAL</u>		 SEAKEEPER®	
		THE INFORMATION CONTAINED IN THIS DRAWING IS THE SOLE PROPERTY OF SEAKEEPER INCORPORATED. ANY REPRODUCTION IN PART OR AS A WHOLE WITHOUT THE WRITTEN PERMISSION OF SEAKEEPER IS PROHIBITED.		Seakeeper Inc. 44425 Pecan Court, Suite 151 California, MD 20619	
WEIGHT - LBS : ---				NAME: SEAKEEPER 2 COOLING SUB-SYSTEM SERVICE REFERENCE	
MATERIAL: ---		DRAWN: WHK	DATE: 09JAN2018	DWG NUMBER	
		ENG APPR:	DATE:	REV. NO. SHEET NO.	
		PROD APPR:	DATE:	11864-SP	
				2 1 OF 1	