

# SEAKEEPER PRE-INSTALLATION CHECKLIST



PRODUCT      ALL SEAKEEPER SERIES MODELS

## DESCRIPTION

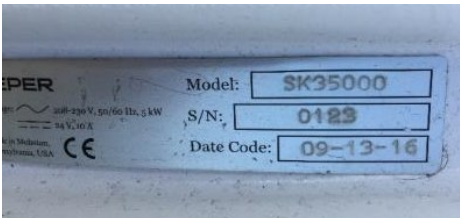
This procedure provides a checklist of items to inspect and verify BEFORE installation of Seakeeper stabilizers.

## PROCEDURE

- 1. **IDENTIFY** Seakeeper stabilizer information as follows:
  - a. **OBTAIN AND CONNECT** appropriate low current DC power supply for Seakeeper model at DC INPUT connector.

SEAKEEPER MODEL	DC POWER INPUT
Seakeeper 2, 3, 5, and 6	+12 VDC
Seakeeper 9, 18, 26, and 40	+24 VDC

- b. **ATTACH** 5" Touch Display to DISPLAY CANbus connector with a tee adapter (P/N 30244), terminal resistor (P/N 30249), and 2 ft NMEA Lite cable (P/N 30301).
  - c. When power applied, **LOCATE AND NOTE** following:
    - i. Model
    - ii. Serial Number
    - iii. GCM software version
    - iv. Display software version



Serial number may also be found on enclosure sphere

Access Information page by pressing information icon (i) on menu

**SEAKEEPER PRE-INSTALLATION CHECKLIST**

PRODUCT ALL SEAKEEPER SERIES MODELS

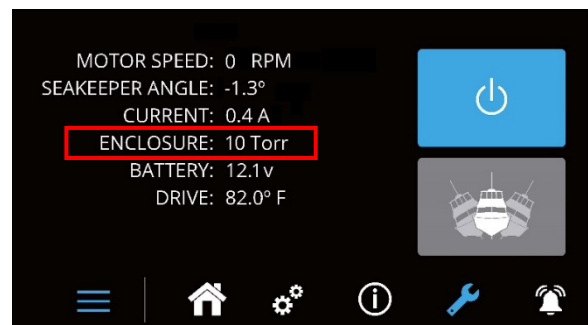
2. On Motor Drive of Seakeeper, **LOCATE AND NOTE** motor drive box (MDB) serial number.



3. **COMPLETE** SEAKEEPER INFORMATION block of Seakeeper Commissioning form, 90437.

SEAKEEPER INFORMATION	
Seakeeper Model _____	Seakeeper Serial Number _____
Display / ConnectBox Software Version _____	GCM Software Version _____
Installation Type (OEM / Refit) _____	Installation Location _____

4. **IF** model equipped with vacuum sensor, **THEN ENSURE** Torr value on display Service screen (wrench icon) less than 20 Torr.
- IF** indicating zero Torr or greater than 30 Torr, **THEN CHECK** vacuum with digital vacuum gauge per [SWI-129](#).
  - CONTACT** Seakeeper Product Support Team at [support@seakeeper.com](mailto:support@seakeeper.com) if above 30 Torr.



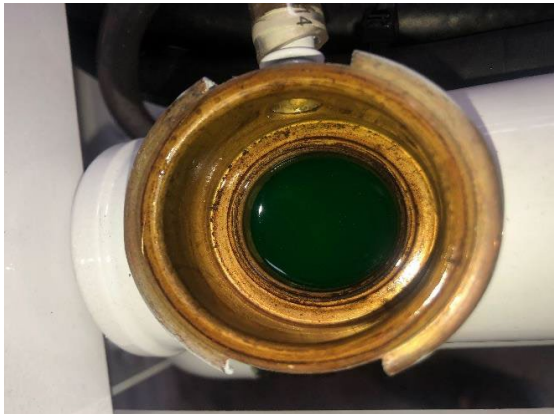
## SEAKEEPER PRE-INSTALLATION CHECKLIST



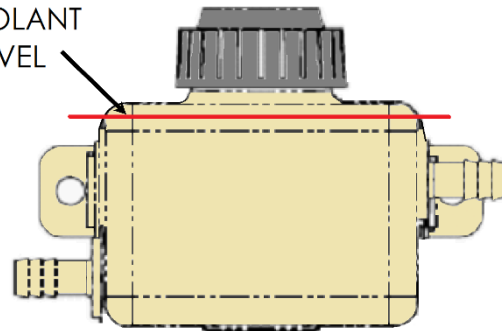
PRODUCT ALL SEAKEEPER SERIES MODELS

5. **CHECK** glycol level as follows:

- a. **IF** Seakeeper 1 through 18,  
**THEN REMOVE** top covers to access glycol reservoir.
- b. **REMOVE** reservoir fill cap.
- c. **VERIFY** glycol level just below reservoir fill neck.



CORRECT  
COOLANT  
LEVEL



- i. **IF** glycol level low AND indication of leakage in crate,  
**THEN:**
  1. **ACTIVATE** brake override.
  2. **INSPECT** for all hoses fully inserted on barbs and hose clamps tight.
  3. **INSPECT** all hoses for cuts or damage.
  4. **CORRECT** any issues found.
- d. **IF** equipped with overflow tube,  
**THEN ENSURE** tubing is attached, coiled, and secured out of way for installation.

**SEAKEEPER PRE-INSTALLATION CHECKLIST**

PRODUCT ALL SEAKEEPER SERIES MODELS

6. **IF** Seakeeper 2 through 40,  
**THEN:**
- a. **ATTACH** brake test pressure gauge (P/N 12830) to brake manifold service connection.
    - i. **IF** separate gauge unavailable,  
**THEN FOLLOW** SWI-103 to obtain brake pressure.
  - b. **ACTIVATE** brake override.
  - c. **OPEN** manifold needle valve.
  - d. **RECORD** brake pressure.

Model	Pressure (psi / BAR)
Seakeeper 2 through 18	350 / 24.1
Seakeeper 26 & 40	240 / 16.5

- e. **IF** brake pressure satisfactory,  
**THEN:**
  - i. **CLOSE** manifold needle valve.
  - ii. **REMOVE** test pressure gauge.
  - iii. **DEACTIVATE** brake override.
- f. **IF** brake pressure unsatisfactory,  
**THEN RAISE** pressure per SWI-103, Seakeeper Brake Service.

**\*\*\*\*\* END \*\*\*\*\***

Revision	Description	Approval	Date
1	Initial release	K Zervas	13SEP2019
2	Seakeeper 40 introduction. Minor edit changes.	A Patricio	21JUN2023