

## DESCRIPTION

SEAKEEPER has designed a new touchscreen display that takes all of the features of the 3.5" display and incorporates them into a sleek new 5" display that also boasts Multi-Function Display (MFD) connectivity and a user-friendly, touchscreen interface.

## 5" DISPLAY FEATURES

The 5" display features touchscreen operation, updated graphics and an improved user-interface. The display has the capability of being connected to modern MFDs via a NMEA 2000 or Ethernet network. Adding a SEAKEEPER interface to a vessel's electronics means that the 5" display may be mounted in a remote location, freeing up space on the vessel's dashboard.



Each display ships with a 10-meter communication cable to connect the stabilizer to the SEAKEEPER display. Additional lengths are available.

For detailed dimensions, refer to the included drawing 90438 (Envelope and Mounting details, 5 inch operator display).

Contact SEAKEEPER for information and details regarding NMEA 2000 connectivity and interface to supported Multi-Function Displays (MFDs). Existing MFDs may require manufacturer updates to accept SEAKEEPER integration.

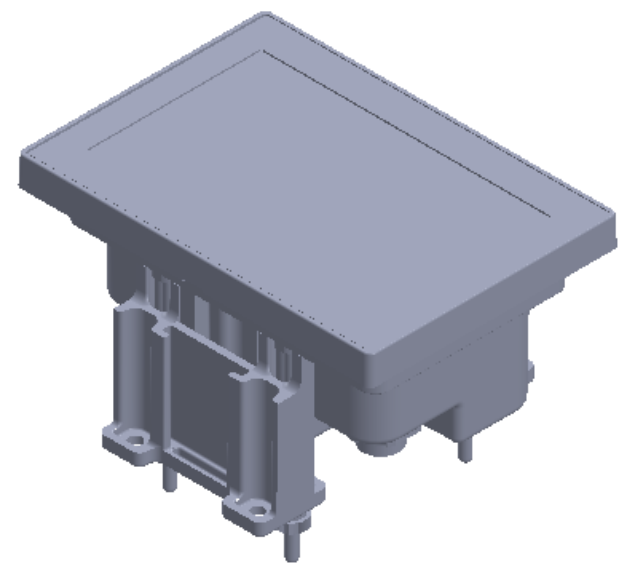
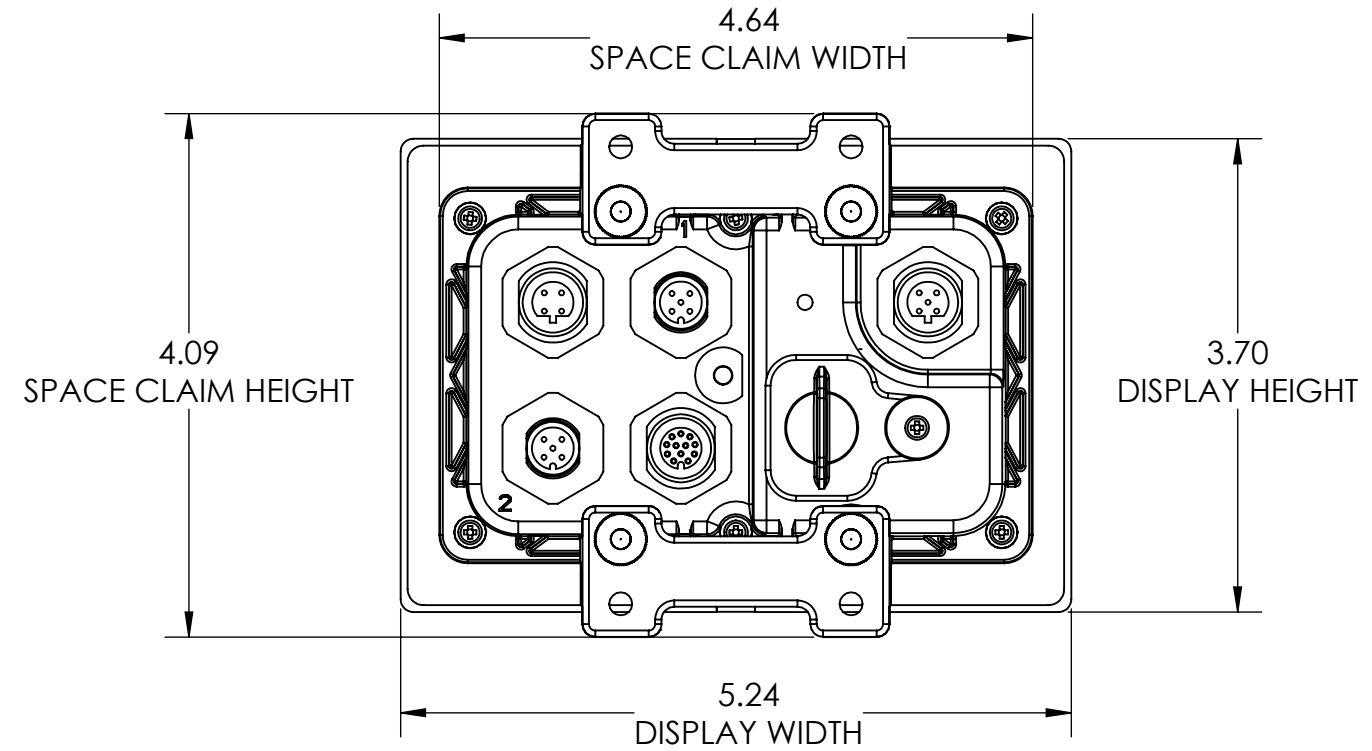
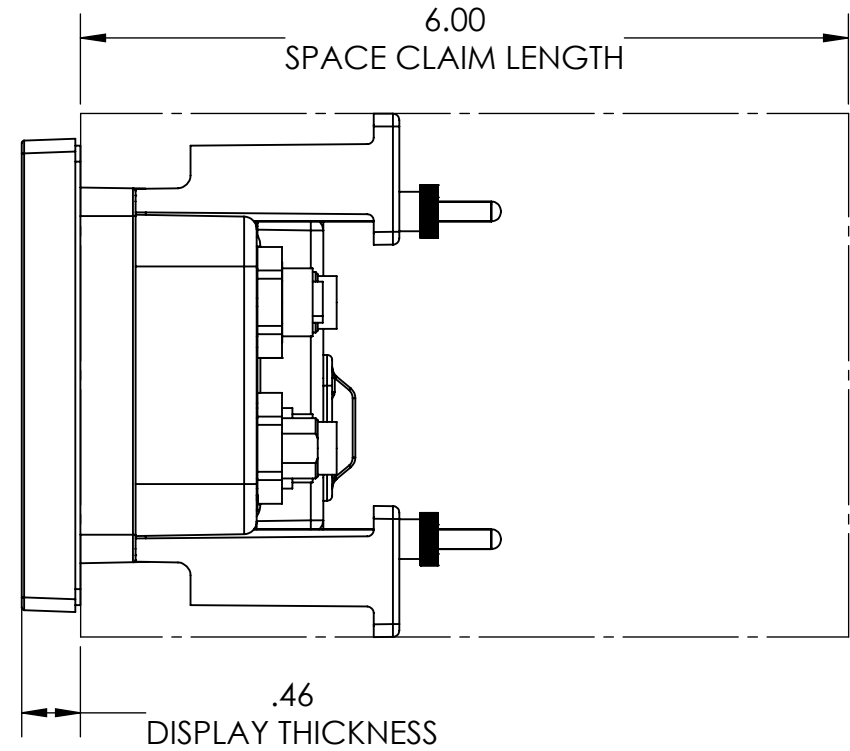
## RELEASE TIMELINE

The 5" display is provided with all Seakeeper 3 and Seakeeper 6 stabilizers. All other SEAKEEPER models will be supplied with the new display beginning **October 1, 2017**. At that time, an upgrade kit will be available for purchase to integrate with existing SEAKEEPER stabilizers in the SK series product line.

8 7 6 5 4 3 2 1

REV NO.	ECN NO.	ZONE	DESCRIPTION	DATE	APPRVD.
1			RELEASED FOR PRODUCTION	2/24/2017	BEN

D  
C  
B  
A



**PROPRIETARY AND CONFIDENTIAL**  
 THE INFORMATION CONTAINED IN THIS DRAWING IS THE SOLE PROPERTY OF SEAKEEPER INCORPORATED. ANY REPRODUCTION IN PART OR AS A WHOLE WITHOUT THE WRITTEN PERMISSION OF SEAKEEPER IS PROHIBITED.

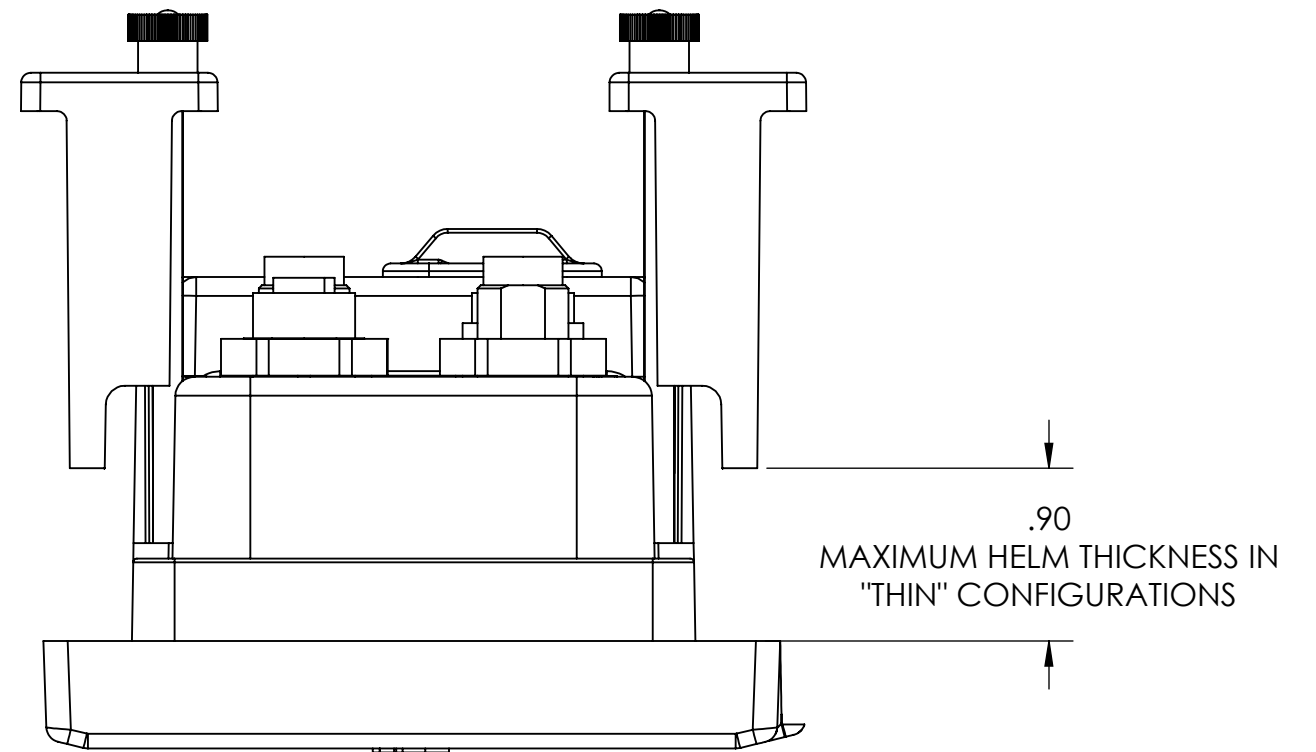
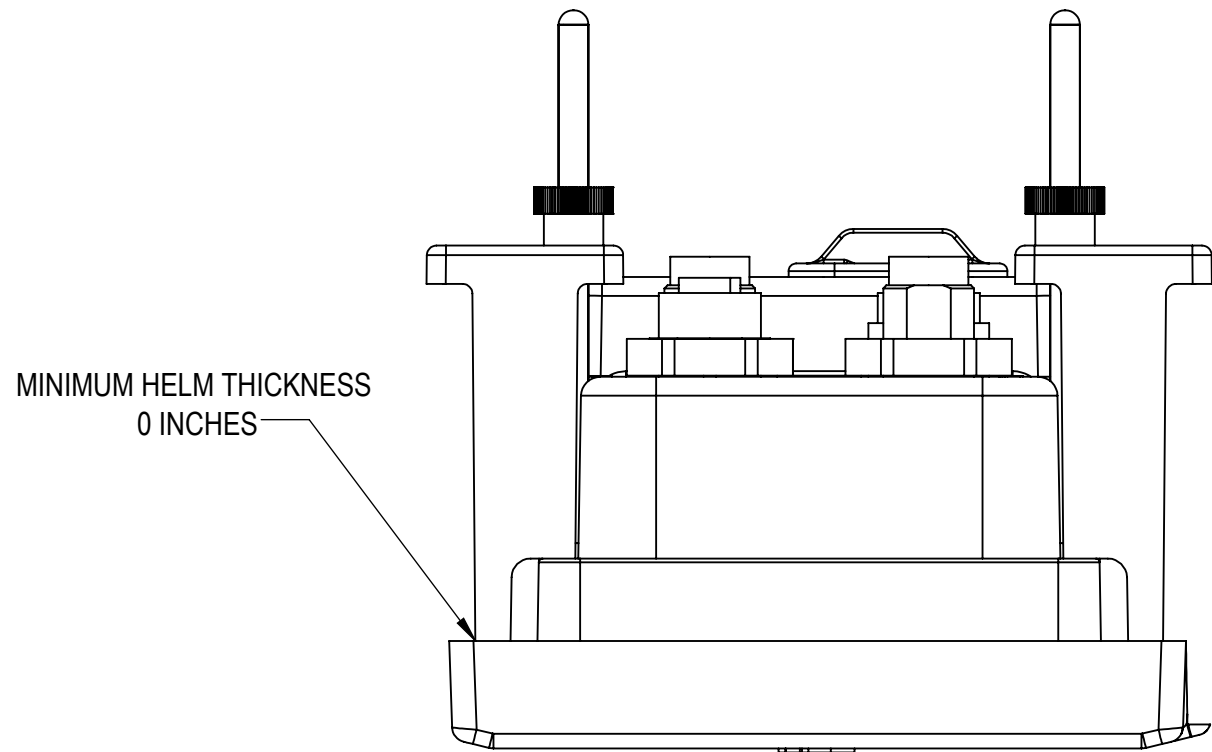


WEIGHT - LBS : ---	DRAWN: BEN	DATE: 10JAN2017
MATERIAL: ---	ENG APPR:	DATE:
	PROD APPR:	DATE:

NAME: ENVELOPE AND MOUNTING DETAILS, 5 INCH OPERATOR DISPLAY	
DWG NUMBER <b>90438</b>	REV. NO. SHEET NO. <b>1 1 OF 4</b>

8 7 6 5 4 3 2 1

# MOUNTING CLAMPS "THIN" HELM CONFIGURATIONS



**PROPRIETARY AND CONFIDENTIAL**

THE INFORMATION CONTAINED IN THIS DRAWING IS THE SOLE PROPERTY OF SEAKEEPER INCORPORATED. ANY REPRODUCTION IN PART OR AS A WHOLE WITHOUT THE WRITTEN PERMISSION OF SEAKEEPER IS PROHIBITED.



Seakeeper Inc. 44425 Pecan Court, Suite 151 California, MD 20619

NAME: ENVELOPE AND MOUNTING DETAILS, 5 INCH OPERATOR DISPLAY

WEIGHT - LBS : ---

MATERIAL: ---

DRAWN: BEN

DATE: 10JAN2017

ENG APPR:

DATE:

PROD APPR:

DATE:

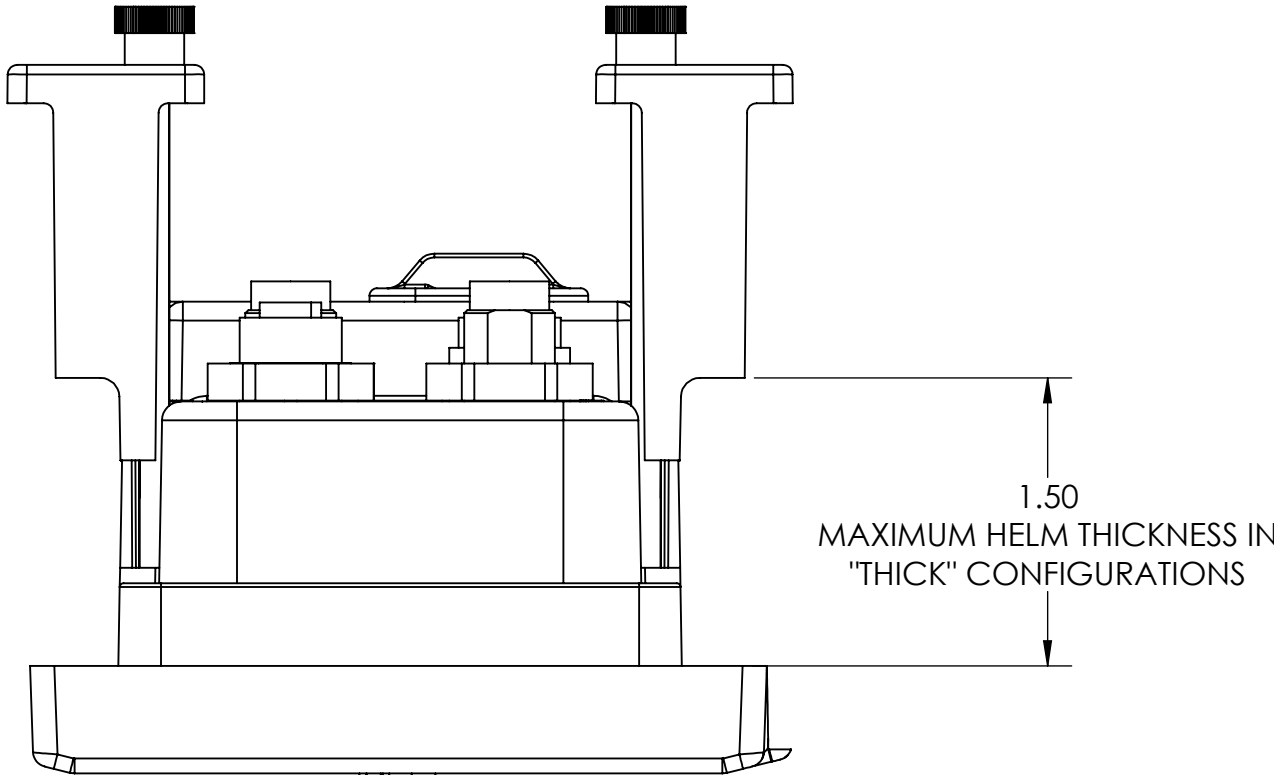
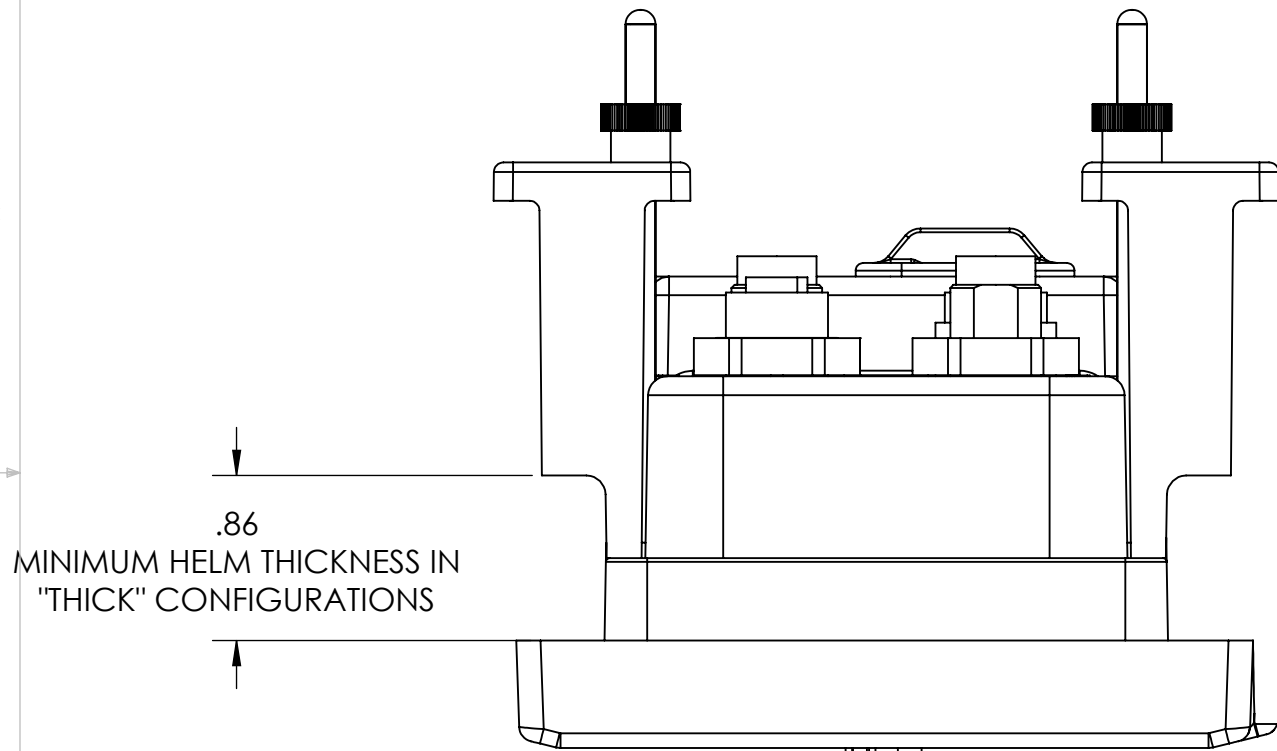
DWG NUMBER

**90438**

REV. NO. SHEET NO.

**1** 2 OF 4

# MOUNTING CLAMPS "THICK" HELM CONFIGURATIONS



**PROPRIETARY AND CONFIDENTIAL**

THE INFORMATION CONTAINED IN THIS DRAWING IS THE SOLE PROPERTY OF SEAKEEPER INCORPORATED. ANY REPRODUCTION IN PART OR AS A WHOLE WITHOUT THE WRITTEN PERMISSION OF SEAKEEPER IS PROHIBITED.



Seakeeper Inc. 44425 Pecan Court, Suite 151 California, MD 20619

NAME: ENVELOPE AND MOUNTING DETAILS, 5 INCH OPERATOR DISPLAY

WEIGHT - LBS : ---

MATERIAL: ---

DRAWN: BEN DATE: 10JAN2017

ENG APPR: DATE:

PROD APPR: DATE:

DWG NUMBER

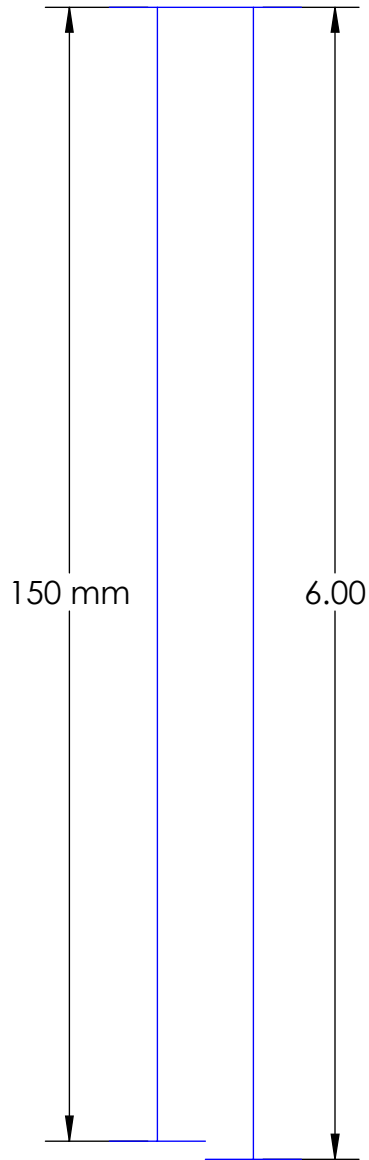
**90438**

REV. NO. SHEET NO.

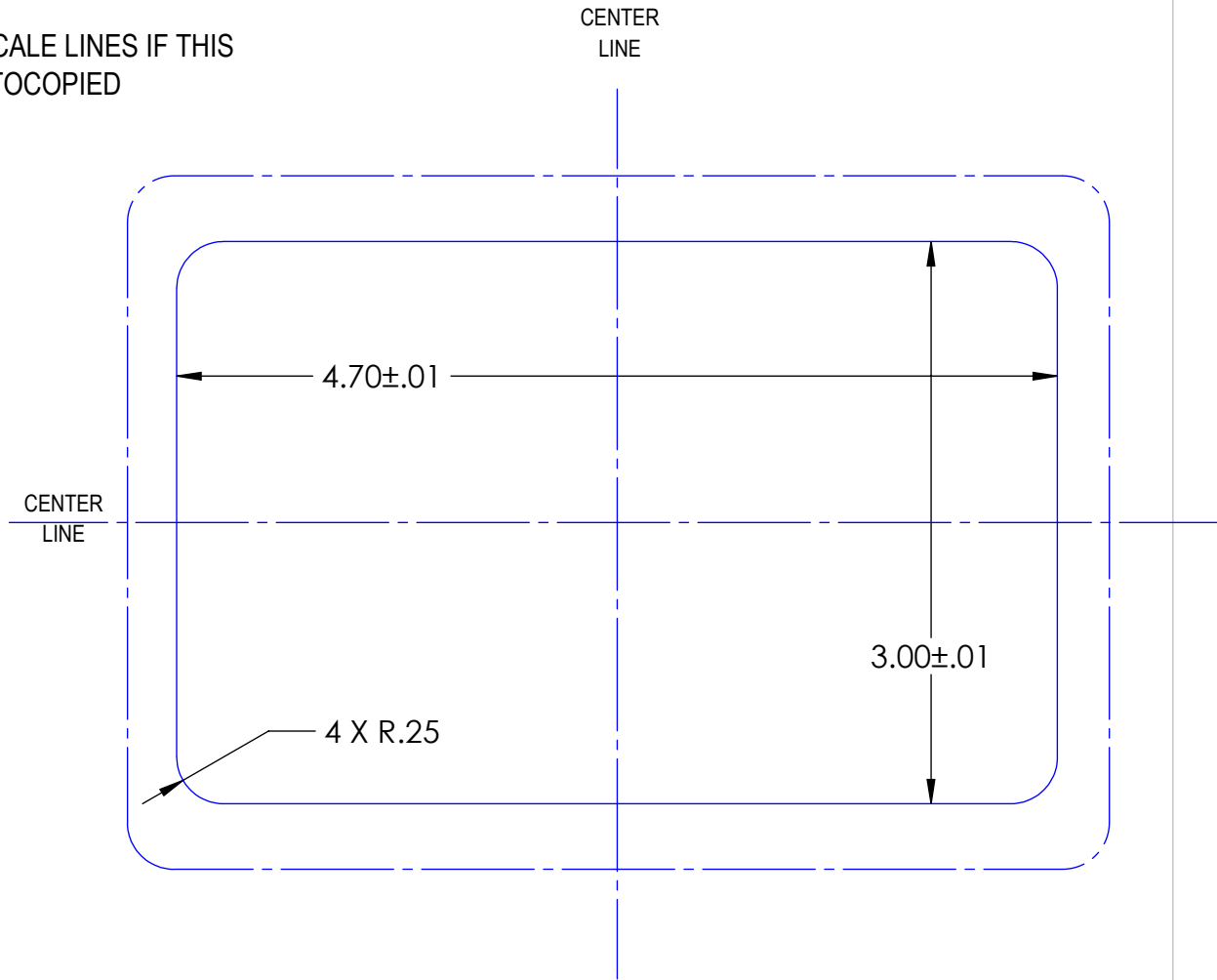
**1** 3 OF 4

NOTES:

1. USE THIS TEMPLATE FOR STANDARD THROUGH THE HELM INSTALLATION
2. PRINT 1:1 SCALE
3. MAKE SURE TO CHECK THE MEASUREMENTS AND SCALE LINES IF THIS TEMPLATE IS PRINTED FROM A COMPUTER OR PHOTOCOPIED
4. TEMPLATE LINE LEGEND: ——— CUT  
- - - - - REFERENCE



SCALE LINES



***PROPRIETARY AND CONFIDENTIAL***

THE INFORMATION CONTAINED IN THIS DRAWING IS THE SOLE PROPERTY OF SEAKEEPER INCORPORATED. ANY REPRODUCTION IN PART OR AS A WHOLE WITHOUT THE WRITTEN PERMISSION OF SEAKEEPER IS PROHIBITED.



Seakeeper Inc. 44425 Pecan Court, Suite 151 California, MD 20619

WEIGHT - LBS :	---
MATERIAL:	---

DRAWN:	DATE:
BEN	10JAN2017
ENG APPR:	DATE:
PROD APPR:	DATE:

NAME: ENVELOPE AND MOUNTING DETAILS, 5 INCH OPERATOR DISPLAY	
DWG NUMBER	REV. NO.   SHEET NO.
<b>90438</b>	<b>1</b>   4 OF 4