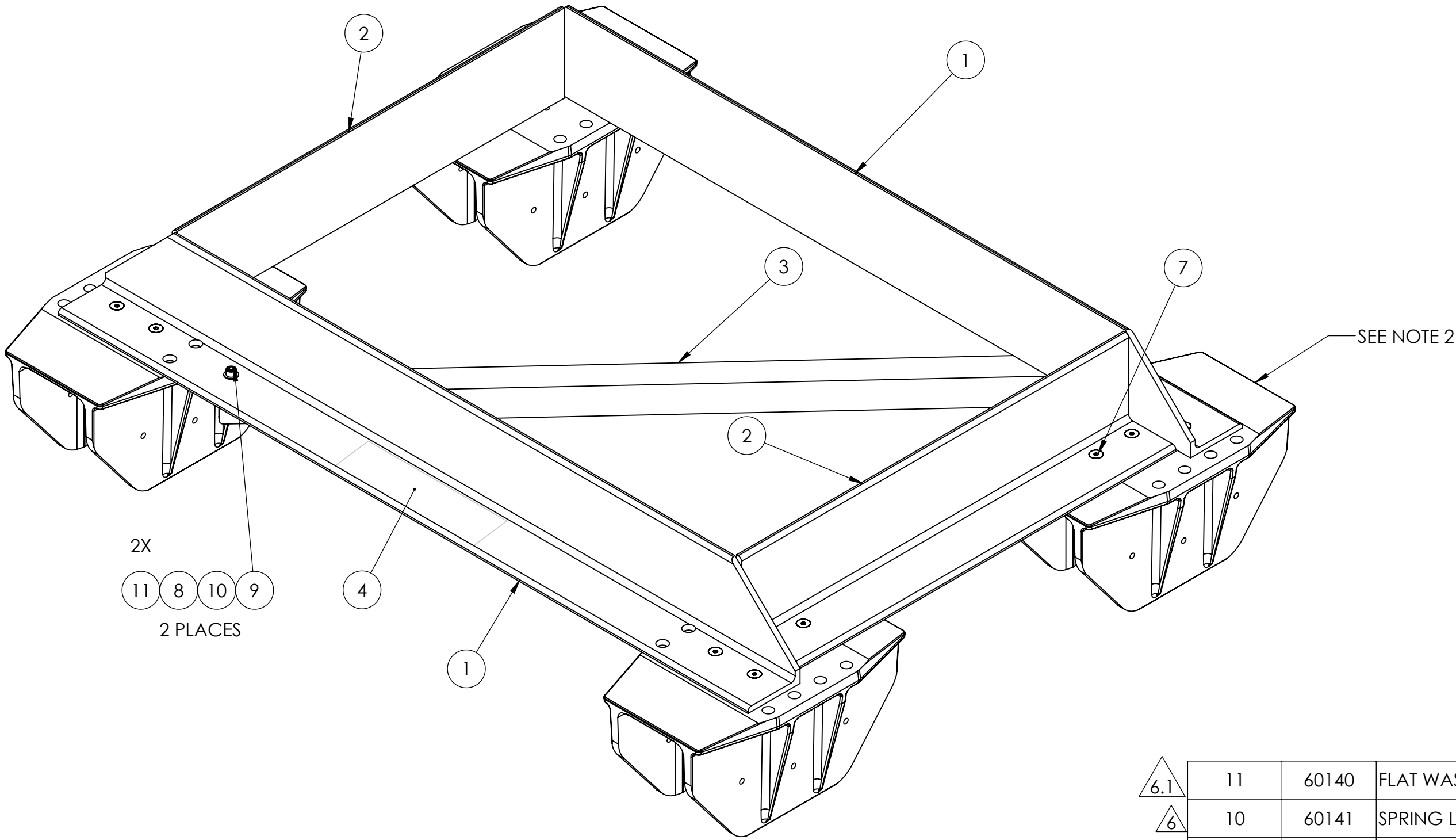


- NOTES:
- 1) THE FIXTURE MUST BE USED TO CHECK FIT AND SPACING OF SADDLES RELATIVE TO HULL STRUCTURE AS WELL AS LOCATE SADDLES ACCURATELY DURING THE BONDING PROCESS.
 - 2) SADDLE IS COMPLETELY SYMMETRICAL AND CAN BE USED IN ANY OF THE FOUR LOCATIONS.
 - 3) THE GYRO'S FOUNDATION EXTENDS BEYOND THE PLAN DIMENSIONS OF THIS FIXTURE. IT IS IMPORTANT THAT THE BUILDER / DESIGNER/ INSTALLER REVIEWS THE INSTALLATION MANUAL AND INSTALLATION DRAWING FOR THE GYRO MODEL BEING INSTALLED. THE DRAWING SHOWS RELATIONSHIPS BETWEEN SADDLE DIMENSIONS AND OVERALL FOUNDATION DIMENSIONS.

REVISIONS					
REV.	ECN NO.	ZONE	DESCRIPTION	DATE	APPROVED
2	ECN0032		1. ADDED ITEM 12 TO BOM.	04NOV10	BHS BRD
3	-		1. ADDED APPLICABILITY TABLE TO BOTTOM, CENTER OF DRAWING. 2. REMOVED "M21000" WORDING FROM TITLE.	17MAY11	BHS BRD
4	ECN0096		1. UPDATED APPLICABILITY TABLE TO INCLUDE M26. 2. SORTED BOM BY PART NUMBER. 3. UPDATED NOTE 3.	05JUN12	BHS BRD
5	-		1. REMOVED APPLICABILITY TABLE. 2. UPDATED NOTES 2 & 3.	07AUG14	BRD
6	-		REPLACED 60151 WITH 60141.	2/14/2019	BRD
6.1	-		REPLACED 60150 WITH 60140.	4/23/2019	BRD



6.1	11	60140	FLAT WASHER, 3/8 X 7/8 OD	4	
6	10	60141	SPRING LOCK WASHER, 3/8	2	
	9	60126	SCREW, SOCKET HD CAP .38-16 X 1.5 FULL TD	2	
	8	60125	NUT, FULL HEX .38-16	2	
	7	60122	SCREW, SOCKET HD FLAT .38-16 X 0.75 FULL TD	16	
	6	40192	HEX KEY WRENCH, 7/32	1	
	5	40191	HEX KEY WRENCH, 5/16	1	
	4	40158	CAUTION LABEL	1	
	3	10515	INSTALLATION JIG ANGLE - DIAG	1	
	2	10514	INSTALLATION FIXTURE ANGLE - SHORT	2	
	1	10513	INSTALLATION FIXTURE ANGLE- LONG	2	
ITEM NO.	PART NO.	DESCRIPTION		QTY	NOTE

WEIGHT - LBS :
146.15

MATERIAL:

PROPRIETARY AND CONFIDENTIAL

THE INFORMATION CONTAINED IN THIS DRAWING IS THE SOLE PROPERTY OF SEAKEEPER INCORPORATED. ANY REPRODUCTION IN PART OR AS A WHOLE WITHOUT THE WRITTEN PERMISSION OF SEAKEEPER IS PROHIBITED.

DRAWN: BHS
ENG APPR: BRD
PROD APPR:

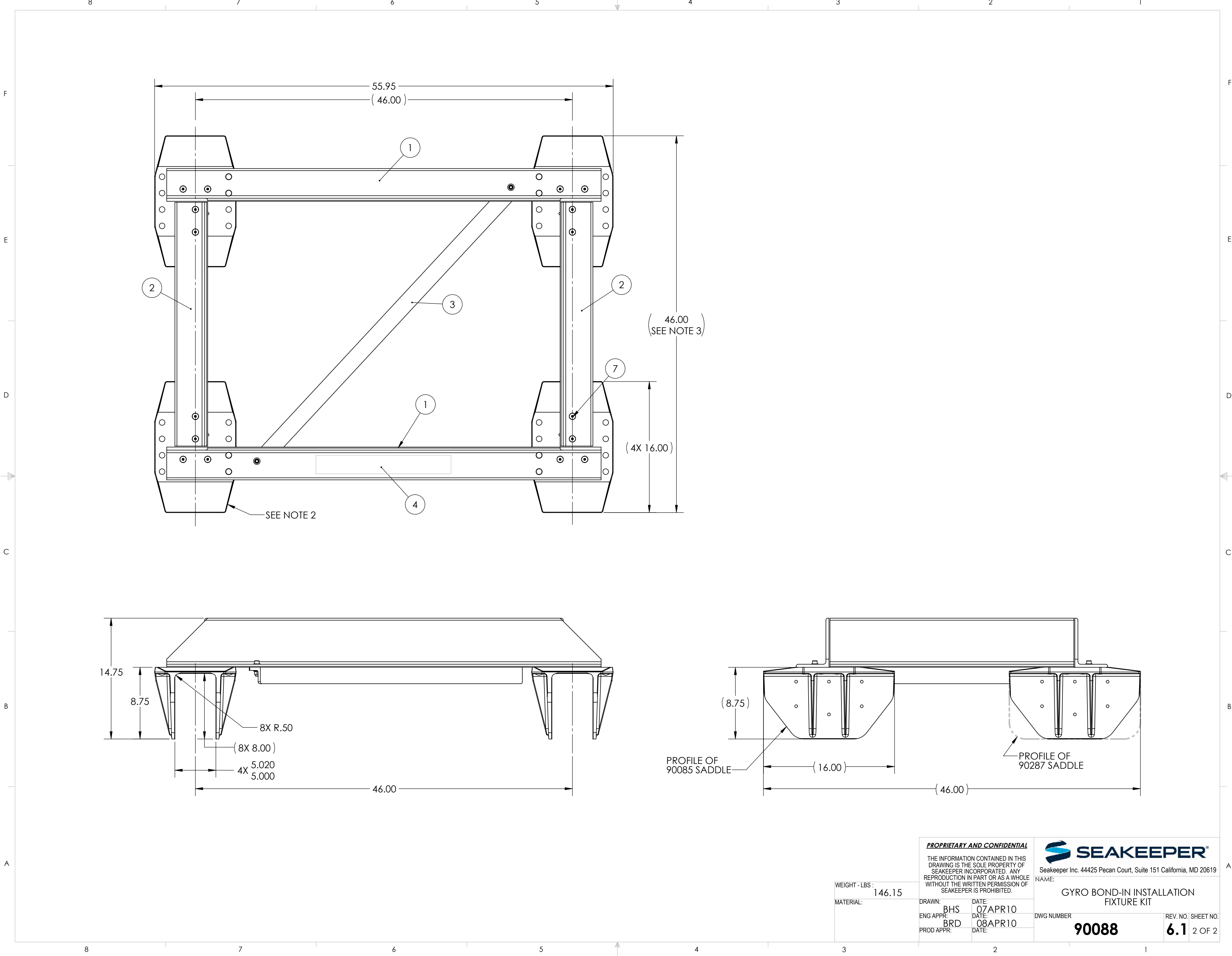
DATE: 07APR10
DATE: 08APR10
DATE:

Seakeeper Inc. 44425 Pecan Court, Suite 151 California, MD 20619

NAME: GYRO BOND-IN INSTALLATION FIXTURE KIT

DWG NUMBER 90088

REV. NO. SHEET NO. 6.1 1 OF 2



WEIGHT - LBS : 146.15
MATERIAL:

PROPRIETARY AND CONFIDENTIAL
THE INFORMATION CONTAINED IN THIS DRAWING IS THE SOLE PROPERTY OF SEAKEEPER INCORPORATED. ANY REPRODUCTION IN PART OR AS A WHOLE WITHOUT THE WRITTEN PERMISSION OF SEAKEEPER IS PROHIBITED.

DRAWN: BHS
ENG APPR: BRD
PROD APPR:
DATE: 07APR10
DATE: 08APR10
DATE:

SEAKEEPER®
Seakeeper Inc. 44425 Pecan Court, Suite 151 California, MD 20619
NAME:

GYRO BOND-IN INSTALLATION
FIXTURE KIT

DWG NUMBER 90088
REV. NO. SHEET NO. 6.1 2 OF 2