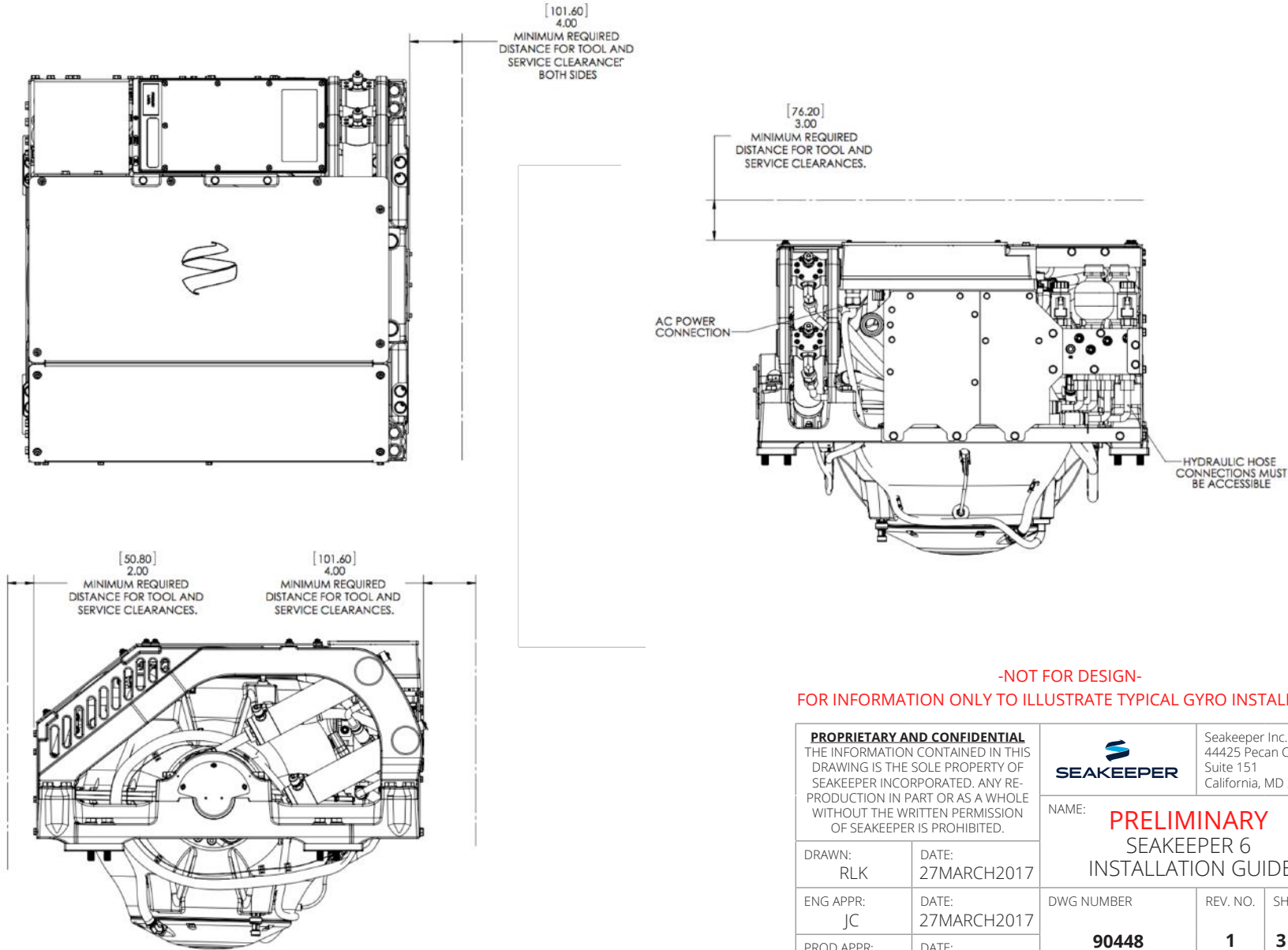





INSTALLATION GUIDE

OVERVIEW	INSTALLATION METHOD	DRAWING PAGE
Clearances	-----	3
New Installation	BOLT-IN METHOD	4
	BOND-IN METHOD	9
REFIT INSTALLATION WITH CLEARANCE BETWEEN STRINGERS OF:		
566 mm – 706 mm (22.29 in – 27.81 in)	BOLT-IN METHOD	5
	BOND-IN METHOD	10
591 mm – 785 mm (23.28 in – 30.90 in)	BOLT-IN METHOD	6
	BOND-IN METHOD	10
595 mm – 817 mm (23.42 in – 32.18 in)	BOLT-IN METHOD	7
	BOND-IN METHOD	10
817 mm – 927 mm (32.18 in – 36.50 in)	BOLT-IN METHOD	8
	BOND-IN METHOD	10
Greater Than 927 mm (36.50 in)	BOLT-IN METHOD	4
	BOND-IN METHOD	9
Longitudinal & Transverse Lamination	BOLT-IN METHOD	11 - 12
	BOND-IN METHOD	13 - 14

SEAKEEPER 6
CLEARANCES

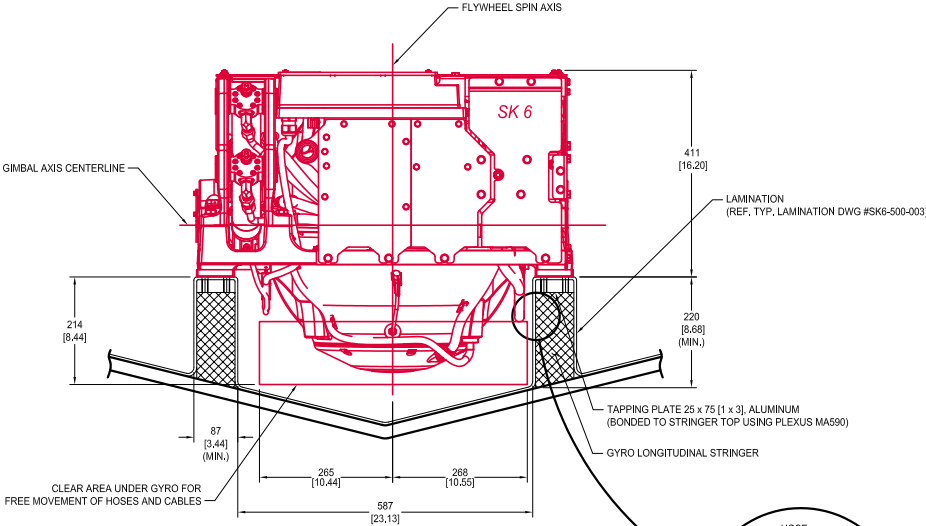
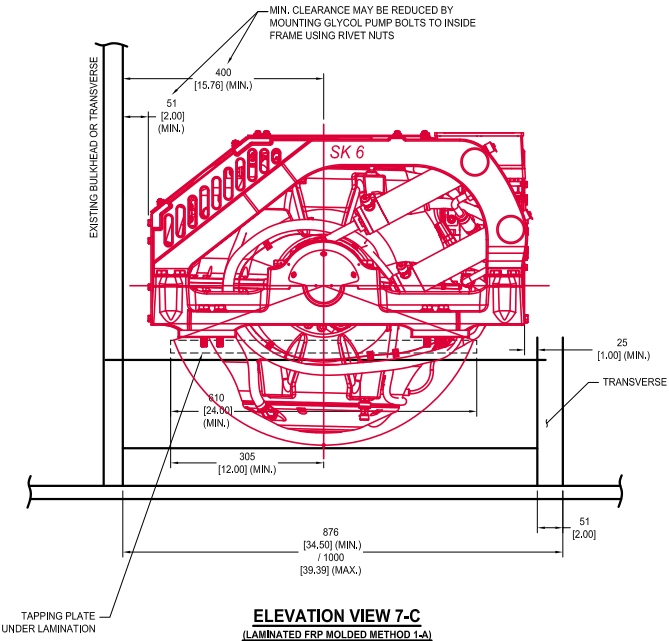


-NOT FOR DESIGN-
FOR INFORMATION ONLY TO ILLUSTRATE TYPICAL GYRO INSTALLATION

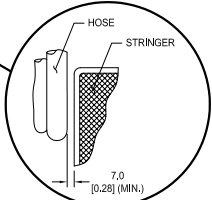
PROPRIETARY AND CONFIDENTIAL THE INFORMATION CONTAINED IN THIS DRAWING IS THE SOLE PROPERTY OF SEAKEEPER INCORPORATED. ANY REPRODUCTION IN PART OR AS A WHOLE WITHOUT THE WRITTEN PERMISSION OF SEAKEEPER IS PROHIBITED.		 Seakeeper Inc. 44425 Pecan Court Suite 151 California, MD 20619	
DRAWN: RLK		DATE: 27MARCH2017	
ENG APPR: JC		DATE: 27MARCH2017	
PROD APPR:		DATE:	
		NAME: PRELIMINARY SEAKEEPER 6 INSTALLATION GUIDE	
DWG NUMBER 90448		REV. NO. 1	SHEET NO. 3 of 14

SEAKEEPER (SELLER) MAKES NO WARRANTIES, EXPRESS OR IMPLIED, INCLUDING NO WARRANTY OF MERCHANTABILITY OR FITNESS FOR A SPECIFIC PURPOSE THAT THE GENERIC DRAWINGS OF VARIOUS INSTALLATION DESIGNS PROVIDED BY SEAKEEPER (SELLER) WILL BE APPROPRIATE FOR CUSTOMER'S (BUYER'S) VESSEL. CUSTOMER'S OWN NAVAL ARCHITECT AND BOAT BUILDER MUST USE THEIR INDEPENDENT PROFESSIONAL JUDGEMENTS IN USING OR MODIFYING THESE DRAWINGS TO FIT THE SPECIFIC NEEDS, DESIGN AND LOAD-BEARING REQUIREMENTS OF CUSTOMER'S (BUYER'S) VESSEL.

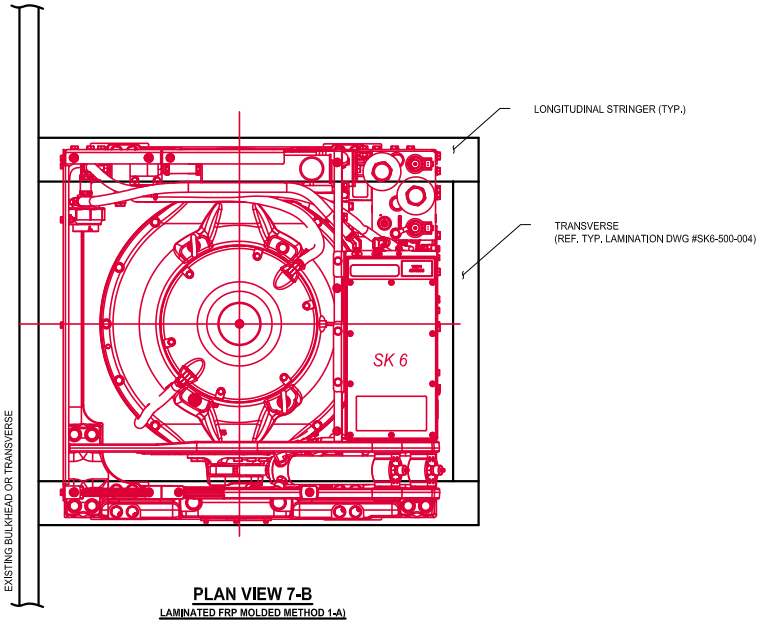
SECTION 1-A
SEAKEEPER 6 BOLT-IN METHOD
LAMINATED FRP MOLDED




SECTION 3-C
(LAMINATED FRP MOLDED METHOD 1-A)



MINIMAL CLEARANCE FOR CABLES / HOSES (TYP.)



-NOT FOR DESIGN-
FOR INFORMATION ONLY TO ILLUSTRATE TYPICAL GYRO INSTALLATION

PROPRIETARY AND CONFIDENTIAL THE INFORMATION CONTAINED IN THIS DRAWING IS THE SOLE PROPERTY OF SEAKEEPER INCORPORATED. ANY RE- PRODUCTION IN PART OR AS A WHOLE WITHOUT THE WRITTEN PERMISSION OF SEAKEEPER IS PROHIBITED.		 SEAKEEPER		Seakeeper Inc. 44425 Pecan Court Suite 151 California, MD 20619	
DRAWN: RLK		DATE: 27MARCH2017		NAME: PRELIMINARY SEAKEEPER 6 INSTALLATION GUIDE	
ENG APPR: JC		DATE: 27MARCH2017			
PROD APPR:		DATE:			
		DWG NUMBER 90448		REV. NO. 1	SHEET NO. 4 of 14

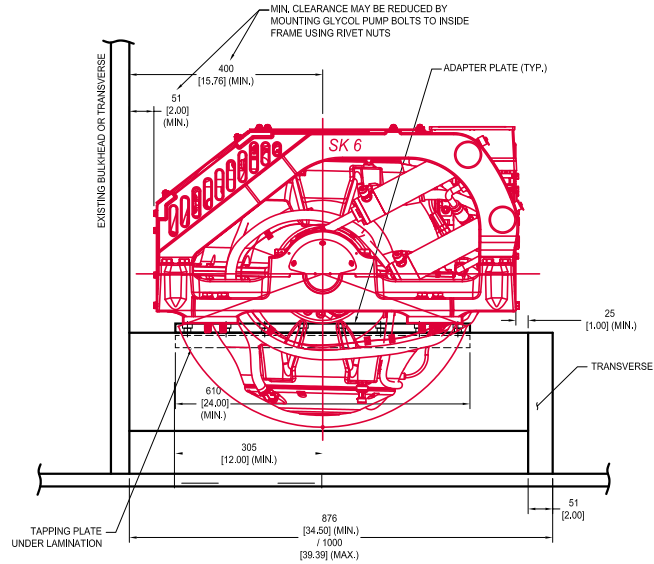
SEAKEEPER (SELLER) MAKES NO WARRANTIES, EXPRESS OR IMPLIED, INCLUDING NO WARRANTY OF MERCHANTABILITY OR FITNESS FOR A SPECIFIC PURPOSE THAT THE GENERIC DRAWINGS OF VARIOUS INSTALLATION DESIGNS PROVIDED BY SEAKEEPER (SELLER) WILL BE APPROPRIATE FOR CUSTOMER'S (BUYER'S) VESSEL. CUSTOMER'S OWN NAVAL ARCHITECT AND BOAT BUILDER MUST USE THEIR INDEPENDENT PROFESSIONAL JUDGEMENTS IN USING OR MODIFYING THESE DRAWINGS TO FIT THE SPECIFIC NEEDS, DESIGN AND LOAD-BEARING REQUIREMENTS OF CUSTOMER'S (BUYER'S) VESSEL.

SECTION 1-E

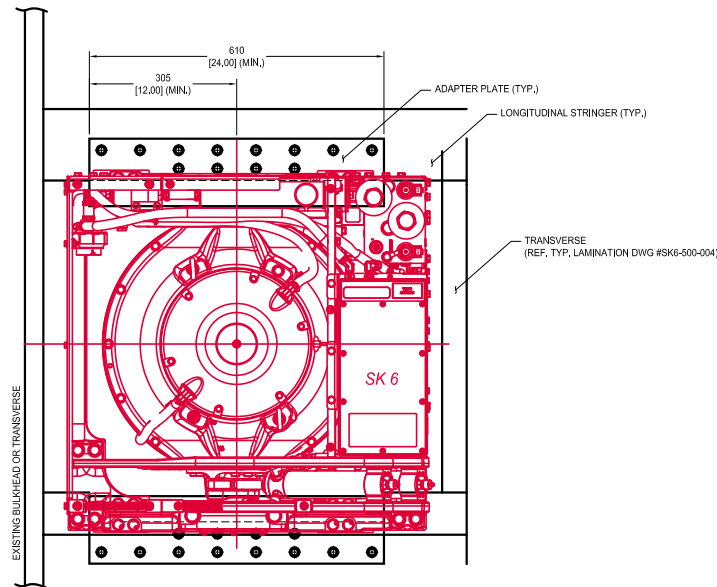
SEAKEEPER 6 BOLT-IN METHOD

LAMINATED WITH ADAPTER PLATE

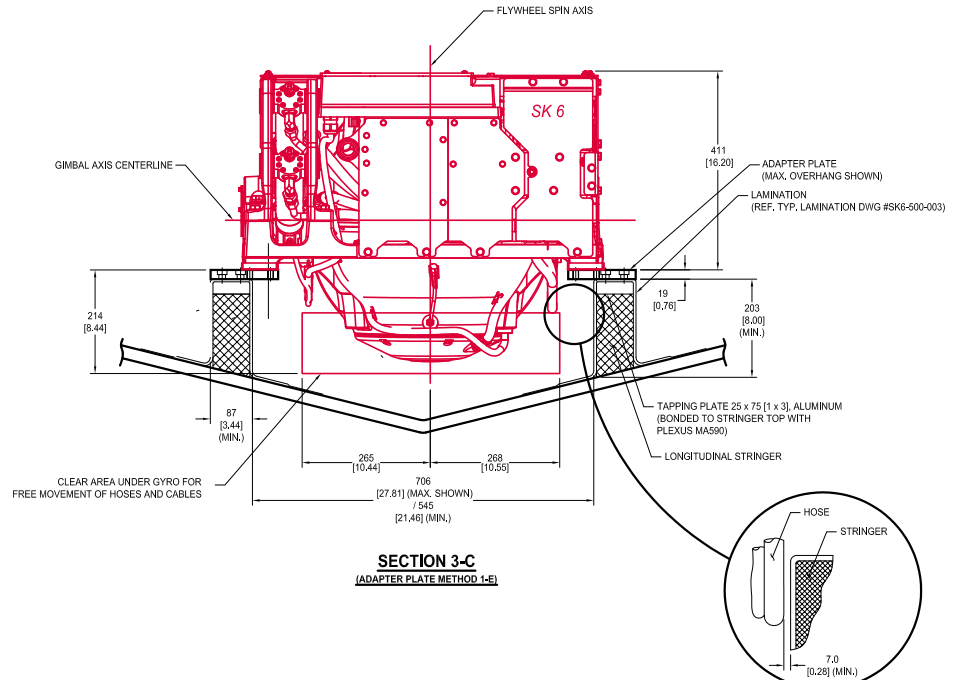
(FOR INCREASED CLEARANCE/TOLERANCE OR EXSISTING STRINGER LOCATION)



ELEVATION VIEW 7-C
(ADAPTER PLATE METHOD 1-E)




PLAN VIEW 7-B
(ADAPTER PLATE METHOD 1-E)



SECTION 3-C
(ADAPTER PLATE METHOD 1-E)

**MINIMAL CLEARANCE FOR
CABLES / HOSES (TYP.)**

-NOT FOR DESIGN-
FOR INFORMATION ONLY TO ILLUSTRATE TYPICAL GYRO INSTALLATION

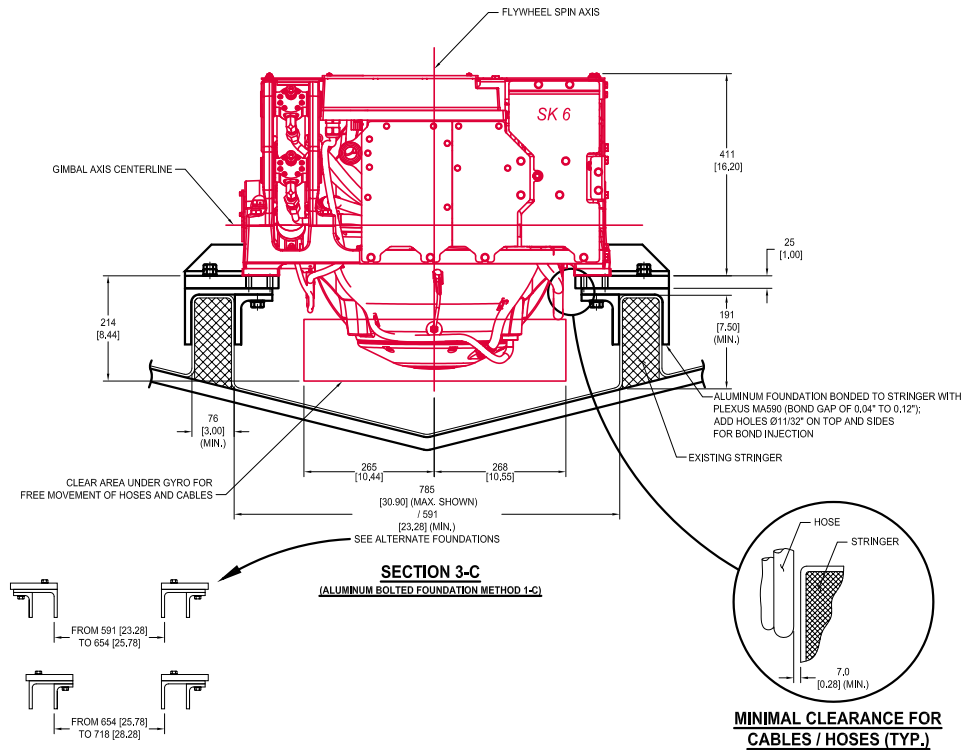
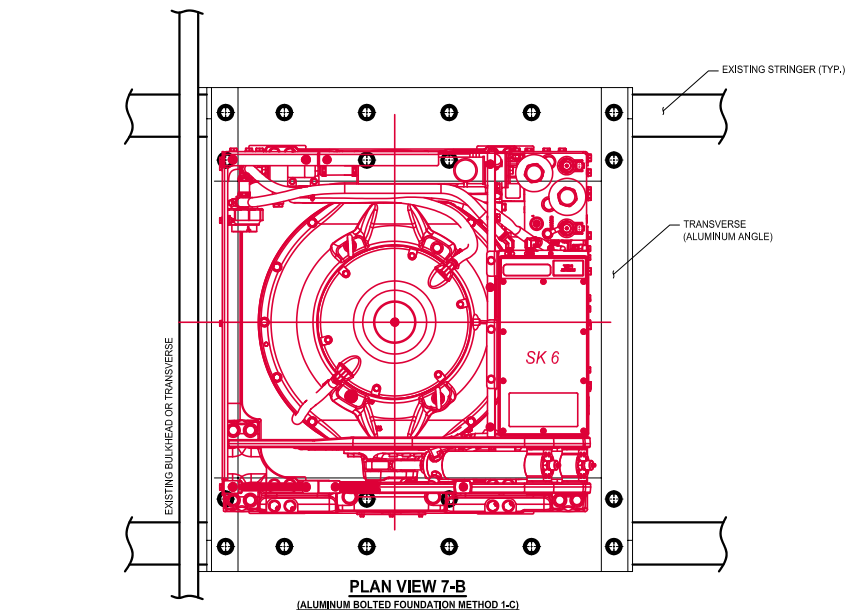
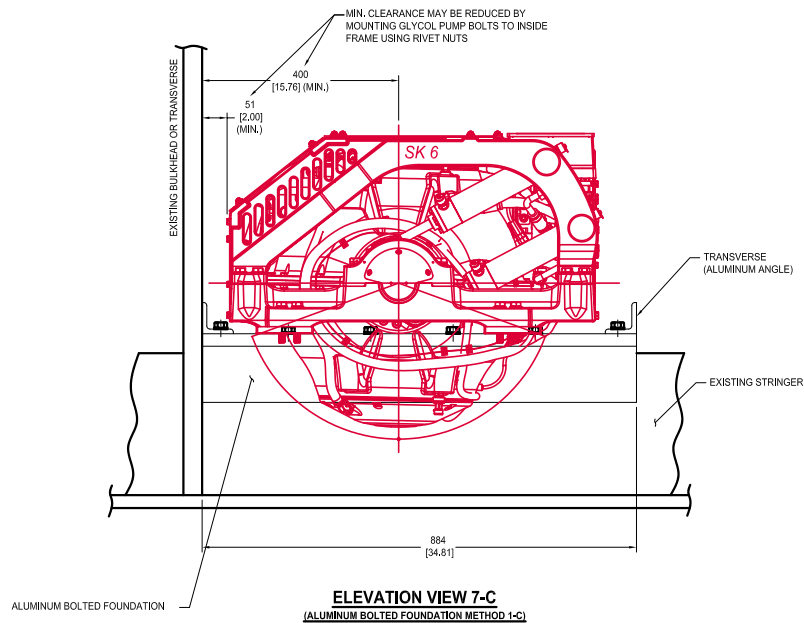
PROPRIETARY AND CONFIDENTIAL THE INFORMATION CONTAINED IN THIS DRAWING IS THE SOLE PROPERTY OF SEAKEEPER INCORPORATED. ANY REPRODUCTION IN PART OR AS A WHOLE WITHOUT THE WRITTEN PERMISSION OF SEAKEEPER IS PROHIBITED.		 Seakeeper Inc. 44425 Pecan Court Suite 151 California, MD 20619	
NAME: PRELIMINARY SEAKEEPER 6 INSTALLATION GUIDE		DWG NUMBER 90448	
DRAWN: RLK	DATE: 27MARCH2017	REV. NO. 1	SHEET NO. 5 of 14
ENG APPR: JC	DATE: 27MARCH2017		
PROD APPR:	DATE:		

SEAKEEPER (SELLER) MAKES NO WARRANTIES, EXPRESS OR IMPLIED, INCLUDING NO WARRANTY OF MERCHANTABILITY OR FITNESS FOR A SPECIFIC PURPOSE THAT THE GENERIC DRAWINGS OF VARIOUS INSTALLATION DESIGNS PROVIDED BY SEAKEEPER (SELLER) WILL BE APPROPRIATE FOR CUSTOMER'S (BUYER'S) VESSEL. CUSTOMER'S OWN NAVAL ARCHITECT AND BOAT BUILDER MUST USE THEIR INDEPENDENT PROFESSIONAL JUDGEMENTS IN USING OR MODIFYING THESE DRAWINGS TO FIT THE SPECIFIC NEEDS, DESIGN AND LOAD-BEARING REQUIREMENTS OF CUSTOMER'S (BUYER'S) VESSEL.

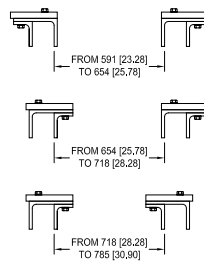
SECTION 1-C

SEAKEEPER 6 BOLT-IN METHOD


ALUMINUM BOLTED FOUNDATION



ALTERNATE FOUNDATIONS BASED ON STRINGER SPACING

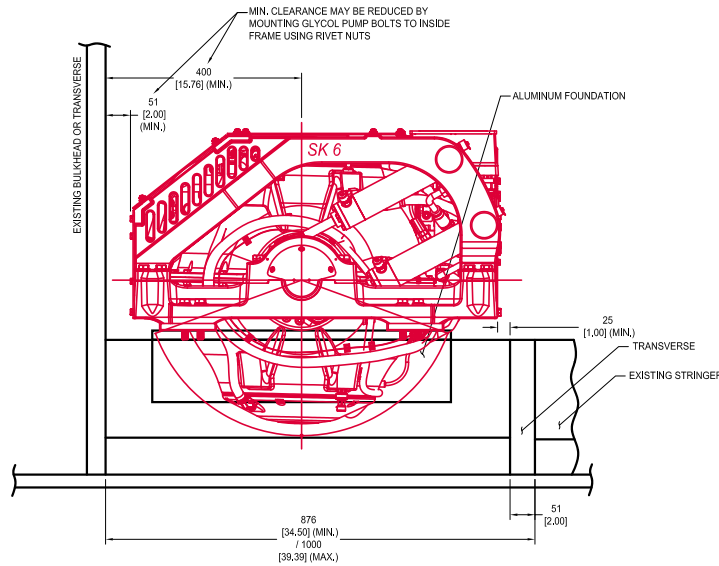


-NOT FOR DESIGN-
FOR INFORMATION ONLY TO ILLUSTRATE TYPICAL GYRO INSTALLATION

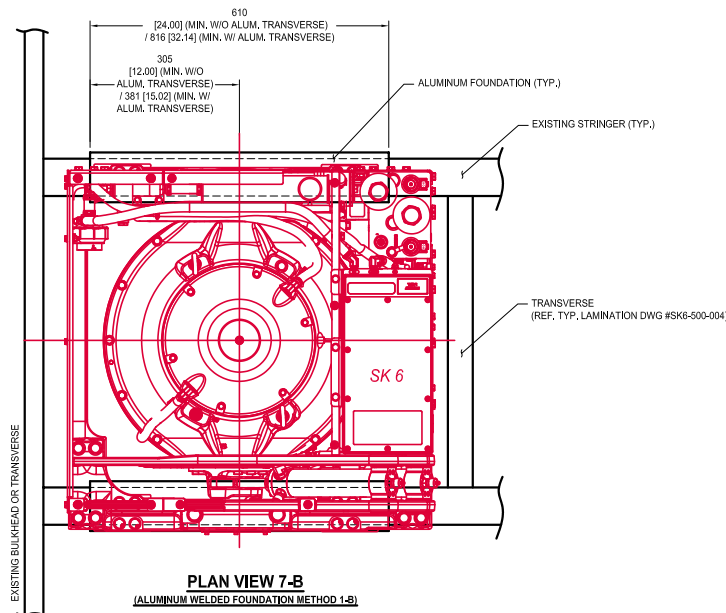
PROPRIETARY AND CONFIDENTIAL THE INFORMATION CONTAINED IN THIS DRAWING IS THE SOLE PROPERTY OF SEAKEEPER INCORPORATED. ANY REPRODUCTION IN PART OR AS A WHOLE WITHOUT THE WRITTEN PERMISSION OF SEAKEEPER IS PROHIBITED.		 Seakeeper Inc. 44425 Pecan Court Suite 151 California, MD 20619	
DRAWN: RLK ENG APPR: JC PROD APPR:		NAME: PRELIMINARY SEAKEEPER 6 INSTALLATION GUIDE	
DATE: 27MARCH2017 DATE: 27MARCH2017 DATE:		DWG NUMBER 90448	REV. NO. 1
		SHEET NO. 6 of 14	

SEAKEEPER (SELLER) MAKES NO WARRANTIES, EXPRESS OR IMPLIED, INCLUDING NO WARRANTY OF MERCHANTABILITY OR FITNESS FOR A SPECIFIC PURPOSE THAT THE GENERIC DRAWINGS OF VARIOUS INSTALLATION DESIGNS PROVIDED BY SEAKEEPER (SELLER) WILL BE APPROPRIATE FOR CUSTOMER'S (BUYER'S) VESSEL. CUSTOMER'S OWN NAVAL ARCHITECT AND BOAT BUILDER MUST USE THEIR INDEPENDENT PROFESSIONAL JUDGEMENTS IN USING OR MODIFYING THESE DRAWINGS TO FIT THE SPECIFIC NEEDS, DESIGN AND LOAD-BEARING REQUIREMENTS OF CUSTOMER'S (BUYER'S) VESSEL.

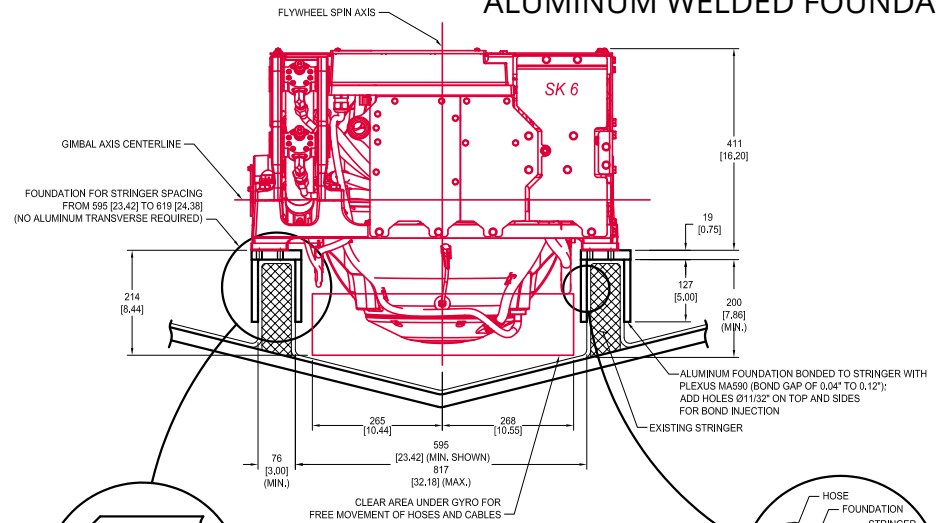
SECTION 1-B SEAKEEPER 6 BOLT-IN METHOD ALUMINUM WELDED FOUNDATION



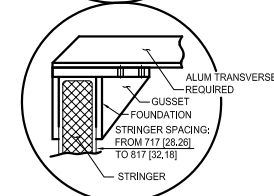
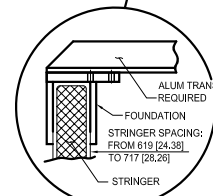
ELEVATION VIEW 7-C
(ALUMINUM WELDED FOUNDATION METHOD 1-B)



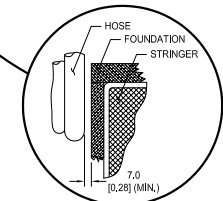
PLAN VIEW 7-B
(ALUMINUM WELDED FOUNDATION METHOD 1-B)



SECTION 3-C
(ALUMINUM WELDED FOUNDATION METHOD 1-B)



**ALTERNATE FOUNDATIONS
BASED ON STRINGER SPACING**



**MINIMAL CLEARANCE FOR
CABLES / HOSES (TYP.)**

-NOT FOR DESIGN-
FOR INFORMATION ONLY TO ILLUSTRATE TYPICAL GYRO INSTALLATION

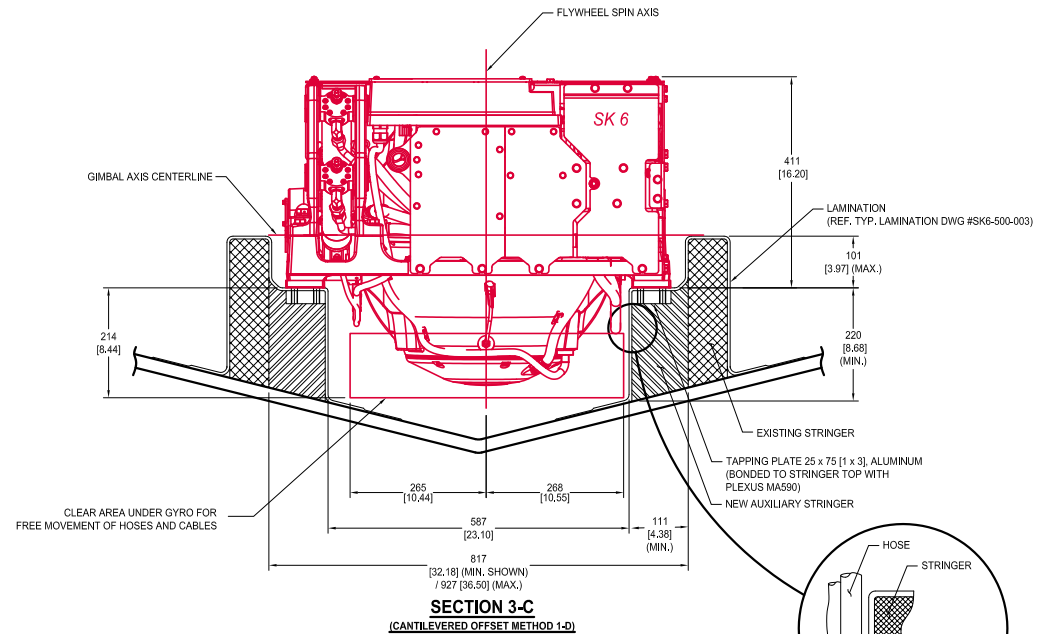
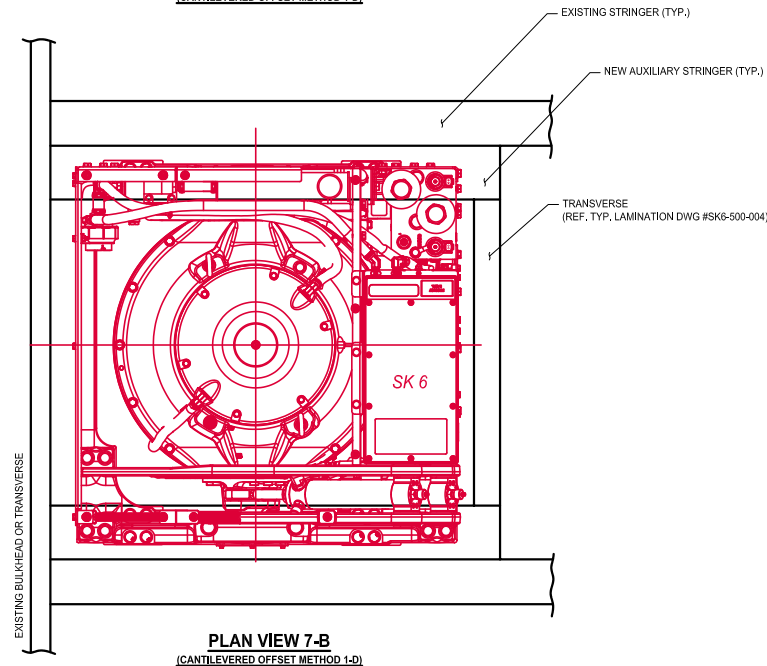
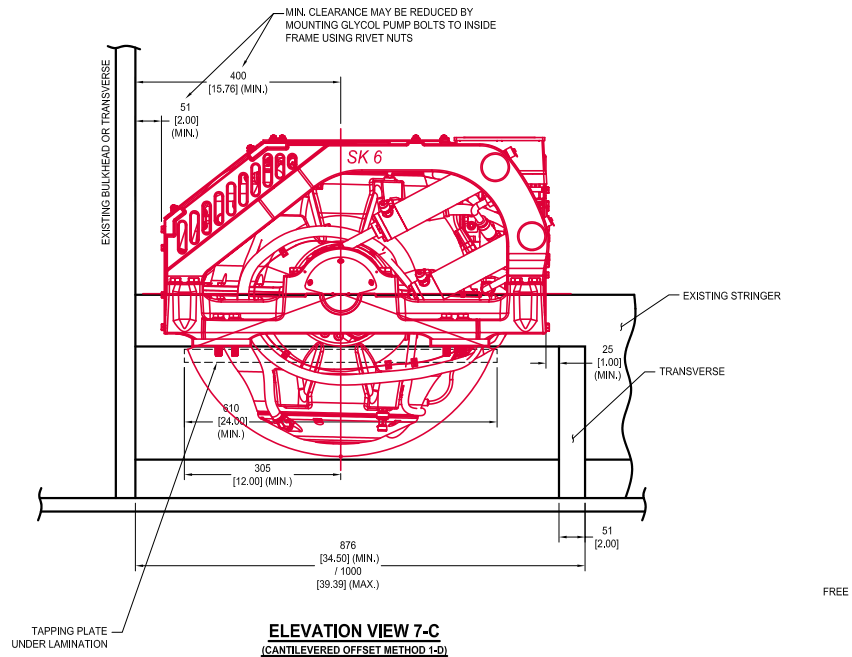
PROPRIETARY AND CONFIDENTIAL
THE INFORMATION CONTAINED IN THIS DRAWING IS THE SOLE PROPERTY OF SEAKEEPER INCORPORATED. ANY REPRODUCTION IN PART OR AS A WHOLE WITHOUT THE WRITTEN PERMISSION OF SEAKEEPER IS PROHIBITED.

DRAWN: RLK	DATE: 27MARCH2017
ENG APPR: JC	DATE: 27MARCH2017
PROD APPR:	DATE:

		Seakeeper Inc. 44425 Pecan Court Suite 151 California, MD 20619		
NAME:		PRELIMINARY SEAKEEPER 6 INSTALLATION GUIDE		
DWG NUMBER	REV. NO.	SHEET NO.		
90448	1	7 of 14		


SEAKEEPER (SELLER) MAKES NO WARRANTIES, EXPRESS OR IMPLIED, INCLUDING NO WARRANTY OF MERCHANTABILITY OR FITNESS FOR A SPECIFIC PURPOSE THAT THE GENERIC DRAWINGS OF VARIOUS INSTALLATION DESIGNS PROVIDED BY SEAKEEPER (SELLER) WILL BE APPROPRIATE FOR CUSTOMER'S (BUYER'S) VESSEL. CUSTOMER'S OWN NAVAL ARCHITECT AND BOAT BUILDER MUST USE THEIR INDEPENDENT PROFESSIONAL JUDGEMENTS IN USING OR MODIFYING THESE DRAWINGS TO FIT THE SPECIFIC NEEDS, DESIGN AND LOAD-BEARING REQUIREMENTS OF CUSTOMER'S (BUYER'S) VESSEL.

SECTION 1-D SEAKEEPER 6 BOLT-IN METHOD CANTILEVERED OFFSET



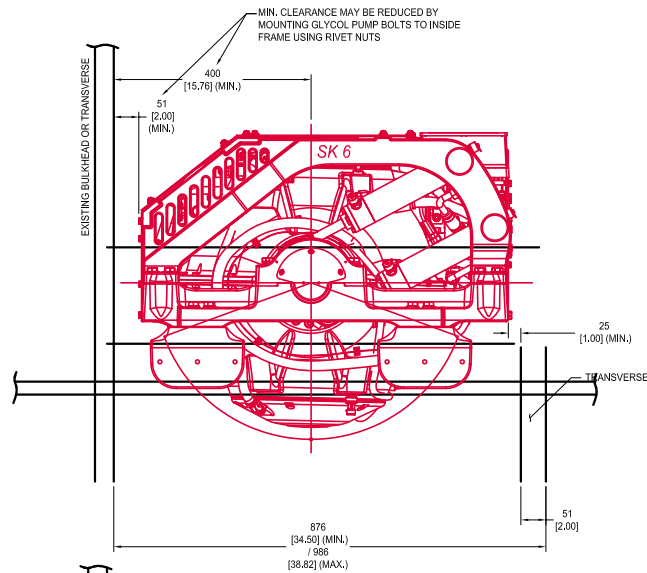
**MINIMAL CLEARANCE FOR
CABLES / HOSES (TYP.)**

-NOT FOR DESIGN-
FOR INFORMATION ONLY TO ILLUSTRATE TYPICAL GYRO INSTALLATION

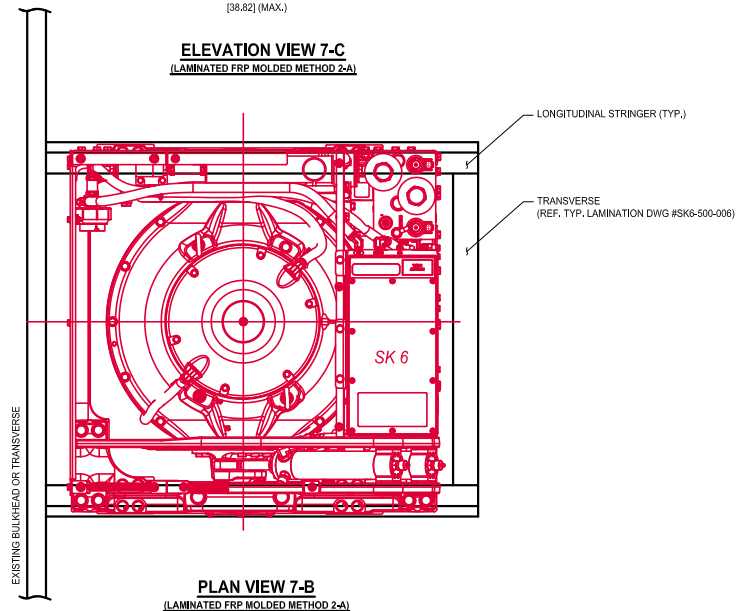
PROPRIETARY AND CONFIDENTIAL THE INFORMATION CONTAINED IN THIS DRAWING IS THE SOLE PROPERTY OF SEAKEEPER INCORPORATED. ANY REPRODUCTION IN PART OR AS A WHOLE WITHOUT THE WRITTEN PERMISSION OF SEAKEEPER IS PROHIBITED.		 Seakeeper Inc. 44425 Pecan Court Suite 151 California, MD 20619		
NAME: PRELIMINARY SEAKEEPER 6 INSTALLATION GUIDE				
DRAWN: RLK	DATE: 27MARCH2017	DWG NUMBER	REV. NO.	SHEET NO.
ENG APPR: JC	DATE: 27MARCH2017	90448	1	8 of 14
PROD APPR:	DATE:			

SEAKEEPER (SELLER) MAKES NO WARRANTIES, EXPRESS OR IMPLIED, INCLUDING NO WARRANTY OF MERCHANTABILITY OR FITNESS FOR A SPECIFIC PURPOSE THAT THE GENERIC DRAWINGS OF VARIOUS INSTALLATION DESIGNS PROVIDED BY SEAKEEPER (SELLER) WILL BE APPROPRIATE FOR CUSTOMER'S (BUYER'S) VESSEL. CUSTOMER'S OWN NAVAL ARCHITECT AND BOAT BUILDER MUST USE THEIR INDEPENDENT PROFESSIONAL JUDGEMENTS IN USING OR MODIFYING THESE DRAWINGS TO FIT THE SPECIFIC NEEDS, DESIGN AND LOAD-BEARING REQUIREMENTS OF CUSTOMER'S (BUYER'S) VESSEL.

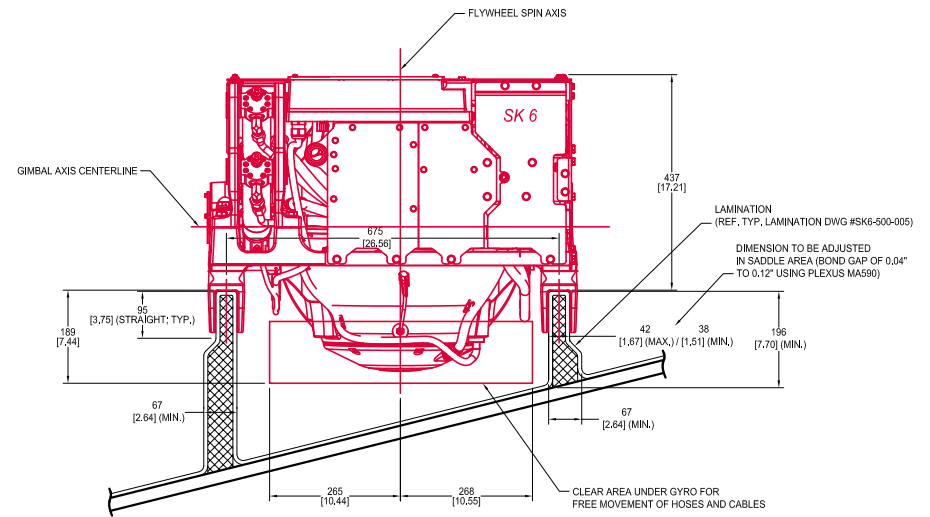
SECTION 2-A SEAKEEPER 6 BOND-IN METHOD LAMINATED FRP MOLDED



ELEVATION VIEW 7-C
(LAMINATED FRP MOLDED METHOD 2-A)




PLAN VIEW 7-B
(LAMINATED FRP MOLDED METHOD 2-A)



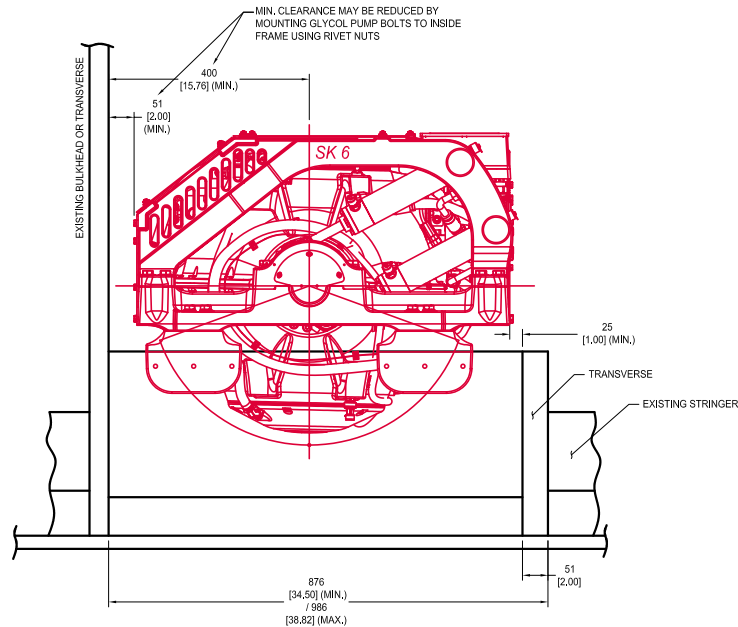
SECTION 3-C
(LAMINATED FRP MOLDED METHOD 2-A)

-NOT FOR DESIGN-
FOR INFORMATION ONLY TO ILLUSTRATE TYPICAL GYRO INSTALLATION

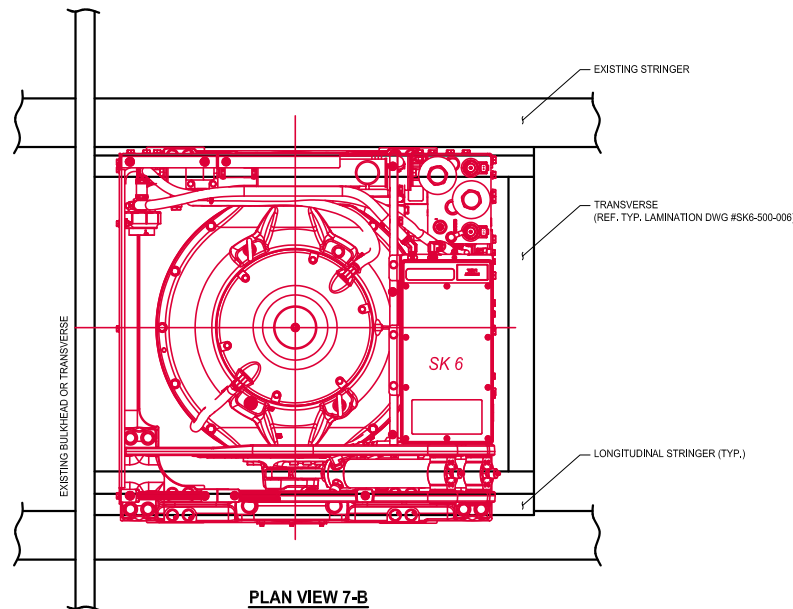
<div>PROPRIETARY AND CONFIDENTIAL</div> <div>THE INFORMATION CONTAINED IN THIS DRAWING IS THE SOLE PROPERTY OF SEAKEEPER INCORPORATED. ANY REPRODUCTION IN PART OR AS A WHOLE WITHOUT THE WRITTEN PERMISSION OF SEAKEEPER IS PROHIBITED.</div>		<div><div><div><div>SEAKEEPER</div></div><div>Seakeeper Inc. 44425 Pecan Court Suite 151 California, MD 20619</div></div></div>		
		NAME: PRELIMINARY SEAKEEPER 6 INSTALLATION GUIDE		
DRAWN: RLK	DATE: 27MARCH2017	DWG NUMBER 90448	REV. NO. 1	SHEET NO. 9 of 14
ENG APPR: JC	DATE: 27MARCH2017			
PROD APPR:	DATE:			

SEAKEEPER (SELLER) MAKES NO WARRANTIES, EXPRESS OR IMPLIED, INCLUDING NO WARRANTY OF MERCHANTABILITY OR FITNESS FOR A SPECIFIC PURPOSE THAT THE GENERIC DRAWINGS OF VARIOUS INSTALLATION DESIGNS PROVIDED BY SEAKEEPER (SELLER) WILL BE APPROPRIATE FOR CUSTOMER'S (BUYER'S) VESSEL. CUSTOMER'S OWN NAVAL ARCHITECT AND BOAT BUILDER MUST USE THEIR INDEPENDENT PROFESSIONAL JUDGEMENTS IN USING OR MODIFYING THESE DRAWINGS TO FIT THE SPECIFIC NEEDS, DESIGN AND LOAD-BEARING REQUIREMENTS OF CUSTOMER'S (BUYER'S) VESSEL.

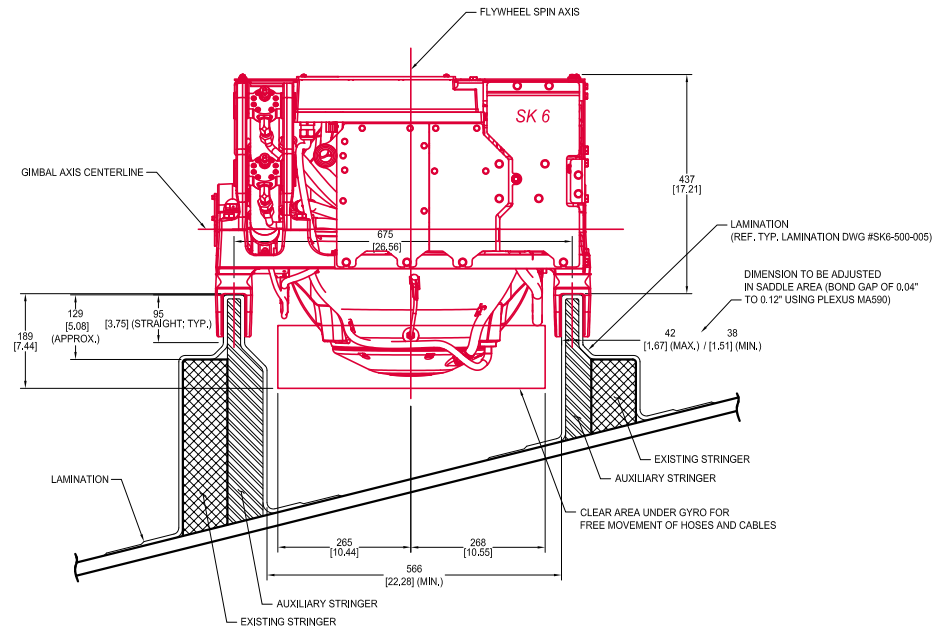
SECTION 2-B SEAKEEPER 6 BOND-IN METHOD LAMINATION FRP REFIT



ELEVATION VIEW 7-C
(LAMINATED FRP REFIT METHOD 2-B)




PLAN VIEW 7-B
(LAMINATED FRP REFIT METHOD 2-B)



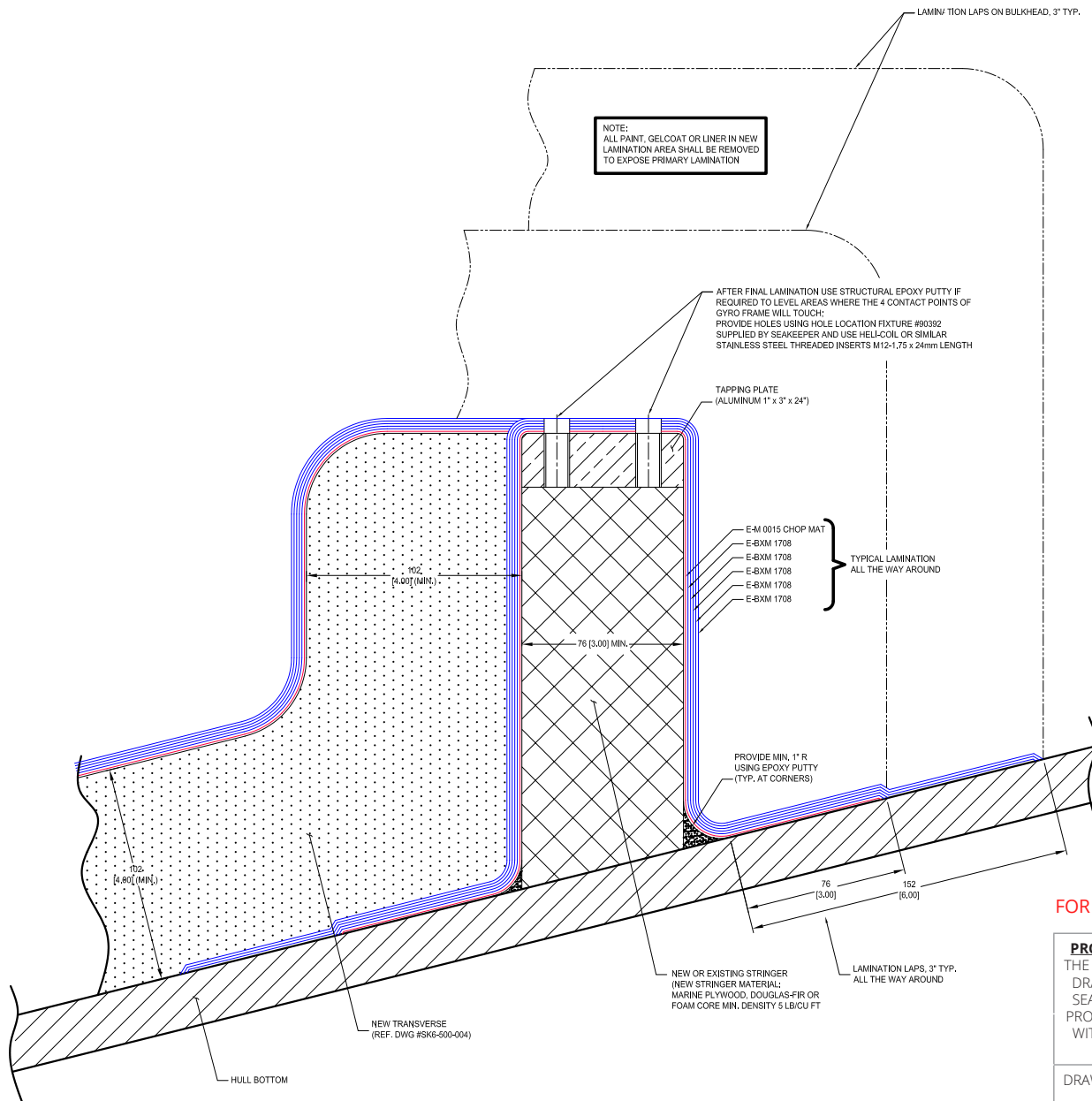
SECTION VIEW 3-C
(LAMINATED FRP REFIT METHOD 2-B)

-NOT FOR DESIGN-
FOR INFORMATION ONLY TO ILLUSTRATE TYPICAL GYRO INSTALLATION

<div>PROPRIETARY AND CONFIDENTIAL</div> <div>THE INFORMATION CONTAINED IN THIS DRAWING IS THE SOLE PROPERTY OF SEAKEEPER INCORPORATED. ANY RE-PRODUCTION IN PART OR AS A WHOLE WITHOUT THE WRITTEN PERMISSION OF SEAKEEPER IS PROHIBITED.</div>		<div><div>Seakeeper Inc. 44425 Pecan Court Suite 151 California, MD 20619</div></div>	
		<div>NAME:</div> <div>PRELIMINARY SEAKEEPER 6 INSTALLATION GUIDE</div>	
<div>DRAWN:</div> <div>RLK</div>	<div>DATE:</div> <div>27MARCH2017</div>	<div>DWG NUMBER</div> <div>90448</div>	<div>REV. NO.</div> <div>1</div>
<div>ENG APPR:</div> <div>JC</div>	<div>DATE:</div> <div>27MARCH2017</div>		
<div>PROD APPR:</div>	<div>DATE:</div>		<div>SHEET NO.</div> <div>10 of 14</div>

SEAKEEPER (SELLER) MAKES NO WARRANTIES, EXPRESS OR IMPLIED, INCLUDING NO WARRANTY OF MERCHANTABILITY OR FITNESS FOR A SPECIFIC PURPOSE THAT THE GENERIC DRAWINGS OF VARIOUS INSTALLATION DESIGNS PROVIDED BY SEAKEEPER (SELLER) WILL BE APPROPRIATE FOR CUSTOMER'S (BUYER'S) VESSEL. CUSTOMER'S OWN NAVAL ARCHITECT AND BOAT BUILDER MUST USE THEIR INDEPENDENT PROFESSIONAL JUDGEMENTS IN USING OR MODIFYING THESE DRAWINGS TO FIT THE SPECIFIC NEEDS, DESIGN AND LOAD-BEARING REQUIREMENTS OF CUSTOMER'S (BUYER'S) VESSEL.

SECTION 5-C SEAKEEPER 6 BOLT-IN METHOD STRINGER LAMINATION, TYP.




1. TYPICAL LAMINATION		
STEP	LAMINA	THICKNESS (IN)
1.01	E-M 0015 CHOP MAT	0.036
1.02	E-BXM 1708	0.048
1.03	E-BXM 1708	0.048
1.04	E-BXM 1708	0.048
1.05	E-BXM 1708	0.048
1.06	E-BXM 1708	0.048
COMPOSITE THICKNESS		0.276

2. OPTIONAL LAMINATION		
STEP	LAMINA	THICKNESS (IN)
2.01	E-M 0015 CHOP MAT	0.036
2.02	E-TLXM 2208	0.056
2.03	E-TLXM 2208	0.056
2.04	E-TLXM 2208	0.056
2.05	E-TLXM 2208	0.056
COMPOSITE THICKNESS		0.260

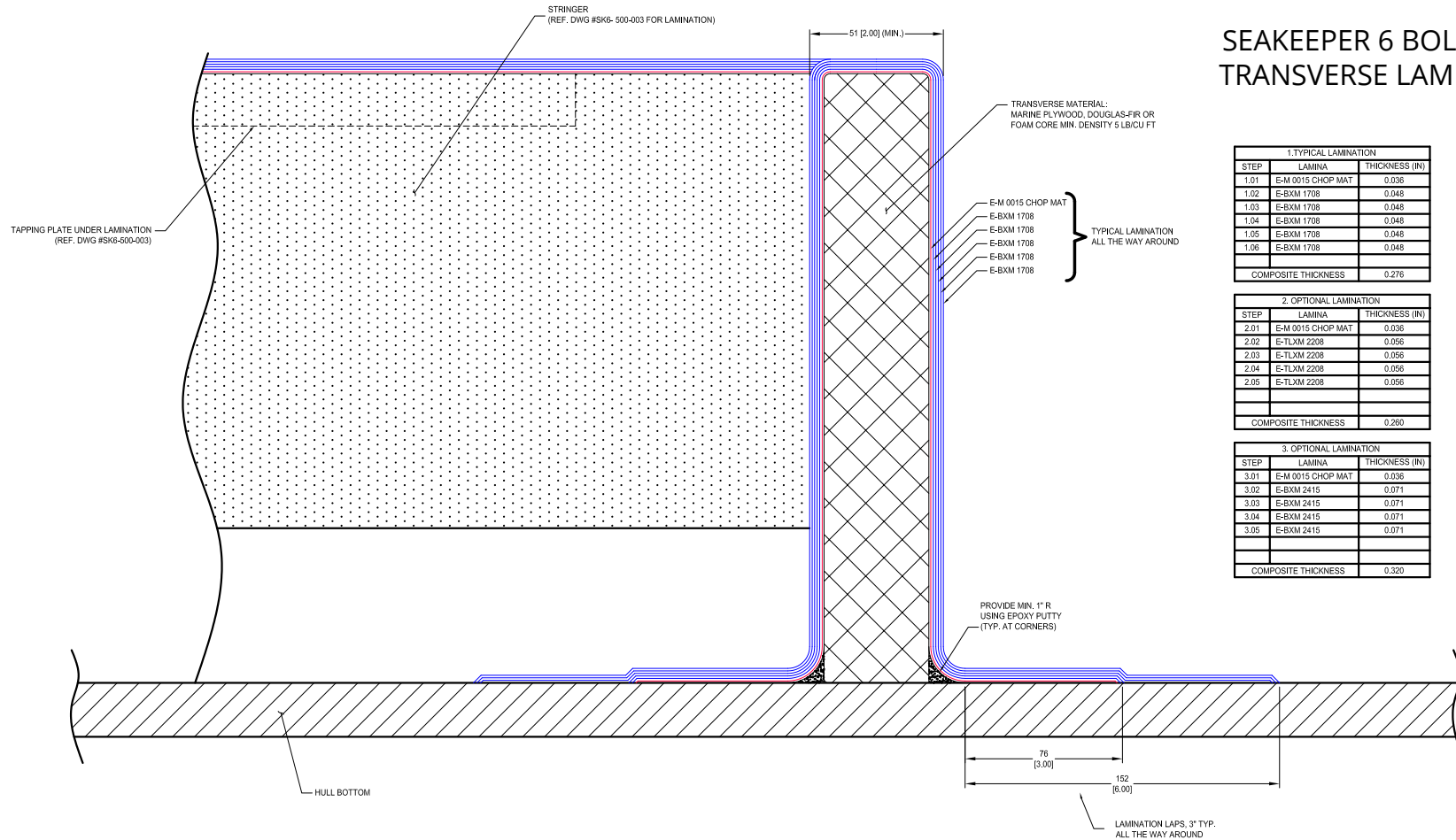
3. OPTIONAL LAMINATION		
STEP	LAMINA	THICKNESS (IN)
3.01	E-M 0015 CHOP MAT	0.036
3.02	E-BXM 2415	0.071
3.03	E-BXM 2415	0.071
3.04	E-BXM 2415	0.071
3.05	E-BXM 2415	0.071
COMPOSITE THICKNESS		0.320

-NOT FOR DESIGN-
FOR INFORMATION ONLY TO ILLUSTRATE TYPICAL GYRO INSTALLATION

PROPRIETARY AND CONFIDENTIAL THE INFORMATION CONTAINED IN THIS DRAWING IS THE SOLE PROPERTY OF SEAKEEPER INCORPORATED. ANY RE- PRODUCTION IN PART OR AS A WHOLE WITHOUT THE WRITTEN PERMISSION OF SEAKEEPER IS PROHIBITED.		 SEAKEEPER		Seakeeper Inc. 44425 Pecan Court Suite 151 California, MD 20619	
DRAWN: RLK		DATE: 27MARCH2017		NAME: PRELIMINARY SEAKEEPER 6 INSTALLATION GUIDE	
ENG APPR: JC		DATE: 27MARCH2017			
PROD APPR:		DATE:			
		DWG NUMBER 90448		REV. NO. 1	SHEET NO. 11 of 14

SEAKEEPER (SELLER) MAKES NO WARRANTIES, EXPRESS OR IMPLIED, INCLUDING NO WARRANTY OF MERCHANTABILITY OR FITNESS FOR A SPECIFIC PURPOSE THAT THE GENERIC DRAWINGS OF VARIOUS INSTALLATION DESIGNS PROVIDED BY SEAKEEPER (SELLER) WILL BE APPROPRIATE FOR CUSTOMER'S (BUYER'S) VESSEL. CUSTOMER'S OWN NAVAL ARCHITECT AND BOAT BUILDER MUST USE THEIR INDEPENDENT PROFESSIONAL JUDGEMENTS IN USING OR MODIFYING THESE DRAWINGS TO FIT THE SPECIFIC NEEDS, DESIGN AND LOAD-BEARING REQUIREMENTS OF CUSTOMER'S (BUYER'S) VESSEL.

SECTION 5-C SEAKEEPER 6 BOLT-IN METHOD TRANSVERSE LAMINATION, TYP.




1. TYPICAL LAMINATION		
STEP	LAMINA	THICKNESS (IN)
1.01	E-M 0015 CHOP MAT	0.036
1.02	E-BXM 1708	0.048
1.03	E-BXM 1708	0.048
1.04	E-BXM 1708	0.048
1.05	E-BXM 1708	0.048
1.06	E-BXM 1708	0.048
COMPOSITE THICKNESS		0.276

2. OPTIONAL LAMINATION		
STEP	LAMINA	THICKNESS (IN)
2.01	E-M 0015 CHOP MAT	0.036
2.02	E-TLXM 2208	0.056
2.03	E-TLXM 2208	0.056
2.04	E-TLXM 2208	0.056
2.05	E-TLXM 2208	0.056
COMPOSITE THICKNESS		0.280

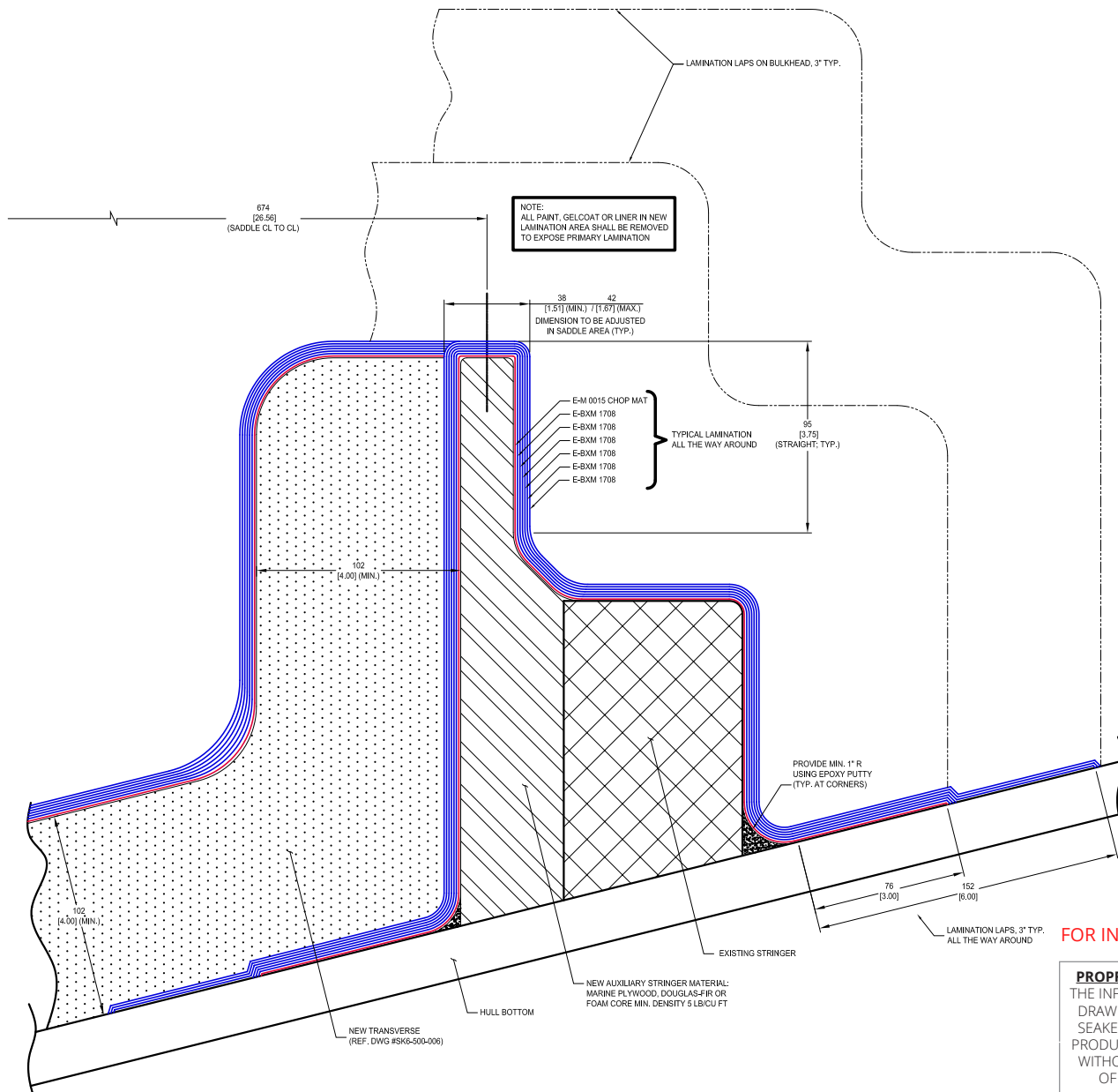
3. OPTIONAL LAMINATION		
STEP	LAMINA	THICKNESS (IN)
3.01	E-M 0015 CHOP MAT	0.036
3.02	E-BXM 2415	0.071
3.03	E-BXM 2415	0.071
3.04	E-BXM 2415	0.071
3.05	E-BXM 2415	0.071
COMPOSITE THICKNESS		0.320

-NOT FOR DESIGN-
FOR INFORMATION ONLY TO ILLUSTRATE TYPICAL GYRO INSTALLATION

<p>PROPRIETARY AND CONFIDENTIAL</p> <p>THE INFORMATION CONTAINED IN THIS DRAWING IS THE SOLE PROPERTY OF SEAKEEPER INCORPORATED. ANY RE-PRODUCTION IN PART OR AS A WHOLE WITHOUT THE WRITTEN PERMISSION OF SEAKEEPER IS PROHIBITED.</p>		<div><p>SEAKEEPER</p></div> <div>Seakeeper Inc. 44425 Pecan Court Suite 151 California, MD 20619</div>	
		NAME: <div>PRELIMINARY SEAKEEPER 6 INSTALLATION GUIDE</div>	
DRAWN: RLK	DATE: 27MARCH2017	DWG NUMBER	REV. NO.
ENG APPR: JC	DATE: 27MARCH2017	90448	1
PROD APPR:	DATE:		12 of 14

SEAKEEPER (SELLER) MAKES NO WARRANTIES, EXPRESS OR IMPLIED, INCLUDING NO WARRANTY OF MERCHANTABILITY OR FITNESS FOR A SPECIFIC PURPOSE THAT THE GENERIC DRAWINGS OF VARIOUS INSTALLATION DESIGNS PROVIDED BY SEAKEEPER (SELLER) WILL BE APPROPRIATE FOR CUSTOMERS' (BUYERS) VESSEL. CUSTOMER'S OWN NAVAL ARCHITECT AND BOAT BUILDER MUST USE THEIR INDEPENDENT PROFESSIONAL JUDGEMENTS IN USING OR MODIFYING THESE DRAWINGS TO FIT THE SPECIFIC NEEDS, DESIGN AND LOAD-BEARING REQUIREMENTS OF CUSTOMER'S (BUYERS) VESSEL.

SECTION 5-C SEAKEEPER 6 BOND-IN METHOD STRINGER LAMINATION, TYP.




1. TYPICAL LAMINATION		
STEP	LAMINA	THICKNESS (IN)
1.01	E-M 0015 CHOP MAT	0.036
1.02	E-BXM 1708	0.048
1.03	E-BXM 1708	0.048
1.04	E-BXM 1708	0.048
1.05	E-BXM 1708	0.048
1.06	E-BXM 1708	0.048
1.07	E-BXM 1708	0.048
COMPOSITE THICKNESS		0.324

2. OPTIONAL LAMINATION		
STEP	LAMINA	THICKNESS (IN)
2.01	E-M 0015 CHOP MAT	0.036
2.02	E-TLXM 2208	0.056
2.03	E-TLXM 2208	0.056
2.04	E-TLXM 2208	0.056
2.05	E-TLXM 2208	0.056
2.06	E-TLXM 2208	0.056
COMPOSITE THICKNESS		0.316

3. OPTIONAL LAMINATION		
STEP	LAMINA	THICKNESS (IN)
3.01	E-M 0015 CHOP MAT	0.036
3.02	E-LTM 3610	0.076
3.03	E-LTM 1603	0.031
3.04	E-LTM 3610	0.076
3.05	E-LTM 1603	0.031
3.06	E-LTM 3610	0.076
COMPOSITE THICKNESS		0.326

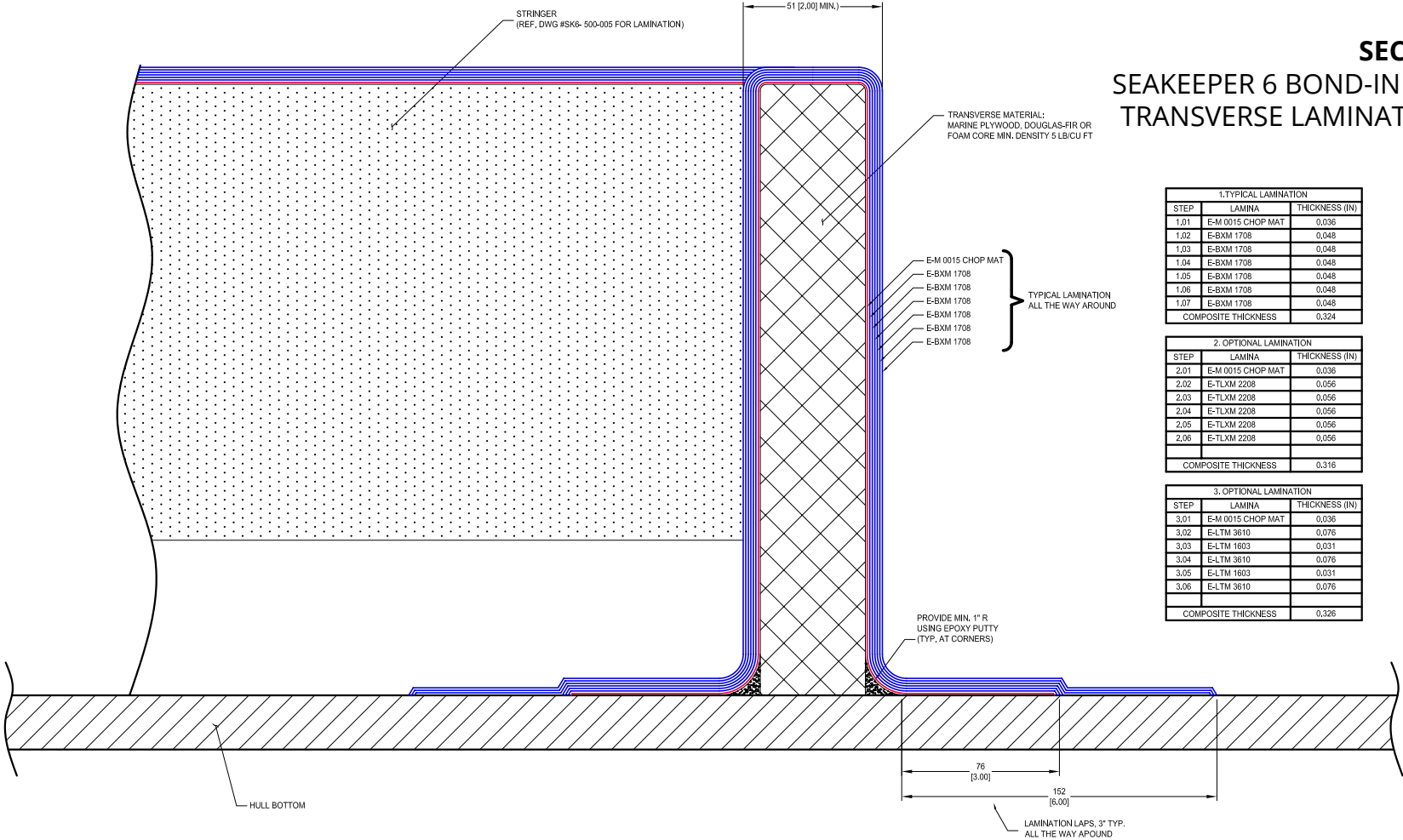
-NOT FOR DESIGN-
FOR INFORMATION ONLY TO ILLUSTRATE TYPICAL GYRO INSTALLATION

PROPRIETARY AND CONFIDENTIAL
THE INFORMATION CONTAINED IN THIS DRAWING IS THE SOLE PROPERTY OF SEAKEEPER INCORPORATED. ANY REPRODUCTION IN PART OR AS A WHOLE WITHOUT THE WRITTEN PERMISSION OF SEAKEEPER IS PROHIBITED.

		Seakeeper Inc. 44425 Pecan Court Suite 151 California, MD 20619		
NAME:		PRELIMINARY SEAKEEPER 6 INSTALLATION GUIDE		
DRAWN: RLK	DATE: 27MARCH2017	DWG NUMBER 90448	REV. NO. 1	SHEET NO. 13 of 14
ENG APPR: JC	DATE: 27MARCH2017			
PROD APPR:	DATE:			

SEAKEEPER (SELLER) MAKES NO WARRANTIES, EXPRESS OR IMPLIED, INCLUDING NO WARRANTY OF MERCHANTABILITY OR FITNESS FOR A SPECIFIC PURPOSE THAT THE GENERIC DRAWINGS OF VARIOUS INSTALLATION DESIGNS PROVIDED BY SEAKEEPER (SELLER) WILL BE APPROPRIATE FOR CUSTOMER'S (BUYER'S) VESSEL. CUSTOMER'S OWN NAVAL ARCHITECT AND BOAT BUILDER MUST USE THEIR INDEPENDENT PROFESSIONAL JUDGEMENTS IN USING OR MODIFYING THESE DRAWINGS TO FIT THE SPECIFIC NEEDS, DESIGN AND LOAD-BEARING REQUIREMENTS OF CUSTOMER'S (BUYER'S) VESSEL.

SECTION 5-C
SEAKEEPER 6 BOND-IN METHOD
TRANSVERSE LAMINATION, TYP.



1.TYPICAL LAMINATION		
STEP	LAMINA	THICKNESS (IN)
1.01	E-M 0015 CHOP MAT	0.036
1.02	E-BXM 1708	0.048
1.03	E-BXM 1708	0.048
1.04	E-BXM 1708	0.048
1.05	E-BXM 1708	0.048
1.06	E-BXM 1708	0.048
1.07	E-BXM 1708	0.048
COMPOSITE THICKNESS		0.324


2. OPTIONAL LAMINATION		
STEP	LAMINA	THICKNESS (IN)
2.01	E-M 0015 CHOP MAT	0.036
2.02	E-TLXM 2208	0.056
2.03	E-TLXM 2208	0.056
2.04	E-TLXM 2208	0.056
2.05	E-TLXM 2208	0.056
2.06	E-TLXM 2208	0.056
COMPOSITE THICKNESS		0.316

3. OPTIONAL LAMINATION		
STEP	LAMINA	THICKNESS (IN)
3.01	E-M 0015 CHOP MAT	0.036
3.02	E-LTM 3610	0.076
3.03	E-LTM 1603	0.031
3.04	E-LTM 3610	0.076
3.05	E-LTM 1603	0.031
3.06	E-LTM 3610	0.076
COMPOSITE THICKNESS		0.326

-NOT FOR DESIGN-
FOR INFORMATION ONLY TO ILLUSTRATE TYPICAL GYRO INSTALLATION

PROPRIETARY AND CONFIDENTIAL

THE INFORMATION CONTAINED IN THIS DRAWING IS THE SOLE PROPERTY OF SEAKEEPER INCORPORATED. ANY RE-PRODUCTION IN PART OR AS A WHOLE WITHOUT THE WRITTEN PERMISSION OF SEAKEEPER IS PROHIBITED.



Seakeeper Inc.
44425 Pecan Court
Suite 151
California, MD 20619

NAME:
PRELIMINARY
SEAKEEPER 6
INSTALLATION GUIDE

DRAWN: RLK	DATE: 27MARCH2017	DWG NUMBER 90448	REV. NO. 1	SHEET NO. 14 of 14
ENG APPR: JC	DATE: 27MARCH2017			
PROD APPR:	DATE:			

SEAKEEPER (SELLER) MAKES NO WARRANTIES, EXPRESS OR IMPLIED, INCLUDING NO WARRANTY OF MERCHANTABILITY OR FITNESS FOR A SPECIFIC PURPOSE THAT THE GENERIC DRAWINGS OF VARIOUS INSTALLATION DESIGNS PROVIDED BY SEAKEEPER (SELLER) WILL BE APPROPRIATE FOR CUSTOMER'S (BUYER'S) VESSEL. CUSTOMER'S OWN NAVAL ARCHITECT AND BOAT BUILDER MUST USE THEIR INDEPENDENT PROFESSIONAL JUDGEMENTS IN USING OR MODIFYING THESE DRAWINGS TO FIT THE SPECIFIC NEEDS, DESIGN AND LOAD-BEARING REQUIREMENTS OF CUSTOMER'S (BUYER'S) VESSEL.