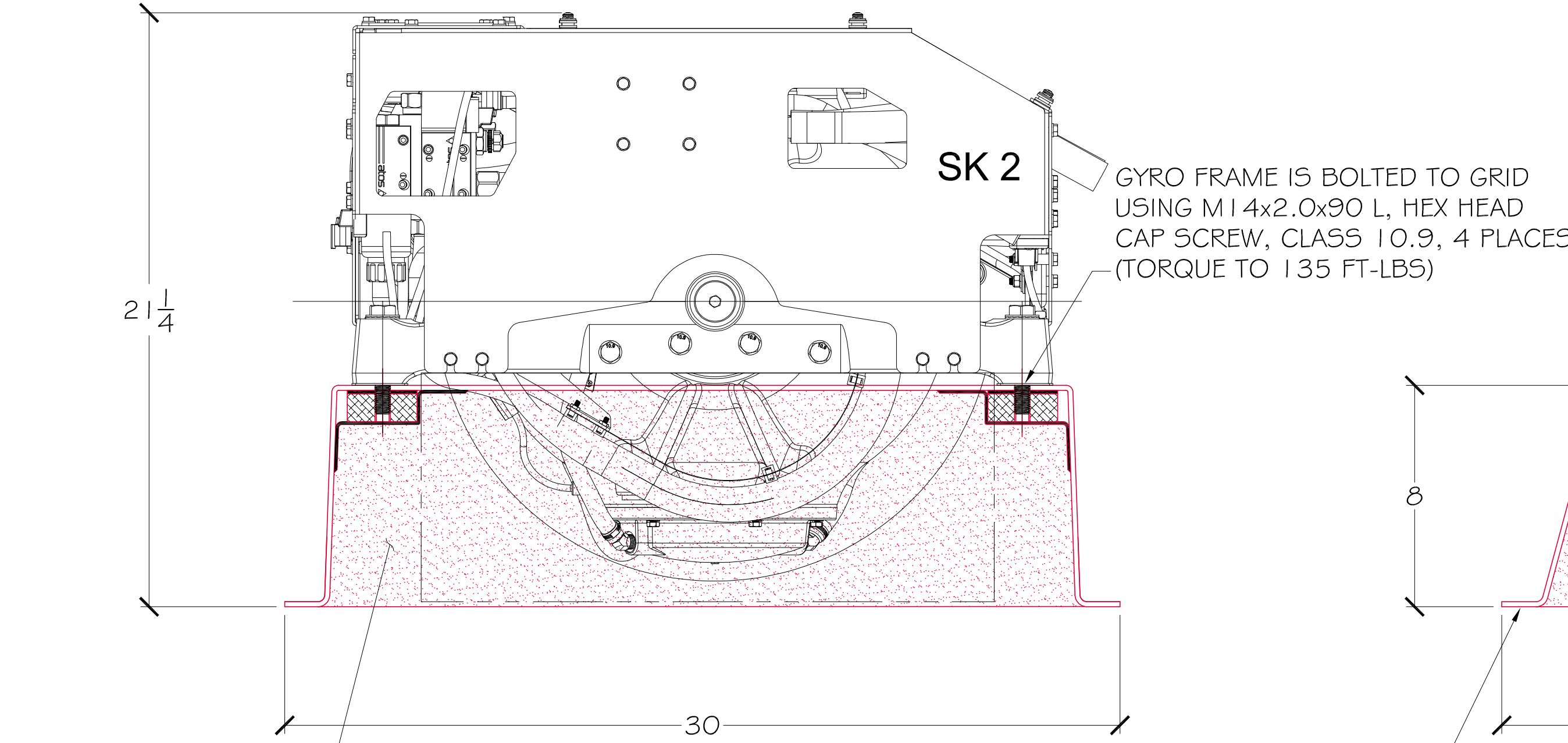
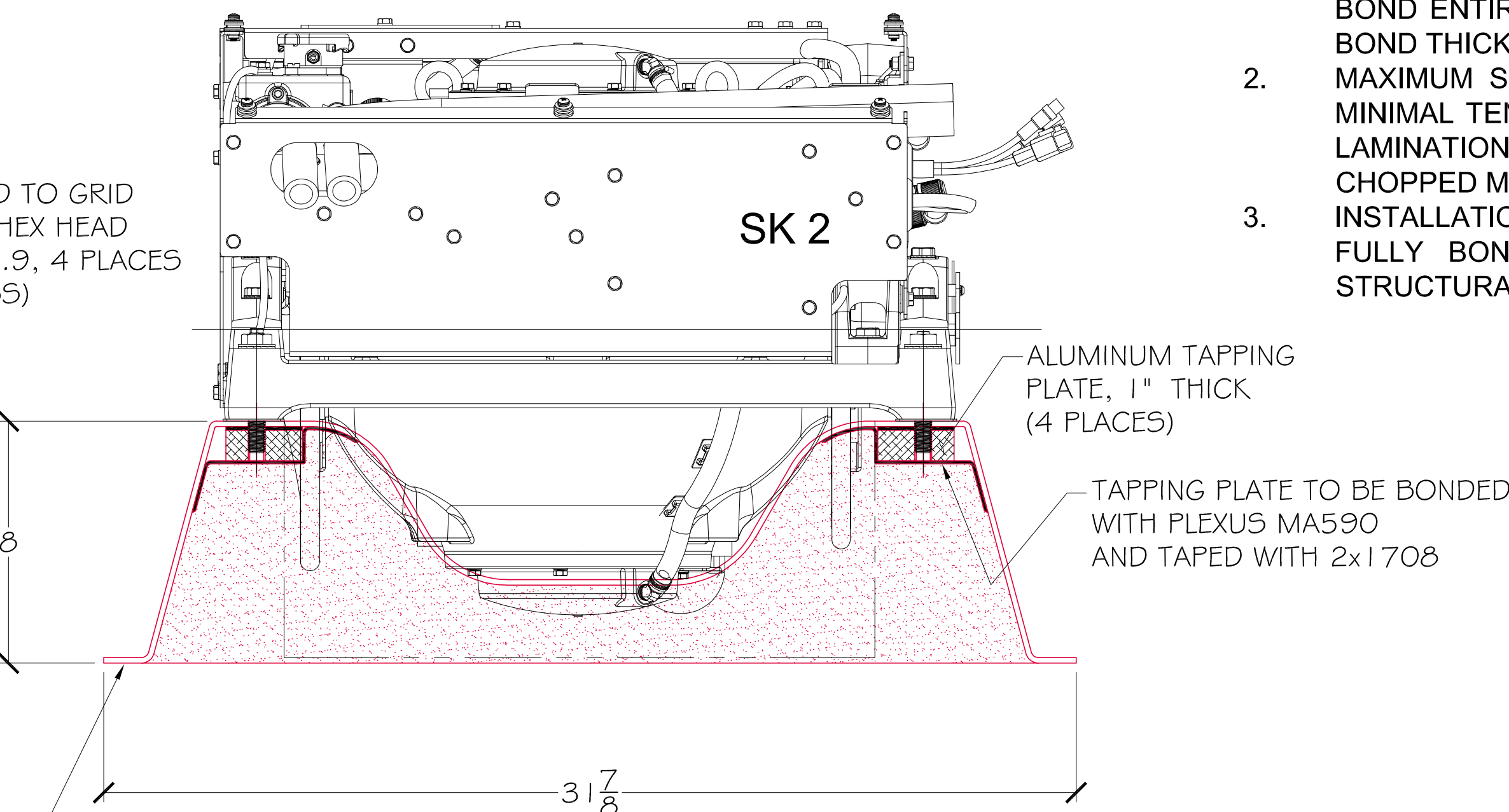


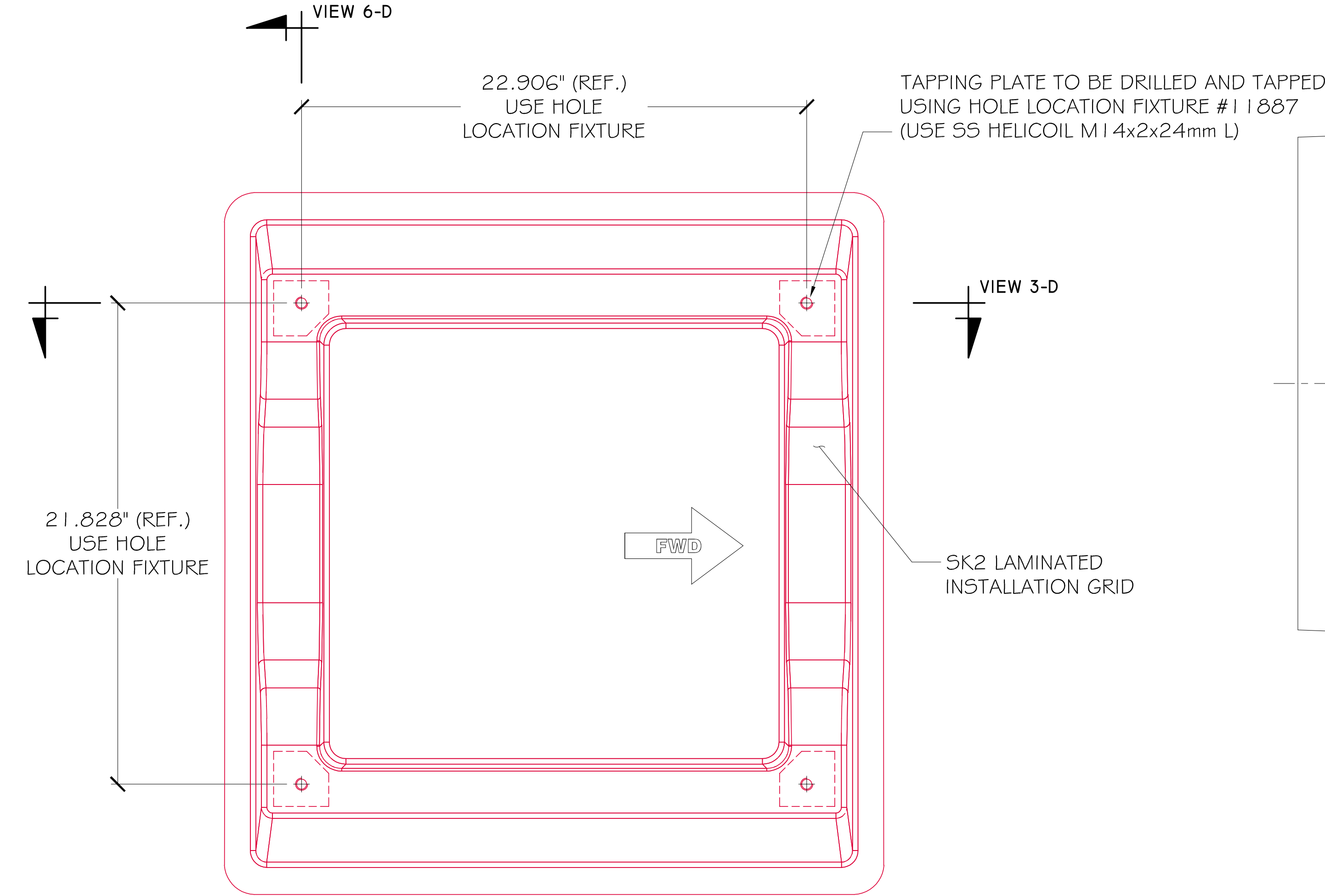
- GENERAL NOTES:
1. SEAKEEPER FOUNDATION TO BE BONDED TO DECK SOLE WITH PLEXUS MA590 ADHESIVE (TENSILE STRENGTH OF 2000 PSI). ANY PAINT OR GELCOAT PRESENT IN BOND AREA SHALL BE SANDED. BOND ENTIRE GRID BOTTOM SURFACE ENSURING 0.04" TO 0.12" OF BOND THICKNESS.
  2. MAXIMUM SPAN IN DECK BASED IN DECK SOLE LAMINATION WITH MINIMAL TENSILE ULTIMATE STRESS OF 3400 PSI, EQUIVALENT TO A LAMINATION SIMILAR TO 1.5 OZ CHOPPED MAT / E-LTM 1208 / 1.5 OZ CHOPPED MAT / DIVINYCELL CORE H60 3/4" / E-BXM 1708.
  3. INSTALLATION CONDITION REQUESTS STRINGERS AND BULKHEAD FULLY BONDED TO DECK USING POLY-BOND B39 OR SIMILAR STRUCTURAL ADHESIVE (MIN. TENSILE STRENGTH OF 1000 PSI).



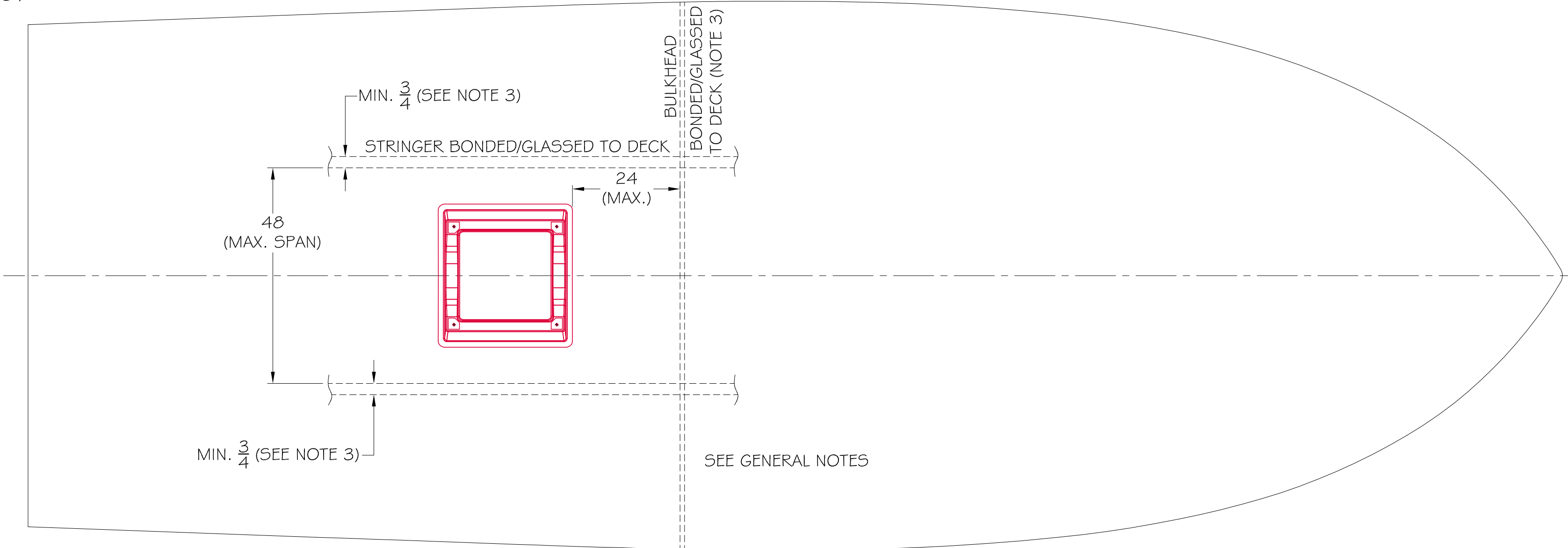
**SIDE VIEW 3-D**  
(SCALE 3" = 1'-0")  
(TO BE BONDED ON DECK / SEE NOTE 1)



**FRONT VIEW 6-D**  
(SCALE 3" = 1'-0")




**PLAN VIEW 6-D**  
(SCALE 3" = 1'-0")



**DECK INSTALLATION MINIMUM CONDITION (REFIT)**  
(NOT TO SCALE)

- TYPICAL INSTALLATION METHOD SHOWN.  
- NO GUARANTEE IS EXPRESSED OR IMPLIED.

PREPARED FOR		VESSEL / PROJECT		THIS COPY AND ANY COPY THEREOF ARE STRICTLY CONFIDENTIAL AND REMAIN THE SOLE AND EXCLUSIVE INTELLECTUAL PROPERTY OF OCEAN5 INC. ANY CHANGES, PUBLICATION, OR UNAUTHORIZED USE IS PROHIBITED UNLESS APPROVED IN WRITING BY OCEAN5 INC.		SIZE		CUSTOMER	
SEAKEEPER		SEAKEEPER 2 GYRO				D		SEAKEEPER INC.	
 <div>OCEAN5 NAVAL ARCHITECTS 360 NW ALICE AVE STUART, FL 34994 PH: (772) 692-8551 FAX: (772) 692-8552 EMAIL: INFO@OCEAN5.COM</div>		CUSTOMER APPROVED BY		DATE		DESCRIPTION			
		CLASS APPROVED BY		DATE		SK2 DECK MOUNTED (REFIT)			
		SOLICITATION NUMBER		SCALE 3" = 1'-0" MASS (WEIGHT)		LBS		DATE 03/26/2018	
				PREPARED R/LK		DATE 03/26/2018			
				CHECKED JCT		DATE 03/26/2018		ESWBS 500	
				APPROVED		DATE		DWG NO. SK2-500-050	
								REV (-)	







