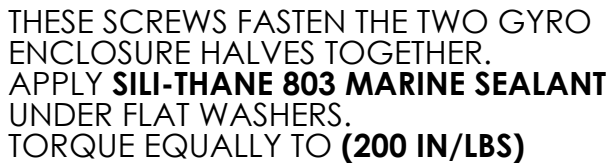



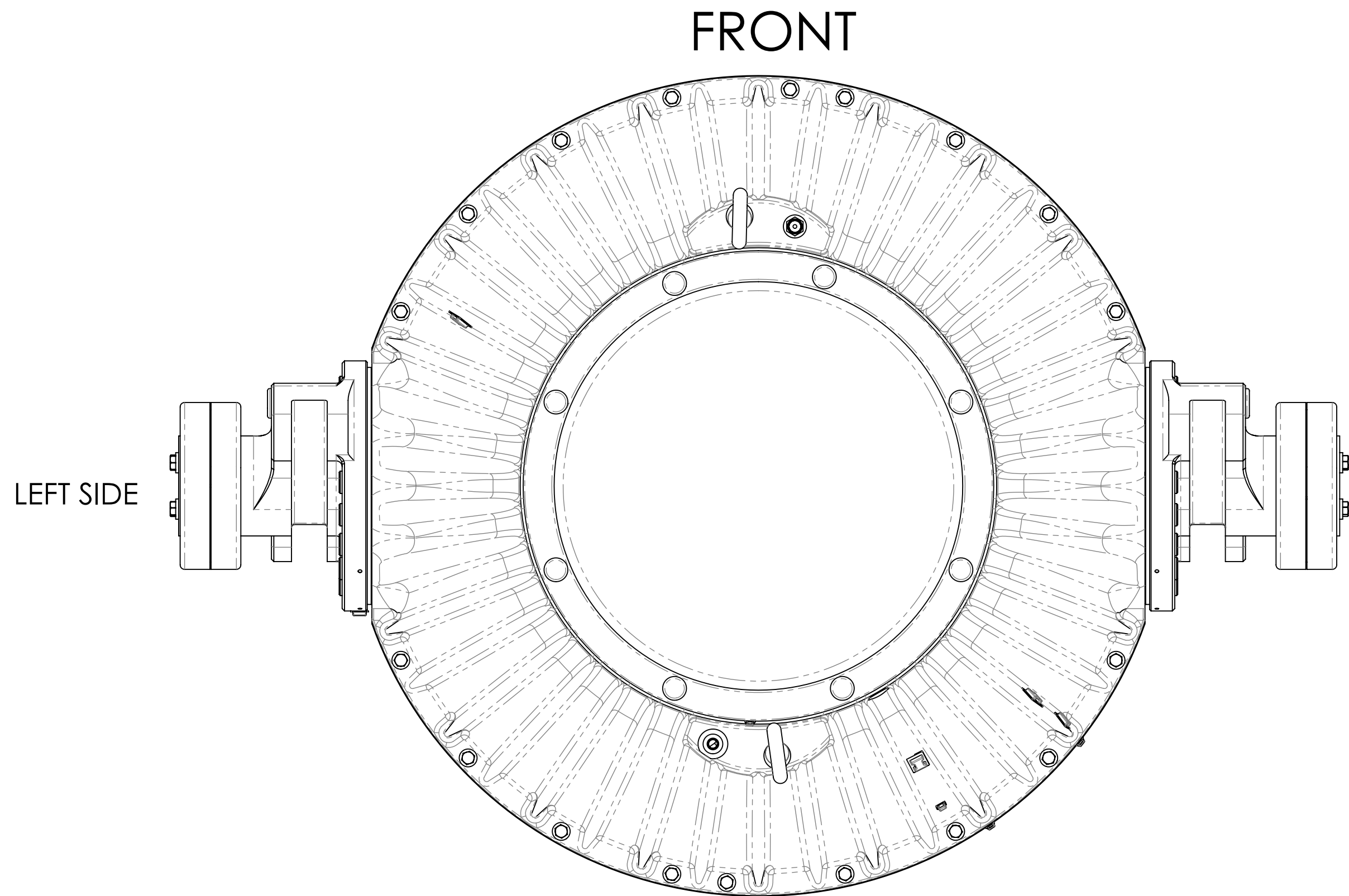
(2) BE SURE TO CLEAN ALL COMPONENTS OF METAL CHIPS AND OIL OR GREASE, CLEAN AND BLOW OUT ALL THREADED HOLES.



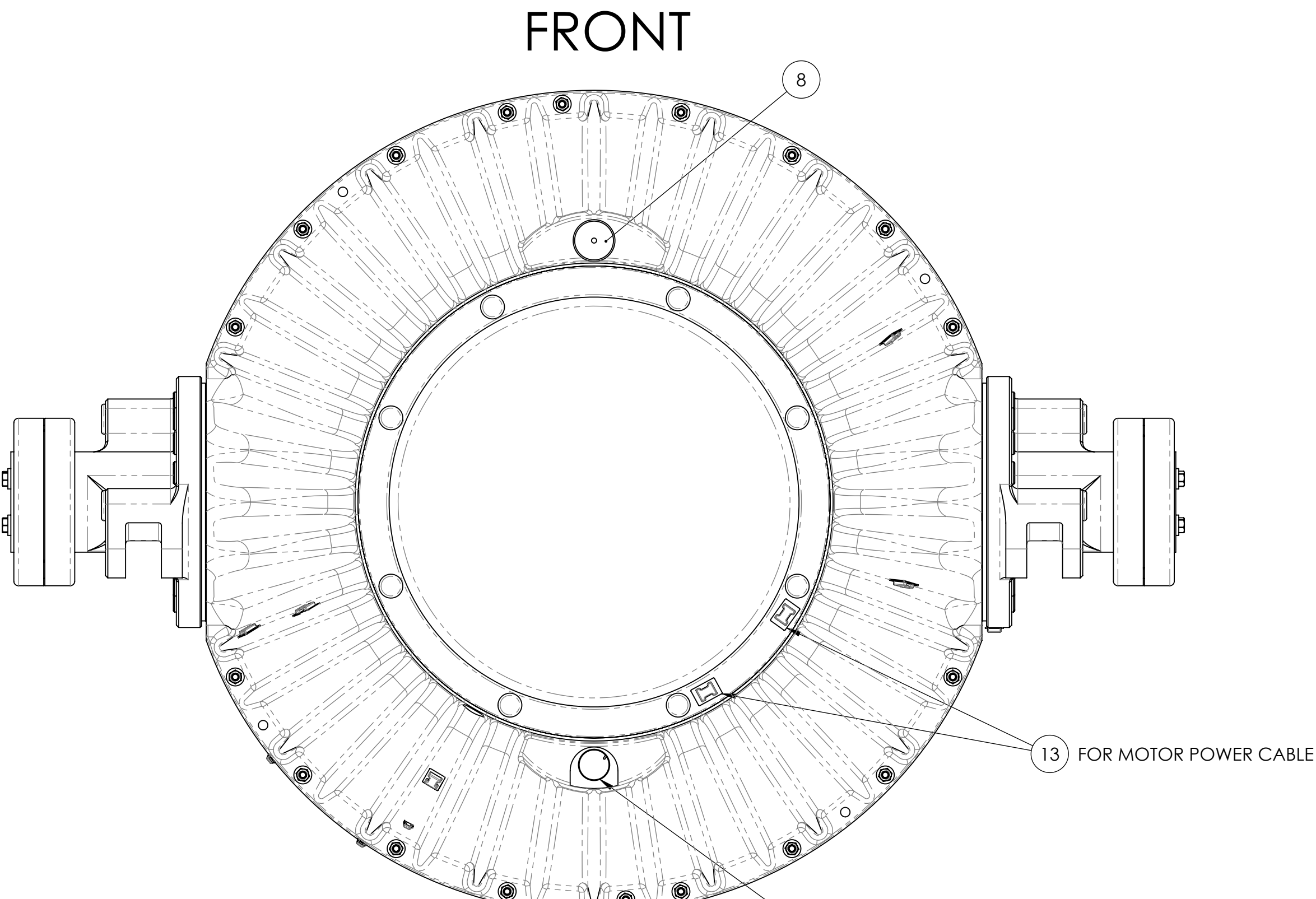
NOTE:
APPLY THIN FILM OF
VACUUM GREASE TO ALL
INTERNAL O-RINGS.

44	70054	THREADLOCKER, LOCTITE #243, BLUE	---	AR
43	60578	SCREW, SOCKET HD CAP WITH O-RING, .62-18 X 1.75 FULL TD	ALLOY STEEL, ALUM ZINC PLTD	28
42	60495	STANDOFF, .38 HEX, 10-32 MALE X 10-32 FEMALE X 1.25 LG	18-8SS	3
41	60494	SCREW, HEX HD FLANGE, 10-32 X .375	GRD 5 STL	3
40	60491	HEICO-LOCK WASHER, .313 SCREW SIZE	ZINC PLT STL	40
39	60449	HEX HD CAP SCREW, .31-18 X 2" LG	316 SS	18
38	60275	EYEBOLT, M14 X 2 X 28 LNG	ALLOY STEEL	2
37	60274	SCREW, SOCKET HD CAP .25-28 X 2.25 FULL TD	ALLOY STEEL	16
36	60273	SCREW, SOCKET HD CAP .31-24 X 4 PART TD	ALLOY STEEL	20
35	60272	SCREW, SOCKET HD CAP .31-24 X 1.75 FULL TD	ALLOY STEEL	16
34	60243	NUT, NYLOCK HEX .31-18	316SS	18
33	60133	WASHER, SPRING LOCK, HI-COLLAR, 5/16	ALLOY STEEL	16
32	60131	SCREW, SOCKET HD CAP .31-24 X 1 FULL TD	ALLOY STEEL	20
31	60069	NUT, NYLOCK HEX, 10-24	18-8 SS	2
30	60020	WASHER, SPRING LOCK, HI-COLLAR, 1/4	STEEL	16
29	60003	WASHER, FLAT TYPE B NARROW 0.31	316 SS	52
28	40574	FOAM DAMPENER STRIP, 1" X 1/2" X 16" LG	OPEN CELL URETHANE	2
27	40523	RUBBER BUMPER, 1" DIA X .50 HIGH, 10-24 MALE STUD	RUBBER, BLACK	2
26	40518	DESICCANT, 10G PACKET	TYYEK	14
25	40516	O-RING, SIZE 025 .070 X 1.176 ID	75A VITON, BROWN	2
24	40352	SEAKEEPER 35, SEAL, WATER JACKET, .203 SQUARE X 19.350 INCH ID	VITON 75	2
23	40351	BLACK PLASTIC CAP PLUG, 1 INCH	PLASTIC	16
22	40348	O-RING, .139 DIA X 1.6.955 DIA ID	VITON 75	4
21	40347	SEAKEEPER 35, LOWER BEARING WAVE SPRING	CARBON STEEL	1
20	40346	SEAKEEPER 35, UPPER BEARING WAVE SPRING	CARBON STEEL	1
19	40250	SILI-THANE 803 MARINE SEALANT	POLYURETHANE	AR
18	40233	BLACK PLASTIC PLUG CAP	PLASTIC	4
17	40189	O-RING, .139 DIA X 1.5.955 ID	VITON 75	2
16	40162	O-RING, .210 x 30.760"	VITON 75	1
15	40161	O-RING, .210 x 29.640"	VITON 75	1
14	40004	VALVE, VACUUM PORT	302SS	1
13	30016	LARGE CLICK BOND WIRE TIE ANCHOR	COMPOSITE	11
12	30015	SMALL CLICK BOND WIRE TIE ANCHOR	COMPOSITE	5
11	11733	SEAKEEPER 35 DESICCANT CONTAINMENT GUARD	ALUM 5052	1
10	11727	SEAKEEPER 35, LOWER BEARING EXTERIOR RETAINER	1018 STEEL	1
9	11724	SEAKEEPER 35, UPPER BEARING EXTERIOR RETAINER	1018 STEEL	1
8	11714	DESICCANT PORT PLUG	6061 ALUM.	1
7	11291	SEAKEEPER 35, LOWER FIXED COOLING COLLAR, FINISH MACHINED	A319F ALLOY ALUMINUM	1
6	11290	SEAKEEPER 35, UPPER FIXED COOLING COLLAR, FINISH MACHINED	A319F ALLOY ALUMINUM	1
5	11266	SEAKEEPER 35, LEFT SIDE GIMBAL SHAFT ASSEMBLY	SEE BOM	1
4	11265	SEAKEEPER 35, RIGHT SIDE GIMBAL SHAFT ASSEMBLY	SEE BOM	1
3	10881	SEAKEEPER 35, COVER	6061 ALUMINUM	2
2	10880	SEAKEEPER 35, WATER JACKET	6061 ALUMINUM	2
1	10879	SEAKEEPER 35, ENCLOSURE	A356-T6 ALUM	1
ITEM NO.	PART NO.	DESCRIPTION	MATERIAL	QTY.

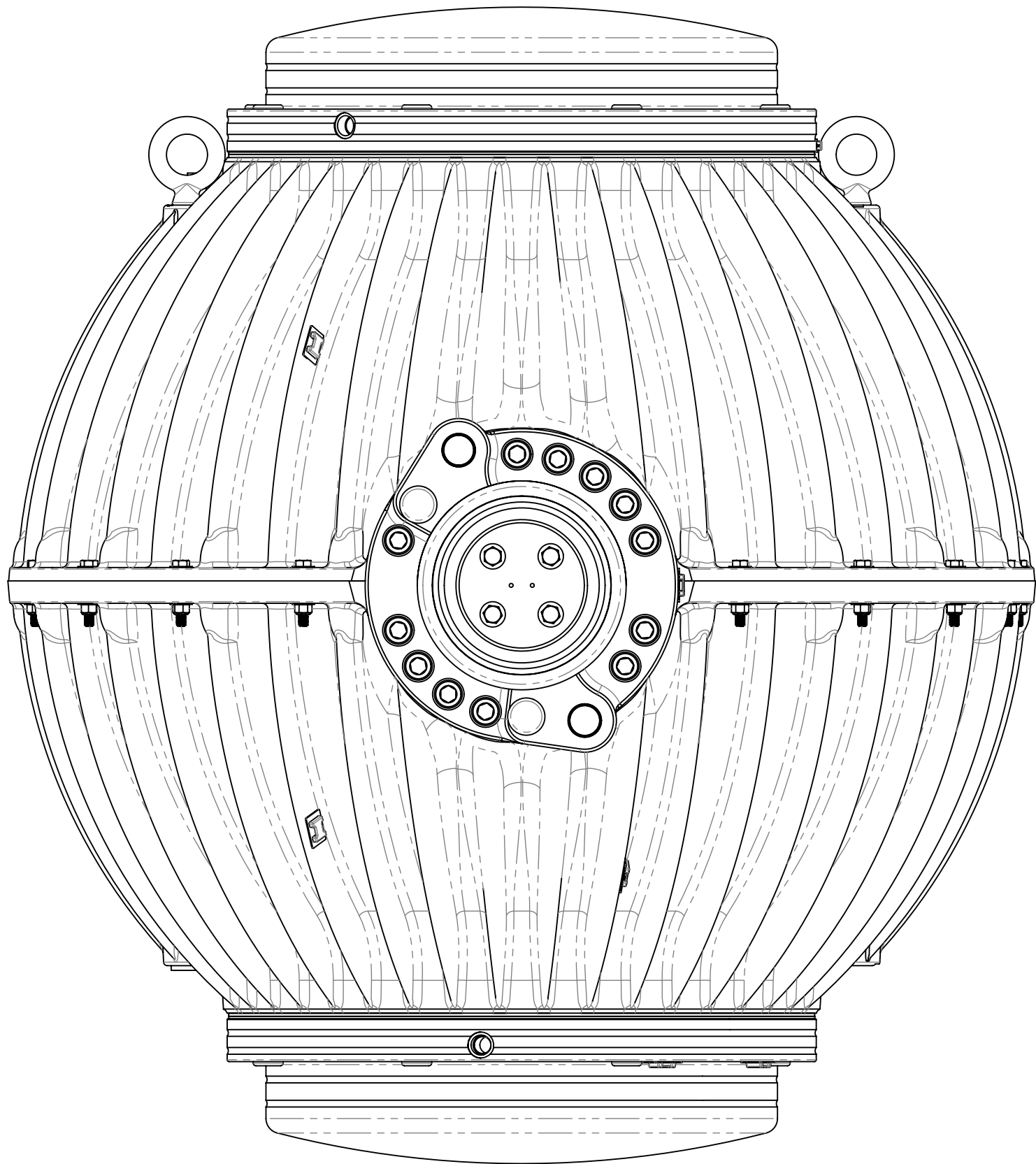
		<u>PROPRIETARY AND CONFIDENTIAL</u>		 SEAKEEPER® SeaKeeper Inc. 44425 Pecan Court, Suite 151 California, MD 20619	
		THE INFORMATION CONTAINED IN THIS DRAWING IS THE SOLE PROPERTY OF SEAKEEPER INCORPORATED. ANY REPRODUCTION IN PART OR AS A WHOLE WITHOUT THE WRITTEN PERMISSION OF SEAKEEPER IS PROHIBITED.		DRAWING: SEAKEEPER 35 ENCLOSURE SUBSYSTEM, SERVICE REFERENCE	
WEIGHT - LBS : 828				DWG NUMBER 11127-SP	
MATERIAL: SEE BOM		DRAWN: PRA ENG APPR: BRD PROD APPR:		DATE: 29 JUL 2014 DATE: 29 JUL 2014 DATE:	
				REV. NO. SHEET NO. 6 1 OF 3	



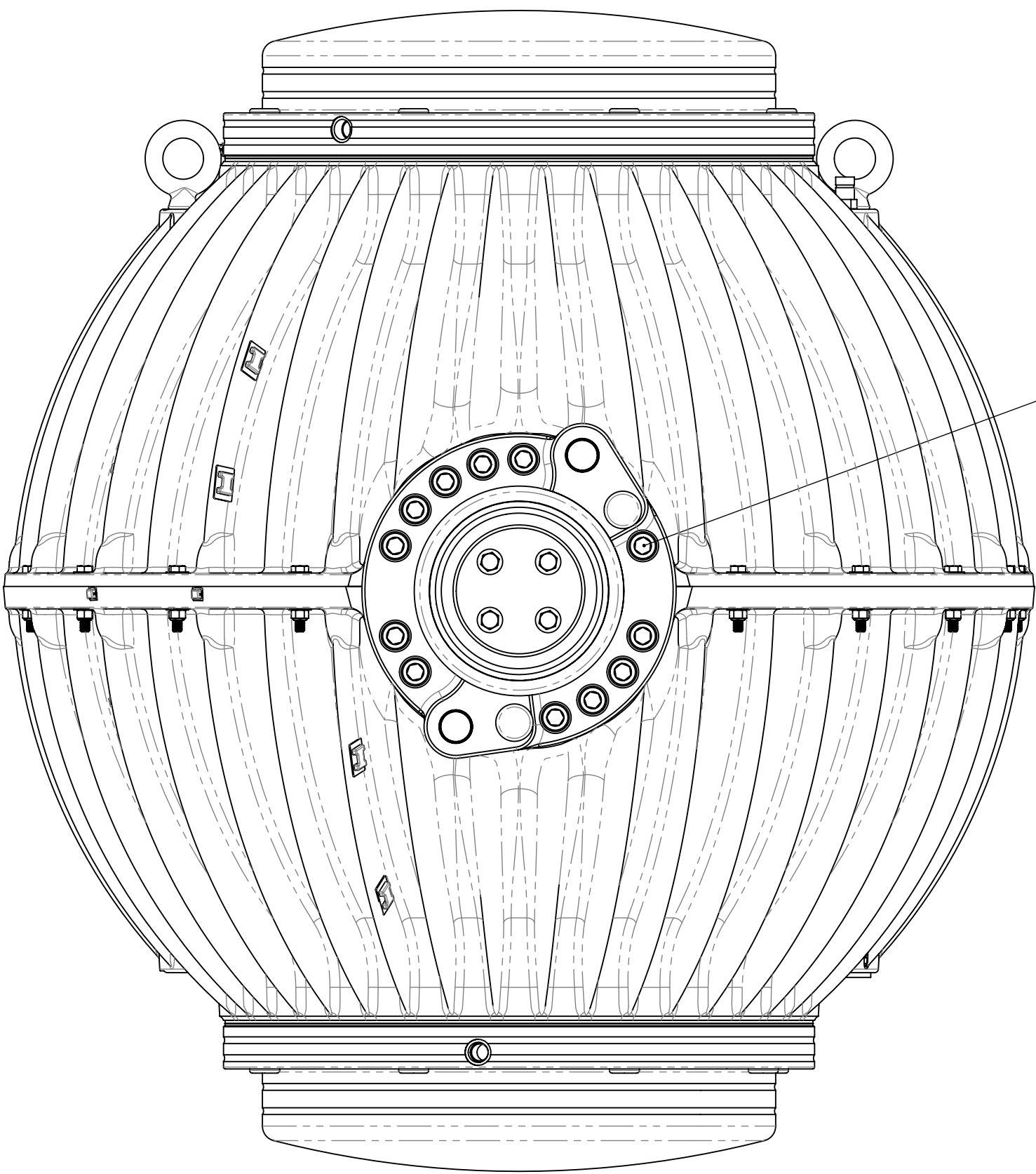
TOP VIEW OF ENCLOSURE



BOTTOM VIEW OF ENCLOSURE

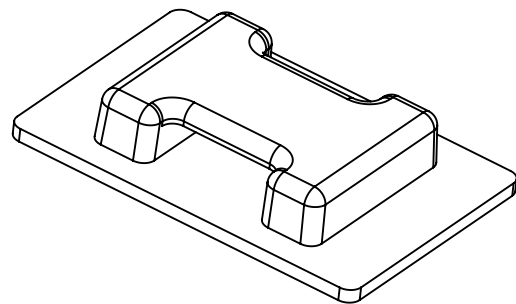


LEFT SIDE

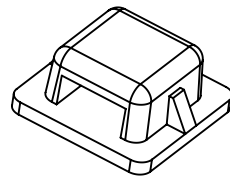


RIGHT SIDE

THIS SHEET PROVIDES LOCATIONS
FOR CLICK BOND WIRE TIE ANCHORS

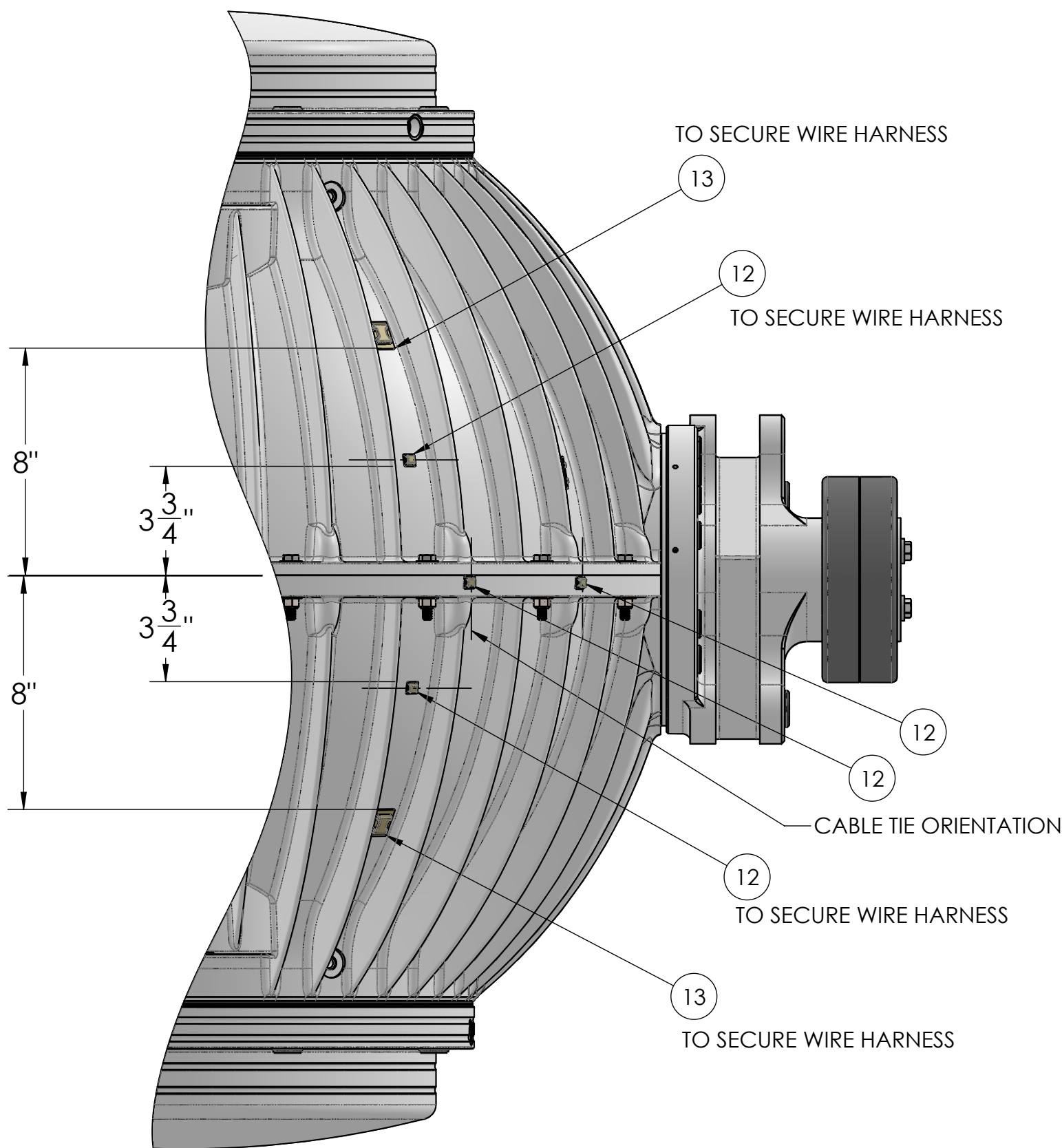


ITEM 13 30016, CLICK BOND WIRE-TIE MOUNT, LARGE

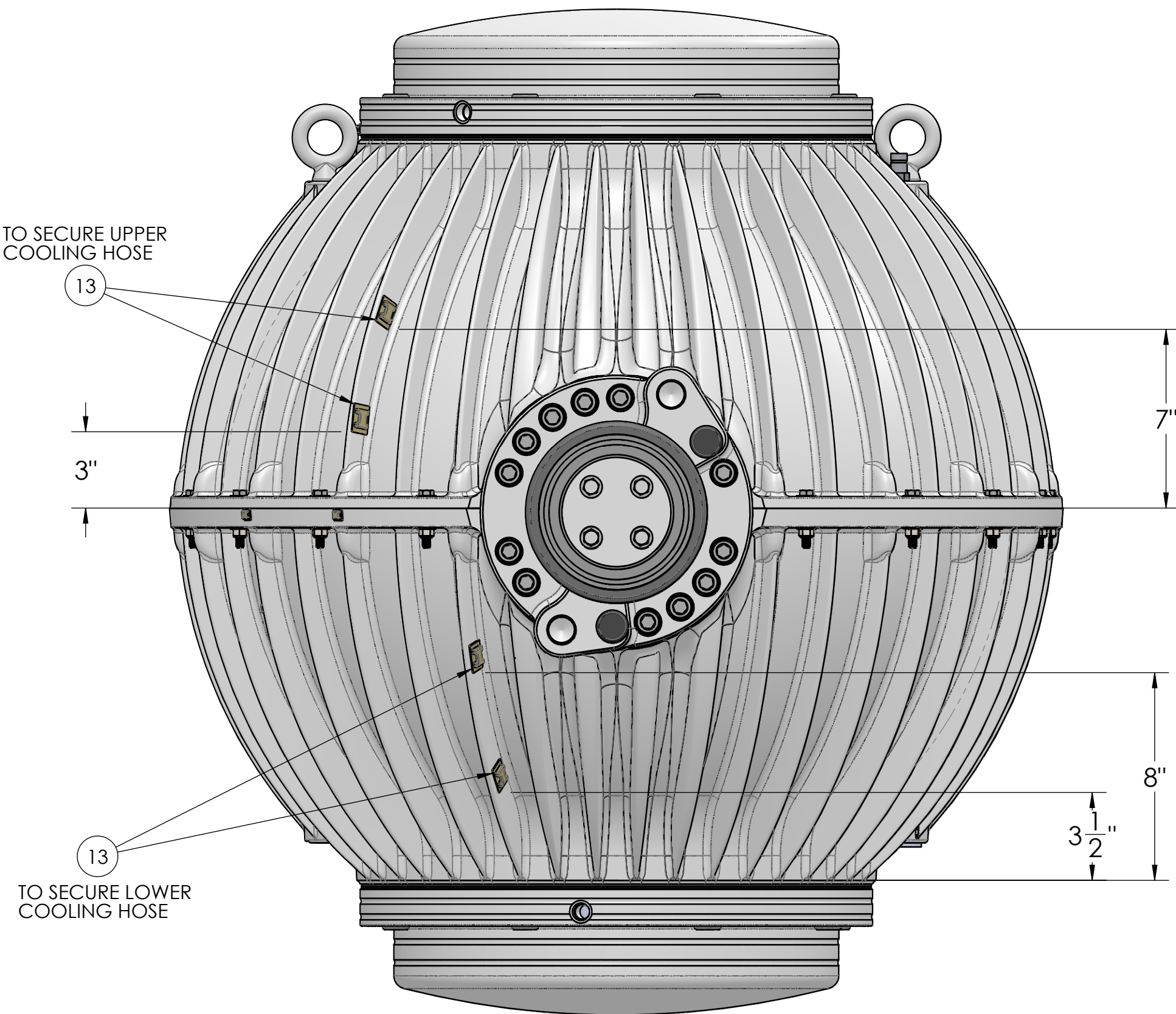


ITEM 12 30015, CLICK-BOND, WIRE-TIE MOUNT, SMALL

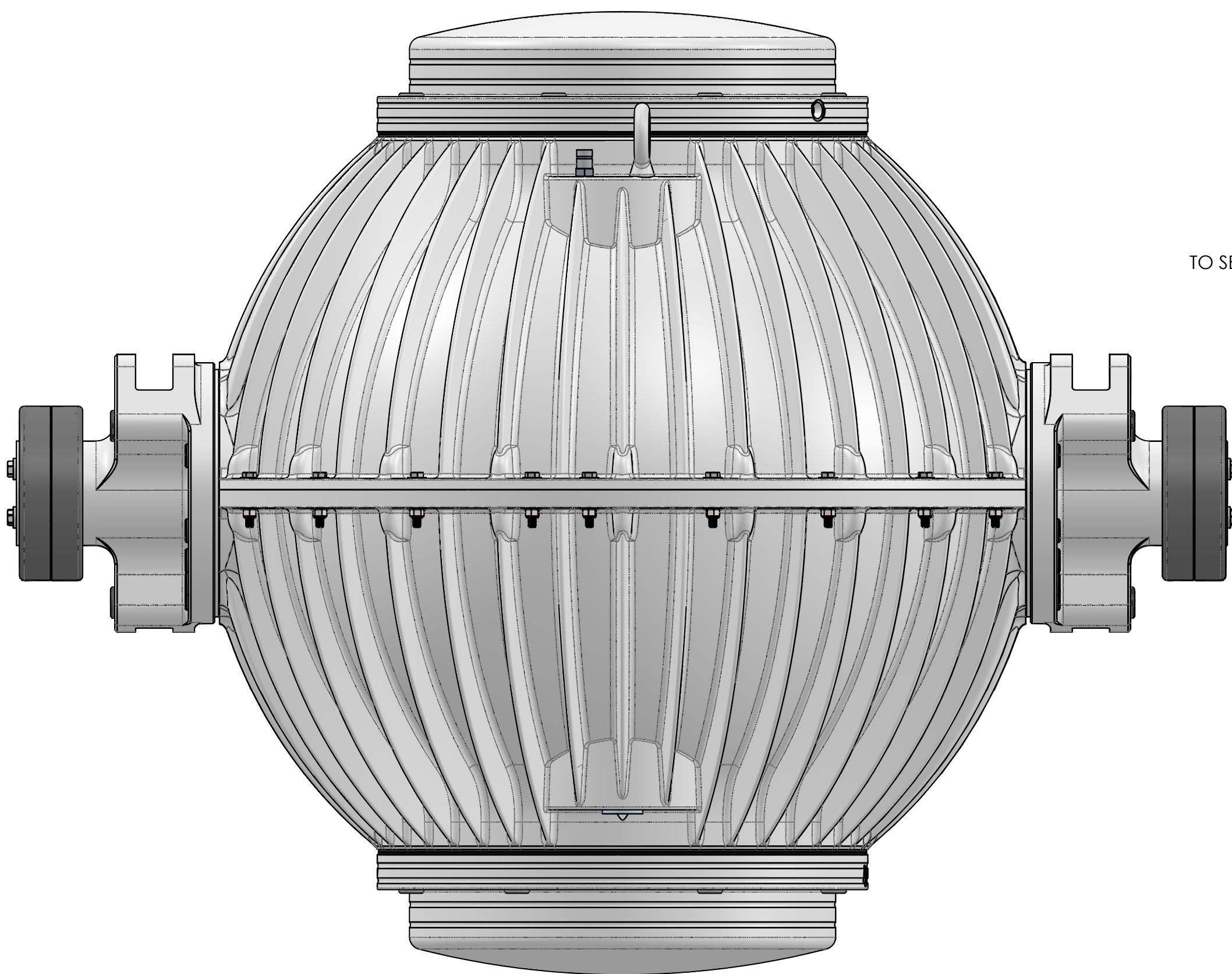
VIEW FROM BACK RIGHT SIDE
NO CLICK BONDS ON LEFT SIDE



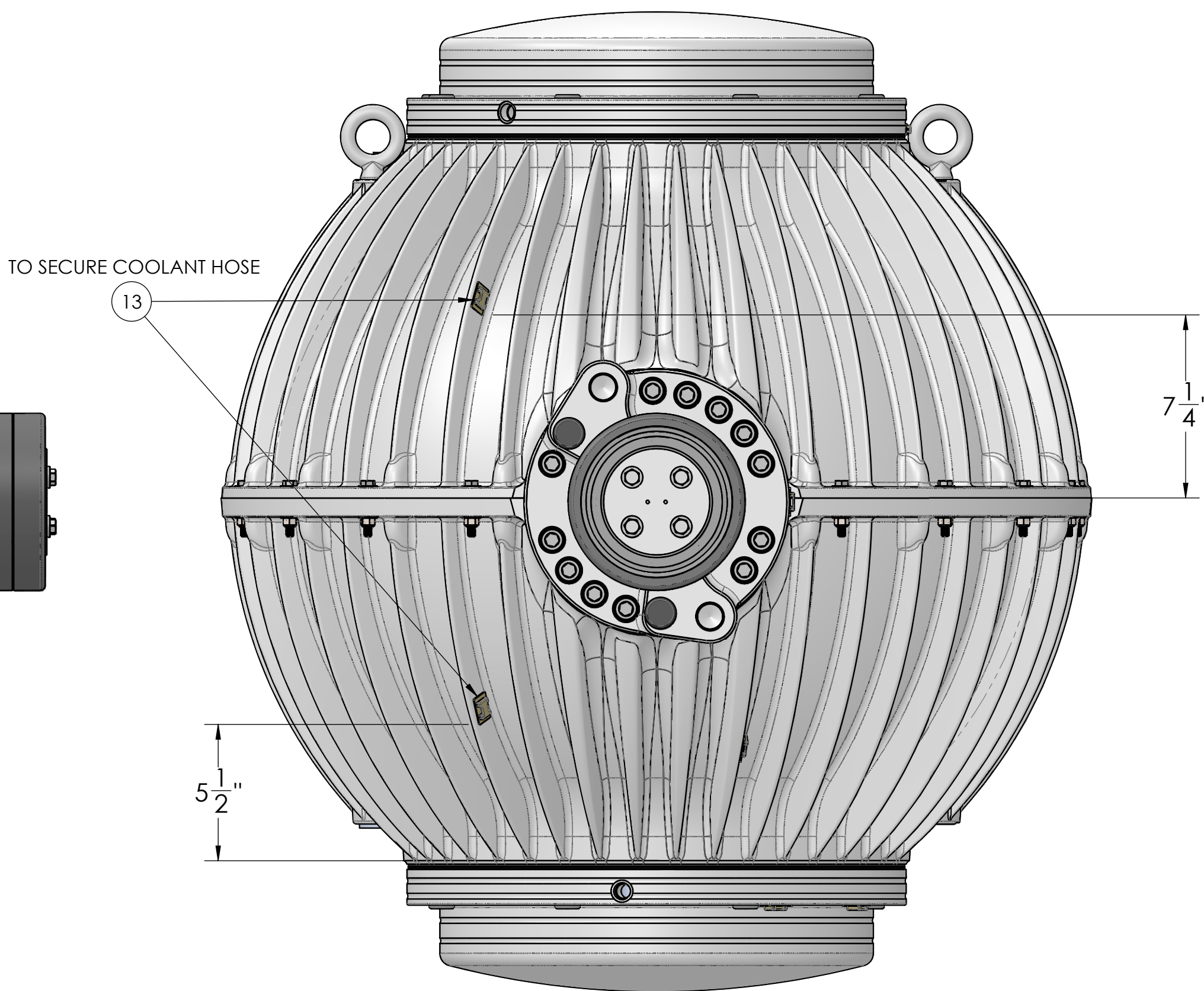
VIEW FROM RIGHT SIDE



VIEW FROM FRONT



VIEW FROM LEFT SIDE



VIEW FROM LOWER LEFT-REAR

