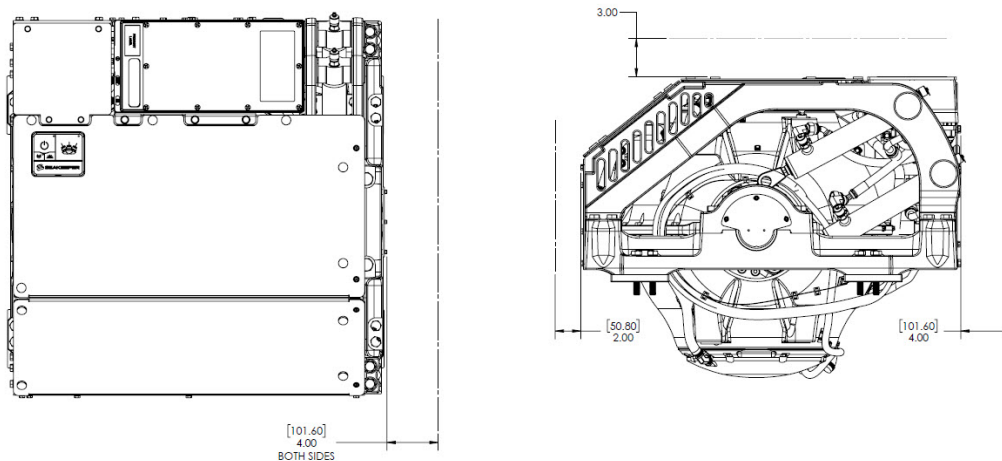


## 1. SEAKEEPER 5-6 CLEARANCE DIMENSIONS

The operating and service clearances of the Seakeeper 5-6 are shown in the following figure. The Seakeeper 5-6 installation must allow for the removal of the top and front cover for maintenance and service via top-down access or by providing access adjacent to the unit with the minimum overhead clearance specified. **The Seakeeper 5-6 cannot be serviced if the covers cannot be removed.**

REMINDER: Refer to the Seakeeper 5-6 Bolt-In Installation Details (90398) for additional information.

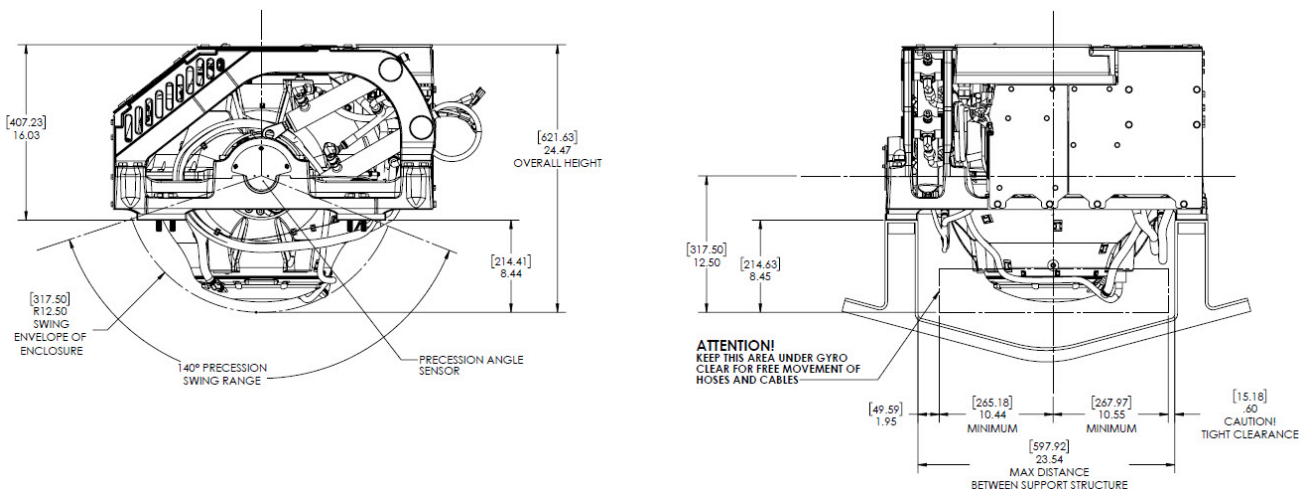
**VIEWS SHOWING REQUIRED CLEARANCES AROUND GYRO FOR USE OF HAND TOOLS, EASE OF MAINTENANCE, INSTALLATION, AND PROPER OPERATION.**



## ADEQUATE REGULAR MAINTENANCE, SERVICE, AND REPAIR OF COMPONENTS

**Figure 1: Seakeeper 5-6 Bolt-In Clearance Dimensions**

Tight clearances from cable guide bands to hull structure. See below figure for dimensions and reference Seakeeper drawing 90398 for complete gyro envelope.



**Figure 2: Seakeeper 5-6 Clearance Dimensions for Moving Hoses and Cables**

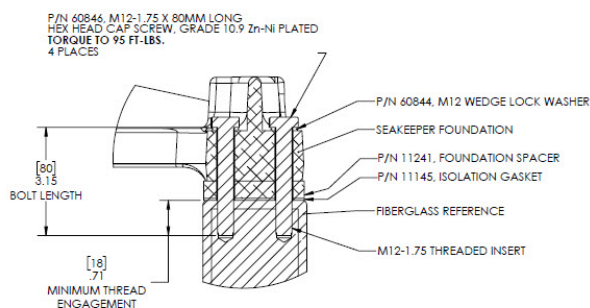
## 1. SEAKEEPER 5-6 MOUNTING DETAILS

The Seakeeper 5-6 is provided with a Bolt-In Kit (P/N 90400) for blind-hole installations. A Thru-Bolt Kit (P/N 90660) is available as an option. One of the Seakeeper fastener kits is required for the installation of the Seakeeper 5-6. If the appropriate thread engagement cannot be achieved with the available kits comparable M12 x 1.5 Grade 10.9 bolts should be sourced in the appropriate length.



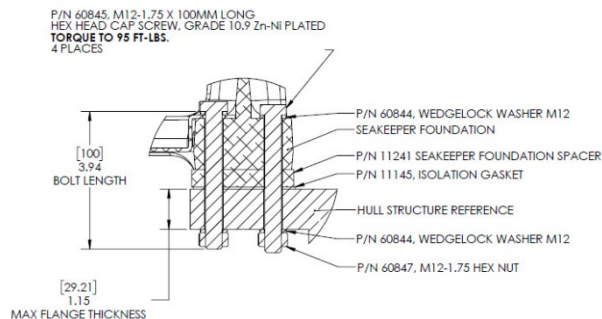
### 2.1 BOLT-IN KIT (P/N 90400)

The Seakeeper 5-6 Bolt-In Kit (P/N 90400) is provided in the scope of supply for Seakeeper 5-6 installations. The Bolt-In Kit components are shown in the following figure:



### 2.2 THRU-BOLT KIT (P/N 90660)

The Seakeeper 5-6 Thru-Bolt Kit (P/N 90660) is offered as an option for Seakeeper 5-6 installations. The Thru-Bolt Kit components are shown in the following figure:



**Figure 2: Seakeeper 5-6 Bolt-In Installation Guide (P/N 90398)**

#### WARNING:

New bolts must be used for each installation and re-installation. **Bolts cannot be reused.** Seakeeper 5-6 Foundation Bolts must be torqued to specification: 95 ft-lbs (129 N-m). Threaded inserts are **required** for aluminum (or similar) tapping plates. Foundation spacers must be used for Bolt-In and Thru-Bolt installations.

REMINDER: Refer to the Seakeeper Installation Manual (90402) for detailed installation instructions.