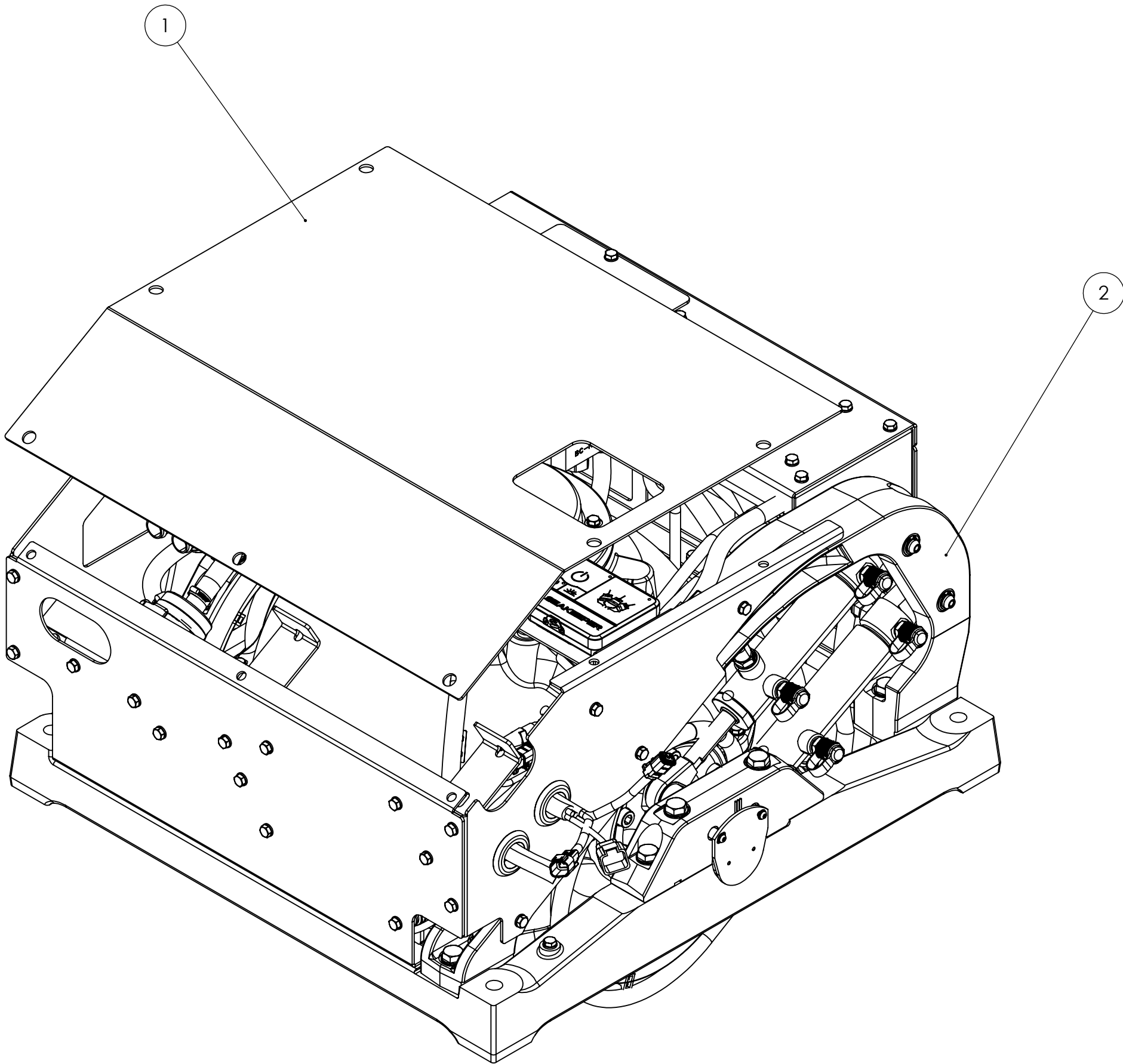



ATTENTION: BEFORE REMOVING GYRO, USE 90491, SEAKEEPER 2 DETAILED PACKING LIST , AS A CHECKLIST TO ENSURE ALL NECESSARY ITEMS ARE PRESENT WITHIN THE SHIPPING CRATE (SOME ITEMS COULD BE PACKAGED UNDERNEATH THE GYRO).

REV NO.	ECN NO.	ZONE	DESCRIPTION	DATE	APPRVD.
1	---	---	RELEASED FOR PRODUCTION	1/10/2018	WHK
2	0906	---	REFORMATTED	7/9/2021	TMD



2	12570	SEAKEEPER 2 TOP LEVEL ASSEMBLY (AM BOM)	1
1	12556	SEAKEEPER 2 TOP COVER PANEL, CONNECTBOX	1
ITEM NO.	PART NUMBER	DESCRIPTION	QTY.

		<u>PROPRIETARY AND CONFIDENTIAL</u>				SEAKEEPER®	
		THE INFORMATION CONTAINED IN THIS DRAWING IS THE SOLE PROPERTY OF SEAKEEPER INCORPORATED. ANY REPRODUCTION IN PART OR AS A WHOLE WITHOUT THE WRITTEN PERMISSION OF SEAKEEPER IS PROHIBITED.		Seakeeper Inc. 44425 Pecan Court, Suite 151 California, MD 20619			
WEIGHT - LBS : ---				NAME:			
				SEAKEEPER 2 HARDWARE SCOPE OF SUPPLY			
MATERIAL: ---		DRAWN: TMD	DATE: 09 JUL 2021	DWG NUMBER		REV. NO.	SHEET NO.
		ENG APPR:	DATE:	90469		2	1 OF 1
		PROD APPR:	DATE:				