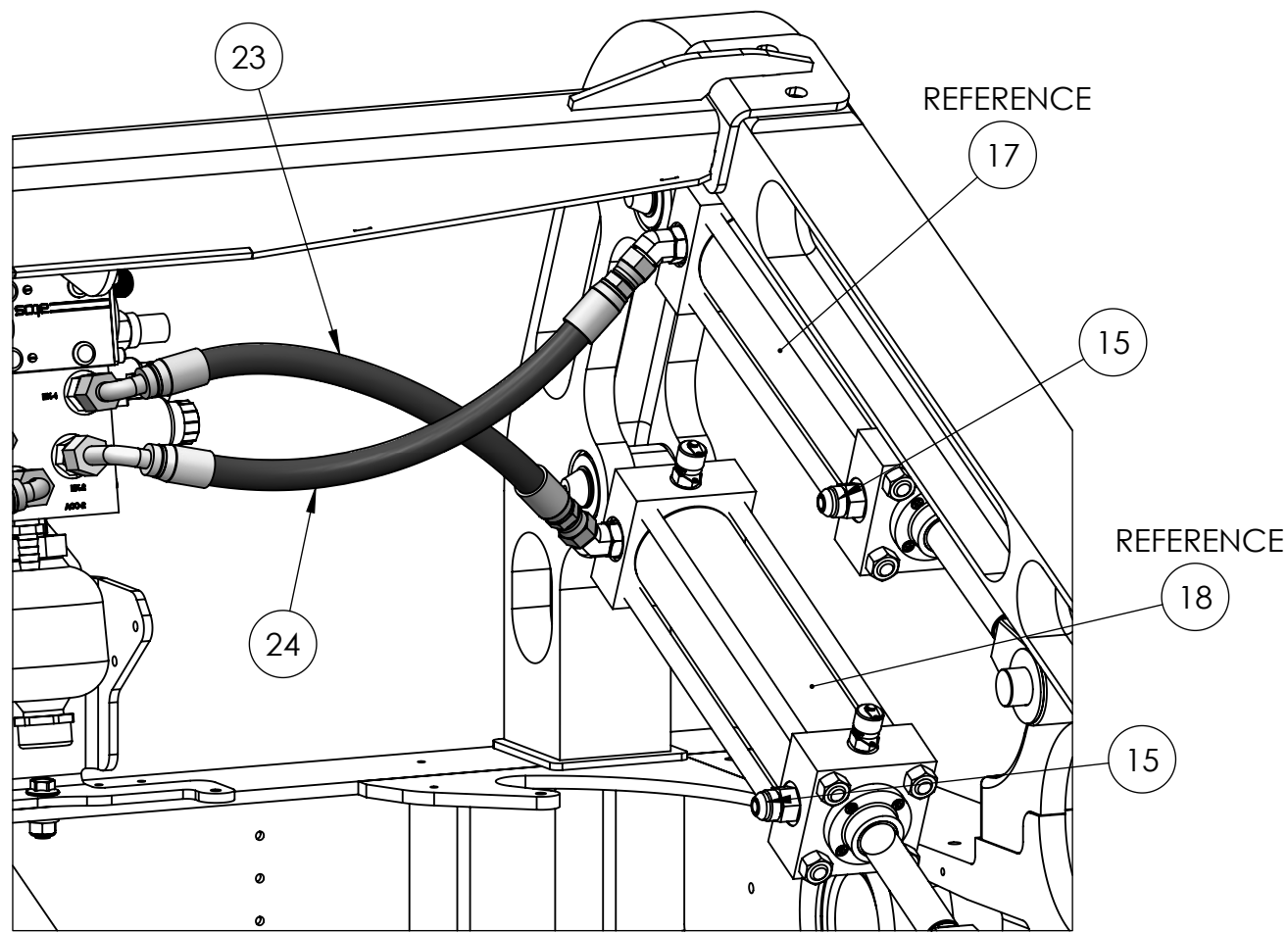
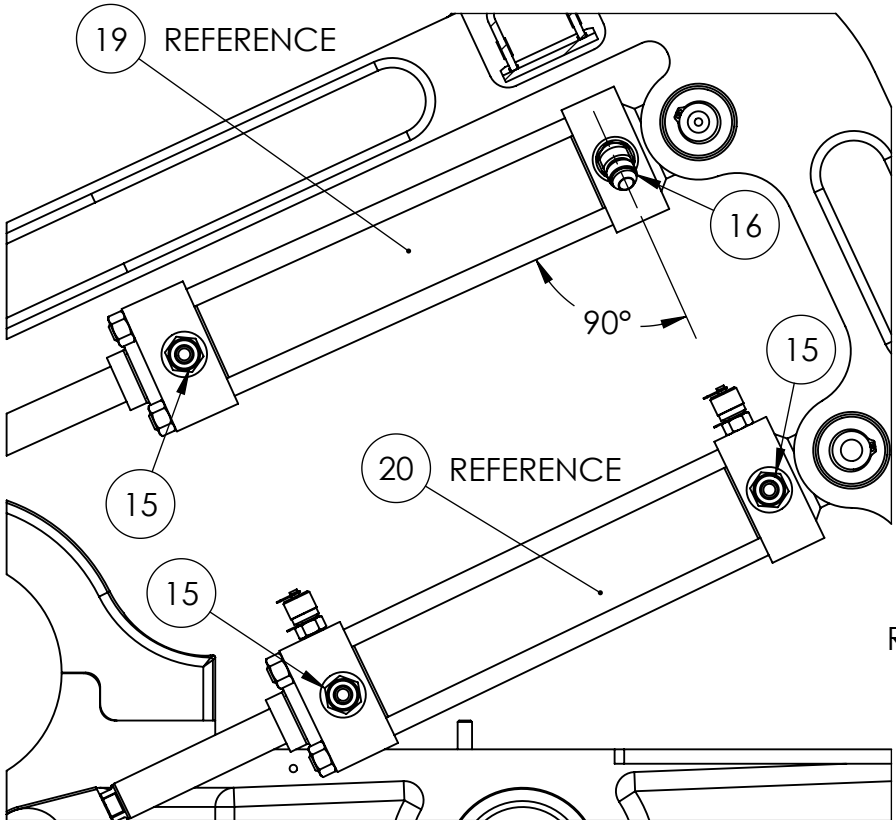


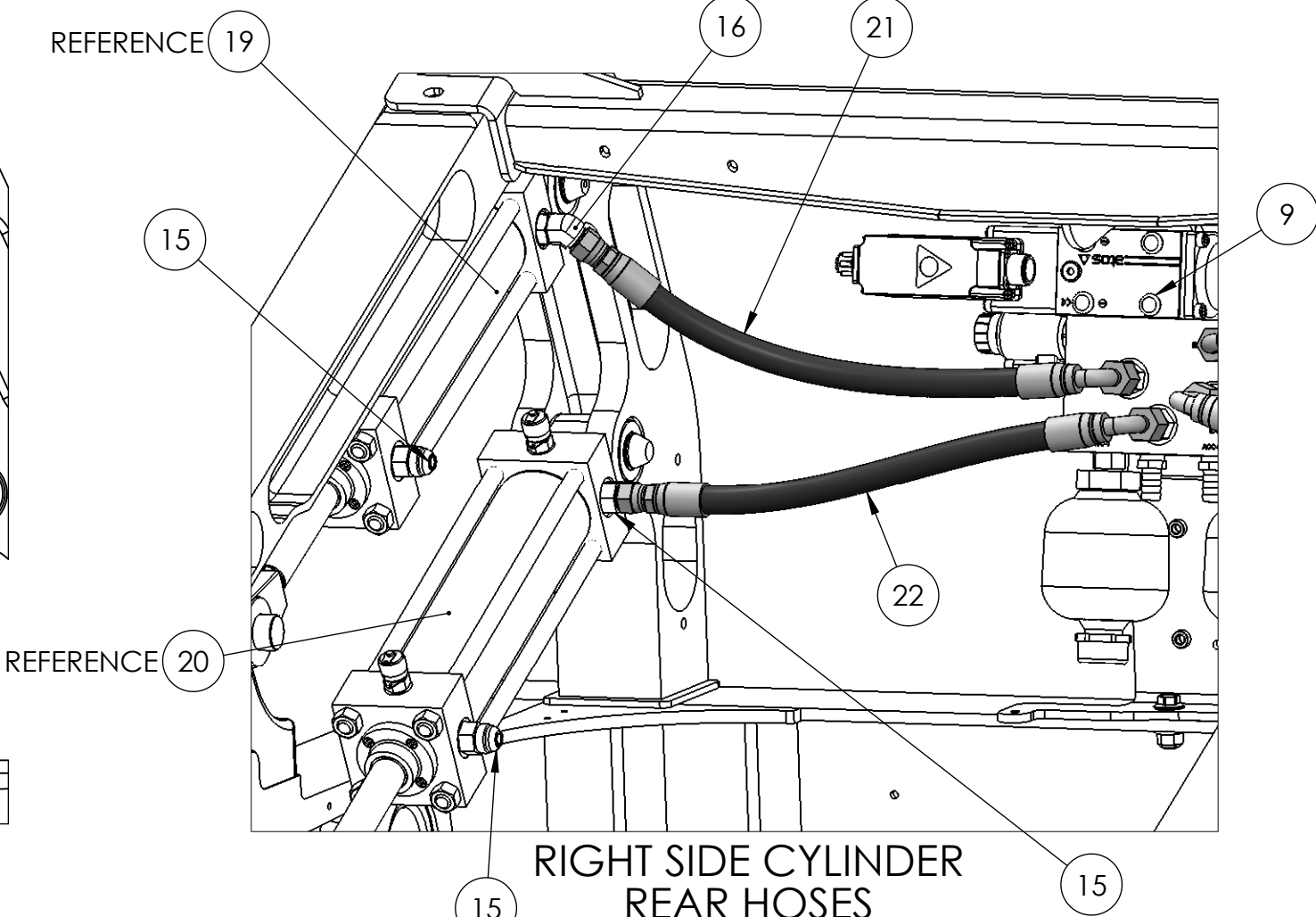
REV.	ECH NO.	ZONE	DESCRIPTION	DATE	APPROVED
1	177		INITIAL RELEASE	02/18/2015	BRD



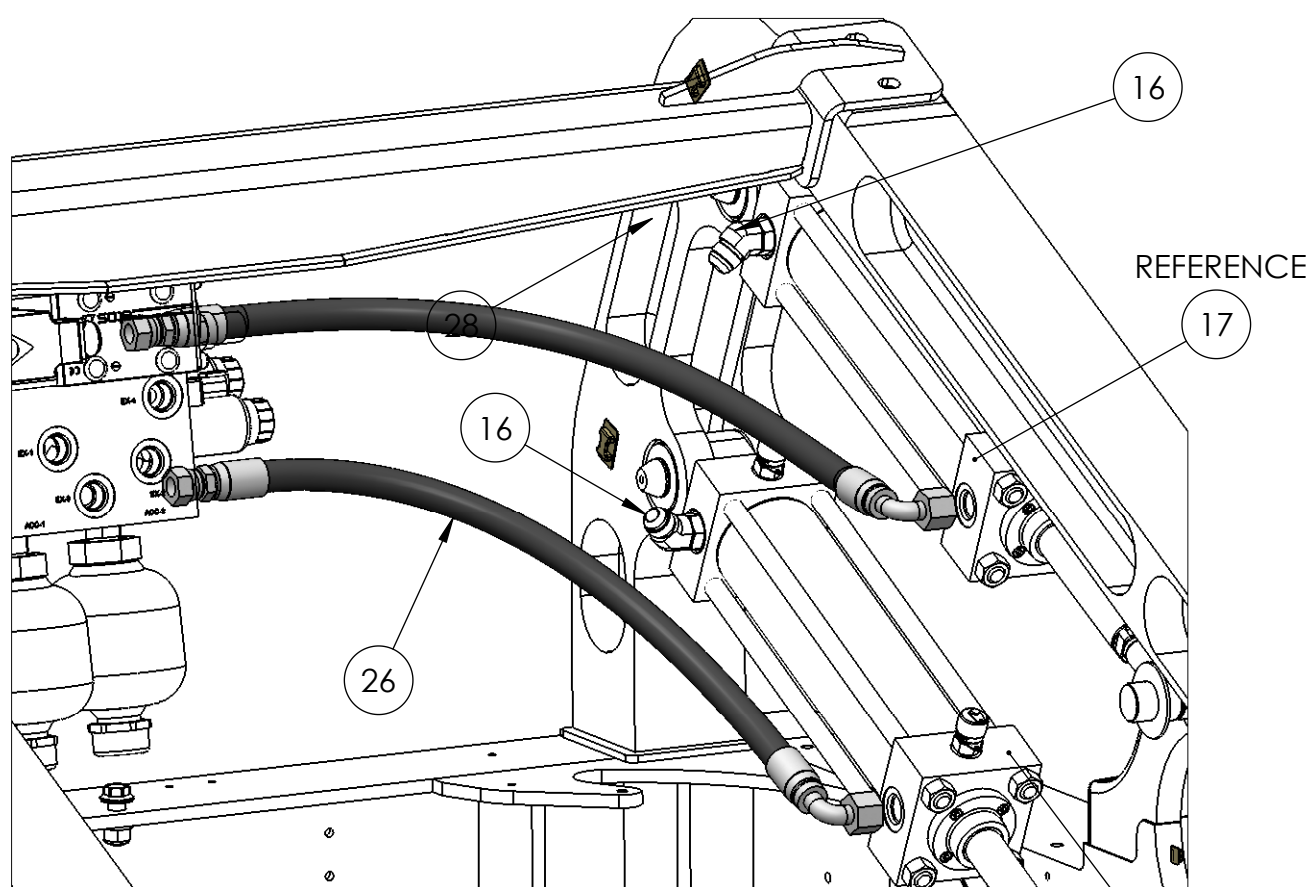
LEFT SIDE CYLINDER
REAR HOSES



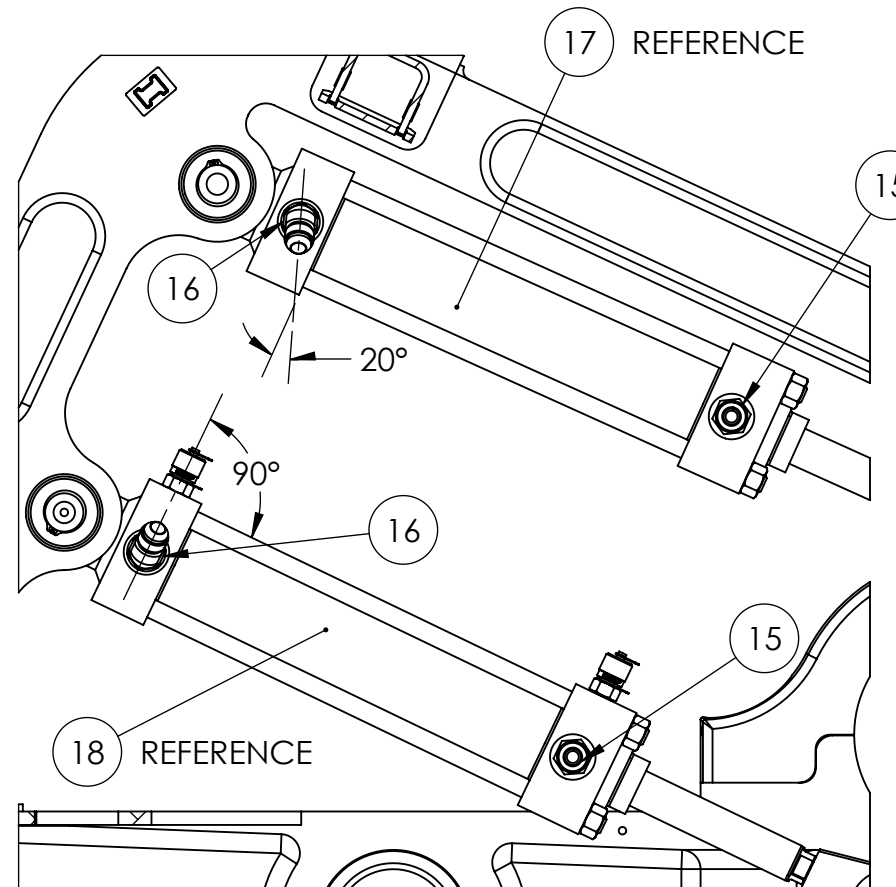
RIGHT SIDE CYLINDER
FITTING ORIENTATION



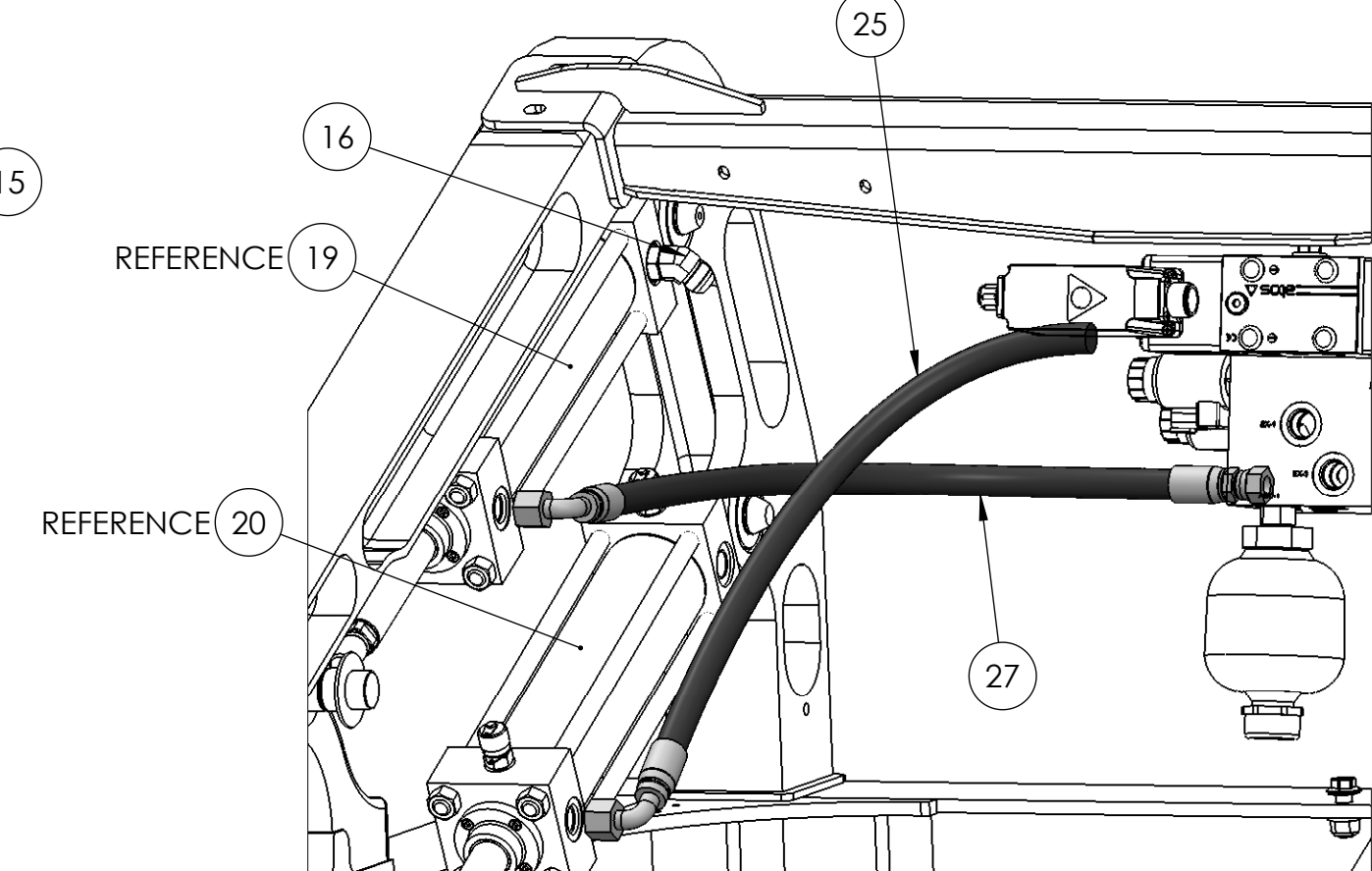
RIGHT SIDE CYLINDER
REAR HOSES



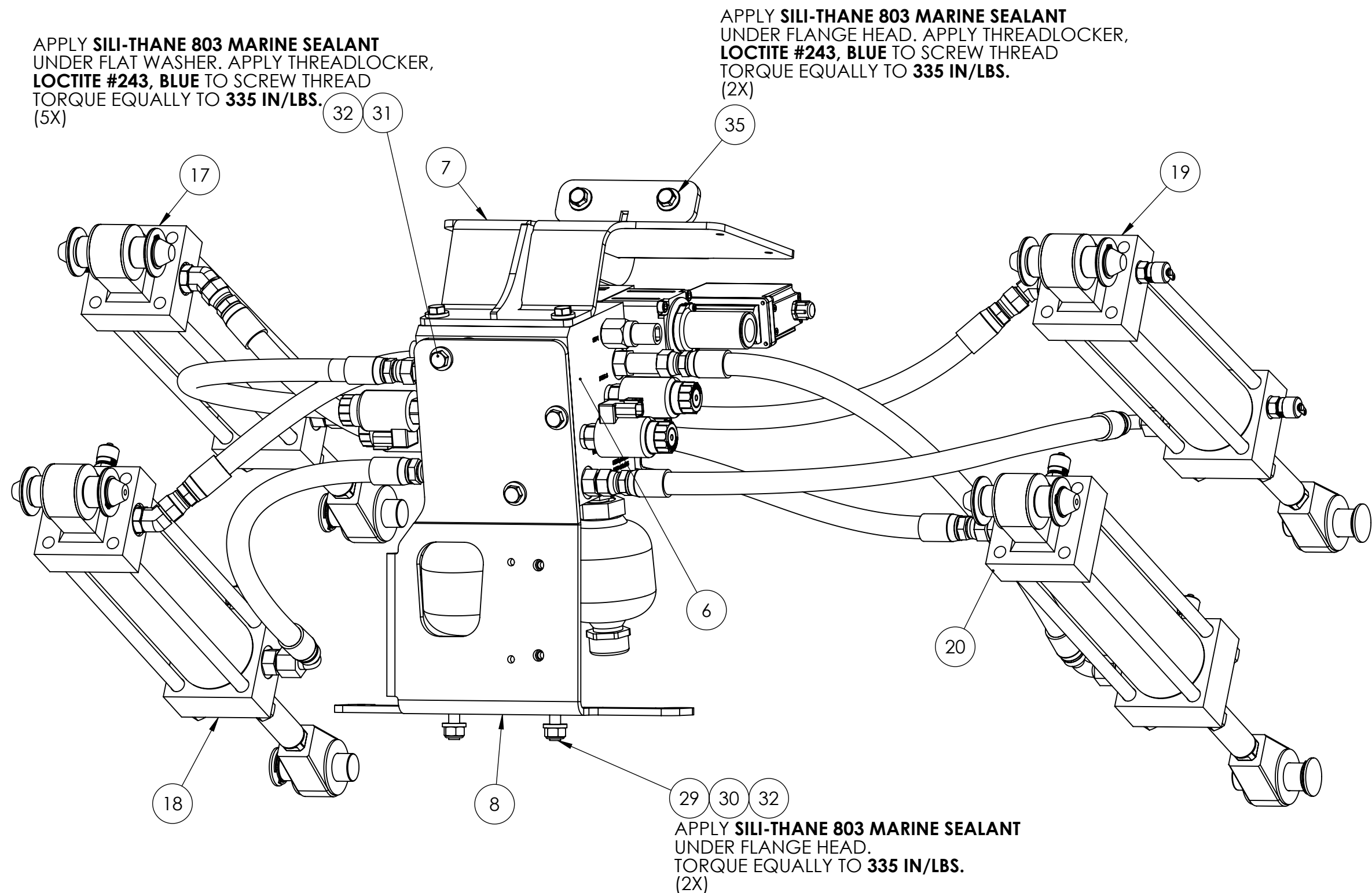
LEFT SIDE CYLINDER
FRONT HOSES



LEFT SIDE CYLINDER
FITTING ORIENTATION



RIGHT SIDE CYLINDER
FRONT HOSES

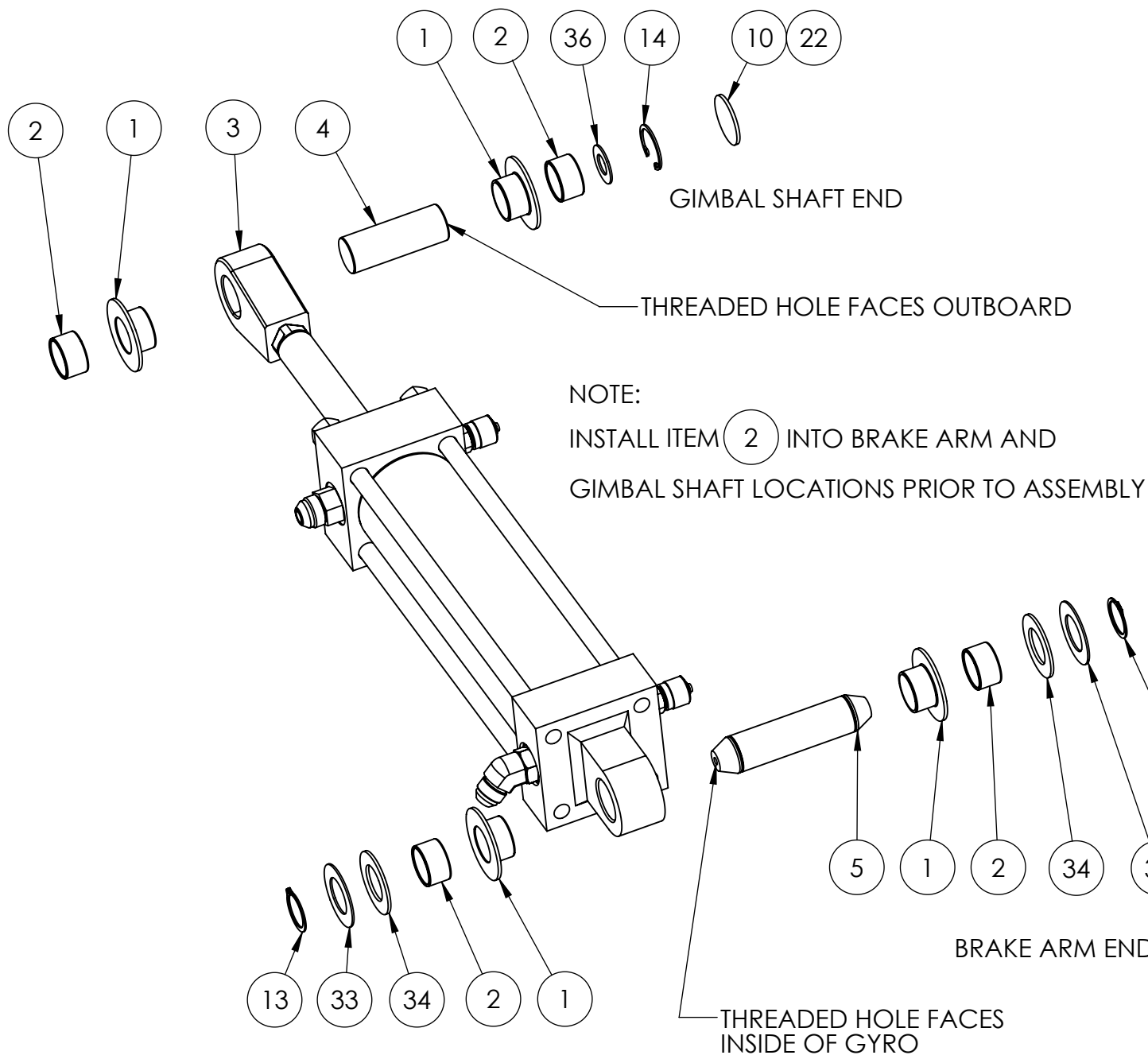


APPLY **SILI-THANE 803 MARINE SEALANT**
UNDER FLAT WASHER. APPLY THREADLOCKER,
LOCTITE #243, BLUE TO SCREW THREAD
TORQUE EQUALLY TO **335 IN/LBS.**
(5X)

APPLY **SILI-THANE 803 MARINE SEALANT**
UNDER FLANGE HEAD. APPLY THREADLOCKER,
LOCTITE #243, BLUE TO SCREW THREAD
TORQUE EQUALLY TO **335 IN/LBS.**
(2X)

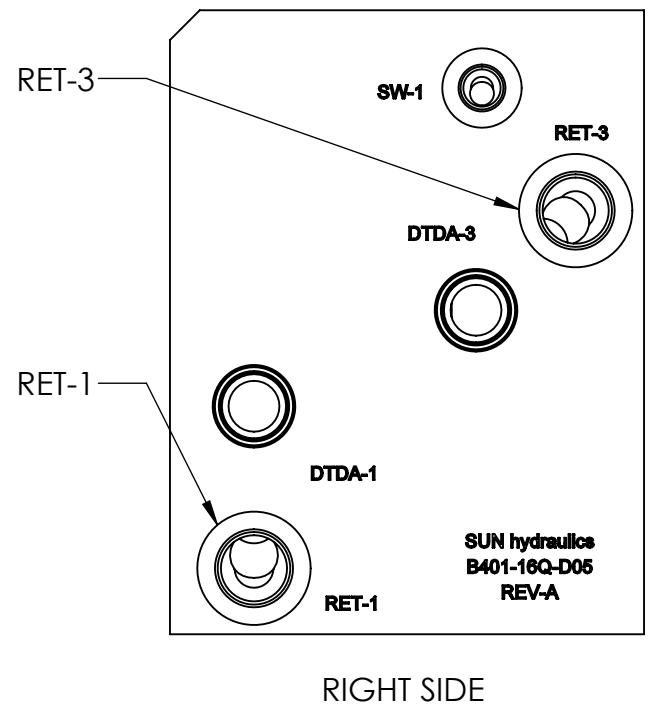
APPLY **SILI-THANE 803 MARINE SEALANT**
UNDER FLANGE HEAD.
TORQUE EQUALLY TO **335 IN/LBS.**
(2X)

TYPICAL BUSHING, PIN, RETAINER ASSEMBLY
FOR BRAKE CYLINDER MOUNTING

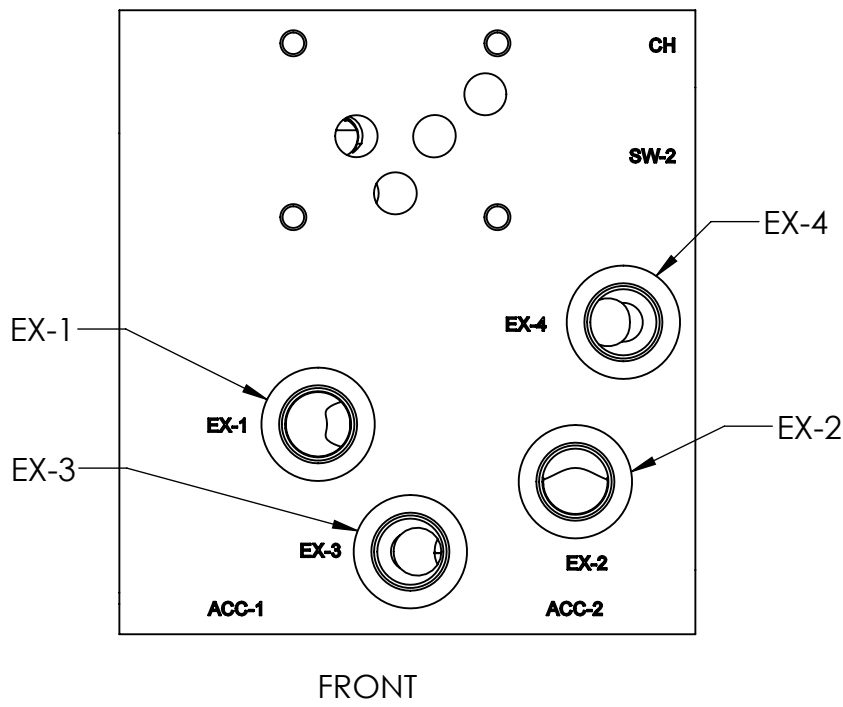


NOTE:
INSTALL ITEM (2) INTO BRAKE ARM AND
GIMBAL SHAFT LOCATIONS PRIOR TO ASSEMBLY

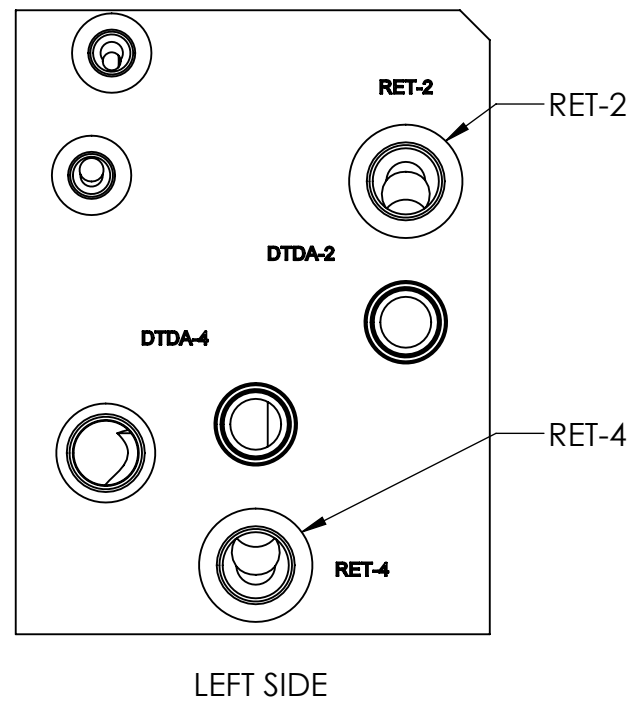
BRAKE MANIFOLD PORT IDENTIFICATIONS
FOR HYDRAULIC CYLINDER HOSES



RIGHT SIDE



FRONT



LEFT SIDE

37	70054	THREADLOCKER, LOCTITE #243, BLUE	---	AR	
36	60372	WASHER, FLAT NAS 1149, .562 ID	300 SERIES STAINLESS	4	
35	60366	SCREW, HEX HD FLANGED M10-1.5 X 20MM FULL TD 18-8 SS	18-8 STAINLESS STEEL	2	
34	60307	WASHER, FLAT NAS 1149, 1" INSIDE DIAMETER	300 SERIES STAINLESS	8	
33	60306	WASHER, FLAT, 1" INSIDE DIAMETER	DELTRIN	8	
32	60304	WASHER, FLAT .38 ID X .85 OD X .125 THICK	316 STAINLESS	7	
31	60303	SCREW, HEX HD CAP .38-16 X 1 FULL TD	316 STAINLESS	5	
30	60299	NUT, NYLOCK HEX DIN 985 M10-1.5	316 STAINLESS STEEL	2	
29	60298	SCREW, HEX HD FLANGED M10-1.5 X 30MM FULL TD	18-8 STAINLESS STEEL	2	
28	50138	SEAKEEPER 35, HYDRAULIC HOSE ASSY, RET-2 TO LEFT UPPER CYLINDER HEAD END	---	1	
27	50138	SEAKEEPER 35, HYDRAULIC HOSE ASSY, RET-1 TO RIGHT UPPER CYLINDER HEAD END	---	1	
26	50137	SEAKEEPER 35, HYDRAULIC HOSE ASSY, RET-4 TO LEFT LOWER CYLINDER HEAD END	---	1	
25	50137	SEAKEEPER 35, HYDRAULIC HOSE ASSY, RET-3 TO RIGHT LOWER CYLINDER HEAD END	---	1	
24	50135	SEAKEEPER 35, HYDRAULIC HOSE ASSY, EX-2 TO LEFT UPPER CYLINDER CAP END	---	1	
23	50135	SEAKEEPER 35, HYDRAULIC HOSE ASSY, EX-4 TO LEFT LOWER CYLINDER CAP END	---	1	
22	50133	SEAKEEPER 35, HYDRAULIC HOSE ASSY, EX-3 TO RIGHT LOWER CYLINDER CAP END	---	1	
21	50133	SEAKEEPER 35, HYDRAULIC HOSE ASSY, EX-1 TO RIGHT UPPER CYLINDER CAP END	---	1	
20	50132	LOWER RIGHT, HYDRAULIC BRAKE CYLINDER	---	1	
19	50131	UPPER RIGHT, HYDRAULIC BRAKE CYLINDER	---	1	
18	50130	LOWER LEFT, HYDRAULIC BRAKE CYLINDER	---	1	
17	50129	UPPER LEFT, HYDRAULIC BRAKE CYLINDER	---	1	
16	50088	ADAPTER, MALE, 45 DEGREE ELBOW	STEEL	3	
15	50008	ADAPTOR, MALE, STRAIGHT	STEEL	5	
14	40402	RETAINING RING, INTERNAL 1.125 BORE DIA	17-7 PH SS	4	
13	40382	EXTERNAL RETAINING RING, 1 INCH SHAFT	STAINLESS STEEL	8	
12	40250	SILI-THANE 803 MARINE SEALANT	POLYURETHANE	AR	
11	40244	VHB TAPE, 1.38 DIAMETER, .025 THICK	---	4	
10	40243	COVER, 1.38 INCH DIAMETER, BLACK	POLYETHYLENE	4	
9	40240	5/8" PLUG CAP	PLASTIC	4	
8	11075	SEAKEEPER 35, BRAKE MANIFOLD LOWER MOUNTING BRACKET	5052 ALUMINUM 1/4" SHEET	1	
7	11074	SEAKEEPER 35, BRAKE MANIFOLD, UPPER MOUNTING BRACKET ASSEMBLY	5052 ALUMINUM	1	
6	11067	SEAKEEPER 35-26, BRAKE MANIFOLD	---	1	
5	11012	SEAKEEPER 35, BRAKE CYLINDER PIVOT PIN	17-4 PH SS	4	
4	11011	SEAKEEPER 35, BRAKE CRANK PIN	17-4 PH SS	4	
3	10992	SEAKEEPER 35, BRAKE CYLINDER ROD END	1018 STEEL	4	
2	10988	SEAKEEPER 35, BRAKE BUSHING	PTFE COMPOSITE	16	
1	10987	SEAKEEPER 35, BRAKE CYLINDER FLANGED BUSHING	PTFE COMPOSITE	16	
ITEM NO.	PART NO.	DESCRIPTION	MATERIAL	QTY.	NOTE

WEIGHT - LBS : 200

MATERIAL: SEE BOM

PROPRIETARY AND CONFIDENTIAL
THE INFORMATION CONTAINED IN THIS
DRAWING IS THE SOLE PROPERTY OF
SEAKEEPER INCORPORATED. ANY
REPRODUCTION IN PART OR AS A WHOLE
WITHOUT THE WRITTEN PERMISSION OF
SEAKEEPER IS PROHIBITED.

DRAWN: PRA
ENG APPR: BRD
DATE: 20AUG2014
DATE: 20AUG2014

Seakeeper Inc.
44425 Pecan Court
Suite 151
California, MD 20619
NAME: SEAKEEPER 35 BRAKE SUB-
SYSTEM, SERVICE REFERENCE
DWG NUMBER: 11129-SP
REV. NO.: 1
SHEET NO.: 1 OF 1