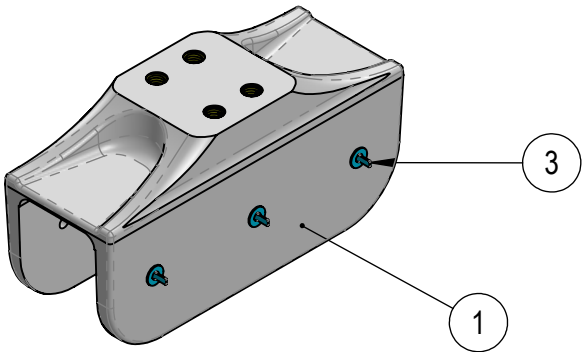
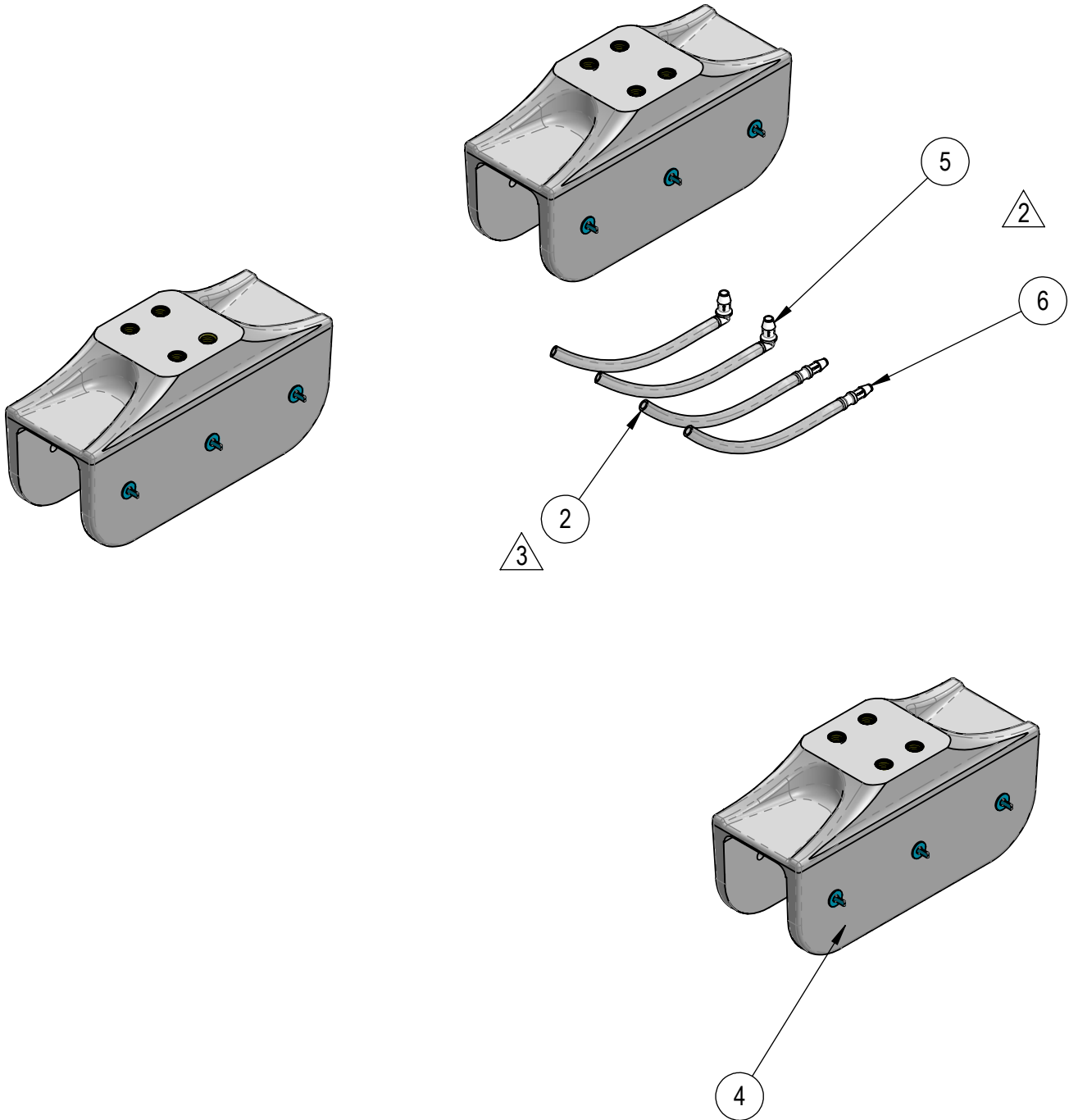


NOTE: 1) THIS GROUP OF COMPONENTS IS OFFERED AS AN OPTIONAL MEANS OF INSTALLING THE SEAKEEPER 9 GYRO USING BONDING ADHESIVE INSTEAD OF A DIRECT BOLT-IN METHOD. SEE BOND-IN INSTALLATION GUIDELINE DWG. # 90226 FOR SADDLE INSTALLATION SPECIFICATIONS AND OTHER IMPORTANT INFORMATION.

2) USE THE HARDWARE PROVIDED WITH THE STANDARD BOLT-IN VERSION GYRO, M14-2.0 X 85mm LG. CLASS 10.9 HEX HEAD CAP SCREWS AND FLAT WASHERS. SEAKEEPER RECOMMENDS USING NICKEL-BASED ANTI-SEIZE ON BOLT THREADS AND MARINE GRADE SEALANT UNDER WASHERS & BOLT HEADS DURING ASSEMBLY. TORQUE TO 100 FT/LBS. (136 Nm)

REV NO.	ECN NO.	ZONE	DESCRIPTION	DATE	APPRVD.
1	0174		RELEASED FOR PRODUCTION	1/17/2014	RSK
2	0270		REPLACED ORIGINAL NOZZLE KIT WITH STRAIGHT AND 90 ELBOW FITTINGS WITH TUBING	3/6/2015	RSK
3			ADDED CUT LENGTH TO TUBING DESCRIPTION	1/28/2019	SAC
4	0809		UPDATED NOTE 2	6/4/2021	EMS



6	40441	TUBE BARB FITTING, STRAIGHT, .25 ID TO .313 ID	NYLON	2
5	40440	TUBE BARB FITTING, 90 DEGREE, .25 ID TO .313 ID	NYLON	2
4	40370	NG9 SADDLE KIT DECAL SHEET	---	4
3	40264	PLUG, ADHESIVE INJECTION HOLE, BLUE	RUBBER	24
2	40146	CLEAR PVC TUBE, .25ID, .38 OD, 35PSI, X 6" LONG	PVC	4
1	10858	SEAKEEPER 9 FINISH MACHINED SADDLE	A356 CAST ALUM	4
ITEM NO.	PART NO.	DESCRIPTION	MATERIAL	QTY.

APPLY DECALS ON OUTSIDE FACE 4 PLACES,
2 SADDLES WILL BE OPPOSITE AS SHOWN.


WEIGHT - LBS : ---

MATERIAL: ---

PROPRIETARY AND CONFIDENTIAL

THE INFORMATION CONTAINED IN THIS DRAWING IS THE SOLE PROPERTY OF SEAKEEPER INCORPORATED. ANY REPRODUCTION IN PART OR AS A WHOLE WITHOUT THE WRITTEN PERMISSION OF SEAKEEPER IS PROHIBITED.

DRAWN: SAC	DATE: 13JAN14
ENG APPR: RSK	DATE: 13JAN14
PROD APPR: N/A	DATE: N/A



Seakeeper Inc.
44425 Pecan Court
Suite 151
California, MD 20619

NAME: SEAKEEPER 9 BOND-IN SADDLE KIT

DWG NUMBER 90227	REV. NO. SHEET NO. 4 1 OF 1
----------------------------	---------------------------------------