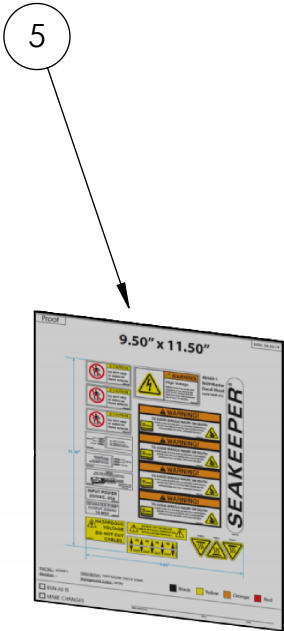
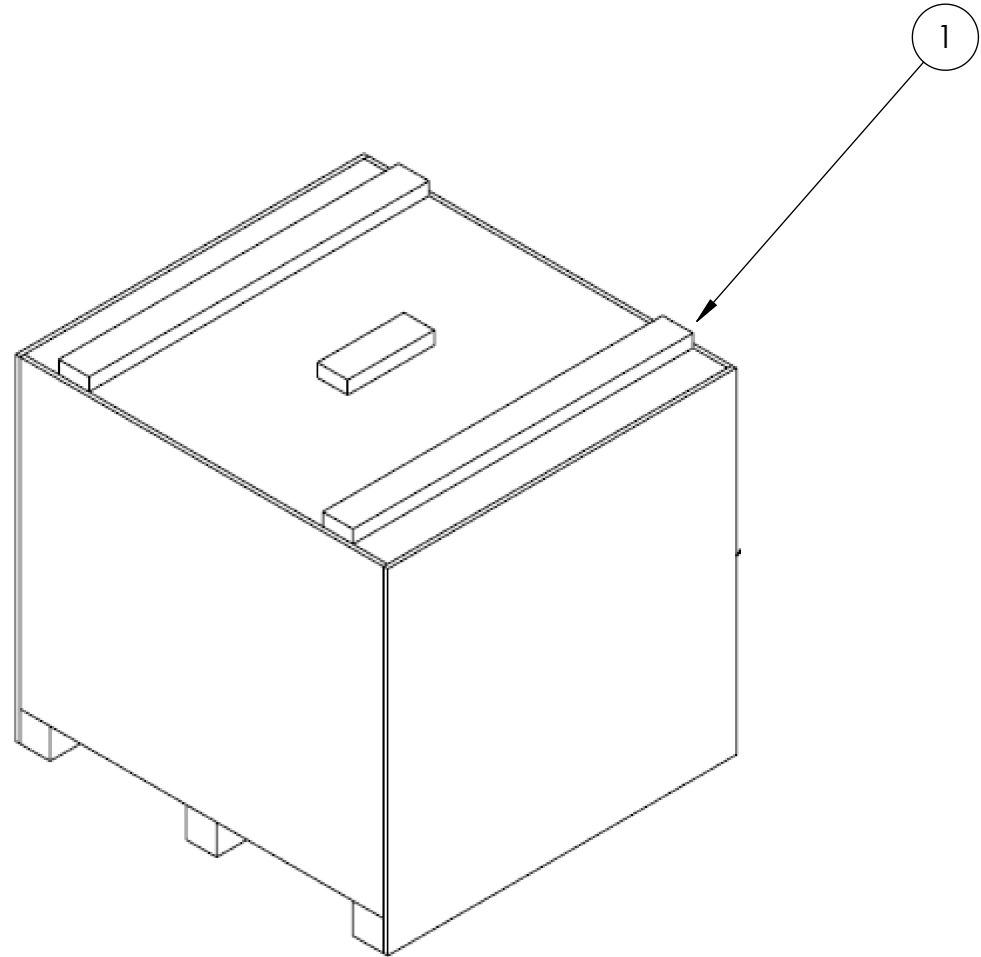
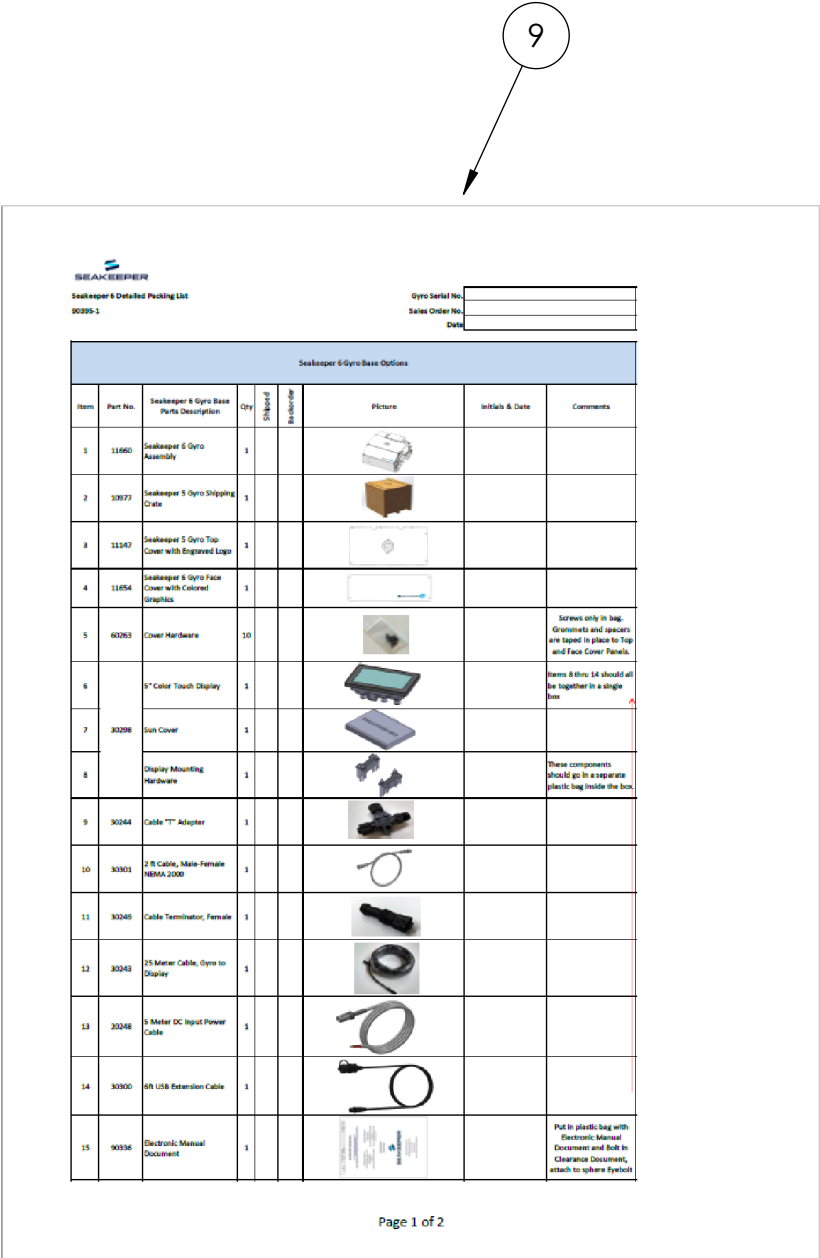
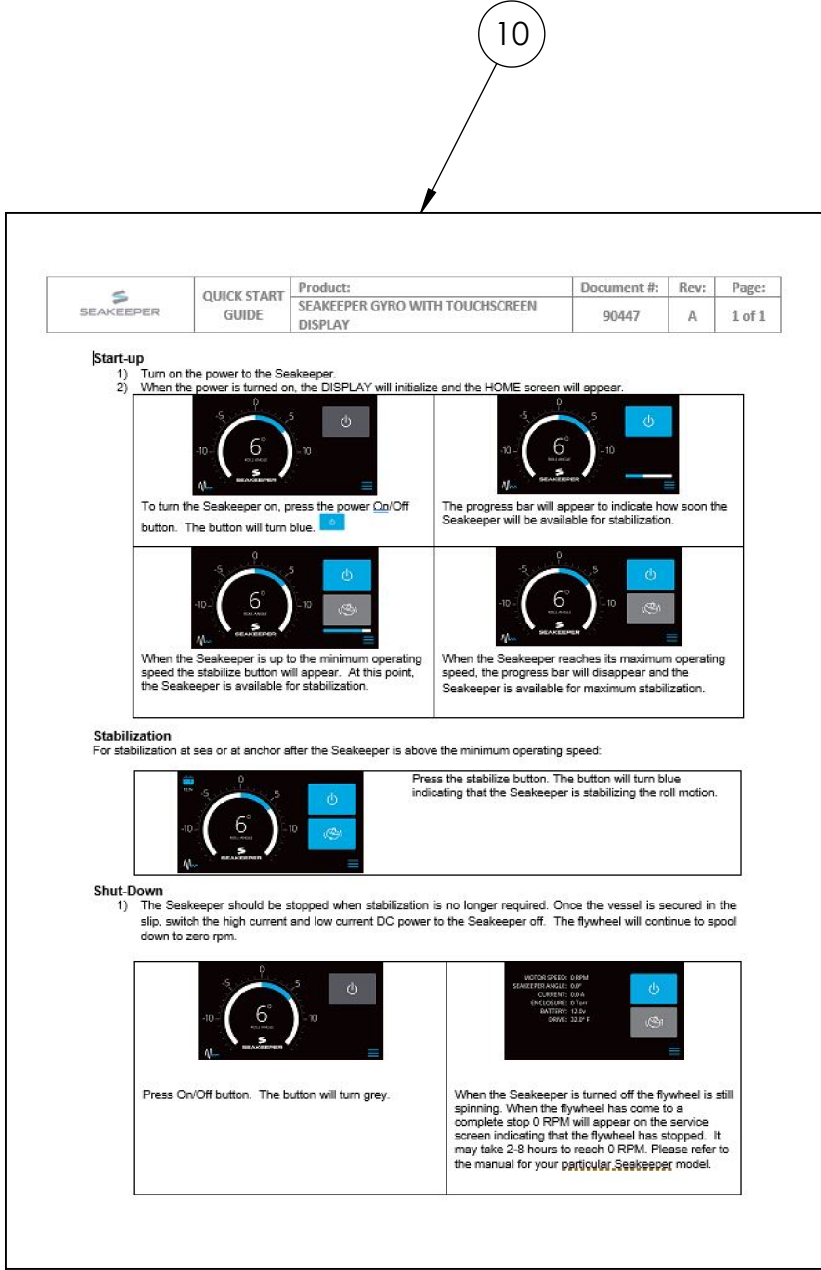
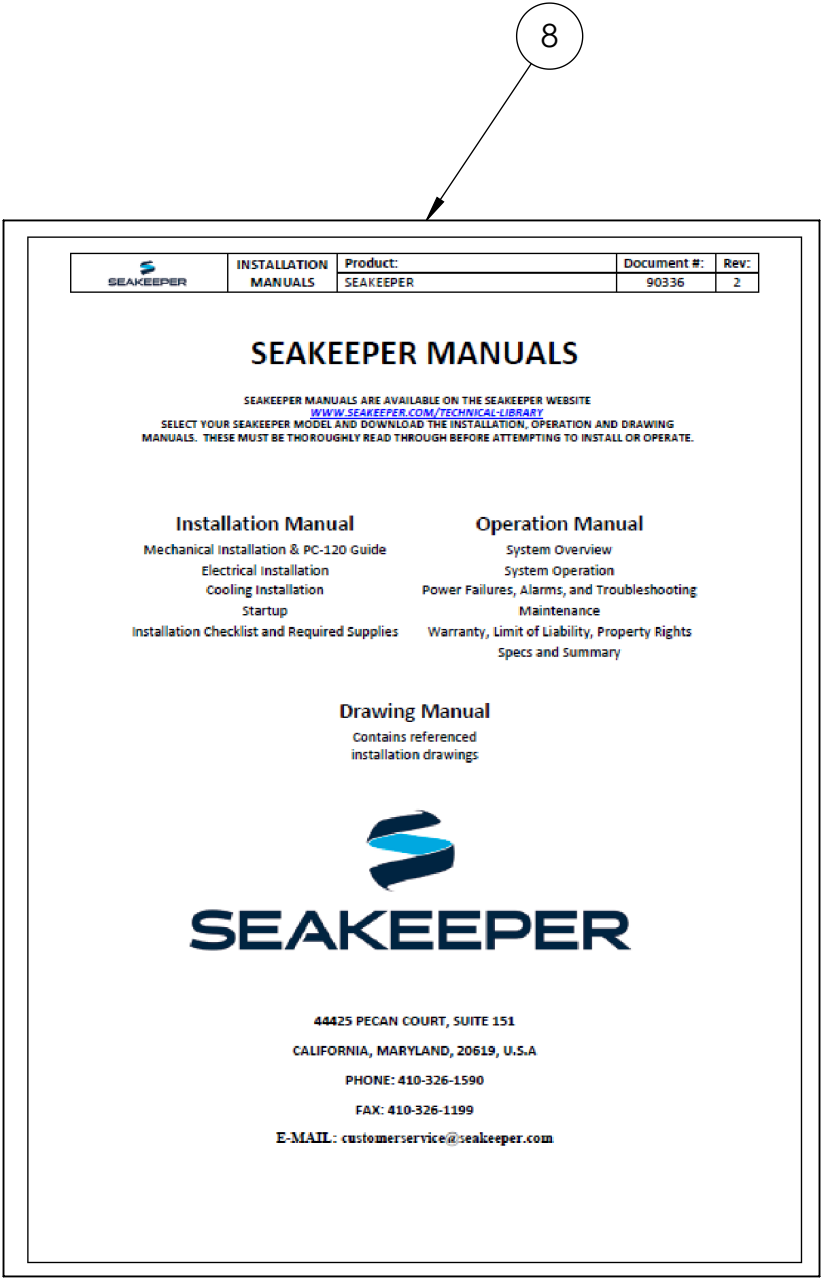
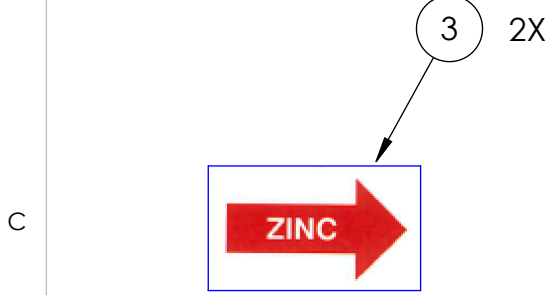
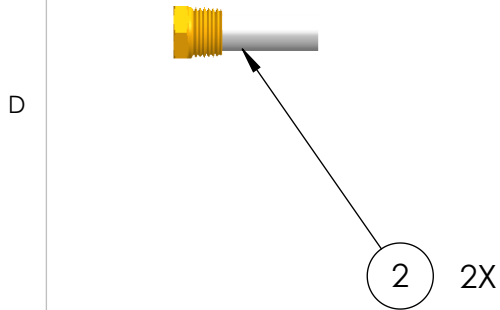
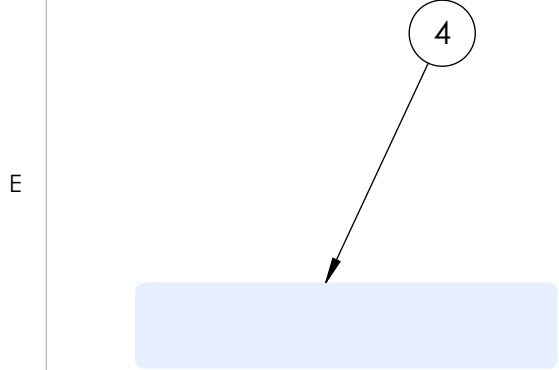
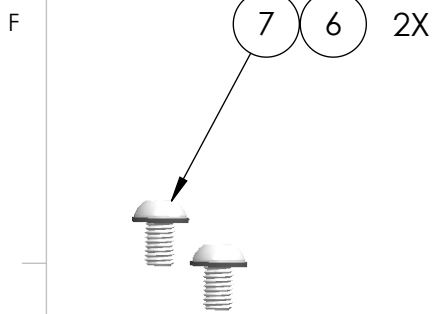


ITEMS NOT SHOWN TO SCALE, SOME ITEMS MAY APPEAR LARGER THAN NORMAL

REV NO.	ECN NO.	ZONE	DESCRIPTION	DATE	APPRVD.
---------	---------	------	-------------	------	---------



DECALS ARE TO BE APPLIED TO GYRO AT FINAL ASSEMBLY

10	90447	TOUCHSCREEN QUICK START GUIDE	1	
9	90395	SK6 PACKING LIST	1	
8	90336	SEAKEEPER ELECTRONIC MANUAL DOCUMENT	1	
7	60485	SCREW, BUTTON HD SKT CAP, M10-1.5 X 16MM LG	2	
6	60484	WASHER, FLAT, .75OD X .375ID X .062THK	2	
5	40513	SK6 DECAL SHEET	1	
4	40512	SK6 SERIAL PLATE	1	
3	40481	ZINC ANODE DECAL	2	
2	40446	ZINC ANODE, 3/8" NPT PLUG, 1/2" DIA X 1.25" LG	2	SPARES
1	10977	SK5 SHIPPING CRATE	1	
ITEM NO.	PART NO.	DESCRIPTION	QTY.	NOTE

WEIGHT - LBS : ---		MATERIAL: ---		DRAWN: WHK		DATE: 14SEP2016		ENG APPR: ---		DATE: ---		PROD APPR: ---		DATE: ---		PROPRIETARY AND CONFIDENTIAL THE INFORMATION CONTAINED IN THIS DRAWING IS THE SOLE PROPERTY OF SEAKEEPER INCORPORATED. ANY REPRODUCTION IN PART OR AS A WHOLE WITHOUT THE WRITTEN PERMISSION OF SEAKEEPER IS PROHIBITED.		SEAKEEPER® Seakeeper Inc. 44425 Pecan Court, Suite 151 California, MD 20619		NAME: SK6 / 5HD OTHER SUB-SYSTEM SERVICE REFERENCE		DWG NUMBER 11675-SP		REV. NO. SHEET NO. 1 1 OF 1	
--------------------	--	---------------	--	------------	--	-----------------	--	---------------	--	-----------	--	----------------	--	-----------	--	---	--	--	--	--	--	---------------------	--	-----------------------------	--