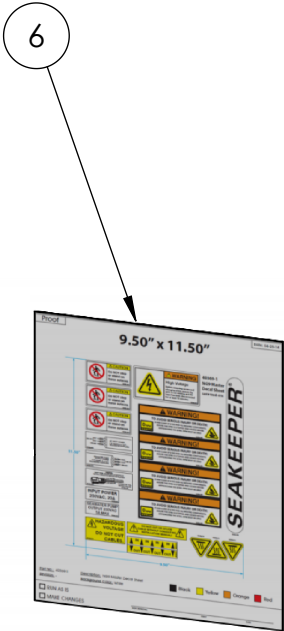
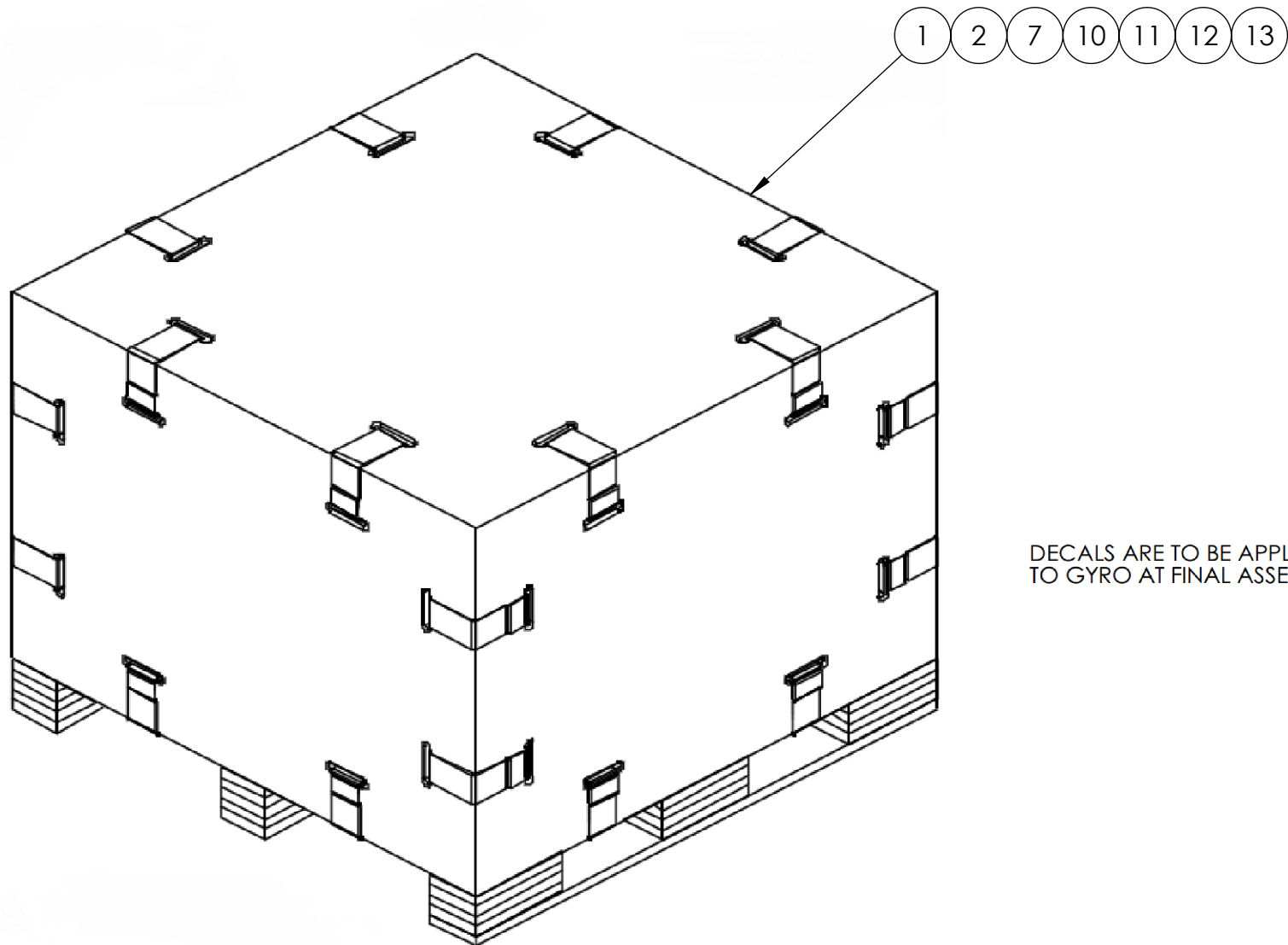
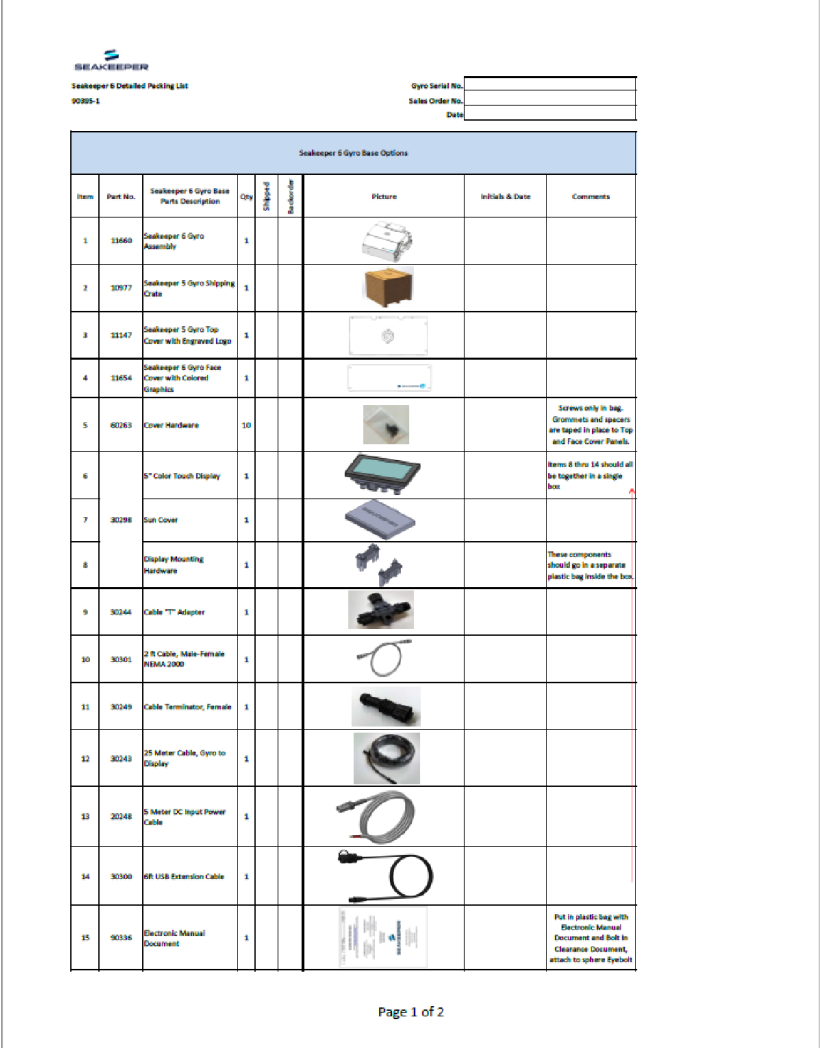
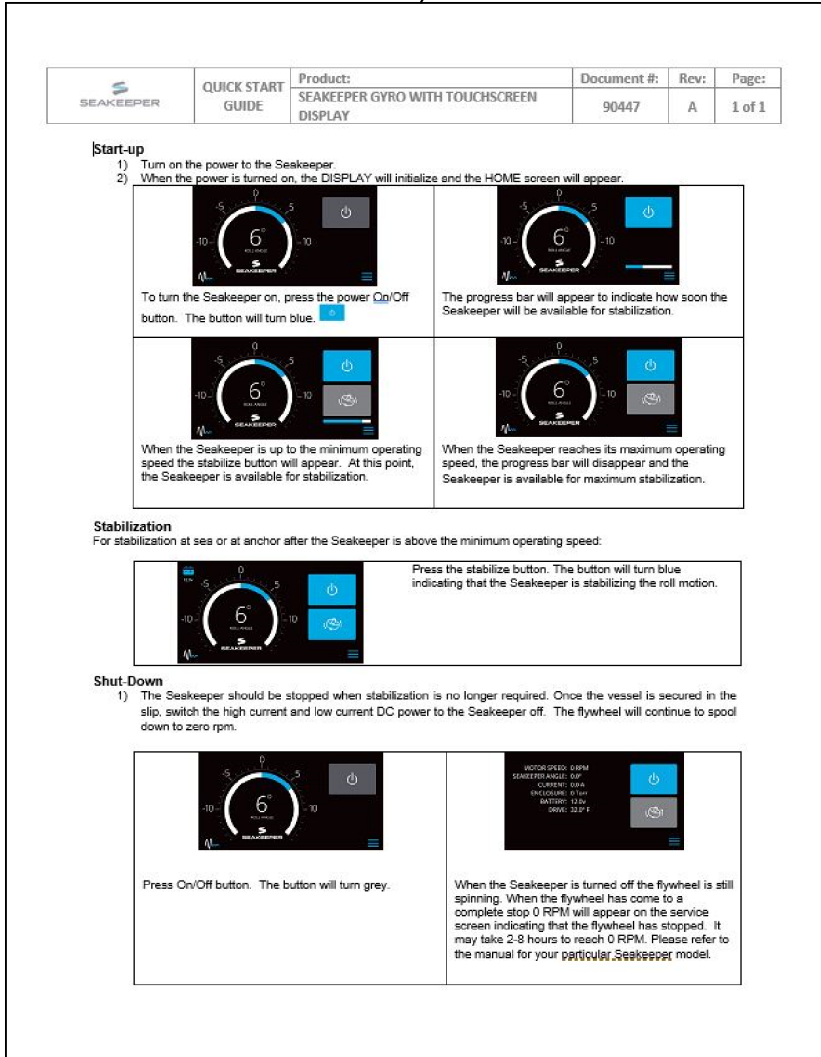
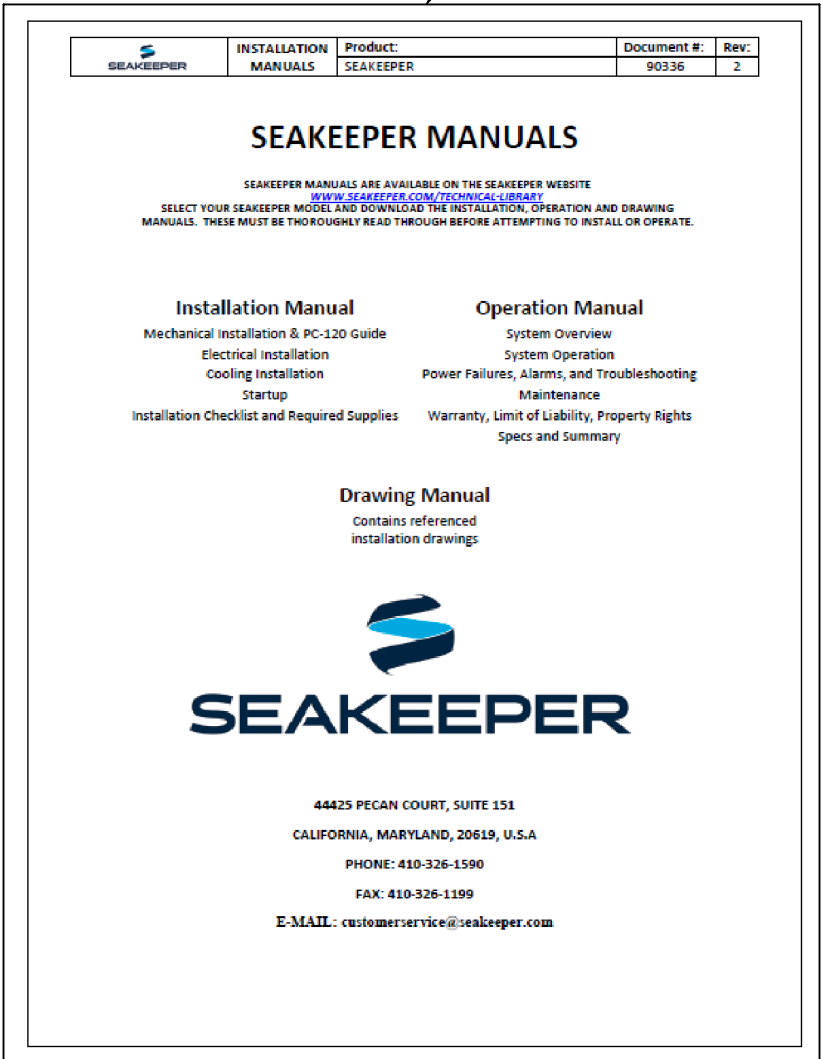
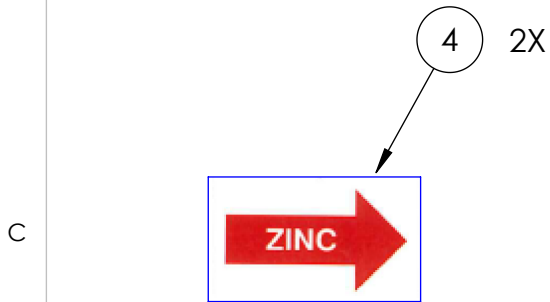
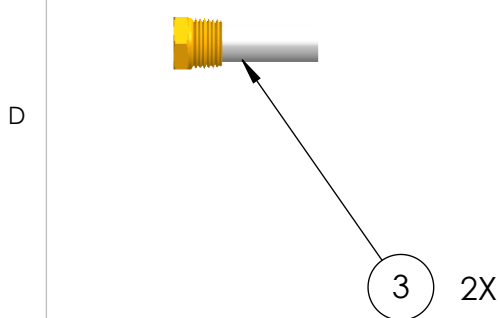
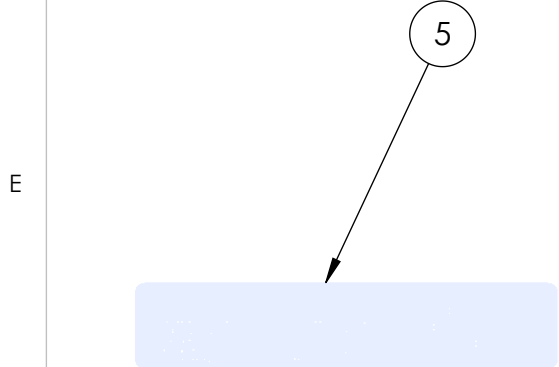
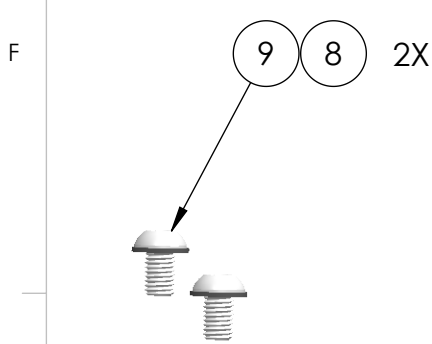


ITEMS NOT SHOWN TO SCALE, SOME ITEMS MAY APPEAR LARGER THAN NORMAL



DECALS ARE TO BE APPLIED TO GYRO AT FINAL ASSEMBLY

| | | | | |
|----------|----------|--|------|-------------|
| 16 | 90447 | TOUCHSCREEN QUICK START GUIDE | 1 | |
| 15 | 90395 | SK6 PACKING LIST | 1 | |
| 14 | 90336 | SEAKEEPER ELECTRONIC MANUAL DOCUMENT | 1 | |
| 13 | 60682 | 3/8" FLAT WASHER, ZNC PLT STL | 4 | |
| 12 | 60680 | SCREW, HEX HD CAP, 3/8-16 X 3.5" LG, GR 5 | 4 | |
| 11 | 60679 | 1/2" LAG SCREW, 7" LONG | 4 | |
| 10 | 60678 | 3/8" FLAT WASHER, NYLON | 4 | |
| 9 | 60485 | SCREW, BUTTON HD SKT CAP, M10-1.5 X 16MM LG | 2 | |
| 8 | 60484 | WASHER, FLAT, .75OD X .375ID X .062THK | 2 | |
| 7 | 60359 | 1/2" FLAT WASHER, STEEL | 4 | 3 |
| 6 | 40513 | SK6 DECAL SHEET | 1 | |
| 5 | 40512 | SK6 SERIAL PLATE | 1 | |
| 4 | 40481 | ZINC ANODE DECAL | 2 | |
| 3 | 40446 | ZINC ANODE, 3/8" NPT PLUG, 1/2" DIA X 1.25" LG | 2 | SPARES |
| 2 | 12268 | SK6 COLLAPSIBLE SHIPPING CRATE | 1 | |
| 1 | 12134 | SK6 SHIPPING CRATE COMPONENTS | 1 | WOOD & FOAM |
| ITEM NO. | PART NO. | DESCRIPTION | QTY. | NOTE |

| | | | | | | | | | |
|--------------------|--|----------------------------|--|---------------------|--|---|--|--|--|
| WEIGHT - LBS : --- | | DRAWN: WHK DATE: 14SEP2016 | | DWG NUMBER 11675-SP | | REV. NO. 3 | | SHEET NO. 1 OF 1 | |
| MATERIAL: --- | | ENG APPR: DATE: | | PROD APPR: DATE: | | NAME: SK6/5 OTHER SUB-SYSTEM, SERVICE REFERENCE | | SEAKEEPER Inc. 44425 Pecan Court, Suite 151 California, MD 20619 | |
| | | | | | | | | | |