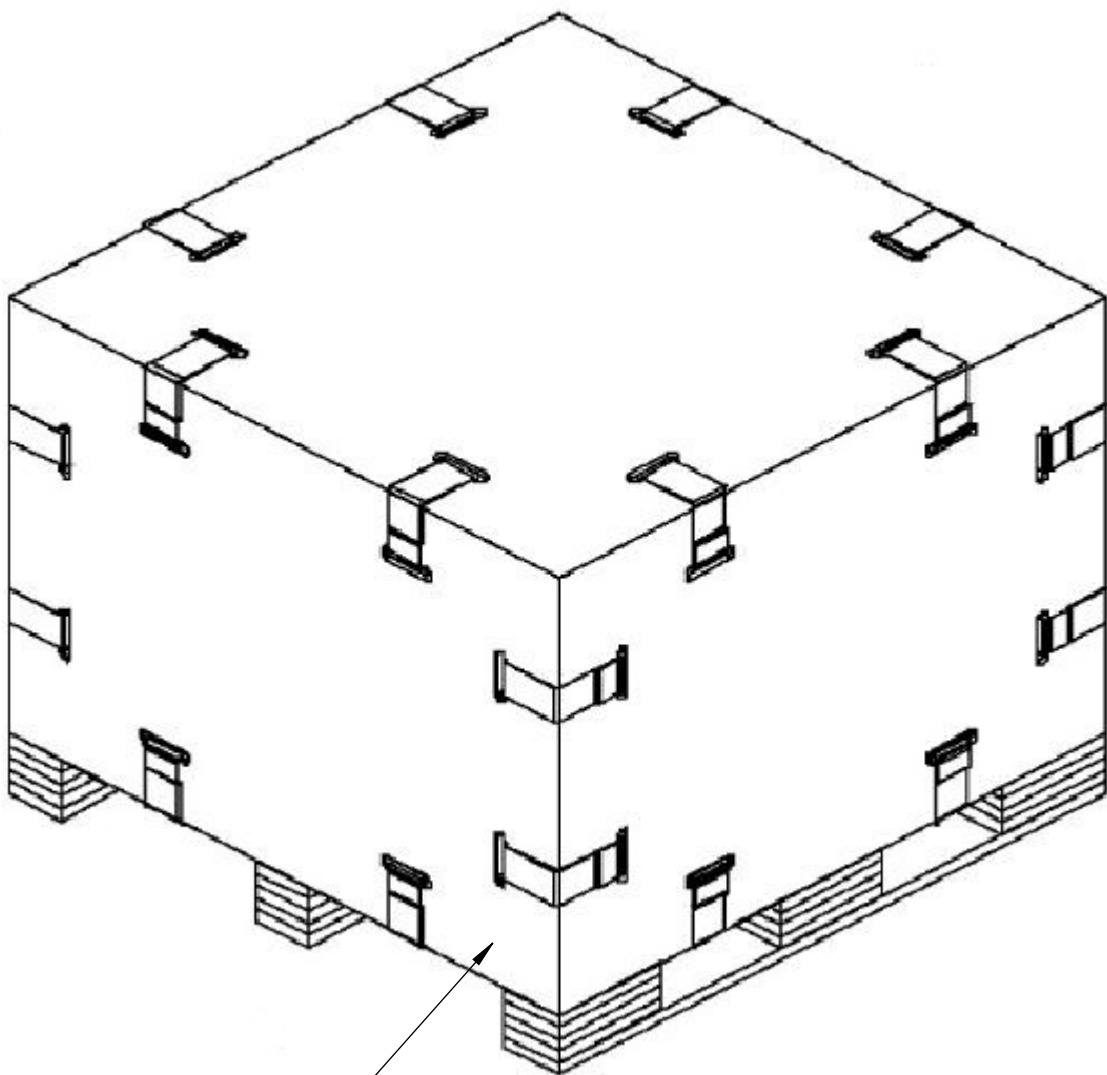
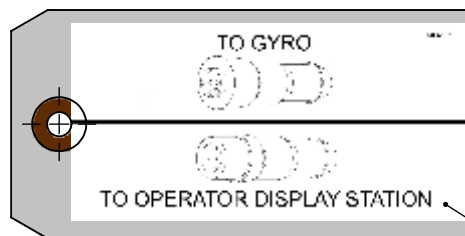


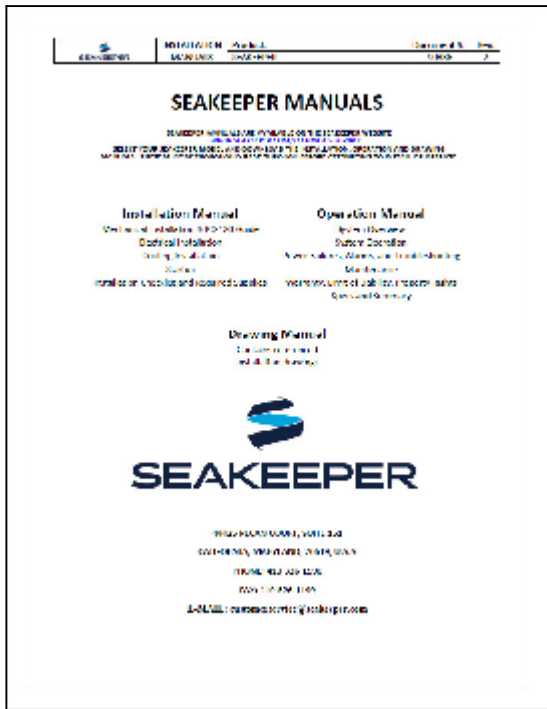
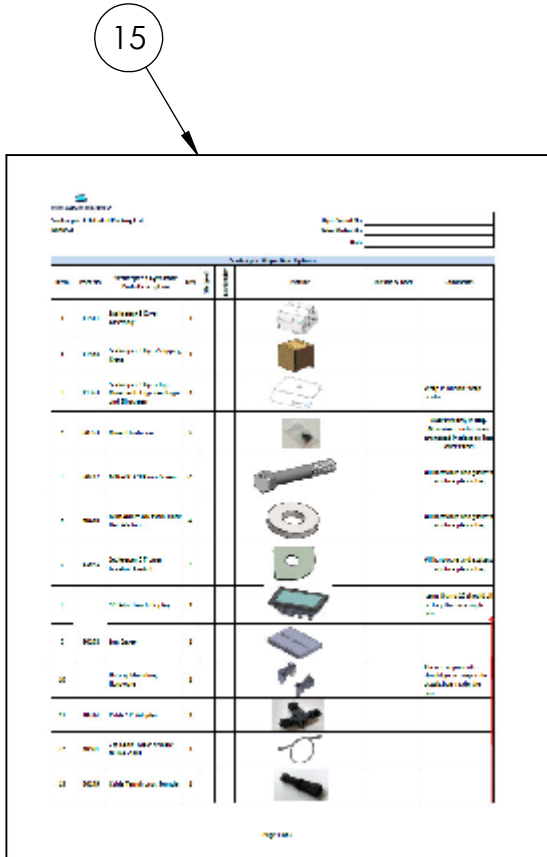
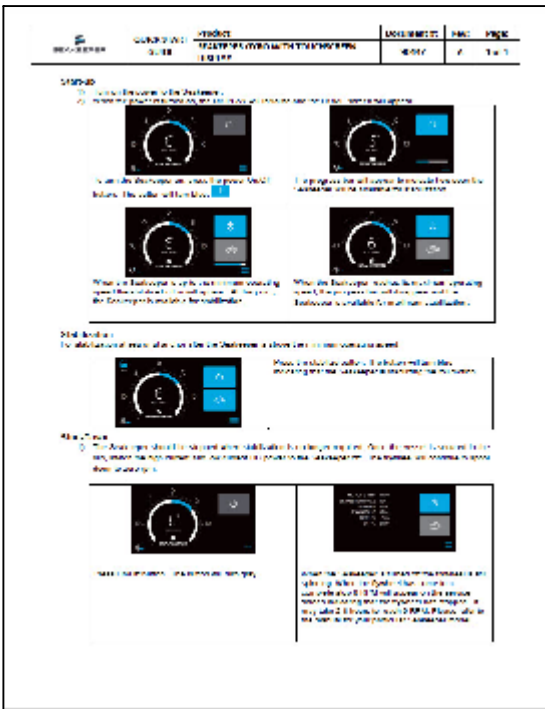
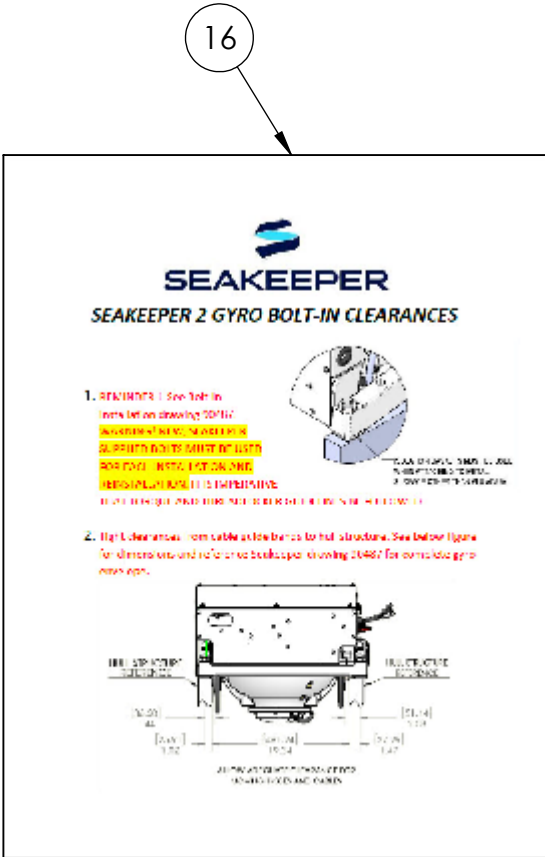
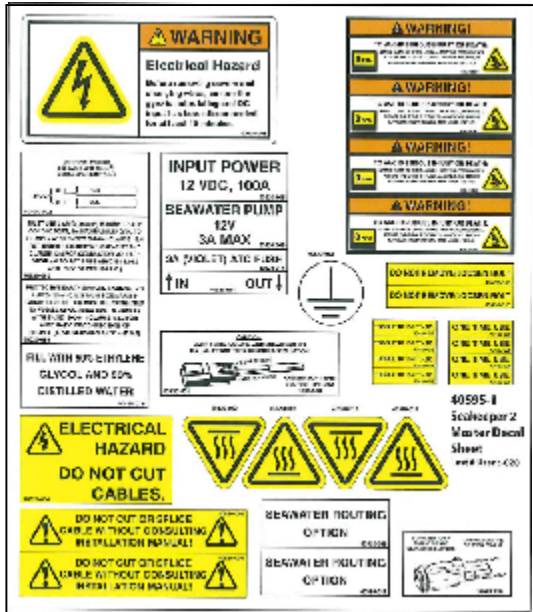
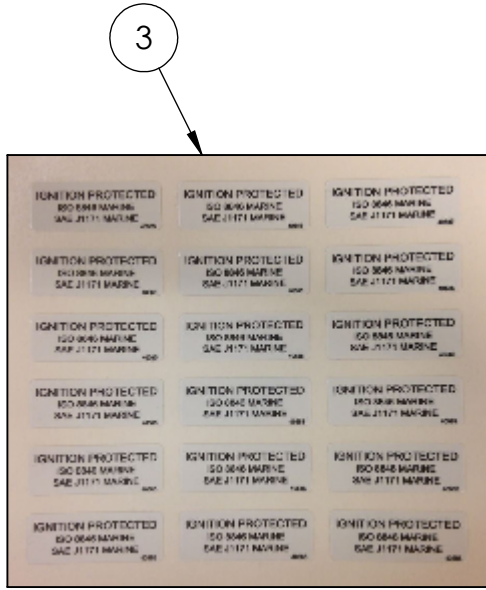
ITEMS NOT SHOWN TO SCALE



1 2 6 7 8 9 10 11
3 4



12 2



16	90492	SK2 BOLT-IN CLEARANCES	1	
15	90491	SK2 PACKING LIST	1	
14	90447	TOUCHSCREEN QUICK START GUIDE	1	
13	90336	SEAKEEPER ELECTRONIC MANUAL DOCUMENT	1	
12	90328	DISPLAY CABLE ORIENTATION TAG	1	
11	60684	TEE-NUT, 3/8-16 X .5" LG	4	
10	60682	3/8" FLAT WASHER, STEEL	4	
9	60681	HHCS, 3/8-16 X 4" LG, GR 5, ZNC	4	
8	60679	1/2" LAG SCREW, 7" LONG	4	
7	60678	3/8" FLAT WASHER, NYLON	4	
6	60359	1/2" FLAT WASHER, - STEEL	4	
5	40595	SK2 DECAL SHEET	1	
4	40594	SK2 SERIAL PLATE	1	
3	40585	IGNITION PROTECTED DECAL SHEET	1	
2	12270	SK2 COLLAPSABLE SHIPPING CRATE	1	
1	12136	SK2 QUICK CRATE COMPONENTS	1	

ITEM NO.	PART NO.	DESCRIPTION	QTY.	NOTE
SEAKEEPER 2 OTHERS SUB-SYSTEM				
11866				
4				
1 OF 1				

REV.	ECN NO.	ZONE	DESCRIPTION	DATE	APPROVED
1			RELEASED FOR PRODUCTION	03/02/2018	BEN
2	0695		ADDED DISPLAY CABLE ORIENTATION TAG	10/26/2018	SAC
3	0750		NOW USING COLLAPSABLE SHIPPING CRATE	5/16/2019	SAC
4	0792		STRUCTURAL IMPROVEMENTS MADE TO QUICK CRATE WITH NEW HARDWARE.	2/11/2020	BMK

SEAKEEPER
Seakeeper Inc. 45310 Abell House Lane, Suite 350 California, MD 20619

NAME: SEAKEEPER 2 OTHERS SUB-SYSTEM
DWG NUMBER: 11866
REV. NO. SHEET NO.: 4 1 OF 1

WEIGHT - LBS: ---
MATERIAL: ---
DRAWN: BEN
DATE: 02MAR2018
ENG APPR: ---
DATE: ---
PROD APPR: ---
DATE: ---

PROPRIETARY AND CONFIDENTIAL
THE INFORMATION CONTAINED IN THIS DRAWING IS THE SOLE PROPERTY OF SEAKEEPER INCORPORATED. ANY REPRODUCTION IN PART OR AS A WHOLE WITHOUT THE WRITTEN PERMISSION OF SEAKEEPER IS PROHIBITED.