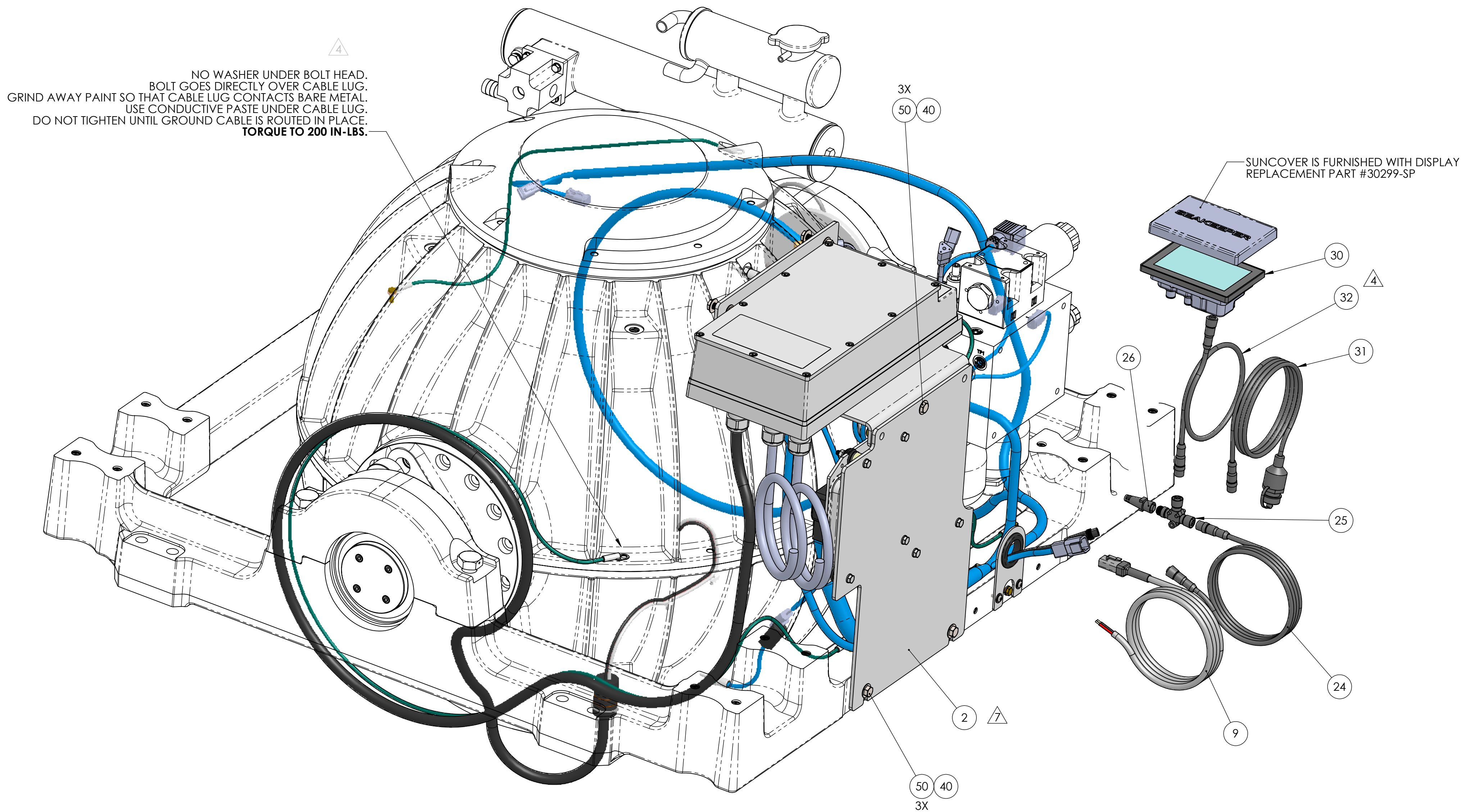


- 3) SOME ITEMS SHOWN ARE FOR BILL OF MATERIAL REFERENCE ONLY AND MAY NOT GET ASSEMBLED TO GYRO UNTIL INSTALLATION, THESE ITEMS WILL SHIP SEPARATELY.

| REV. | ECN NO. | ZONE     | DESCRIPTION  | DATE       | APPROVED |
|------|---------|----------|--|------------|----------|
| 1    | 0178    |          | RELEASED FOR PRODUCTION  | 9/24/2014  | WED      |
| 2    | 0248    |          | GYRO CONTROLLER DISPLAY AND SUNCOVER WAS UPGRADED  | 4/06/2015  | RSK      |
| 3    | 0324    |          | SEAKEEPER LOGO REBRANDING  | 6/8/2015   | SAC      |
| 4    | 0449    |          | CROUND GABLES CHANGED SIZE FROM 4AWG TO 10AWG. REMOVED INTERNAL TOOTH LOCK WASHER FROM UNDER GROUND LOGO | 10/10/2016 | SAC      |
| 5    | 0497    | B5_SHT 2 | O-RINGS AND RETAINER CLIP FOR MOTOR FEEDTHRU WAS ADDED TO BOM LIST, NOW SUPPLIED BY SEAKEEPER            | 2/3/2017   | SAC      |
| 6    | 0480    |          | SENSATA BRAND VACUUM SENSOR WAS REPLACED WITH WASCO BRAND SENSOR   | 4/11/2017  | SAC      |
| 7    | 0525    |          | ECU #30234 WAS REPLACED WITH A PROGRAMABLE VERSION WITH SECURITY FEATURES, #30302                        | 5/17/2017  | SAC      |
| 4    | 0521    |          | NEW 5" TOUCH SCREEN DISPLAY IS NOW FURNISHED WITH GYRO   | 10/16/2017 | SAC      |



|          |          |   |                 |      |      |
|----------|----------|---|-----------------|------|------|
| 61       | 70061    | THERMAL JOINT COMPOUND - WAKEFIELD TYPE 120           | ----            | AR   |      |
| 60       | 70054    | THREAD LOCKER, LOC-TITE #243, BLUE                    | ----            | AR   |      |
| 59       | 60278    | HEX HD CAP SCREW,M6-1.0 X 16mm LG, FULL THREAD        | BRASS           | 5    |      |
| 58       | 60267    | HEX NUT, NYLOK M8-1.2 SS                              | 316 SS          | 2    |      |
| 57       | 60262    | SCREW, HEX HD CAP, M6-1.0 X 30mm LG                   | 316 SS          | 2    |      |
| 56       | 60260    | STAND OFF, NYLON, .31X.75X.5                          | NYLON           | 4    |      |
| 55       | 60259    | BTN SKT HD MACHINE SCREW M5-.8 X 12mm LG              | 18-8 SS         | 5    |      |
| 54       | 60258    | HHCS M6-1.0 X 45mm LG                                 | 316 SS          | 4    |      |
| 53       | 60256    | HEX HEAD CAP SCREW, M6-1.0 X 16mm LG                  | 316 SS          | 4    |      |
| 52       | 60255    | HEX NUT, NYLOK M6-1.0                                 | 316 SS          | 6    |      |
| 51       | 60247    | HEX HD CAP SCREW M8-1.25 X 40mm LG 316SS              | 316SS           | 2    |      |
| 50       | 60246    | HEX HD CAP SCREW M8-1.25 X 20mm LG. 316SS             | 316SS           | 3    |      |
| 49       | 60223    | WASHER, FLAT, M6 12MM OD                              | 316SS           | 16   |      |
| 48       | 60096    | WASHER, SPLIT LOC. .25 ID                             | SILICON BRONZE  | 5    |      |
| 47       | 60087    | SCREW, PHILLIPS HD PAN 8-32 X 0.38                    | 18-8 SS         | 2    |      |
| 46       | 60038    | FLAT WASHER, M4                                       | 18-8 SS         | 2    |      |
| 45       | 60037    | SPRING LOCK WASHER, M4                                | 18-8 SS         | 2    |      |
| 44       | 60034    | SCREW, SOCKET HD CAP M4-.7 X 16MM FULL TD             | 18-8SS          | 2    |      |
| 43       | 60033    | FLAT WASHER #10                                       | 316SS           | 5    |      |
| 42       | 60017    | SKT HD CAP SCREW. #10-24 X 2.25 LG                    | ALLOY STEEL     | 8    |      |
| 41       | 60015    | WASHER, HI COLLAR LOC #10                             | ALLOY STEEL     | 8    |      |
| 40       | 60003    | WASHER, FLAT TYPE B NARROW 0.31                       | 316 SS          | 7    |      |
| 39       | 40367    | GROMMET, PUSH IN 1-1/4 ID X 3/32 PANEL THKNSS.        | SBR RUBBER      | 1    |      |
| 38       | 40366    | MOTOR DRIVE COVER LABEL                               | ANODIZED ALUM.  | 1    |      |
| 37       | 40250    | SILI-THANE 803 MARINE SEALANT                         | ----            | AR   |      |
| 36       | 40208    | CABLE TIE MOUNT, PLASTIC, #8 SCREW                    | PLASTIC         | 2    |      |
| 35       | 40142    | O-RING, SIZE O24 A75 DUROMETER                        | VITON           | 2    |      |
| 34       | 40107    | RETAINING RING, EXTERNAL, 1.25 DIA                    | SS              | 1    |      |
| 33       | 30302    | ECU ASSEMBLY WITH BOOT LOAD SECURITY                  | ----            | 1    |      |
| 32       | 30301    | CABLE, 2FT. MALE/FEMALE, NMEA 2000 PLASTIC MICRO      | ----            | 1    |      |
| 31       | 30300    | CABLE, M12 12 PIN MALE TO USB-A RECEPTACLE            | ----            | 1    |      |
| 30       | 30298    | 5 INCH TOUCH DISPLAY, GYRO CONTROLLER                 | ----            | 1    |      |
| 29       | 30288    | VACUUM SENSOR, WASCO                                  | BRASS           | 1    |      |
| 28       | 30255    | RING TERMINAL, 16-14 GA SIZE #8 INSULATED, BLUE       | ----            | 1    |      |
| 27       | 30254    | RING TERMINAL, 12-10 GA SIZE #8 INSULATED, YELLOW     | ----            | 1    |      |
| 26       | 30249    | TERMINATOR, NMEA 2000 MICRO, 120OHM FEMALE            | PLASTIC         | 1    |      |
| 25       | 30244    | DISPLAY CABLE T- ADAPTOR                              | ----            | 1    |      |
| 24       | 30243    | CABLE, MALE/FEMALE, NMEA 2000 PLASTIC MICRO, 25M LG.  | ----            | 1    |      |
| 23       | 30242    | FERRULE 12 AWG, .47" PIN LENGTH                       | ----            | 3    |      |
| 22       | 30241    | POWER RELAY   | ----            | 1    |      |
| 21       | 30240    | FERRULE 14 AWG, .47" PIN LENGTH                       | ----            | 2    |      |
| 20       | 30239    | MARINE GRADE ELECTRICAL CABLE, 14-3 SEAWATER PUMP     | ----            | 1    |      |
| 19       | 30235    | THERMISTOR, GE WTS 1797                               | 316 SS          | 2    |      |
| 18       | 30197    | FERRULE 10 AWG, .47" PIN LENGTH                       | ----            | 2    |      |
| 17       | 30179    | MARINE GRADE ELECTRICAL CABLE, 10-3 AC POWER          | ----            | 1    |      |
| 16       | 30016    | LARGE CLICK BOND WIRE TIE ANCHOR                      | COMPOSITE       | 3    |      |
| 15       | 30015    | SMALL CLICK BOND WIRE TIE ANCHOR                      | COMPOSITE       | 3    |      |
| 14       | 30003    | POSITION MARKER                                       | ----            | 1    |      |
| 13       | 20254    | SEAKEEPER 16 FLYWHEEL MOTOR, ROTOR ASSEMBLY           | ----            | 1    |      |
| 12       | 20252    | SEAKEEPER 16 GROUND CABLE ASSEMBLY, 25-1/2"           | ----            | 1    |      |
| 11       | 20251    | SEAKEEPER 16 SPHERE GROUND CABLE ASSEMBLY, 4 AWG, 69" | ----            | 1    |      |
| 10       | 20249    | SEAKEEPER 16 WIRE HARNESS                             | ----            | 1    |      |
| 9        | 20248    | GYRO DC INPUT POWER CABLE ASSEMBLY, 5M LG.            | ----            | 1    |      |
| 8        | 20222    | GIMBAL ANGLE SENSOR & CONNECTOR ASSEMBLY              | ----            | 1    |      |
| 7        | 20216    | SEAKEEPER MOTOR DRIVE BOX                             | ALUMINUM        | 1    |      |
| 6        | 20213    | SEAKEEPER 16 FLYWHEEL MOTOR, STATOR ASSEMBLY          | ----            | 1    |      |
| 5        | 20206    | CAN IMU ASSEMBLY                                      | ----            | 1    |      |
| 4        | 11165    | SEAKEEPER 16 CABLE BULKHEAD PLATE                     | .100 ALUM SHT.  | 1    |      |
| 3        | 11109    | SEAKEEPER 16 MOTOR DRIVE BOX MOUNT                    | .18 ALUM. SHEET | 1    |      |
| 2        | 11101    | SEAKEEPER 16 ELECTRICAL COMPONENT PANEL               | .18 ALUM. SHEET | 1    |      |
| 1        | 11050    | SEAKEEPER 16 ANGLE SENSOR MOUNT FINISH MACHINED       | CAST ALUM       | 1    |      |
| ITEM NO. | PART NO. | DESCRIPTION   | MATERIAL        | QTY. | NOTE |

**PROPRIETARY AND CONFIDENTIAL**

THE INFORMATION CONTAINED IN THIS  
DRAWING IS THE SOLE PROPERTY OF  
SEAKEEPER INCORPORATED. ANY  
REPRODUCTION IN PART OR AS A WHOLE  
WITHOUT THE WRITTEN PERMISSION OF  
SEAKEEPER IS PROHIBITED.



Seakeeper Inc. 44425 Pecan Court, Suite 151 California, MD 20619

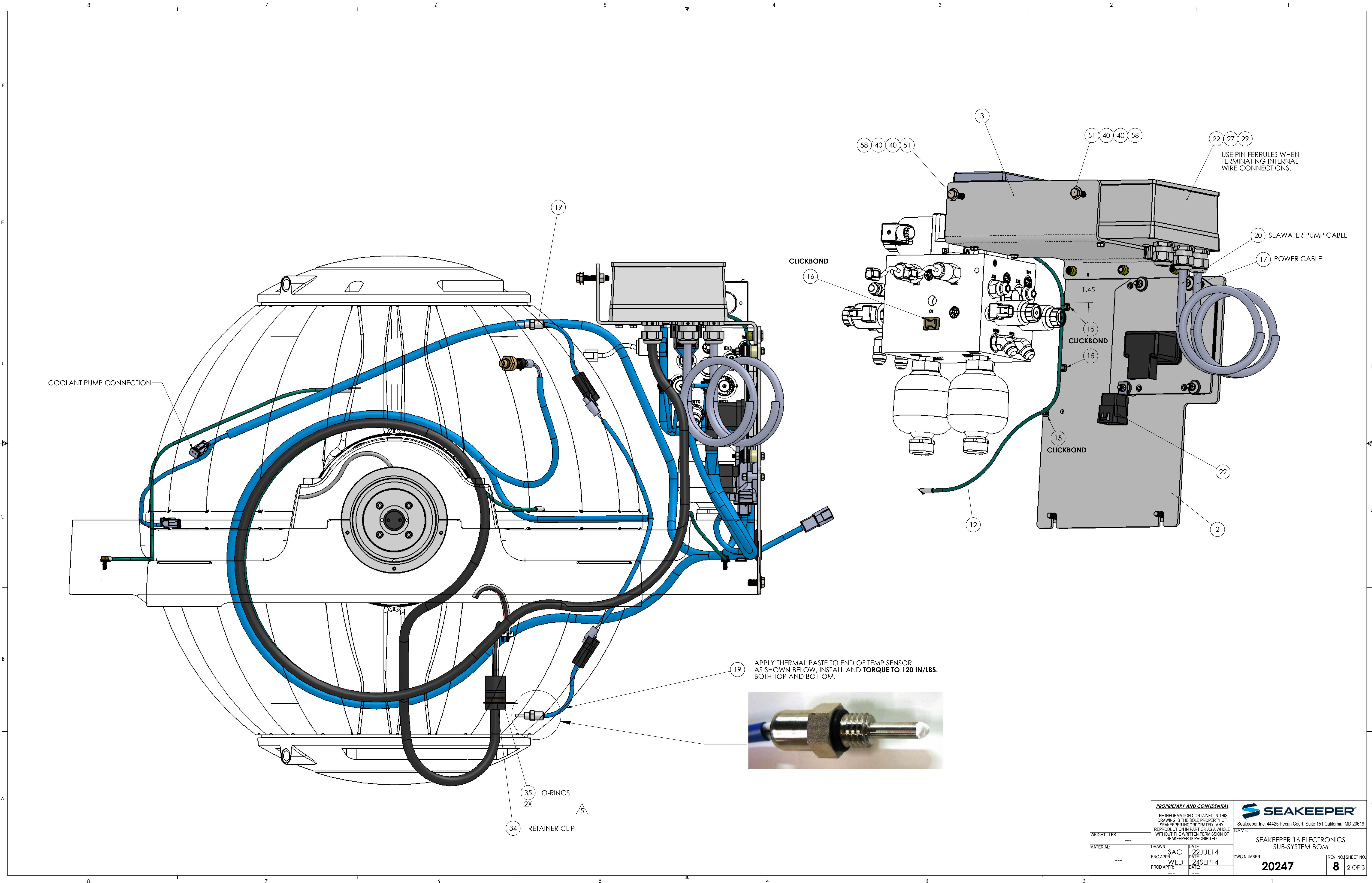
SEAKEEPER 16 ELECTRONICS  
SUB-SYSTEM BOM

|            |          |           |
|------------|----------|-----------|
| FIG NUMBER | REV. NO. | SHEET NO. |
|------------|----------|-----------|

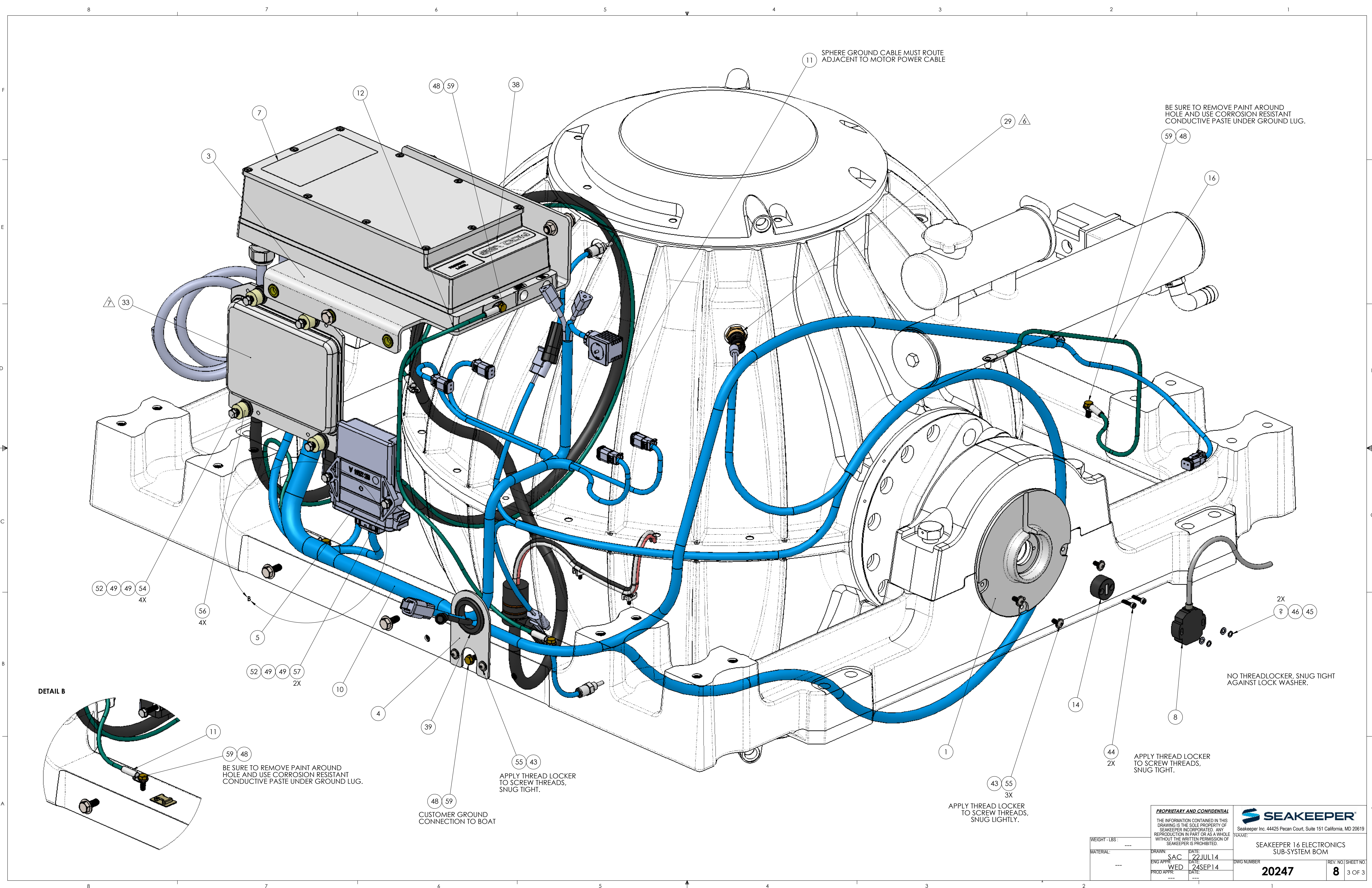
20247 8 1 OF 3

|  |  |  |  |
|--|--|--|--|
|  |  |  |  |
|--|--|--|--|









11 SPHERE GROUND CABLE MUST ROUTE ADJACENT TO MOTOR POWER CABLE

BE SURE TO REMOVE PAINT AROUND HOLE AND USE CORROSION RESISTANT CONDUCTIVE PASTE UNDER GROUND LUG.

NO THREADLOCKER, SNUG TIGHT AGAINST LOCK WASHER.

APPLY THREAD LOCKER TO SCREW THREADS, SNUG TIGHT.

APPLY THREAD LOCKER TO SCREW THREADS, SNUG LIGHTLY.

APPLY THREAD LOCKER TO SCREW THREADS, SNUG TIGHT.

BE SURE TO REMOVE PAINT AROUND HOLE AND USE CORROSION RESISTANT CONDUCTIVE PASTE UNDER GROUND LUG.

CUSTOMER GROUND CONNECTION TO BOAT

DETAIL B

PROPRIETARY AND CONFIDENTIAL  
THE INFORMATION CONTAINED IN THIS DRAWING IS THE SOLE PROPERTY OF SEAKEEPER INCORPORATED. ANY REPRODUCTION IN PART OR AS A WHOLE WITHOUT THE WRITTEN PERMISSION OF SEAKEEPER IS PROHIBITED.

**SEAKEEPER**  
Seakeeper Inc. 44425 Pecan Court, Suite 151 California, MD 20619

SEAKEEPER 16 ELECTRONICS  
SUB-SYSTEM BOM

20247

REV. NO. | SHEET NO.  
8 | 3 OF 3

WEIGHT - LBS : ---

MATERIAL : ---

DRAWN : SAC DATE: 22 JUL 14

ENG APPR : WED DATE: 24 SEP 14

PROD APPR : --- DATE: ---

DWG NUMBER

REV. NO. | SHEET NO.