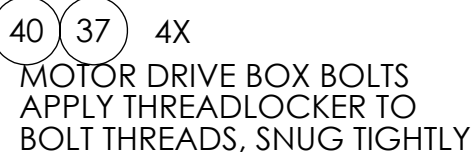
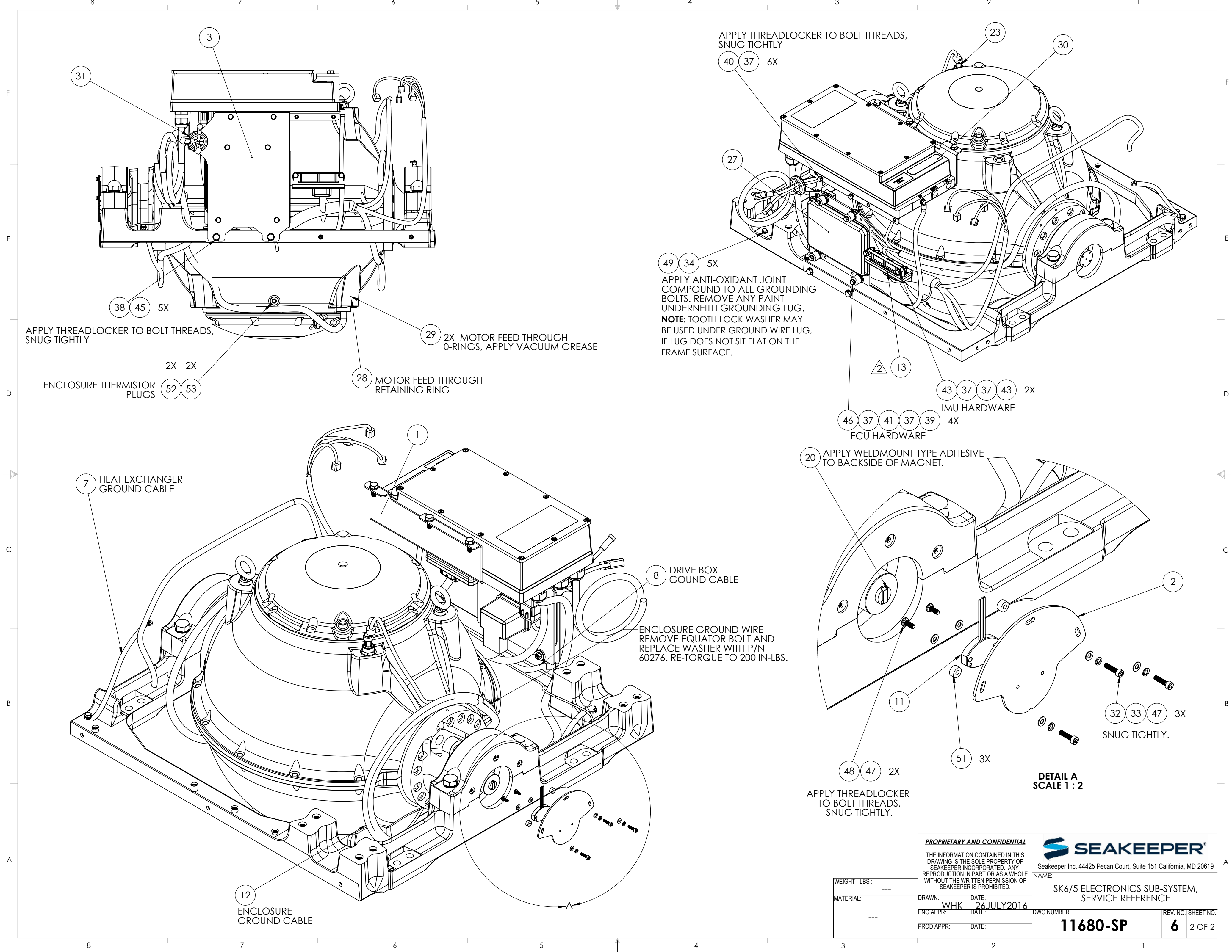


2) ITEMS SHOWN IN PHANTOM ARE FOR REFERENCE ONLY. THESE REFERENCE ITEMS ARE PART OF OTHER SUB-GROUPS AND ARE DISPLAYED IN THIS DWG TO SHOW WIRE HARNESS CONNECTION POINTS.



57	70078	ANTI-OXIDANT COMPOUND	AR
56	70054	THREADLOCKER, LOCTITE #243, BLUE	AR
55	70001	VACUUM GREASE	AR
54	60494	SCREW, HEX HD FLANGE, 10-32 X .375	2
53	60485	SCREW, BUTTON HD SKT CAP, M10-1.5 X 16MM LG	2
52	60484	WASHER, FLAT, .75OD X .375ID X .062THK	2
51	60476	STANDOFF, ROUND, M4 X 10MM OD, 5MM LG	3
50	60440	SCREW, SOCKET HD CAP M6-1.0 X 22MM PART TD	6
49	60352	SCREW, HEX HD CAP M6-1.0 X 12MM FULL TD	5
48	60344	SCREW, PHILLIPS HD PAN M4-.7 X 10MM FULL TD	2
47	60343	WASHER, FLAT DIN125 M4	7
46	60335	SCREW, HEX HD CAP M6-1.0 X 40MM FULL TD	4
45	60330	WASHER, FLAT DIN125 M8	5
44	60329	WASHER, HI COLLAR LOC DIN7980 M6	6
43	60321	SCREW, HEX HD CAP M6-1.0 X 25MM FULL TD	2
42	60276	INTERNAL TOOTH LOCK WASHER, 5/16" SCREW SIZE	1
41	60260	STAND OFF, NYLON, .31X.75X.5	4
40	60256	HEX HEAD CAP SCREW, M6-1.0 X 16mm LG	6
39	60255	HEX NUT, NYLOK M6-1.0	6
38	60246	HEX HD CAP SCREW M8-1.25 X 20mm LG. 316SS	5
37	60223	WASHER, FLAT, M6 12MM OD	18
36	60177	SCREW, PHILLIPS HD PAN 8-32 X 0.63	1
35	60161	NUT, NYLOCK HEX 8-32	1
34	60096	WASHER, SPLIT LOC .25 ID	5
33	60037	SPRING LOCK WASHER, M4	3
32	60034	SCREW, SOCKET HD CAP M4-.7 X 16MM FULL TD	3
31	40398	GROMMET, PUSH-IN 1" ID x .125" PANEL THK	1
30	40366	MOTOR DRIVE COVER LABEL	1
29	40142	O-RING, SIZE 024 A75 DUROMETER	2
28	40107	RETAINING RING, EXTERNAL, 1.25 DIA	1
27	30302	ECU ASSEMBLY WITH BOOT LOAD SECURITY	1
26	30301	CABLE, MALE/FEMALE, NMEA 2000 PLASTIC MICRO	1
25	30300	6FT USB EXTENSION CABLE	1
24	30298	5 INCH TOUCH DISPLAY, GYRO CONTROLLER	1
23	30288	VACUUM SENSOR, WASCO	1
22	30259	12VDC POWER RELAY	1
21	30249	TERMINATOR, NMEA 2000 MICRO, 120OHM FEMALE	1
20	30248	POSITION MARKER (MAGNET ONLY)	1
19	30246	AMPHENOL LTW PLASTIC CAP, MALE	1
18	30244	DISPLAY CABLE T- ADAPTOR	1
17	30243	CABLE, MALE/FEMALE, NMEA 2000 PLASTIC MICRO, 25M LG.	1
16	20395	AC OUTPUT POWER 14/3 CABLE ASSEMBLY	1
15	20394	AC INPUT POWER 10/3 CABLE ASSEMBLY	2
14	20444	SK6 WIRING HARNESS, RECTIFIED MANIFOLD	1
13	20350	CAN IMU VERSION 2	1
12	20338	GROUND CABLE, 10AWG, 43.5"	1
11	20330	SMALL MODEL GYRO GIMBAL ANGLE SENSOR	1
10	20248	GYRO DC INPUT POWER CABLE ASSEMBLY, 5M LG.	1
9	20243	SK5 MOTOR ROTOR	1
8	20241	GROUND CABLE, 10AWG, 22"	1
7	20228	GROUND CABLE, 10AWG, 13"	1
6	20216	SEAKEEPER MOTOR DRIVE BOX	1
5	20211	SK5 FLYWHEEL MOTOR	1
4	12370	SK6 FLYWHEEL WIRE GUARD	1
3	12165	SK6 ECU PANEL, RECTIFIED MANIFOLD	1
2	11657	SK6 ANGLE SENSOR MOUNT	1
1	11112	SK5 ELECTRONICS BRACKET, MOTOR DRIVE BOX	1
ITEM NO.	PART NUMBER	DESCRIPTION	QTY.

DWG NUMBER	REV. NO.	SHEET NO.
11680-SP	6	1 OF 2



APPLY THREADLOCKER TO BOLT THREADS,
SNUG TIGHTLY

ENCLOSURE THERMISTOR
PLUGS

2X 2X

28 MOTOR FEED THROUGH
RETAINING RING

29 2X MOTOR FEED THROUGH
O-RINGS, APPLY VACUUM GREASE

APPLY THREADLOCKER TO BOLT THREADS,
SNUG TIGHTLY

APPLY ANTI-OXIDANT JOINT
COMPOUND TO ALL GROUNDING
BOLTS. REMOVE ANY PAINT
UNDERNEATH GROUNDING LUG.
NOTE: TOOTH LOCK WASHER MAY
BE USED UNDER GROUND WIRE LUG,
IF LUG DOES NOT SIT FLAT ON THE
FRAME SURFACE.

APPLY WELDMOUNT TYPE ADHESIVE
TO BACKSIDE OF MAGNET.

APPLY THREADLOCKER
TO BOLT THREADS,
SNUG TIGHTLY.

DETAIL A
SCALE 1 : 2

PROPRIETARY AND CONFIDENTIAL

THE INFORMATION CONTAINED IN THIS
DRAWING IS THE SOLE PROPERTY OF
SEAKEEPER INCORPORATED. ANY
REPRODUCTION IN PART OR AS A WHOLE
WITHOUT THE WRITTEN PERMISSION OF
SEAKEEPER IS PROHIBITED.

SEAKEEPER
Seakeeper Inc. 44425 Pecan Court, Suite 151 California, MD 20619

NAME: SK6/5 ELECTRONICS SUB-SYSTEM,
SERVICE REFERENCE

DWG NUMBER
11680-SP

REV. NO. SHEET NO.
6 2 OF 2

WEIGHT - LBS :

MATERIAL:

DRAWN:

DATE: 26 JULY 2016

ENG APPR:

DATE:

PROD APPR:

DATE: