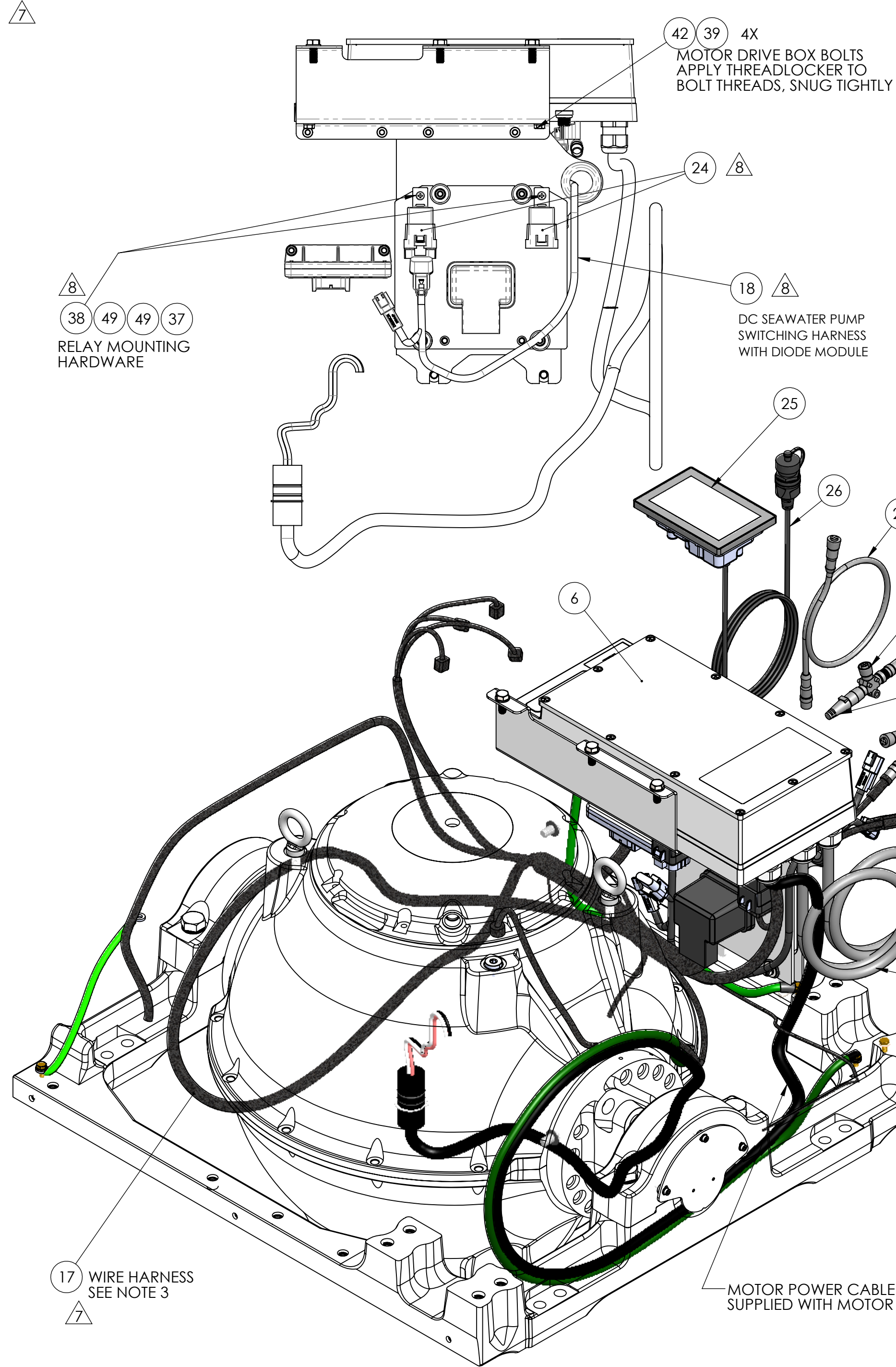


NOTES:

- 1) THIS DWG. REPRESENTS A SUB-GROUP OF COMPONENTS WITHIN THE SK6/5 ELECTRONICS SYSTEM BILL OF MATERIAL AND DOES NOT NECESSARILY REPRESENT THE ACTUAL ASSEMBLY PROCEDURE. THIS DWG DOES PROVIDE TECHNICAL INFORMATION REGARDING COMPONENT LOCATION, SUGGESTED WIRE HARNESS ROUTING, AND FASTENER APPLICATION.
- 2) ITEMS SHOWN IN PHANTOM ARE FOR REFERENCE ONLY. THESE REFERENCE ITEMS ARE PART OF OTHER SUB-GROUPS AND ARE DISPLAYED IN THIS DWG TO SHOW WIRE HARNESS CONNECTION POINTS.
- 3) FOLLOW PWI-0038, CHANGES TO ELIMINATE VACUUM PRESSURE SENSOR, #30288 AND MODIFIED WIRE HARNESS.



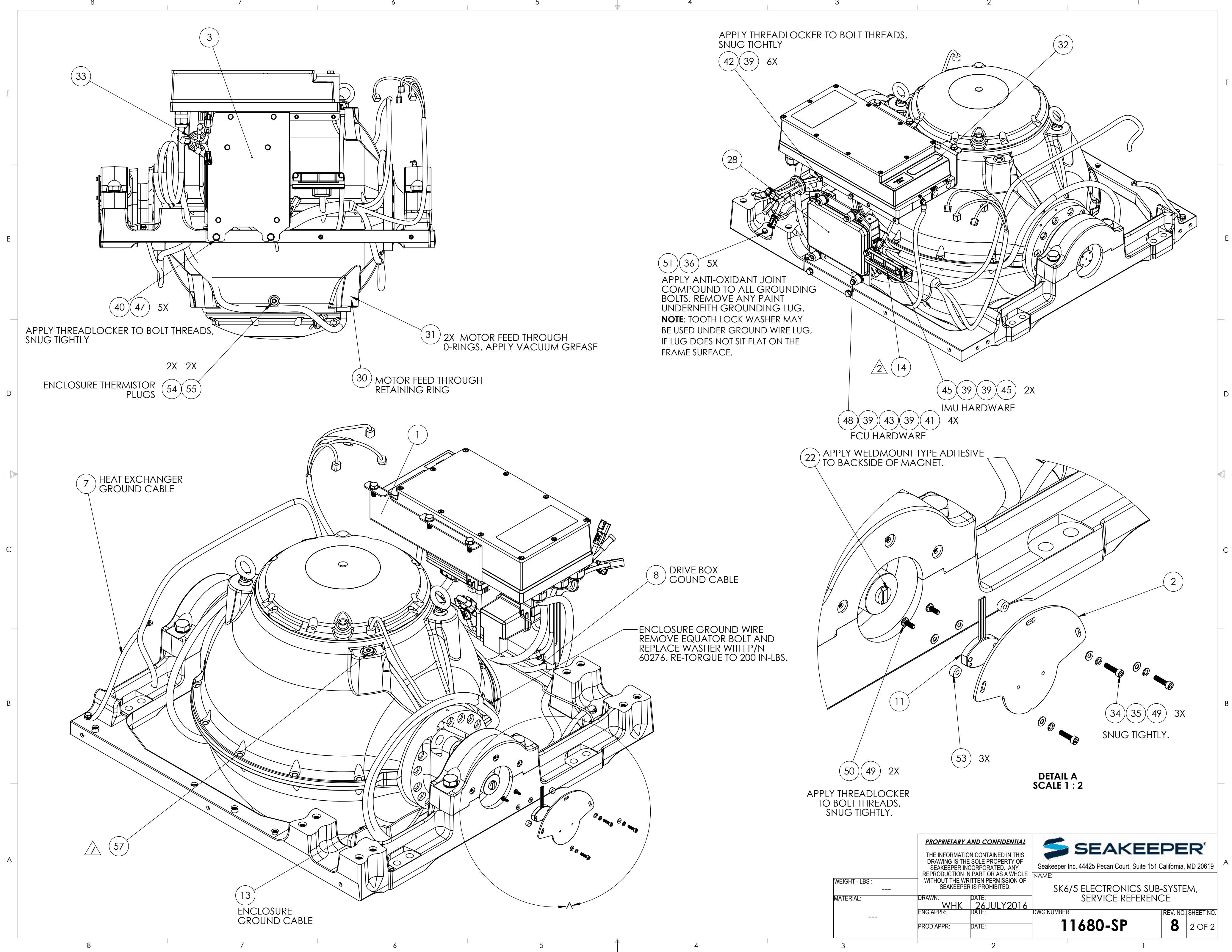
REV NO.	ECN NO.	ZONE	DESCRIPTION	DATE	APPRVD.
2	639	SHT 2, D3	REPLACED 20206 WITH 20350	16JUL2018	EMS
2.1			REPLACED 30247 WITH 30246.	2/7/2019	BRD
3	759		ADD FLYWHEEL GUARD.	10/8/2019	EMS
4	697		NEW WIRE HARNESS AND SHT METAL FOR RECT. MANIFOLD.	12/10/2019	EMS
5	800		NEW FLYWHEEL GUARD.	1/17/2020	EMS
6	0830		REPLACED 30179, MARINE GRADE ELECTRICAL CABLE, 10-3 AC POWER WITH ITEM #15, 20394, AC INPUT POWER 10/3 CABLE ASSEMBLY; AND REPLACED 30239, MARINE GRADE ELECTRICAL CABLE, 14-3 SEAWATER PUMP WITH ITEM #16, 20395, AC OUTPUT POWER 14/3 CABLE ASSEMBLY	6/18/2020	WMG
7	0841		REPLACED WASCO VACUUM PRESSURE SENSOR, 30288 WITH ORB HEX SOCKET O-RING BOSS PLUG, 60760 AND ADDED NOTE #3	8/12/2020	WMG
8	0845		ADDED (1X) 30259, 12V DC, RELAY, (1X) 20460, DC SEAWATER PUMP WIRE HARNESS AND HARDWARE, (1X) 20334, SEAWATER PUMP DC POWER CABLE ASSEMBLY, 5M LG. AND (1X) 30327, SEAWATER PUMP DC POWER CABLE ASSEMBLY, 5M MFLG.	11/9/2020	WMG

60	70078	ANTI-OXIDANT COMPOUND	AR
59	70054	THREADLOCKER, LOCTITE #243, BLUE	AR
58	70001	VACUUM GREASE	AR
57	60760	ORB HEX SOCKET O-RING BOSS PLUG, 316 SS	1
56	60494	SCREW, HEX HD FLANGE, 10-32 X .375	2
55	60485	SCREW, BUTTON HD SKT CAP, M10-1.5 X 16MM LG	2
54	60484	WASHER, FLAT, .75OD X .375ID X .062THK	2
53	60476	STANDOFF, ROUND, M4 X 10MM OD, 5MM LG	3
52	60440	SCREW, SOCKET HD CAP M6-1.0 X 22MM PART TD	6
51	60352	SCREW, HEX HD CAP M6-1.0 X 12MM FULL TD	5
50	60344	SCREW, PHILLIPS HD PAN M4-.7 X 10MM FULL TD	2
49	60343	WASHER, FLAT DIN125 M4	9
48	60335	SCREW, HEX HD CAP M6-1.0 X 40MM FULL TD	4
47	60330	WASHER, FLAT DIN125 M8	5
46	60329	WASHER, HI COLLAR LOC DIN7980 M6	6
45	60321	SCREW, HEX HD CAP M6-1.0 X 25MM FULL TD	2
44	60276	INTERNAL TOOTH LOCK WASHER, 5/16" SCREW SIZE	1
43	60260	STAND OFF, NYLON, .31X.75X.5	4
42	60256	HEX HEAD CAP SCREW, M6-1.0 X 16mm LG	6
41	60255	HEX NUT, NYLOK M6-1.0	6
40	60246	HEX HD CAP SCREW M8-1.25 X 20mm LG. 316SS	5
39	60223	WASHER, FLAT, M6 12MM OD	18
38	60177	SCREW, PHILLIPS HD PAN 8-32 X 0.63	2
37	60161	NUT, NYLOCK HEX 8-32	2
36	60096	WASHER, SPLIT LOC .25 ID	5
35	60037	SPRING LOCK WASHER, M4	3
34	60034	SCREW, SOCKET HD CAP M4-.7 X 16MM FULL TD	3
33	40398	GROMMET, PUSH-IN 1" ID x .125" PANEL THK	1
32	40366	MOTOR DRIVE COVER LABEL	1
31	40142	O-RING, SIZE 024 A75 DUROMETER	2
30	40107	RETAINING RING, EXTERNAL, 1.25 DIA	1
29	30327	SEAWATER PUMP DC POWER CABLE ASSEMBLY, 5M MFLG.	1
28	30302	ECU ASSEMBLY WITH BOOT LOAD SECURITY	1
27	30301	CABLE, MALE/FEMALE, NMEA 2000 PLASTIC MICRO	1
26	30300	6FT USB EXTENSION CABLE	1
25	30298	5 INCH TOUCH DISPLAY, GYRO CONTROLLER	1
24	30259	12VDC POWER RELAY	2
23	30249	TERMINATOR, NMEA 2000 MICRO, 120OHM FEMALE	1
22	30248	POSITION MARKER (MAGNET ONLY)	1
21	30246	AMPHENOL LTW PLASTIC CAP, MALE	1
20	30244	DISPLAY CABLE T- ADAPTOR	1
19	30243	CABLE, MALE/FEMALE, NMEA 2000 PLASTIC MICRO, 25M LG.	1
18	20460	SEAKEEPER 6/9 DC SEAWATER PUMP SWITCHING HARNESS WITH DIODE MODULE	1
17	20444	SK6 WIRING HARNESS, RECTIFIED MANIFOLD	1
16	20395	AC OUTPUT POWER 14/3 CABLE ASSEMBLY	1
15	20394	AC INPUT POWER 10/3 CABLE ASSEMBLY	1
14	20350	CAN IMU VERSION 2	1
13	20338	GROUND CABLE, 10AWG, 43.5"	1
12	20334	SEAWATER PUMP DC POWER CABLE ASSEMBLY, 5M LG.	1
11	20330	SMALL MODEL GYRO GIMBAL ANGLE SENSOR	1
10	20248	GYRO DC INPUT POWER CABLE ASSEMBLY, 5M LG.	1
9	20243	SK5 MOTOR ROTOR	1
8	20241	GROUND CABLE, 10AWG, 22"	1
7	20228	GROUND CABLE, 10AWG, 13"	1
6	20216	SEAKEEPER MOTOR DRIVE BOX	1
5	20211	SK5 FLYWHEEL MOTOR	1
4	12370	SK6 FLYWHEEL WIRE GUARD	1
3	12165	SK6 ECU PANEL, RECTIFIED MANIFOLD	1
2	11657	SK6 ANGLE SENSOR MOUNT	1
1	11112	SK5 ELECTRONICS BRACKET, MOTOR DRIVE BOX	1

ITEM NO.	PART NUMBER	DESCRIPTION	QTY.
60	70078	ANTI-OXIDANT COMPOUND	AR
59	70054	THREADLOCKER, LOCTITE #243, BLUE	AR
58	70001	VACUUM GREASE	AR
57	60760	ORB HEX SOCKET O-RING BOSS PLUG, 316 SS	1
56	60494	SCREW, HEX HD FLANGE, 10-32 X .375	2
55	60485	SCREW, BUTTON HD SKT CAP, M10-1.5 X 16MM LG	2
54	60484	WASHER, FLAT, .75OD X .375ID X .062THK	2
53	60476	STANDOFF, ROUND, M4 X 10MM OD, 5MM LG	3
52	60440	SCREW, SOCKET HD CAP M6-1.0 X 22MM PART TD	6
51	60352	SCREW, HEX HD CAP M6-1.0 X 12MM FULL TD	5
50	60344	SCREW, PHILLIPS HD PAN M4-.7 X 10MM FULL TD	2
49	60343	WASHER, FLAT DIN125 M4	9
48	60335	SCREW, HEX HD CAP M6-1.0 X 40MM FULL TD	4
47	60330	WASHER, FLAT DIN125 M8	5
46	60329	WASHER, HI COLLAR LOC DIN7980 M6	6
45	60321	SCREW, HEX HD CAP M6-1.0 X 25MM FULL TD	2
44	60276	INTERNAL TOOTH LOCK WASHER, 5/16" SCREW SIZE	1
43	60260	STAND OFF, NYLON, .31X.75X.5	4
42	60256	HEX HEAD CAP SCREW, M6-1.0 X 16mm LG	6
41	60255	HEX NUT, NYLOK M6-1.0	6
40	60246	HEX HD CAP SCREW M8-1.25 X 20mm LG. 316SS	5
39	60223	WASHER, FLAT, M6 12MM OD	18
38	60177	SCREW, PHILLIPS HD PAN 8-32 X 0.63	2
37	60161	NUT, NYLOCK HEX 8-32	2
36	60096	WASHER, SPLIT LOC .25 ID	5
35	60037	SPRING LOCK WASHER, M4	3
34	60034	SCREW, SOCKET HD CAP M4-.7 X 16MM FULL TD	3
33	40398	GROMMET, PUSH-IN 1" ID x .125" PANEL THK	1
32	40366	MOTOR DRIVE COVER LABEL	1
31	40142	O-RING, SIZE 024 A75 DUROMETER	2
30	40107	RETAINING RING, EXTERNAL, 1.25 DIA	1
29	30327	SEAWATER PUMP DC POWER CABLE ASSEMBLY, 5M MFLG.	1
28	30302	ECU ASSEMBLY WITH BOOT LOAD SECURITY	1
27	30301	CABLE, MALE/FEMALE, NMEA 2000 PLASTIC MICRO	1
26	30300	6FT USB EXTENSION CABLE	1
25	30298	5 INCH TOUCH DISPLAY, GYRO CONTROLLER	1
24	30259	12VDC POWER RELAY	2
23	30249	TERMINATOR, NMEA 2000 MICRO, 120OHM FEMALE	1
22	30248	POSITION MARKER (MAGNET ONLY)	1
21	30246	AMPHENOL LTW PLASTIC CAP, MALE	1
20	30244	DISPLAY CABLE T- ADAPTOR	1
19	30243	CABLE, MALE/FEMALE, NMEA 2000 PLASTIC MICRO, 25M LG.	1
18	20460	SEAKEEPER 6/9 DC SEAWATER PUMP SWITCHING HARNESS WITH DIODE MODULE	1
17	20444	SK6 WIRING HARNESS, RECTIFIED MANIFOLD	1
16	20395	AC OUTPUT POWER 14/3 CABLE ASSEMBLY	1
15	20394	AC INPUT POWER 10/3 CABLE ASSEMBLY	1
14	20350	CAN IMU VERSION 2	1
13	20338	GROUND CABLE, 10AWG, 43.5"	1
12	20334	SEAWATER PUMP DC POWER CABLE ASSEMBLY, 5M LG.	1
11	20330	SMALL MODEL GYRO GIMBAL ANGLE SENSOR	1
10	20248	GYRO DC INPUT POWER CABLE ASSEMBLY, 5M LG.	1
9	20243	SK5 MOTOR ROTOR	1
8	20241	GROUND CABLE, 10AWG, 22"	1
7	20228	GROUND CABLE, 10AWG, 13"	1
6	20216	SEAKEEPER MOTOR DRIVE BOX	1
5	20211	SK5 FLYWHEEL MOTOR	1
4	12370	SK6 FLYWHEEL WIRE GUARD	1
3	12165	SK6 ECU PANEL, RECTIFIED MANIFOLD	1
2	11657	SK6 ANGLE SENSOR MOUNT	1
1	11112	SK5 ELECTRONICS BRACKET, MOTOR DRIVE BOX	1

PROPRIETARY AND CONFIDENTIAL		SEAKEEPER®	
THE INFORMATION CONTAINED IN THIS DRAWING IS THE SOLE PROPERTY OF SEAKEEPER INCORPORATED. ANY REPRODUCTION IN PART OR AS A WHOLE WITHOUT THE WRITTEN PERMISSION OF SEAKEEPER IS PROHIBITED.		Seakeeper Inc. 44425 Pecan Court, Suite 151 California, MD 20619	
NAME: SK6/5 ELECTRONICS SUB-SYSTEM, SERVICE REFERENCE		DWG NUMBER 11680-SP	
REV. NO. 8		SHEET NO. 1 OF 2	

WEIGHT - LBS : ---	DRAWN: WHK	DATE: 26JULY2016
MATERIAL: ---	ENG APPR: ---	DATE: ---
	PROD APPR: ---	DATE: ---



PROPRIETARY AND CONFIDENTIAL		SEAKEEPER®	
THE INFORMATION CONTAINED IN THIS DRAWING IS THE SOLE PROPERTY OF SEAKEEPER INCORPORATED. ANY REPRODUCTION IN PART OR AS A WHOLE WITHOUT THE WRITTEN PERMISSION OF SEAKEEPER IS PROHIBITED.		Seakeeper Inc. 44425 Pecan Court, Suite 151 California, MD 20619	
NAME: SK6/5 ELECTRONICS SUB-SYSTEM, SERVICE REFERENCE		REV. NO. SHEET NO. 8 2 OF 2	
DWG NUMBER 11680-SP			

WEIGHT - LBS : ---	DRAWN: WHK	DATE: 26JULY2016
MATERIAL: ---	ENG APPR:	DATE:
	PROD APPR:	DATE: