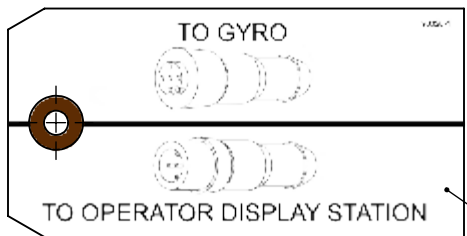
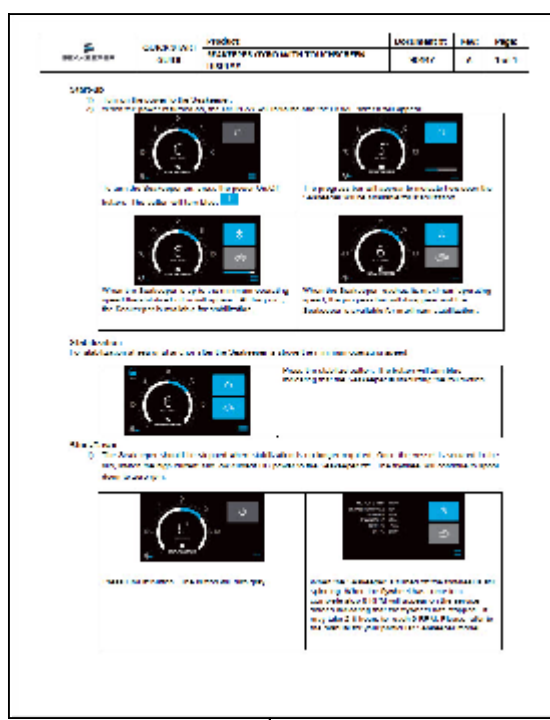
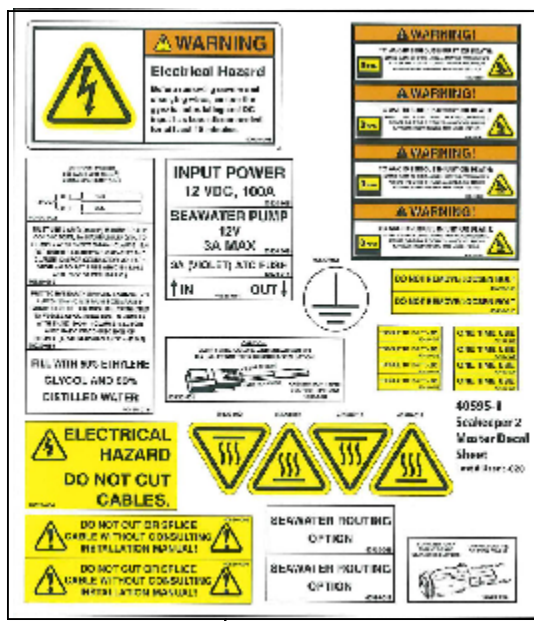
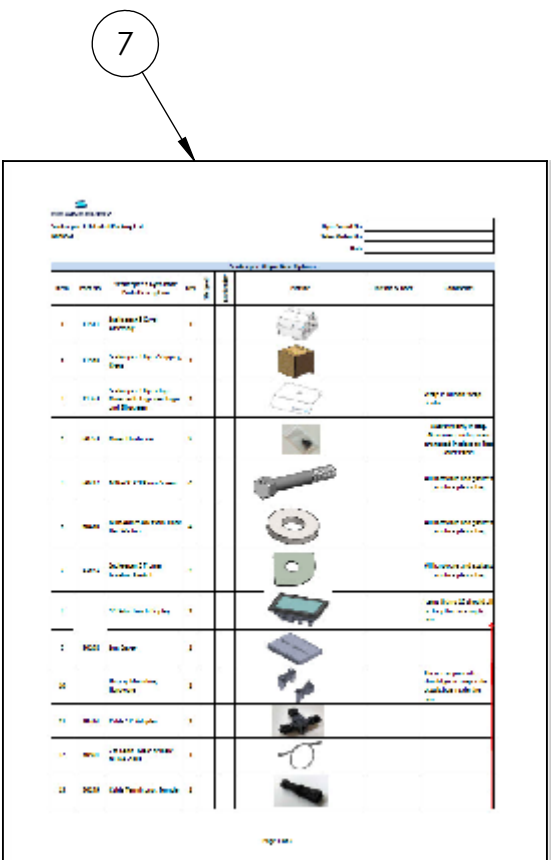
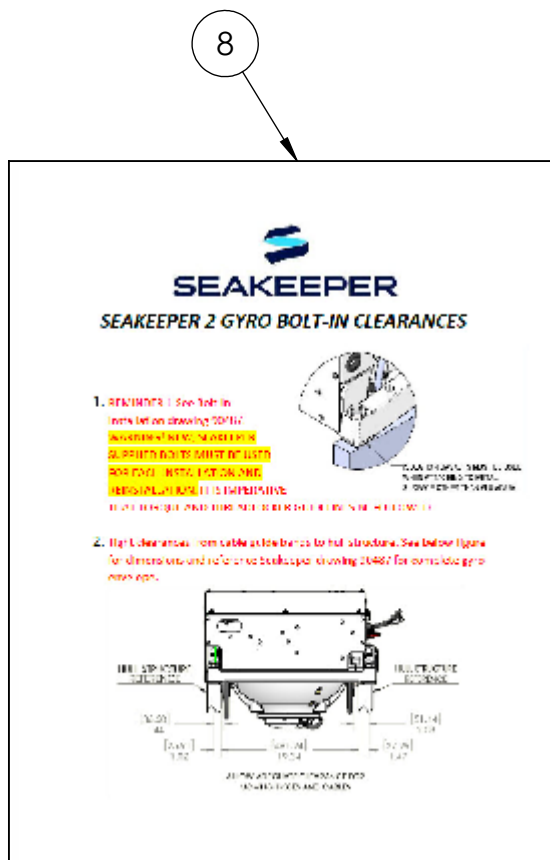
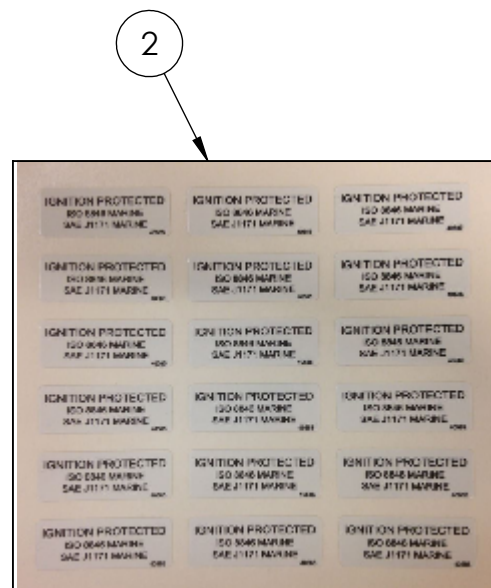
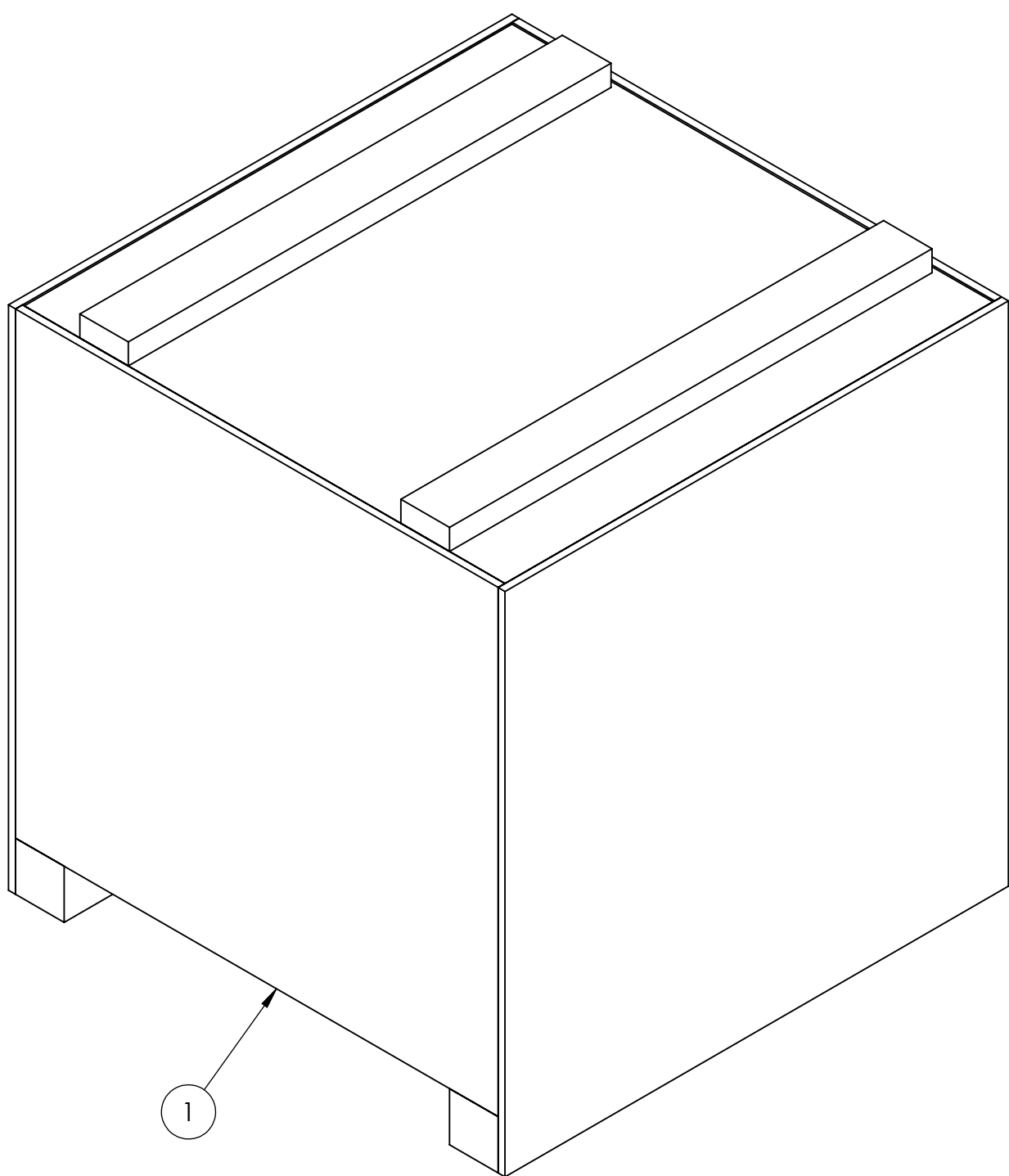


ITEMS NOT SHOWN TO SCALE

| REV. | ECN NO. | ZONE | DESCRIPTION | DATE | APPROVED |
|------|---------|------|-------------------------------------|------------|----------|
| 1 | | | RELEASED FOR PRODUCTION | 29MAR2018 | BEN |
| 2 | 0695 | | ADDED DISPLAY CABLE ORIENTATION TAG | 10/26/2018 | SAC |



| ITEM NO. | PART NO. | DESCRIPTION | QTY. | NOTE |
|----------|----------|--------------------------------------|------|------|
| 9 | 90328 | DISPLAY CABLE ORIENTATION TAG | | |
| 8 | 90492 | SK2 BOLT-IN CLEARANCES | 1 | |
| 7 | 90491 | SK2 PACKING LIST | 1 | |
| 6 | 90447 | TOUCHSCREEN QUICK START GUIDE | 1 | |
| 5 | 90336 | SEAKEEPER ELECTRONIC MANUAL DOCUMENT | 1 | |
| 4 | 40595 | SK2 DECAL SHEET | 1 | |
| 3 | 40594 | SK2 SERIAL PLATE | 1 | |
| 2 | 40585 | IGNITION PROTECTED DECAL SHEET | 1 | |
| 1 | 11851 | SK2 SHIPPING CRATE | 1 | |

WEIGHT - LBS: ---

MATERIAL: ---

PROPRIETARY AND CONFIDENTIAL

THE INFORMATION CONTAINED IN THIS DRAWING IS THE SOLE PROPERTY OF SEAKEEPER INCORPORATED. ANY REPRODUCTION IN PART OR AS A WHOLE WITHOUT THE WRITTEN PERMISSION OF SEAKEEPER IS PROHIBITED.

DRAWN: BEN
ENG APPR: DATE: 02MAR2018
PROD APPR: DATE:

SEAKEEPER[®]

Seakeeper Inc. 45310 Abell House Lane, Suite 350 California, MD 20619

NAME: SEAKEEPER 2 OTHERS SUB-SYSTEM

DWG NUMBER: 11866

REV. NO. 2

SHEET NO. 1 OF 1