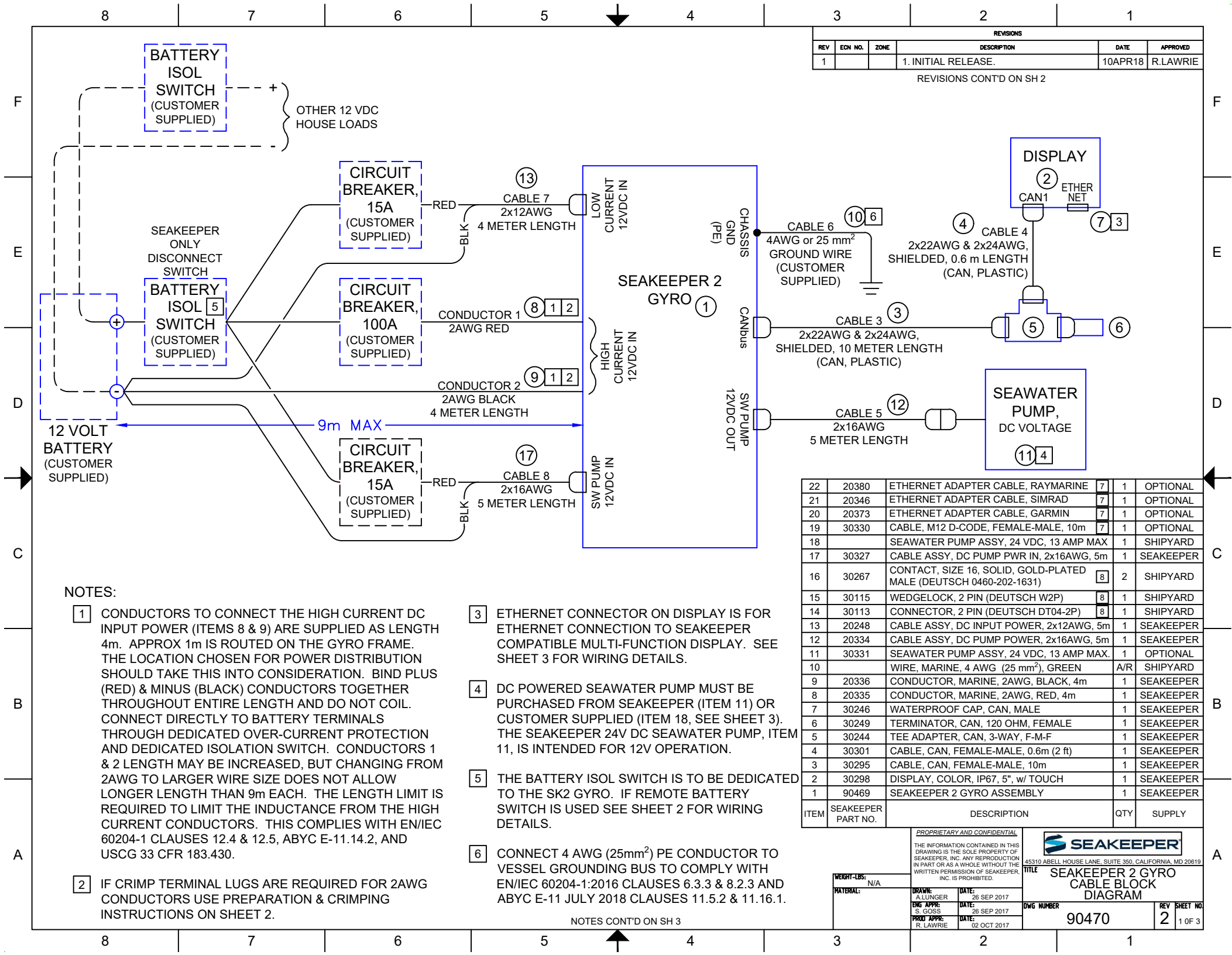


REVISIONS				
REV	EDN NO.	ZONE	DESCRIPTION	DATE
1			1. INITIAL RELEASE.	10APR18

REVISIONS CONT'D ON SH 2



# NOTES:

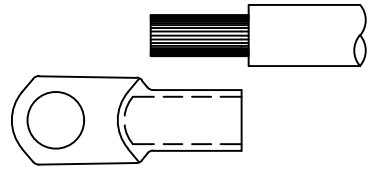
- 1 CONDUCTORS TO CONNECT THE HIGH CURRENT DC INPUT POWER (ITEMS 8 & 9) ARE SUPPLIED AS LENGTH 4m. APPROX 1m IS ROUTED ON THE GYRO FRAME. THE LOCATION CHOSEN FOR POWER DISTRIBUTION SHOULD TAKE THIS INTO CONSIDERATION. BIND PLUS (RED) & MINUS (BLACK) CONDUCTORS TOGETHER THROUGHOUT ENTIRE LENGTH AND DO NOT COIL. CONNECT DIRECTLY TO BATTERY TERMINALS THROUGH DEDICATED OVER-CURRENT PROTECTION AND DEDICATED ISOLATION SWITCH. CONDUCTORS 1 & 2 LENGTH MAY BE INCREASED, BUT INCREASED FROM 2AWG TO LARGER WIRE SIZE DOES NOT ALLOW LONGER LENGTH THAN 9m EACH. THE LENGTH LIMIT IS REQUIRED TO LIMIT THE INDUCTANCE FROM THE HIGH CURRENT CONDUCTORS. THIS COMPLIES WITH EN/IEC 60204-1 CLAUSES 12.4 & 12.5, ABYC E-11.14.2, AND USCG 33 CFR 183.430.
- 2 IF CRIMP TERMINAL LUGS ARE REQUIRED FOR 2AWG CONDUCTORS USE PREPARATION & CRIMPING INSTRUCTIONS ON SHEET 2.
- 3 ETHERNET CONNECTOR ON DISPLAY IS FOR ETHERNET CONNECTION TO SEAKEEPER COMPATIBLE MULTI-FUNCTION DISPLAY. SEE SHEET 3 FOR WIRING DETAILS.
- 4 DC POWERED SEAWATER PUMP MUST BE PURCHASED FROM SEAKEEPER (ITEM 11) OR CUSTOMER SUPPLIED (ITEM 18, SEE SHEET 3). THE SEAKEEPER 24V DC SEAWATER PUMP, ITEM 11, IS INTENDED FOR 12V OPERATION.
- 5 THE BATTERY ISOL SWITCH IS TO BE DEDICATED TO THE SK2 GYRO. IF REMOTE BATTERY SWITCH IS USED SEE SHEET 2 FOR WIRING DETAILS.
- 6 CONNECT 4 AWG (25mm²) PE CONDUCTOR TO VESSEL GROUNDING BUS TO COMPLY WITH EN/IEC 60204-1:2016 CLAUSES 6.3.3 & 8.2.3 AND ABYC E-11 JULY 2018 CLAUSES 11.5.2 & 11.16.1.

NOTES CONT'D ON SH 3

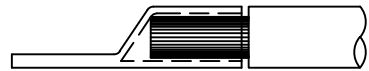
22	20380	ETHERNET ADAPTER CABLE, RAYMARINE	7	1	OPTIONAL
21	20346	ETHERNET ADAPTER CABLE, SIMRAD	7	1	OPTIONAL
20	20373	ETHERNET ADAPTER CABLE, GARMIN	7	1	OPTIONAL
19	30330	CABLE, M12 D-CODE, FEMALE-MALE, 10m	7	1	OPTIONAL
18		SEAWATER PUMP ASSY, 24 VDC, 13 AMP MAX		1	SHIPYARD
17	30327	CABLE ASSY, DC PUMP PWR IN, 2x16AWG, 5m	1	1	SEAKEEPER
16	30267	CONTACT, SIZE 16, SOLID, GOLD-PLATED MALE (DEUTSCH 0460-202-1631)	8	2	SHIPYARD
15	30115	WEDGELOCK, 2 PIN (DEUTSCH W2P)	8	1	SHIPYARD
14	30113	CONNECTOR, 2 PIN (DEUTSCH DT04-2P)	8	1	SHIPYARD
13	20248	CABLE ASSY, DC INPUT POWER, 2x12AWG, 5m		1	SEAKEEPER
12	20334	CABLE ASSY, DC PUMP POWER, 2x16AWG, 5m		1	SEAKEEPER
11	30331	SEAWATER PUMP ASSY, 24 VDC, 13 AMP MAX.		1	OPTIONAL
10		WIRE, MARINE, 4 AWG (25 mm²), GREEN		A/R	SHIPYARD
9	20336	CONDUCTOR, MARINE, 2AWG, BLACK, 4m		1	SEAKEEPER
8	20335	CONDUCTOR, MARINE, 2AWG, RED, 4m		1	SEAKEEPER
7	30246	WATERPROOF CAP, CAN, MALE		1	SEAKEEPER
6	30249	TERMINATOR, CAN, 120 OHM, FEMALE		1	SEAKEEPER
5	30244	TEE ADAPTER, CAN, 3-WAY, F-M-F		1	SEAKEEPER
4	30301	CABLE, CAN, FEMALE-MALE, 0.6m (2 ft)		1	SEAKEEPER
3	30295	CABLE, CAN, FEMALE-MALE, 10m		1	SEAKEEPER
2	30298	DISPLAY, COLOR, IP67, 5", w/ TOUCH		1	SEAKEEPER
1	90469	SEAKEEPER 2 GYRO ASSEMBLY		1	SEAKEEPER

ITEM	SEAKEEPER PART NO.	DESCRIPTION	QTY	SUPPLY
<div> <div> PROPRIETARY AND CONFIDENTIAL  THE INFORMATION CONTAINED IN THIS DRAWING IS THE SOLE PROPERTY OF SEAKEEPER, INC. ANY REPRODUCTION IN PART OR AS A WHOLE WITHOUT THE WRITTEN PERMISSION OF SEAKEEPER, INC. IS PROHIBITED. </div> <div> DRAWN: A. LUNGER  DATE: 26 SEP 2017  ENG APPR: S. GOSS  DATE: 26 SEP 2017  PROD APPR: R. LAWRIE  DATE: 02 OCT 2017 </div> <div>   45310 ABBEY HOUSE LANE, SUITE 350, CALIFORNIA, MD 20619  TITLE: SEAKEEPER 2 GYRO CABLE BLOCK DIAGRAM  DWG NUMBER: 90470  REV: 2  SHEET NO: 1 OF 3 </div> </div>				

## CRIMPING INSTRUCTIONS



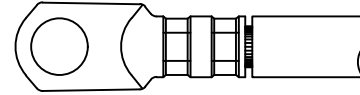
- USE HEAVY-DUTY EYELET (CLOSED END) TERMINAL SUCH AS MOLEX 19221-0235. STRIP INSULATION FROM 2AWG CONDUCTOR TO THE LENGTH OF THE TERMINAL BARREL, APPROXIMATELY AS SHOWN.



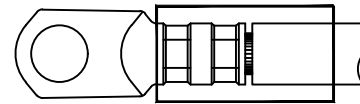
- INSERT STRIPPED END OF 2AWG CONDUCTOR FULLY INTO BARREL OF HEAVY-DUTY EYELET (CLOSED END) TERMINAL, APPROXIMATELY AS SHOWN.



- CRIMP WITH QUICK CABLE 4245 CUB CRIMP TOOL OR EQUIVALENT, DOUBLE CRIMP, AS SHOWN.

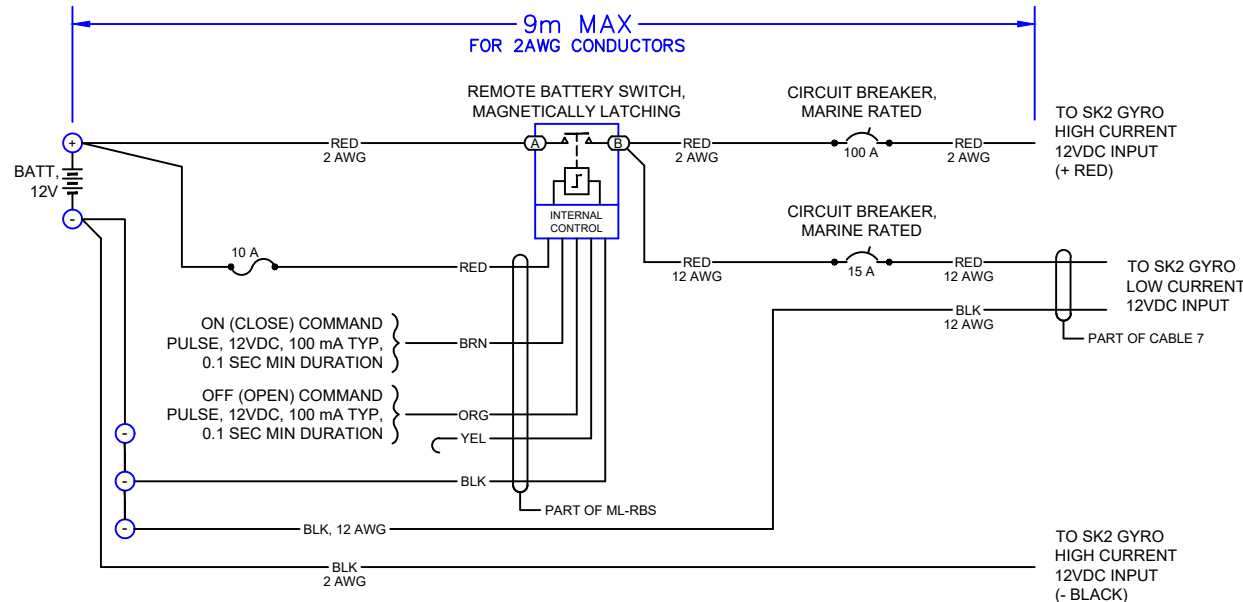


- THE RESULTANT CRIMP(S) SHOULD FULLY ENCLOSE AND CONFINE THE CONDUCTOR STRANDS FROM ALL SIDES AND WITHSTAND AN AGGRESSIVE, MANUAL PULL TEST.



- INSTALL APPROXIMATELY 1.5 INCH OF DOUBLE WALL (ADHESIVE LINED) HEAT SHRINK TUBING OVER BOTH THE TERMINAL BARREL AND THE CONDUCTOR INSULATION. HEAT SHRINK IN PLACE UNTIL TUBING CONFORMS TO BARREL AND CONDUCTOR SHAPE AND ADHESIVE SEALS THE JUNCTION.

## REMOTE BATTERY SWITCH WIRING DETAILS



### ML-RBS WITH TINNED WIRE TERMINATION

REMOTE BATTERY SWITCH, MAGNETICALLY LATCHING, 12V: BLUE SEA SYSTEMS 7700

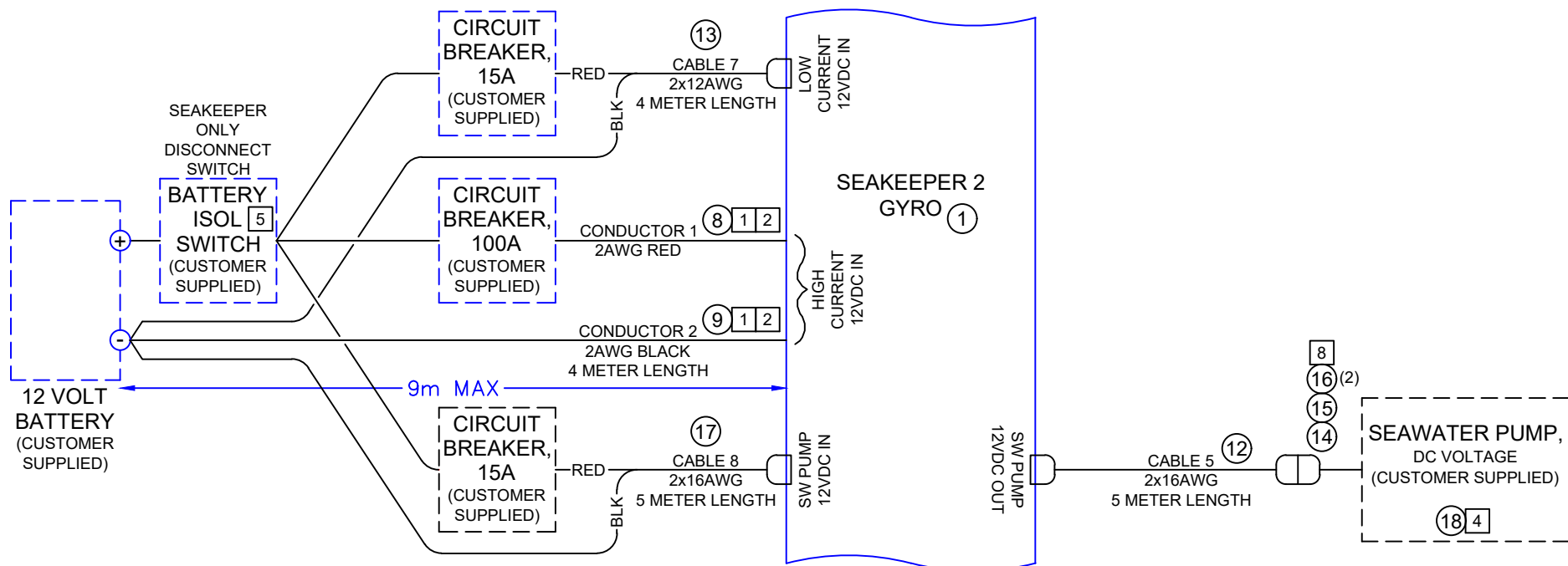
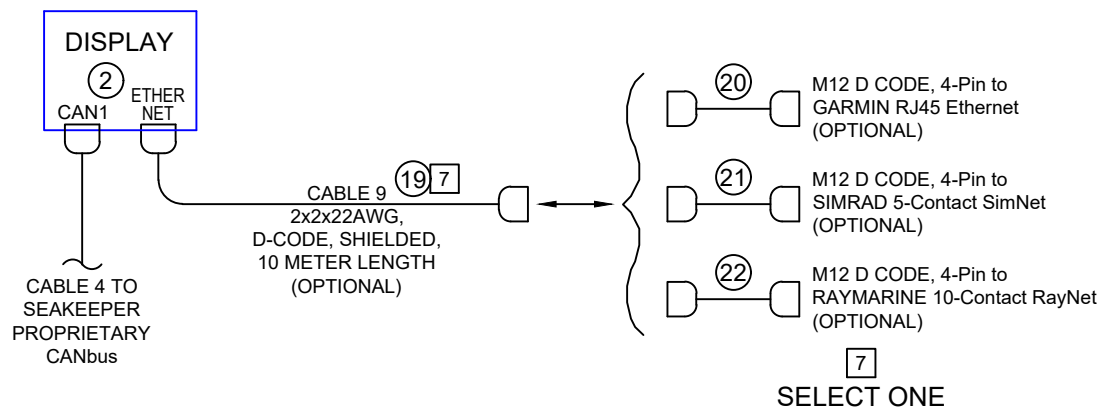
REVISIONS					
REV	ECN NO.	ZONE	DESCRIPTION	DATE	APPROVED
2		SH2	1. CHANGED ITEM 11 DC SEAWATER PUMP TO OPTIONAL SOURCE AND ADDED PART NUMBER. 2. ADDED ITEM 17 DC POWER INPUT CABLE ASSY FOR DC SEAWATER PUMP WITH CUSTOMER SUPPLIED CIRCUIT BREAKER. 3. ADDED ITEM 18 ALTERNATE DC SEAWATER PUMP ON NEW SHEET 3. 4. ADDED ITEMS 19-22 AND ETHERNET CONNECTION DETAIL ON SHEET 3.	30JUL20	W.GARZON

WEIGHT-LBS:		N/A		MATERIAL:	
DRAWN:	ALLINGER	DATE:	26 SEP 2017	ENG APPR:	S. GOSS
PROD APPR:	R. LAWRIE	DATE:	02 OCT 2017	DATE:	26 SEP 2017
<b>SEAKEEPER</b> 45310 ABELL HOUSE LANE, SUITE 350, CALIFORNIA, MD 20619 TITLE: <b>SEAKEEPER 2 GYRO CABLE BLOCK DIAGRAM</b> DWG NUMBER: <b>90470</b> REV: <b>2</b> SHEET NO: <b>2 OF 3</b>					

NOTES:

7 FOR SEAKEEPER COMPATIBLE MULTI-FUNCTION DISPLAY (MFD) CONNECTIVITY, ADAPTER CABLE MUST BE SELECTED FOR MFD BRAND FROM ITEMS 20-22. IF ADDITIONAL LENGTH IS NECESSARY USE D-CODE ETHERNET CABLE, ITEM 19.

8 ALTERNATE SEAWATER PUMP CONFIGURATION FOR CUSTOMER SUPPLIED 12VDC POWERED SEAWATER PUMP (ITEM 18), 15 AMPS MAXIMUM. OVER-CURRENT PROTECTION ON CABLE 8 MUST BE SELECTED FOR PUMP RATING. INSTALL CONNECTOR PARTS, ITEMS 14-16, ON SEAWATER PUMP LEADS WITH CRIMP TOOL, DEUTSCH HDT-48-00 OR HDT-1561; PIN 1 TO +V AND PIN 2 TO -V.



<b>PROPRIETARY AND CONFIDENTIAL</b> THE INFORMATION CONTAINED IN THIS DRAWING IS THE SOLE PROPERTY OF SEAKEEPER, INC. ANY REPRODUCTION IN PART OR AS A WHOLE WITHOUT THE WRITTEN PERMISSION OF SEAKEEPER, INC. IS PROHIBITED.			
45310 ABELL HOUSE LANE, SUITE 350, CALIFORNIA, MD 20619		<b>TITLE</b> SEAKEEPER 2 GYRO CABLE BLOCK DIAGRAM	
<b>WEIGHT-LBS:</b> N/A		<b>DWG NUMBER</b> 90470	
<b>DRAWN:</b> ALLINGER		<b>DATE:</b> 26 SEP 2017	
<b>ENG APPR:</b> S. GOSS		<b>DATE:</b> 26 SEP 2017	
<b>PROD APPR:</b> R. LAWRIE		<b>DATE:</b> 02 OCT 2017	
		<b>REV</b> 2	<b>SHEET NO.</b> 3 OF 3