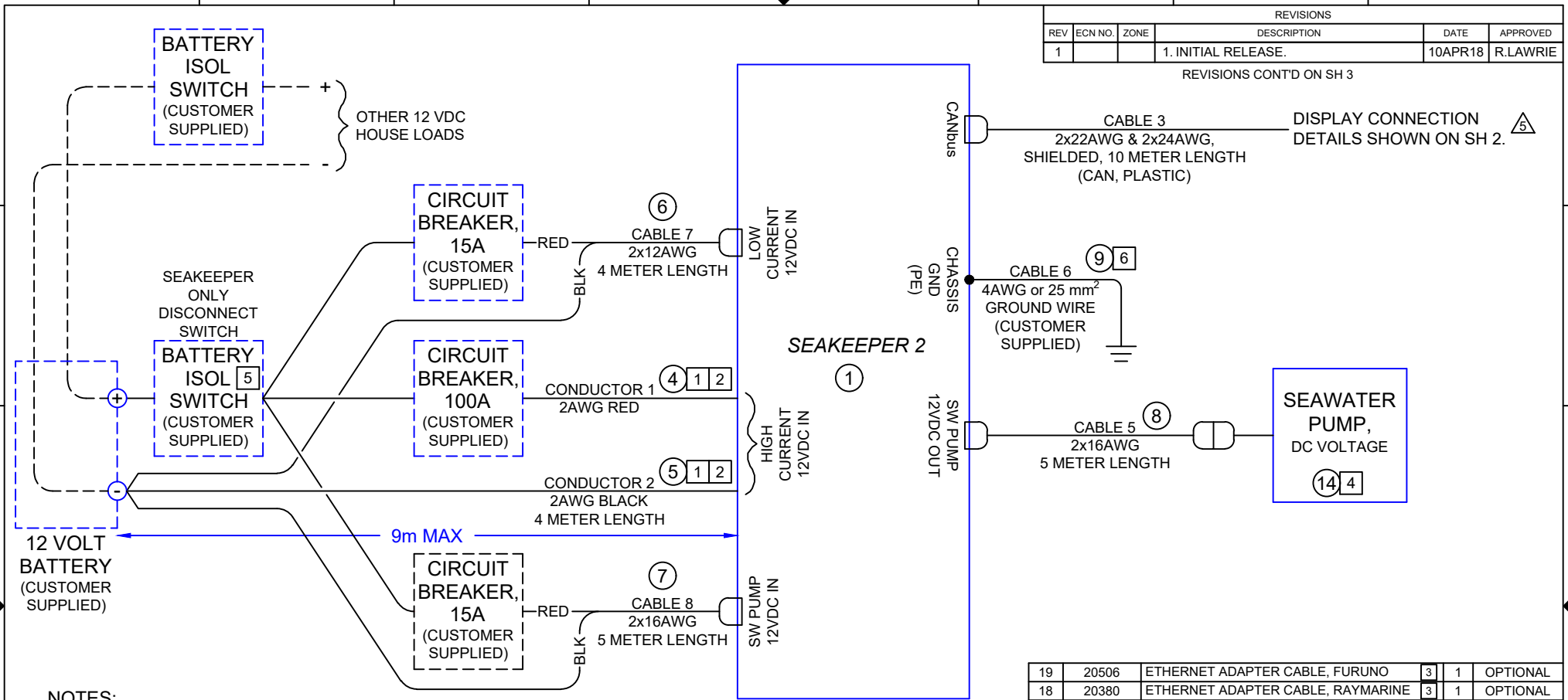


REVISIONS				
REV	ECN NO.	ZONE	DESCRIPTION	DATE
1			1. INITIAL RELEASE.	10APR18

REVISIONS CONT'D ON SH 3



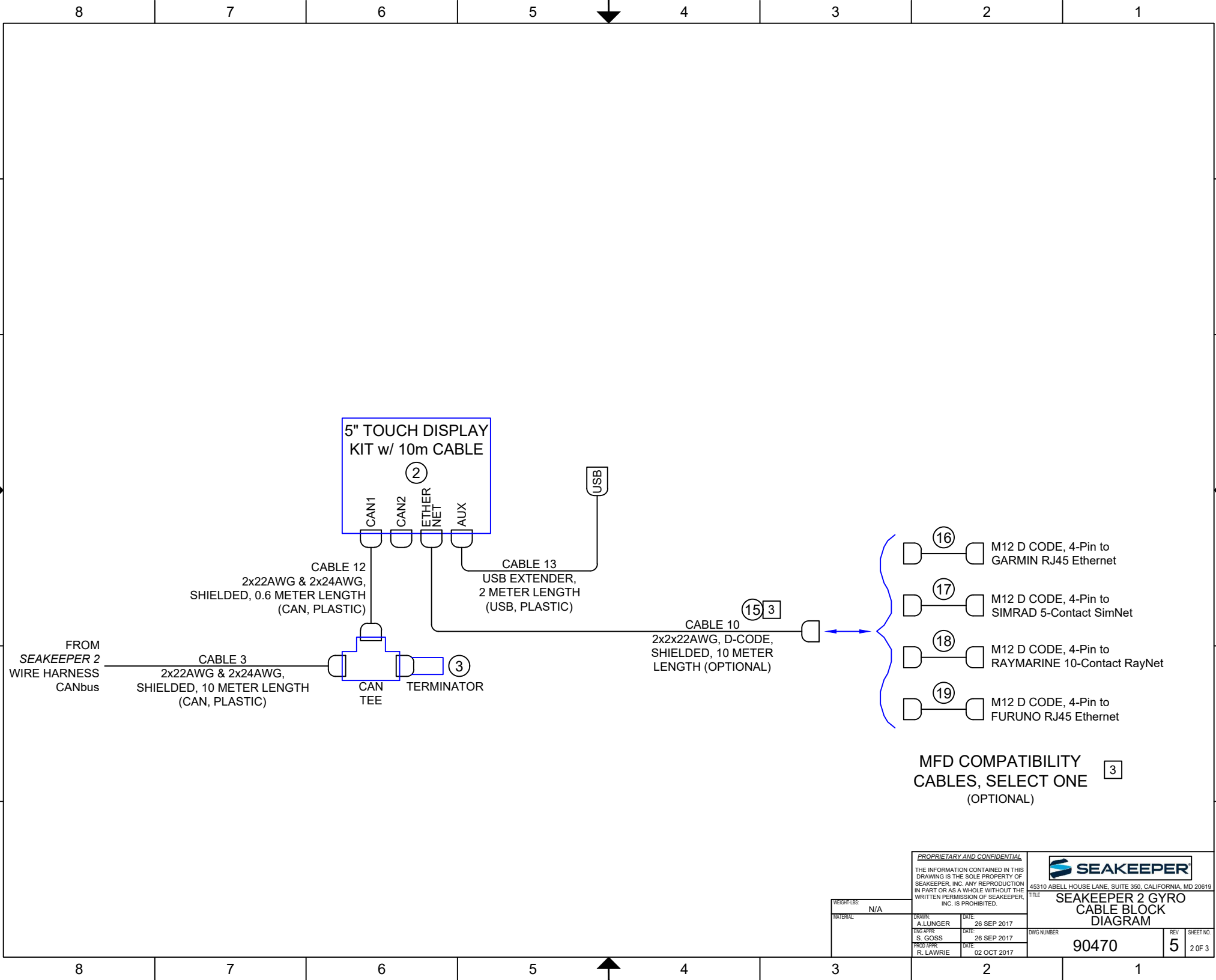
NOTES:

- [1] CONDUCTORS TO CONNECT THE HIGH CURRENT DC INPUT POWER (ITEMS 4 & 5) ARE SUPPLIED AS LENGTH 4m. APPROX 1m IS ROUTED ON THE GYRO FRAME. THE LOCATION CHOSEN FOR POWER DISTRIBUTION SHOULD TAKE THIS INTO CONSIDERATION. BIND PLUS (RED) & MINUS (BLACK) CONDUCTORS TOGETHER THROUGHOUT ENTIRE LENGTH AND DO NOT COIL. CONNECT DIRECTLY TO BATTERY TERMINALS THROUGH DEDICATED OVER-CURRENT PROTECTION AND DEDICATED ISOLATION SWITCH. CONDUCTORS 1 & 2 LENGTH MAY BE INCREASED, BUT CHANGING FROM 2AWG TO LARGER WIRE SIZE DOES NOT ALLOW LONGER LENGTH THAN 9m EACH. THE LENGTH LIMIT IS REQUIRED TO LIMIT THE INDUCTANCE FROM THE HIGH CURRENT CONDUCTORS. THIS COMPLIES WITH EN/IEC 60204-1 CLAUSES 12.4 & 12.5, ABYC E-11.14.2, AND USCG 33 CFR 183.430.
- [2] IF CRIMP TERMINAL LUGS ARE REQUIRED FOR 2AWG CONDUCTORS USE PREPARATION & CRIMPING INSTRUCTIONS IN SK2 INSTALLATION MANUAL (90488).
- [3] ETHERNET CONNECTOR ON 5" TOUCH DISPLAY IS FOR ETHERNET CONNECTION TO SEAKEEPER COMPATIBLE MULTI-FUNCTION DISPLAY (MFD) USING M12 D-CODE CABLE (ITEM 15). ADAPTER CABLE MUST BE SELECTED FOR MFD BRAND FROM ITEMS 16-19. SEE SHEET 2 FOR WIRING DETAILS.
- [4] DC POWERED SEAWATER PUMP MUST BE PURCHASED FROM SEAKEEPER (ITEM 14) OR CUSTOMER SUPPLIED (ITEM 13, SEE SHEET 3). THE SEAKEEPER 24V DC SEAWATER PUMP, ITEM 14, IS INTENDED FOR 12V OPERATION.
- [5] THE BATTERY ISOLATION SWITCH IS TO BE DEDICATED TO THE SK2 GYRO. A REMOTE BATTERY SWITCH WITH MINIMUM 90 AMP CONTINUOUS CURRENT RATING MAY BE USED.
- [6] CONNECT 4 AWG (25mm²) PE CONDUCTOR TO VESSEL GROUNDING BUS TO COMPLY WITH EN/IEC 60204-1:2016 CLAUSES 6.3.3 & 8.2.3 AND ABYC E-11 JULY 2018 CLAUSES 11.5.2 & 11.16.1.

19	20506	ETHERNET ADAPTER CABLE, FURUNO	3	1	OPTIONAL
18	20380	ETHERNET ADAPTER CABLE, RAYMARINE	3	1	OPTIONAL
17	20346	ETHERNET ADAPTER CABLE, SIMRAD	3	1	OPTIONAL
16	20373	ETHERNET ADAPTER CABLE, GARMIN	3	1	OPTIONAL
15	30330	CABLE, M12 D-CODE, FEMALE-MALE, 10m	3	1	OPTIONAL
14	30331	SEAWATER PUMP ASSY, 24 VDC, 13 AMP MAX.	1	1	OPTIONAL
13	---	SEAWATER PUMP ASSY, 24 VDC, 13 AMP MAX	1	1	SHIPYARD
12	30267	CONTACT, SIZE 16, SOLID, GOLD-PLATED MALE (DEUTSCH 0460-202-1631)	7	2	SHIPYARD
11	30115	WEDGELOCK, 2 PIN (DEUTSCH W2P)	7	1	SHIPYARD
10	30113	CONNECTOR, 2 PIN (DEUTSCH DT04-2P)	7	1	SHIPYARD
9	---	WIRE, MARINE, 4 AWG (25 mm²), GREEN	A/R		SHIPYARD
8	20334	CABLE ASSY, DC PUMP POWER, 2x16AWG, 5m	1	1	SEAKEEPER
7	30327	CABLE ASSY, DC PUMP PWR IN, 2x16AWG, 5m	1	1	SEAKEEPER
6	20248	CABLE ASSY, DC INPUT POWER, 2x12AWG, 5m	1	1	SEAKEEPER
5	20336	CONDUCTOR, MARINE, 2AWG, BLACK, 4m	1	1	SEAKEEPER
4	20335	CONDUCTOR, MARINE, 2AWG, RED, 4m	1	1	SEAKEEPER
3	30249	TERMINATOR, CAN, 120 OHM, FEMALE	1	1	SEAKEEPER
2	90600	DISPLAY KIT, 5" TOUCHSCREEN, 10m CABLE	1	1	SEAKEEPER
1	90469	SEAKEEPER 2 GYRO ASSEMBLY	1	1	SEAKEEPER

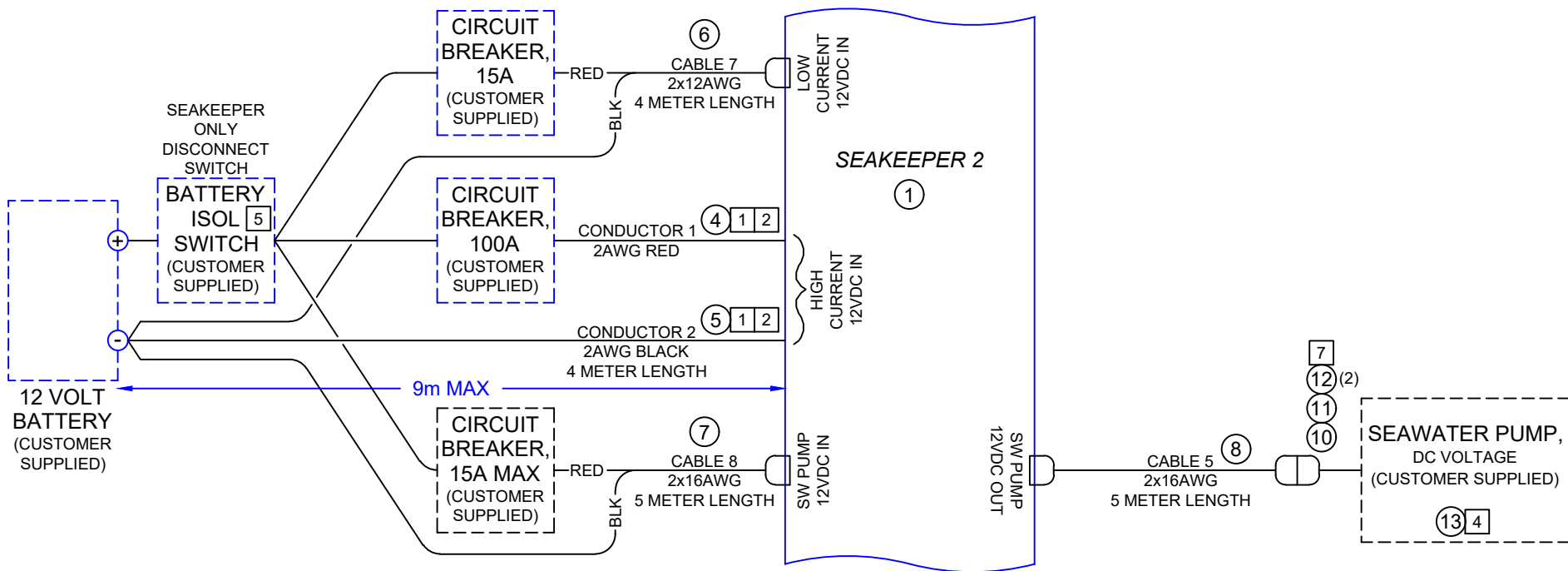
ITEM	SEAKEEPER PART NO.	DESCRIPTION	QTY	SUPPLY
PROPRIETARY AND CONFIDENTIAL				
THE INFORMATION CONTAINED IN THIS DRAWING IS THE SOLE PROPERTY OF SEAKEEPER, INC. ANY REPRODUCTION IN PART OR AS A WHOLE WITHOUT THE WRITTEN PERMISSION OF SEAKEEPER, INC. IS PROHIBITED.				
DRAWN: A. LUNGER		DATE: 26 SEP 2017		
ENG APPR: S. GOSS		DATE: 26 SEP 2017		
PROD APPR: R. LAWRIE		DATE: 02 OCT 2017		
WEIGHT: N/A		MATERIAL: N/A		
TITLE: SEAKEEPER 2 GYRO CABLE BLOCK DIAGRAM		DWC NUMBER: 90470		
REV: 5		SHEET NO: 1 OF 3		

NOTES CONT'D ON SH 3, ZONE 8-F



NOTES: (FROM SH 1, ZONE 5-A)

- 7 ALTERNATE SEAWATER PUMP CONFIGURATION FOR CUSTOMER SUPPLIED 12VDC POWERED SEAWATER PUMP (ITEM 13), 15 AMPS MAXIMUM. OVER-CURRENT PROTECTION ON CABLE 8 MUST BE SELECTED FOR PUMP RATING. INSTALL CONNECTOR PARTS, ITEMS 10-12, ON SEAWATER PUMP LEADS WITH CRIMP TOOL, DEUTSCH HDT-48-00 OR HDT-1561; PIN 1 TO +V AND PIN 2 TO -V.



REVISIONS					
REV	ECN NO.	ZONE	DESCRIPTION	DATE	APPROVED
5	1009	P/L	1. DELETED ITEMS 24 & 25 FROM P/L; WERE 90600, 5" DISPLAY KIT, AND 90558, CONNECTBOX REMOTE MOUNT KIT.	27JUL22	DMF
		P/L	2. REPLACED ITEM 2 WITH 90600, 5" DISPLAY KIT; WAS 20415, CONNECTBOX USER INTERFACE.		
		P/L	3. CHANGED 30330 SUPPLY TO OPTIONAL AND RENUMBERED IN P/L.		
		P/L	4. REMOVED CANBUS CONNECTIVITY ITEMS FROM P/L THAT ARE PART OF 90600 AND RENUMBERED P/L.		
		SH 2 & 3	5. REMOVED CONNECTBOX OPTIONAL CONNECTIONS FROM SH 2 AND DELETED SH 2.		
		NOTES	6. DELETED NOTES 7-10 AND RENUMBERED NOTE 11 TO NOTE 7.		

PROPRIETARY AND CONFIDENTIAL				SEAKEEPER	
THE INFORMATION CONTAINED IN THIS DRAWING IS THE SOLE PROPERTY OF SEAKEEPER, INC. ANY REPRODUCTION IN PART OR AS A WHOLE WITHOUT THE WRITTEN PERMISSION OF SEAKEEPER, INC. IS PROHIBITED.				45310 ABELL HOUSE LANE, SUITE 350, CALIFORNIA, MD 20619	
WEIGHT: LBS	N/A	DRAWN	A. LUNGER	DATE	26 SEP 2017
MATERIAL		ENG APPR	S. GOSS	DATE	26 SEP 2017
		PROD APPR	R. LAWRIE	DATE	02 OCT 2017
TITLE				DWG NUMBER	REV SHEET NO.
SEAKEEPER 2 GYRO CABLE BLOCK DIAGRAM				90470	5 3 OF 3