

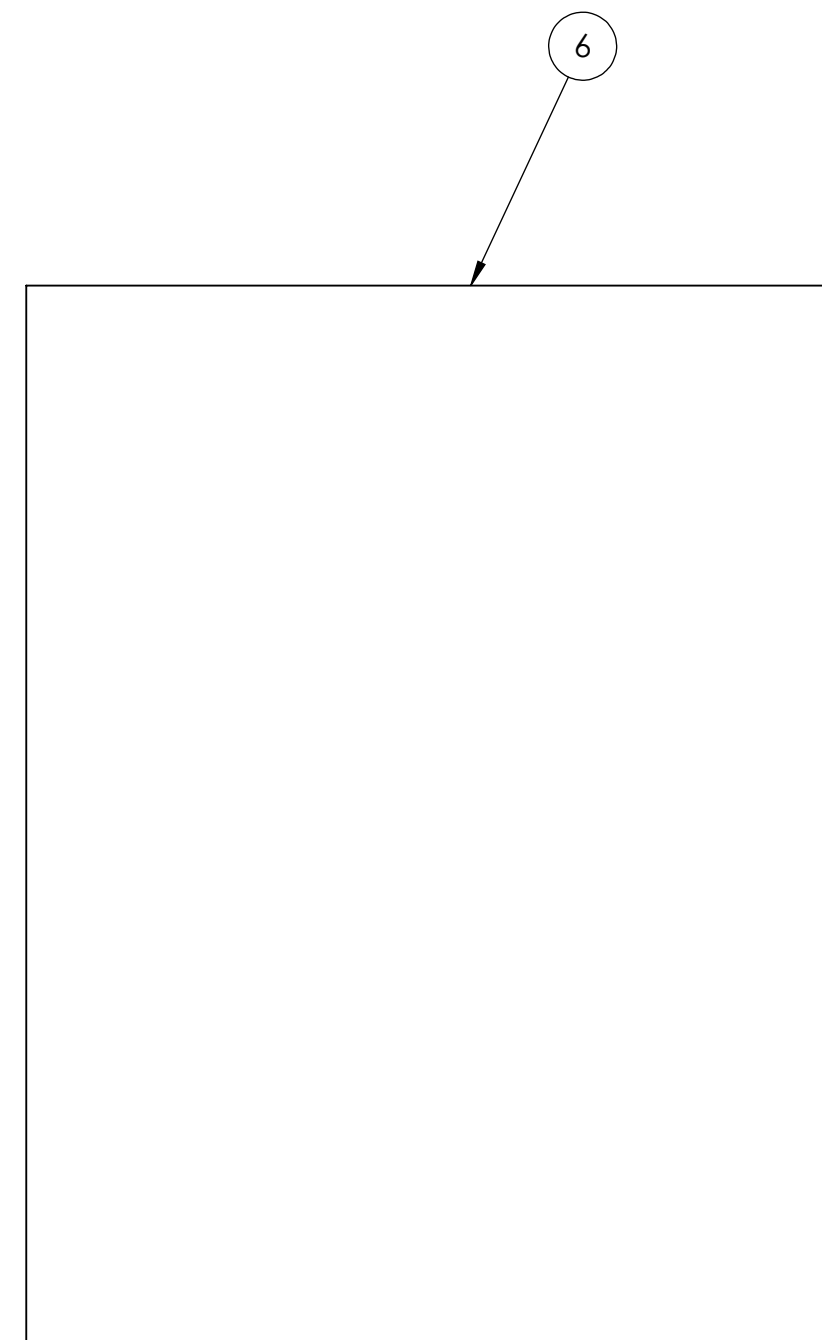
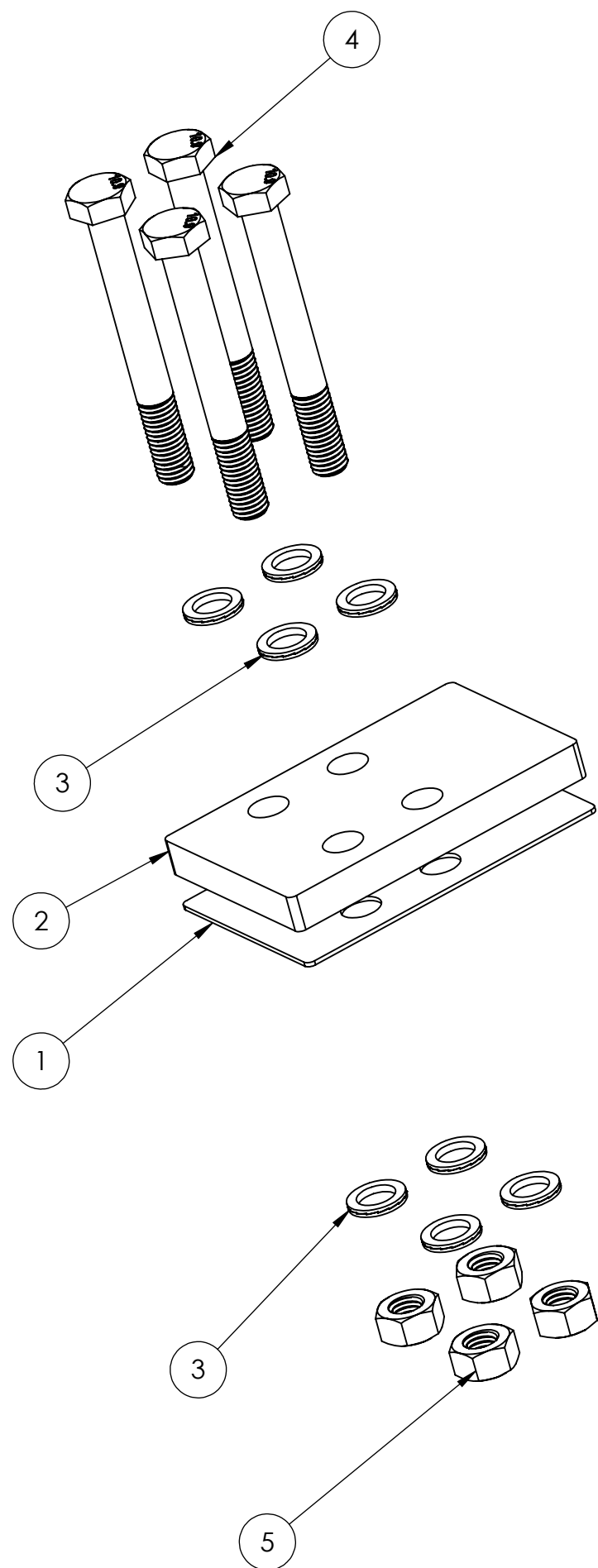
REV NO.	ECN NO.	ZONE	DESCRIPTION	DATE	APPRVD.
1	908	---	INITIAL RELEASE	8/8/2021	ZGY

**NOTE:**


1) THESE COMPONENTS ARE TO BE USED DURING A THRU-BOLT INSTALLATION OF SEAKEEPER 5/6 TO ANY METAL OR FIBERGLASS SURFACE STRUCTURE IN ACCORDANCE TO THE SEAKEEPER 5/6 GENERIC INSTALLATION GUIDE. THE 4 GASKET PADS MUST BE USED BETWEEN THE ALUMINUM GYRO FRAME SPACER AND ANY DISSIMILAR METAL STRUCTURE THAT THE GYRO WILL BOLT AGAINST. THE BOLTS SUPPLIED ARE CLASS 10.9 ZINC-NICKEL PLATED ALLOY STEEL, M12-1.75 X 100mm LG. ANY OTHER LENGTH NEEDED MUST BE SUPPLIED BY INSTALLER. SEAKEEPER RECOMMENDS THE USE OF A MODERATE COAT OF MARINE ANTI-SEIZE (E.G., SAF-T-EZE NICKEL GRADE ANTI-SEIZE, SBT-4N OR EQUIVALENT) TO THE THREADS OF EACH BOLT. SEAKEEPER ALSO RECOMMENDS USING A MARINE GRADE SEALANT (E.G., SILI-THANE 803 OR EQUIVALENT) UNDER EACH BOLT HEAD AND WASHER TO HELP PREVENT CORROSION OF BOLTS.

**PACKAGING INSTRUCTIONS:**

- a) PACKAGE EACH PART NUMBER ITEM IN A BAG AND LABEL EACH BAG WITH PART NUMBER.
- b) PLACE A COPY OF SEAKEEPER 5/6 BOLT-IN CLEARANCES, INSIDE THE PACKAGING.
- c) LABEL THE ENTIRE KIT "90660 SEAKEEPER 5/6 THRU-BOLT KIT".



ITEM NO.	PART NO.	DESCRIPTION	QTY.	NOTE
6	90391	SEAKEEPER 5-6 GYRO BOLT-IN CLEARANCES	1	
5	60847	M12-1.75 HEX CLASS 10, STANDARD NUT, Zn-Ni PLTD STEEL	16	
4	60845	SCREW, HEX HD CAP, M12-1.75 X 100MM LG, PAR TD, GRD 10.9, Zn-Ni PLTD STL	16	
3	60844	WASHER, WEDGE LOCK, .51ID X .77 OD (STANDARD OD), DELTA PROTEKT PLTD STL	32	
2	11241	SK5 FOUNDATION SPACER	4	
1	11145	SK5 FRAME ISOLATION GASKET	4	

WEIGHT - LBS : ---		<b>PROPRIETARY AND CONFIDENTIAL</b>		 Seakeeper Inc. 45310 Abell House Lane, Suite 350 California, MD 20619 NAME: SK5/6 THRU-BOLT KIT	
MATERIAL: ---		THE INFORMATION CONTAINED IN THIS DRAWING IS THE SOLE PROPERTY OF SEAKEEPER INCORPORATED. ANY REPRODUCTION IN PART OR AS A WHOLE WITHOUT THE WRITTEN PERMISSION OF SEAKEEPER IS PROHIBITED.			
DRAWN: ZGY		DATE: 03AUG2021		DWG NUMBER: 90660	
ENG APPR: TMD		DATE: 03AUG2021		REV. NO. SHEET NO.: 1 1 OF 1	
PROD APPR:		DATE:			