

FURUNO AND SEAKEEPER COMPATIBILITY



PRODUCT ALL SEAKEEPER SERIES MODELS

DESCRIPTION

Seakeeper and Furuno have teamed up to make your boating experience better. You are now able to control and monitor Seakeepers using select compatible models of Furuno MFD devices. Installation requirements are below.

COMPATIBLE FURUNO AND SEAKEEPER HARDWARE

Furuno hardware: TZT9F, TZT12F, TZT16F, TZT19F, and TZT2BB series units. See [Furuno integration with Third Party Devices via Ethernet](#) document.

Seakeeper hardware: any Seakeeper model with a 5" Touch Display (P/N 30298) or Seakeeper ConnectBox (P/N 20415).

NOTE: A display upgrade kit is available for select Seakeepers using older displays.

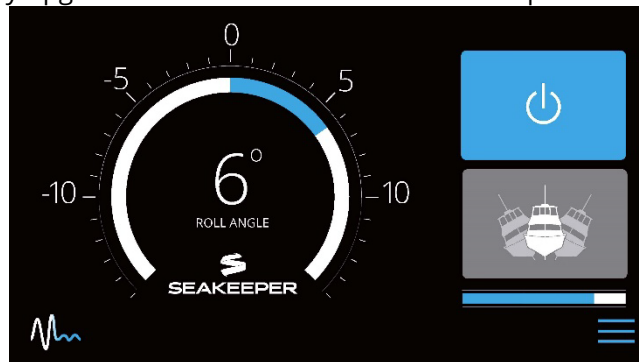


Figure 1: Seakeeper 5" Touch Display Home Screen

SOFTWARE REQUIREMENTS

The latest Furuno MFD software is recommended and can be found at <https://v1.furunosoftware.com/auth.html>. Seakeeper is not responsible for updating Furuno software.

The latest Seakeeper display software release is always recommended. Visit [Seakeeper Software page](#) or contact your local Seakeeper dealer for software update information. Visit <https://seakeeper.com/find-us/> for a complete listing of Seakeeper dealers.

CONNECTION TYPES

Furuno devices use the Furuno Ethernet Hub101 for connection with RJ45 ethernet connectors. Seakeeper 5" Touch Display and ConnectBox ethernet ports use a 4-pin, M12, male, straight, D, circular connector.

FURUNO AND SEAKEEPER COMPATIBILITY



PRODUCT ALL SEAKEEPER SERIES MODELS

CONNECTING FROM SEAKEEPER 5" TOUCH DISPLAY

1. Connect the Seakeeper 5" Touch Display to the Furuno Ethernet Hub101 using a 2 m (6.5 ft) custom Furuno ethernet adapter cable (P/N 20506) available for purchase from your local Seakeeper dealer.
 - 1.1 If a longer cable is needed, Seakeeper offers a 10 m extension cable (P/N 30330) and a 25 m extension (P/N 30335).
2. The Furuno ethernet adapter cable connects to the 4-pin ethernet connection of 5" Touch Display back (Figure 2) to the RJ45 connection in the Furuno Ethernet Hub101 (Figure 3).

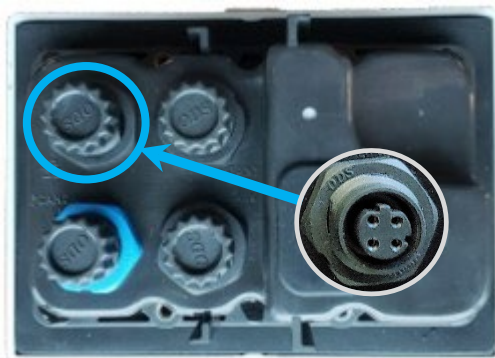


Figure 2: Seakeeper 5" Touch Display ethernet port

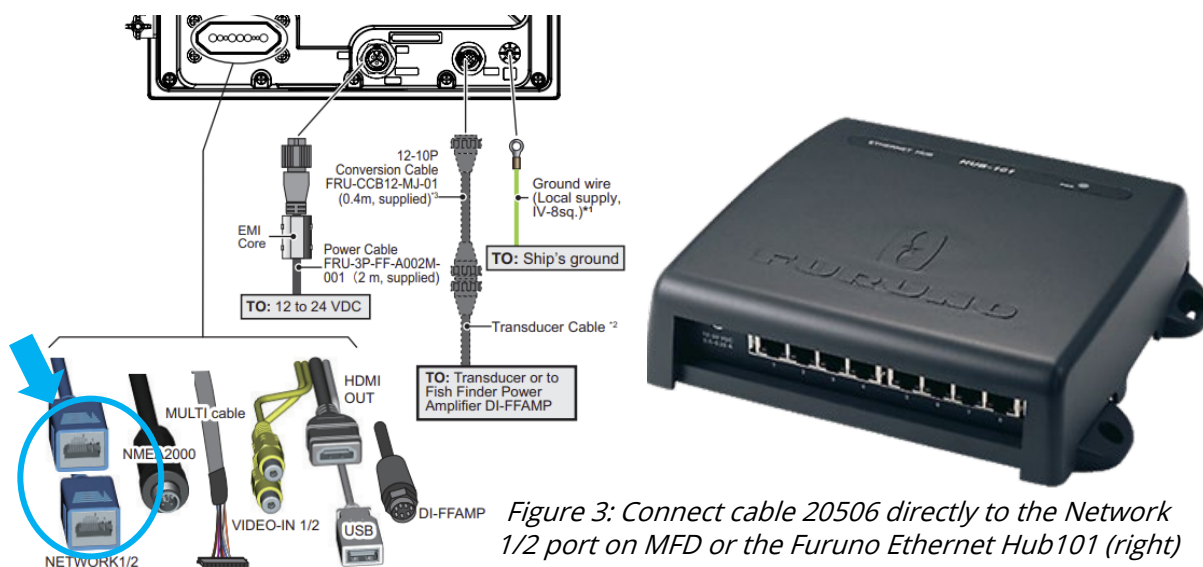


Figure 3: Connect cable 20506 directly to the Network 1/2 port on MFD or the Furuno Ethernet Hub101 (right)

3. Once hardware is connected and latest software loaded, cycle power to MFD and then the Seakeeper DC control power.

FURUNO AND SEAKEEPER COMPATIBILITY

PRODUCT ALL SEAKEEPER SERIES MODELS

4. Press Settings button (gears icon) on Seakeeper 5" Touch Display and select "Furuno" from MFD dropdown menu (Figure 4).



Figure 4: Seakeeper Settings Screen showing MFD dropdown menu

5. The Seakeeper app should populate in the home page screen as seen in Figure 5.

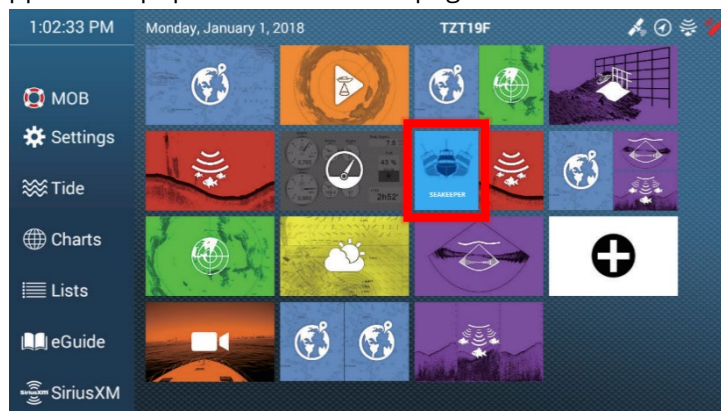


Figure 5: Furuno Home Page - with Seakeeper application icon

FURUNO AND SEAKEEPER COMPATIBILITY

PRODUCT ALL SEAKEEPER SERIES MODELS

CONNECTING TO A SEAKEEPER CONNECTBOX

1. Connect the Seakeeper ConnectBox to the Furuno MFD Ethernet Hub101 using two Seakeeper cables: a 10 m (32.8 ft) extension cable (P/N 30330), or a 25 m (82 ft)), or a 25 m cable (P/N

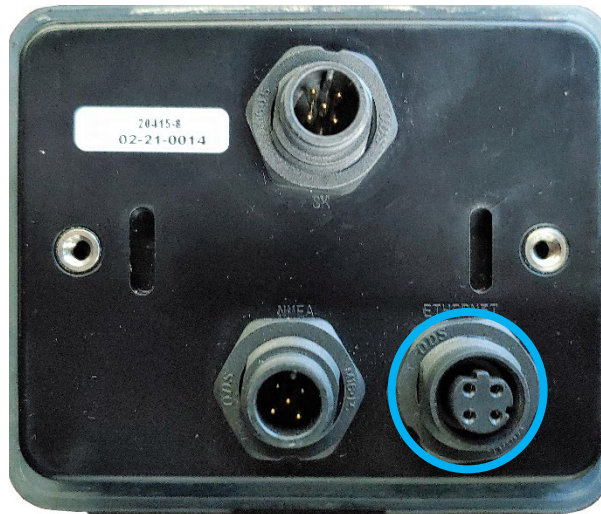


Figure 6: ConnectBox 4-pin ethernet port shown

30335), extension cable (P/N 30335), and a 2 m (6.5 ft) Furuno ethernet adapter cable (P/N 20506). Optional longer extension cables are available through Seakeeper dealer.

2. Once the hardware is connected, perform the following:
 - 2.1 Cycle DC control power to Seakeeper.
 - 2.2 Momentarily press ConnectBox ethernet button to verify spool bar LEDs strobe from right to left (DHCP server OFF mode).



MOMENTARILY PRESS ETHERNET
BUTTON



SPOOL BAR LEDs WILL STROBE FROM RIGHT TO
LEFT. ROUND LEDs WILL FLASH

FURUNO AND SEAKEEPER COMPATIBILITY



PRODUCT ALL SEAKEEPER SERIES MODELS

- 2.3 If spool bar LEDs strobe from left to right (DHCP server ON mode), press and hold ethernet button until spool bar LEDs strobe from right to left.

FURUNO AND SEAKEEPER COMPATIBILITY



PRODUCT ALL SEAKEEPER SERIES MODELS

3. Verify the Seakeeper app populates on the Furuno home screen (Figure 7).

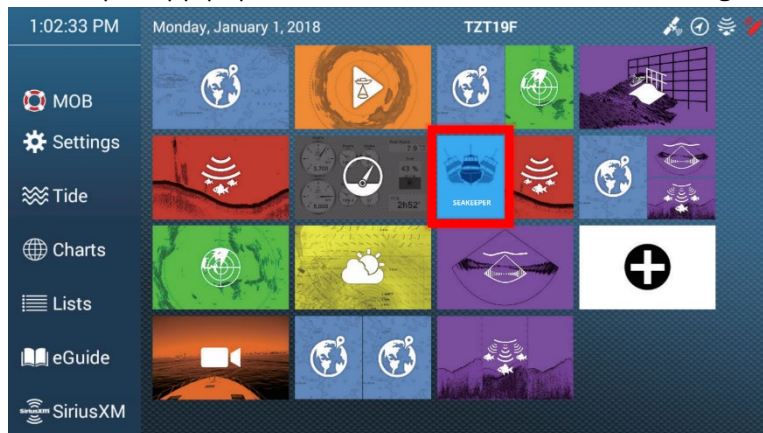


Figure 7: Furuno MFD Home Page – with Seakeeper Application Icon

FURUNO AND SEAKEEPER COMPATIBILITY



PRODUCT ALL SEAKEEPER SERIES MODELS

MULTI-SEAKEEPER SUPPORT

- 1. Verify each Seakeeper has unique Seakeeper ID:
 - 1.1 Seakeeper ID can be checked/changed by holding Settings button (gears icon) on 5" Touch Display for five seconds and then selecting the Seakeeper ID dropdown menu (Figure 8).

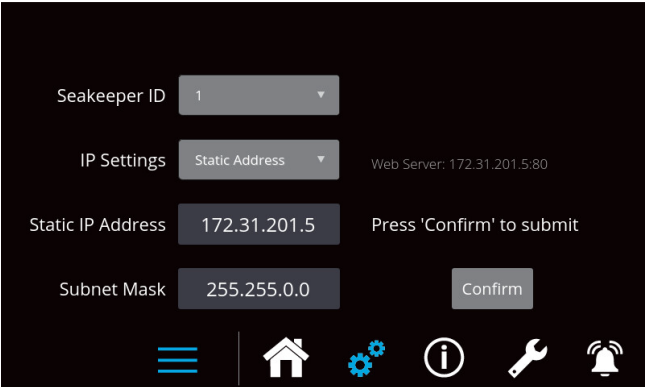


Figure 8: Furuno multi-Seakeeper server settings screen for Seakeeper ID 1

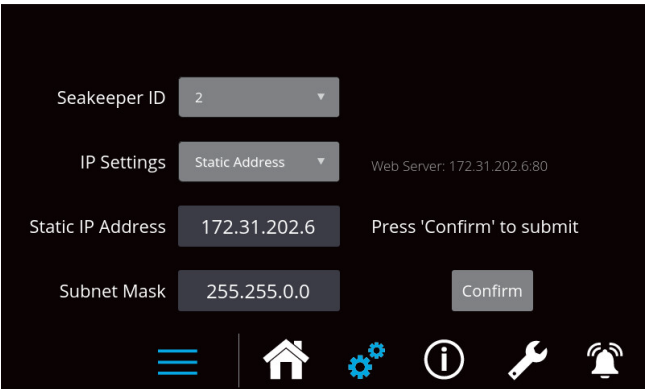


Figure 9: Furuno multi-Seakeeper server settings screen for Seakeeper ID 2

FURUNO AND SEAKEEPER COMPATIBILITY



PRODUCT ALL SEAKEEPER SERIES MODELS

2. Multiple Seakeeper display screens can be seen in Figure 10. All the Seakeepers can be operated and monitored from the Furuno home screen. Toggle arrows atop the screen enable navigation to each Seakeeper's respective screen where details of each can be viewed.

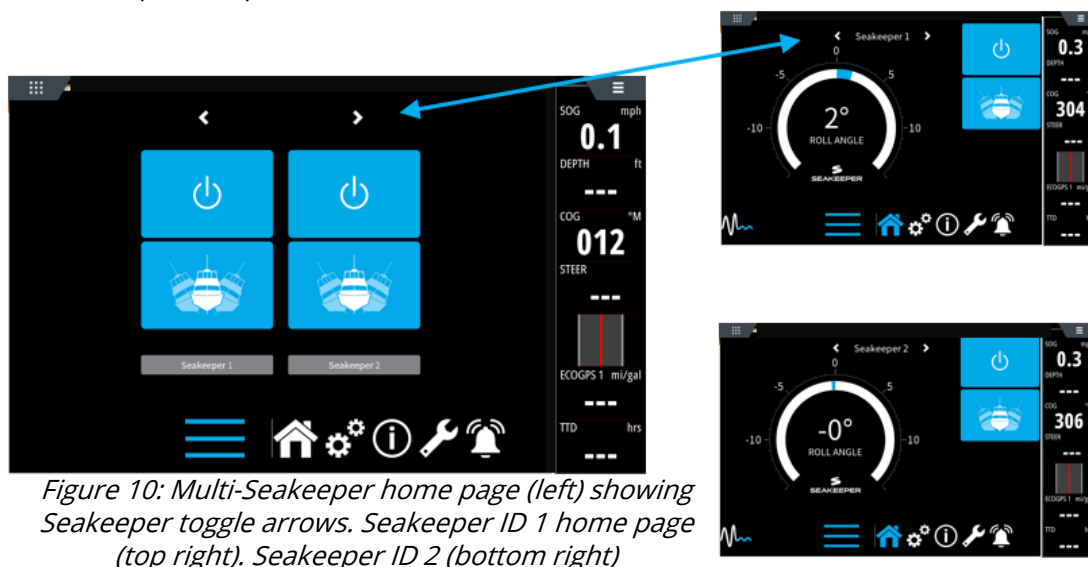


Figure 10: Multi-Seakeeper home page (left) showing Seakeeper toggle arrows. Seakeeper ID 1 home page (top right). Seakeeper ID 2 (bottom right)

TROUBLESHOOTING

1. If the Seakeeper app does not appear on the Furuno home screen, the following steps should be taken:
 - 1.1 Ensure physical cable connections secure at back of Seakeeper display, back of MFD, and at any connectors or hubs.
 - 1.2 Update both MFD and Seakeeper display software to latest releases.
 - 1.3 Restart the MFD and then cycle DC control power to the Seakeeper.
2. For additional support, contact Seakeeper Product Support Team at support@seakeeper.com.