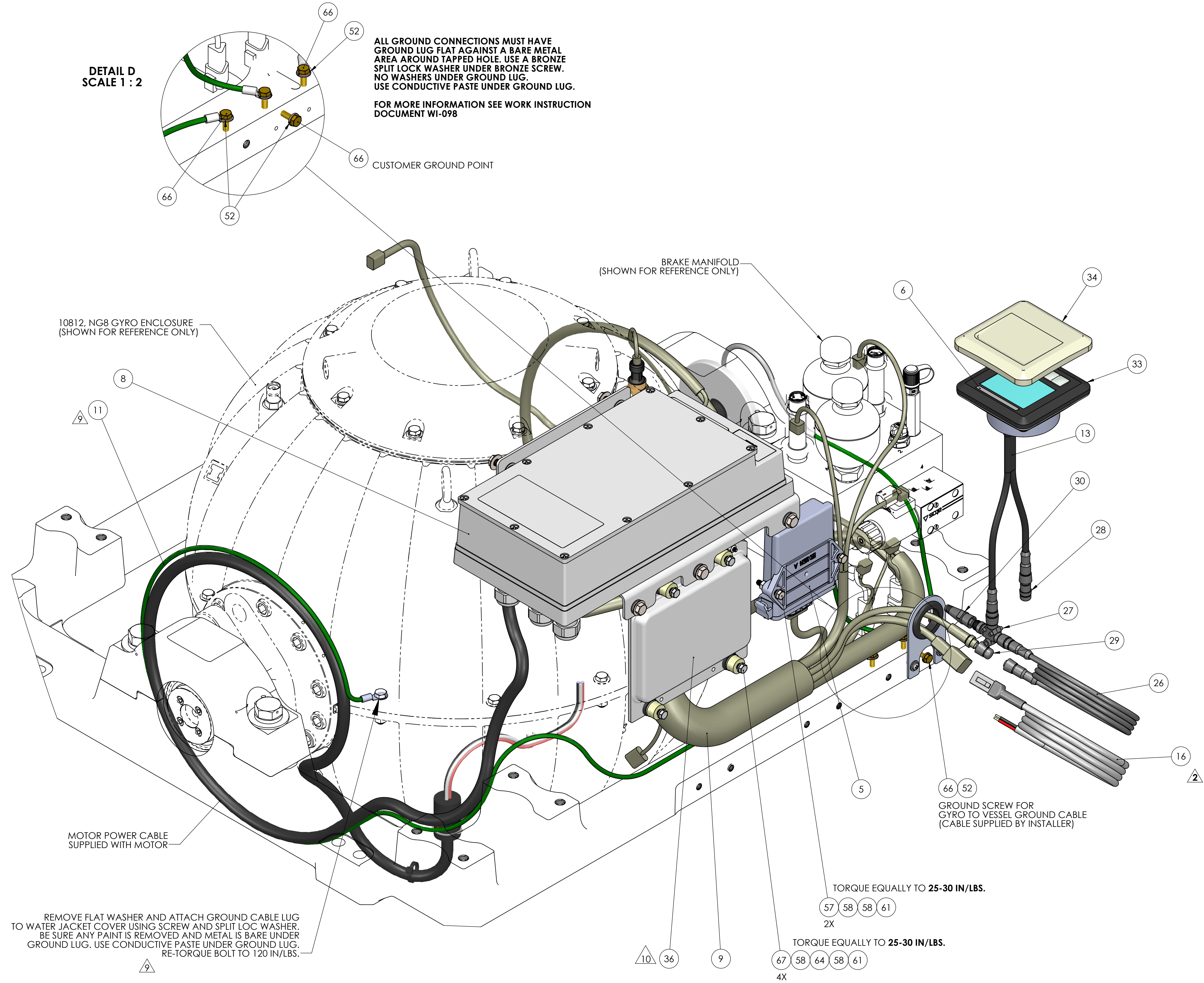


- NOTES:
- 1) THIS DWG. REPRESENTS A SUB-GROUP OF COMPONENTS WITHIN THE NG9 ELECTRONICS SYSTEM BILL OF MATERIAL AND DOES NOT NECESSARILY REPRESENT THE ACTUAL ASSEMBLY PROCEDURE. THIS DWG DOES PROVIDE TECHNICAL INFORMATION REGARDING COMPONENT LOCATION, SUGGESTED WIRE HARNESS ROUTING, AND FASTENER APPLICATION.
- 2) ITEMS SHOWN IN PHANTOM ARE FOR REFERENCE ONLY. THESE REFERENCE ITEMS ARE PART OF OTHER SUB-GROUPS AND ARE DISPLAYED IN THIS DWG TO SHOW WIRE HARNESS CONNECTION POINTS.
- 3) ITEMS 6,7,15,18,23, 24, 25, 26, 34, 35, 36, 37, AND 38 ARE SHOWN FOR BILL OF MATERIAL REFERENCE ONLY. THESE COMPONENTS SHIP WITH THE GYRO SEPARATELY.

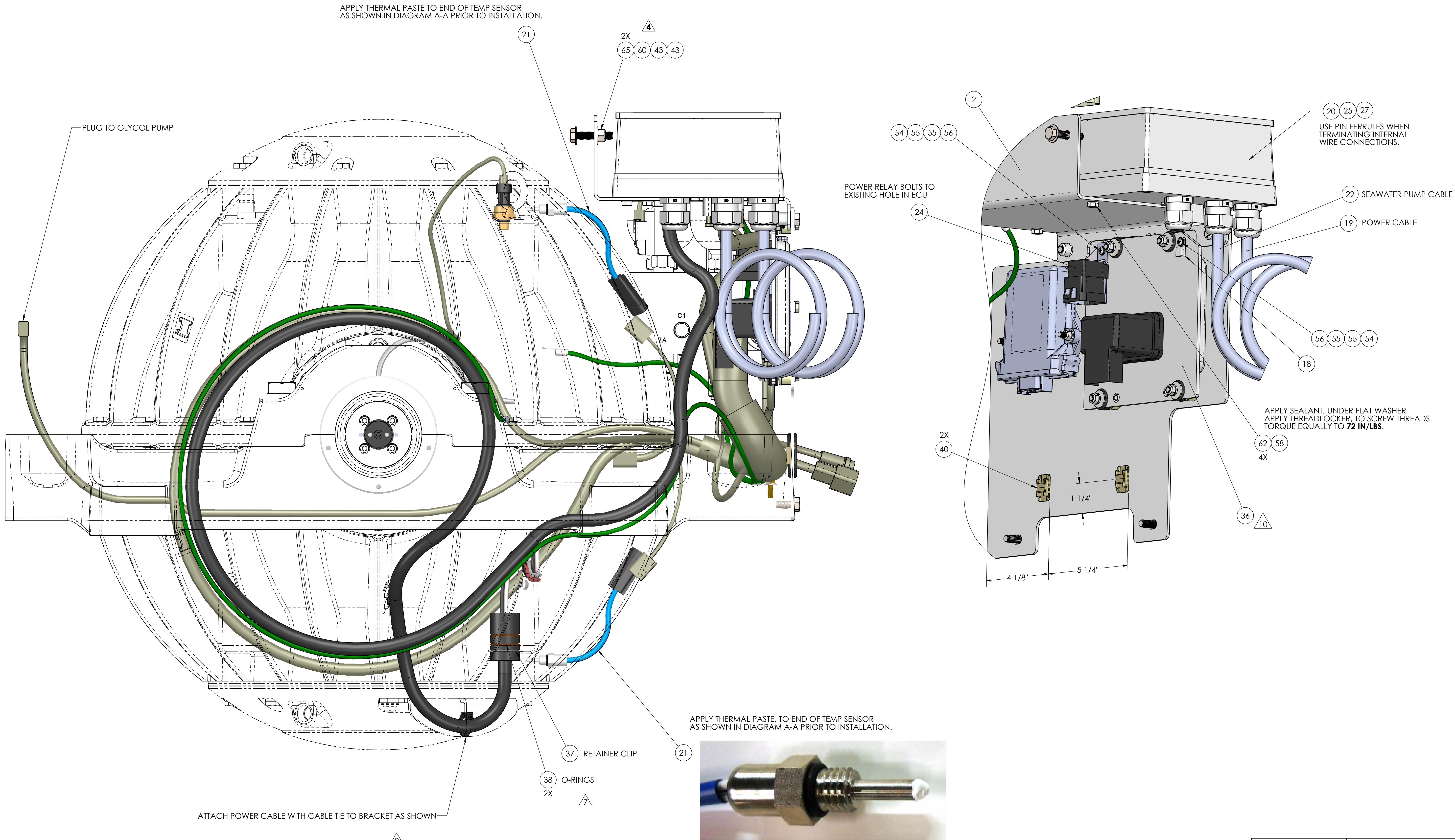


REV.	ECN NO.	ZONE	DESCRIPTION	DATE	APPROVED
1	0174		RELEASED FOR PRODUCTION	3/6/2014	RSK
2	0204		ADDED ITEM 18 TO BILL OF MATERIAL	7/23/2014	RSK
3	0218		UPDATED GYRO CONTROL DISPLAY AND SUNCOVER	2/9/2015	RSK
4	0274		THRU BOLTED MOTOR DRIVE BOX BRACKET TO FRAME CROSSBAR	4/27/2015	RSK
5	0323		SEAKEEPER BRANDING CHANGE ON DISPLAY LABEL AND DRIVE BOX LABEL	5/18/2015	SAC
6	0448		GROUND CABLES CHANGED SIZE FROM 4AWG TO 10AWG. REPLACED ALL SERRATED TOOTH LOCK WASHERS WITH SPLIT LOCK WASHERS UNDER GROUND SCREWS	10/4/2016	SAC
7	0496	B5, SHT 2	O-RINGS AND RETAINER CLIP FOR MOTOR FEEDTHRU ADDED TO BOM LIST, NOW SUPPLIED BY SEAKEEPER	2/3/2017	SAC
8	0479		SENSATA BRAND VACUUM SENSOR REPLACED WITH WASCO BRAND SENSOR	4/11/2017	SAC
9	0477	A8, A6 SHT2	THE SPHERE ENCLOSURE GROUND CABLE 20220 WAS SHORTENED 1' AND NOW TERMINATES AT THE EQUATOR. ADDED PROTECTIVE BRACKET TO LOWER WATER JACKET FOR MOTOR POWER CABLE	4/27/2017	SAC
10	0509		ECU #30234 WAS REPLACED WITH A PROGRAMMABLE VERSION WITH SECURITY FEATURES, #30302	5/17/2017	SAC

69	70061	THERMAL JOINT COMPOUND - WAKEFIELD TYPE 120	---	AR	
68	70054	THREAD LOCKER, LOCTITE #243, BLUE	---	AR	
67	60335	SCREW, HEX HD CAP M6-1.0 X 40MM FULL TD	316 SS	4	-
66	60278	HEX HD CAP SCREW, M6-1.0 X 16mm LG, FULL THREAD	BRASS	5	-
65	60267	HEX NUT, NYLOK M8-1.2 SS	316 SS	2	-
64	60260	STAND OFF, NYLON, .31X.75X.5	NYLON	4	-
63	60259	BTN SKT HD MACHINE SCREW M5-.8 X 12mm LG	18-8 SS	3	-
62	60256	HEX HEAD CAP SCREW, M6-1.0 X 16mm LG	316 SS	4	-
61	60255	HEX NUT, NYLOK M6-1.0	316 SS	6	-
60	60247	HEX HD CAP SCREW M8-1.25 X 40mm LG 316SS	316SS	2	-
59	60246	HEX HD CAP SCREW M8-1.25 X 20mm LG, 316SS	316SS	5	-
58	60223	WASHER, FLAT, M6 12MM OD	316SS	16	-
57	60222	HHCS M6-1.0 X 35mm LG FULL THREAD	316 SS	2	-
56	60177	SCREW, PHILLIPS HD PAN 8-32 X 0.63	18-8 SS	2	-
55	60162	FLAT WASHER, #8	316 SS	4	-
54	60161	NUT, NYLOCK HEX 8-32	18-8 SS	2	-
53	60105	SCREW, SOCKET HD CAP 10-24 X 2.0 GRD8	BLK OXIDE STL	8	-
52	60096	WASHER, SPLIT LOC .25 ID	SILICON BRONZE	5	-
51	60087	SCREW, PHILLIPS HD PAN 8-32 X 0.38	18-8 SS	1	-
50	60061	PAN HD MACHINE SCREW 10-24 X .50 LG	18-8SS	2	-
49	60038	FLAT WASHER, M4	18-8 SS	2	-
48	60037	SPRING LOCK WASHER, M4	18-8 SS	2	-
47	60036	BUTTON SKT HD CAP SCREW, M4-.7 X 20MM LG	18-8 SS	2	-
46	60034	SCREW, SOCKET HD CAP M4-.7 X 16MM FULL TD	18-8SS	2	-
45	60033	FLAT WASHER #10	316SS	5	-
44	60015	WASHER, HI COLLAR LOC #10	ALLOY STEEL	8	-
43	60003	WASHER, FLAT TYPE B NARROW 0.31	316 SS	9	-
42	40367	GROMMET, PUSH IN 1-1/4 ID X 3/32 PANEL THKNSS.	SBR RUBBER	1	-
41	40366	MOTOR DRIVE COVER LABEL	ANODIZED ALUM.	1	-
40	40271	CLICK BOND CABLE TIE ANCHOR, TRANSVERSE BASE	COMP	2	-
39	40250	SILI-THANE 803 MARINE SEALANT	---	AR	
38	40142	O-RING, SIZE 024 A75 DUROMETER	VITON	2	-
37	40107	RETAINING RING, EXTERNAL, 1.25 DIA	SS	1	-
36	30302	ECU ASSEMBLY INCLUDING ISOLATION BUSHINGS	---	1	-
35	30288	VACUUM SENSOR, WASCO	BRASS	1	-
34	30269	SEAKEEPER DISPLAY SUNCOVER	---	1	-
33	30268	SEAKEEPER CONTROLLER DISPLAY	---	1	-
32	30255	RING TERMINAL, 16-14 GA SIZE #8 INSULATED, BLUE	---	1	-
31	30254	RING TERMINAL, 12-10 GA SIZE #8 INSULATED, YELLOW	---	1	-
30	30249	TERMINATOR, NMEA 2000 MICRO, 120OHM FEMALE	PLASTIC	1	-
29	30247	AMPHENOL LTW PLASTIC CAP, FEMALE	---	1	-
28	30246	AMPHENOL LTW PLASTIC CAP, MALE	---	1	-
27	30244	DISPLAY CABLE T- ADAPTOR	---	1	-
26	30243	CABLE, MALE/FEMALE, NMEA 2000 PLASTIC MICRO, 25M LG.	---	1	-
25	30242	FERRULE 12 AWG, .47" PIN LENGTH	---	3	-
24	30241	POWER RELAY	---	1	-
23	30240	FERRULE 14 AWG, .47 PIN LENGTH	---	2	-
22	30239	MARINE GRADE ELECTRICAL CABLE, 14-3 SEAWATER PUMP	---	1	-
21	30235	THERMISTOR, GE WTS 1797	316 SS	2	-
20	30197	FERRULE 10 AWG, .47" PIN LENGTH	---	2	-
19	30179	MARINE GRADE ELECTRICAL CABLE, 10-3 AC POWER	---	1	-
18	30011	CABLE TIE ANCHOR CLIP	---	2	-
17	30003	POSITION MARKER	---	1	-
16	20248	GYRO DC INPUT POWER CABLE ASSEMBLY, 5M LG.	---	1	-
15	20232	NG9 FLYWHEEL MOTOR ROTOR	---	1	-
14	20228	GROUND CABLE ASSY, 4 AWG, 13" LG.	---	1	-
13	20223	CANvu 355 DISPLAY INTERFACE CABLE	---	1	-
12	20222	GIMBAL ANGLE SENSOR & CONNECTOR ASSEMBLY	---	1	-
11	20220	GROUND CABLE ASSY, 4 AWG, 75" LG.	---	1	-
10	20219	GROUND CABLE ASSY, 4 AWG, 18" LG.	---	1	-
9	20218	SEAKEEPER 9 GYRO WIRING HARNESS	---	1	-
8	20216	SEAKEEPER MOTOR DRIVE BOX	ALUMINUM	1	-
7	20212	NG9 FLYWHEEL MOTOR STATOR	---	1	-
6	20208	DISPLAY LABEL	---	1	-
5	20206	CAN IMU ASSEMBLY	---	1	-
4	11023	SEAKEEPER 9 ELECTRONICS BASEPLATE	5052 ALUM	1	-
3	11021	SEAKEEPER 9 WIRE BULKHEAD PLATE	.100 ALUM. SHT.	1	-
2	10852	SEAKEEPER 9 MOTOR DRIVE BRACKET	5052 ALUM	1	-
1	10832	SEAKEEPER 9 GIMBAL ANGLE SENSOR MOUNT FINISH MACHINED	CAST ALUM	1	-

ITEM NO.	PART NO.	DESCRIPTION	MATERIAL	QTY	NOTE
<div><div><div>PROPRIETARY AND CONFIDENTIAL</div><div>THE INFORMATION CONTAINED IN THIS DRAWING IS THE SOLE PROPERTY OF SEAKEEPER INCORPORATED. ANY REPRODUCTION IN PART OR AS A WHOLE WITHOUT THE WRITTEN PERMISSION OF SEAKEEPER IS PROHIBITED.</div></div><div><div>SEAKEEPER</div><div>Seakeeper Inc. 44425 Pecan Court, Suite 151 California, MD 20619</div><div>NAME:</div><div>SEAKEEPER 9 ELECTRONIC SUB SYSTEM ASSEMBLY-SERVICE</div><div>DWG NUMBER</div><div>20217</div><div>REV. NO / SHEET NO.</div><div>10 / 3</div></div></div>					
WEIGHT - LBS:		DRAWN: SAC	DATE: 06MAR14		
MATERIAL: ---		ENG APPR:	DATE:		
		PROD APPR:	DATE:		

REV NO.	ECN NO.	ZONE	DESCRIPTION	DATE	APPRVD.
-	-	-	See Sheet1	-	-



PROPRIETARY AND CONFIDENTIAL THE INFORMATION CONTAINED IN THIS DRAWING IS THE SOLE PROPERTY OF SEAKEEPER INCORPORATED. ANY REPRODUCTION IN PART OR AS A WHOLE WITHOUT THE WRITTEN PERMISSION OF SEAKEEPER IS PROHIBITED.		SEAKEEPER Seakeeper Inc. 44425 Pecan Court, Suite 151 California, MD 20619	
WEIGHT - LBS:	DRAWN: SAC	DATE: 06MAR14	NAME: SEAKEEPER 9 ELECTRONIC SUB SYSTEM-SERVICE
MATERIAL: ---	ENG APPR: ---	DATE: ---	DWG NUMBER 20217
PROD APPR: ---	DATE: ---	REV. NO. 10	SHEET NO. 2 OF 3

8 7 6 5 4 3 2 1

F

E

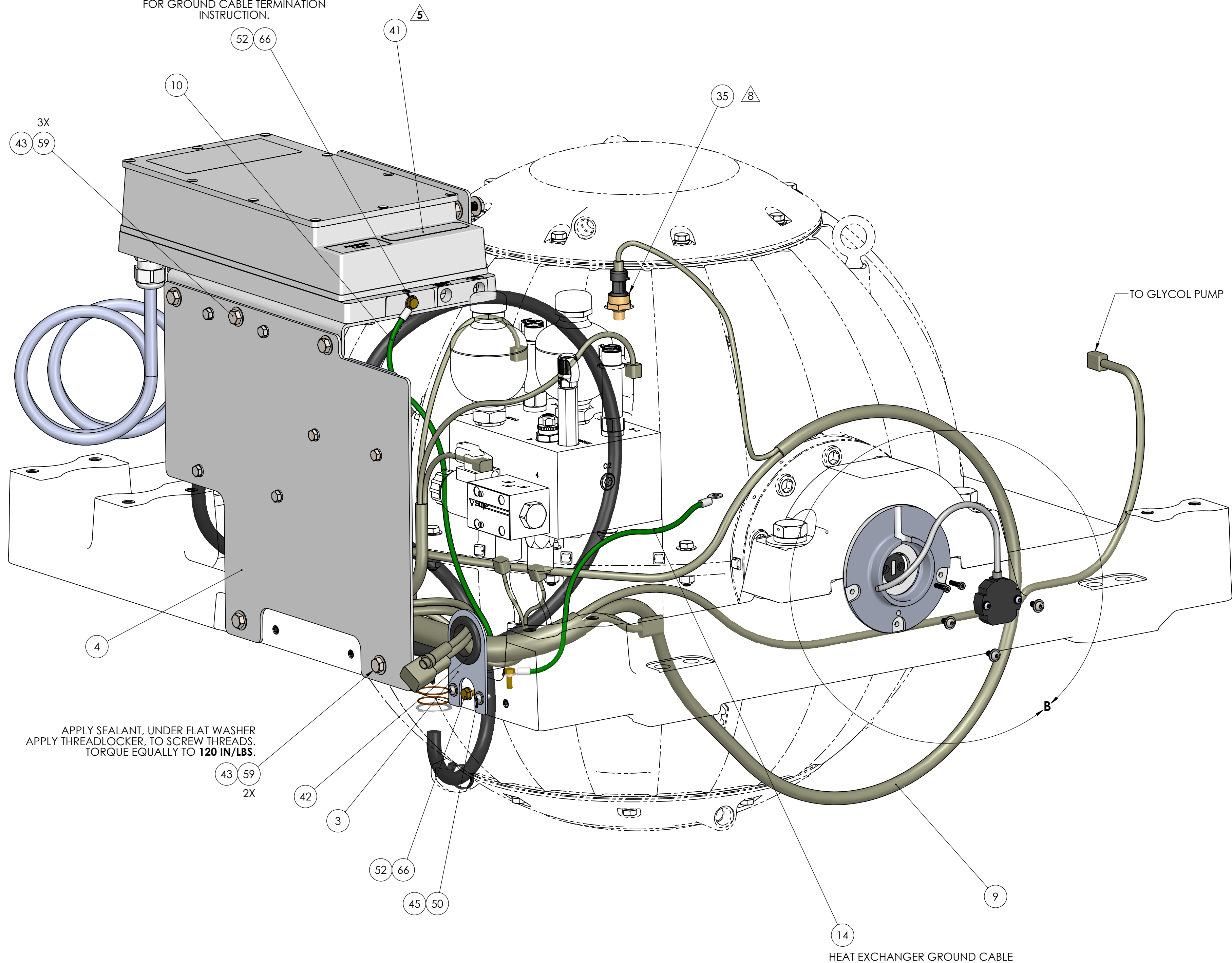
D

C

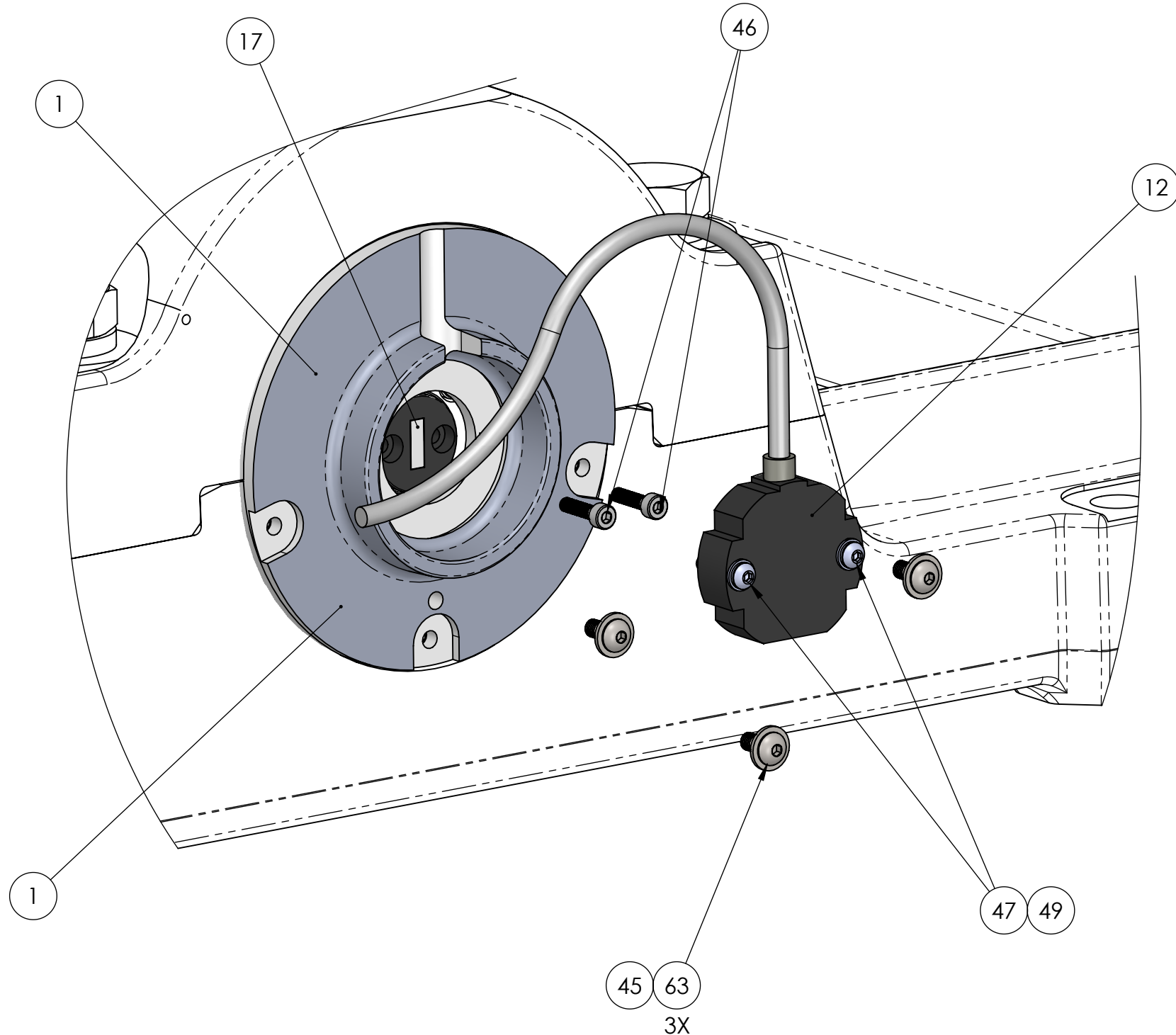
B

A

SEE DETAIL VIEW D ON SHEET 1
FOR GROUND CABLE TERMINATION
INSTRUCTION.



APPLY THREADLOCKER TO
SCREW THREAD. SNUG LIGHTLY



APPLY THREADLOCKER, TO
SCREW THREAD. SNUG LIGHTLY

APPLY THREADLOCKER, TO
SCREW THREAD. SNUG LIGHTLY

DETAIL B
SCALE 1 : 1.5

PROPRIETARY AND CONFIDENTIAL
THE INFORMATION CONTAINED IN THIS
DRAWING IS THE SOLE PROPERTY OF
SEAKEEPER INCORPORATED. ANY
REPRODUCTION IN PART OR AS A WHOLE
WITHOUT THE WRITTEN PERMISSION OF
SEAKEEPER IS PROHIBITED.

SEAKEEPER
Seakeeper Inc. 44425 Pecan Court, Suite 151 California, MD 20619

DRAWN: **SAC** DATE: **06MAR14**
ENG APPR: DATE:
PROD APPR: DATE:

NAME:
**SEAKEEPER 9 ELECTRONICS SUB
SYSTEM-SERVICE**

DWG NUMBER
20217

REV. NO. | SHEET NO.
10 | **3 OF 3**

8 7 6 5 4 3 2 1