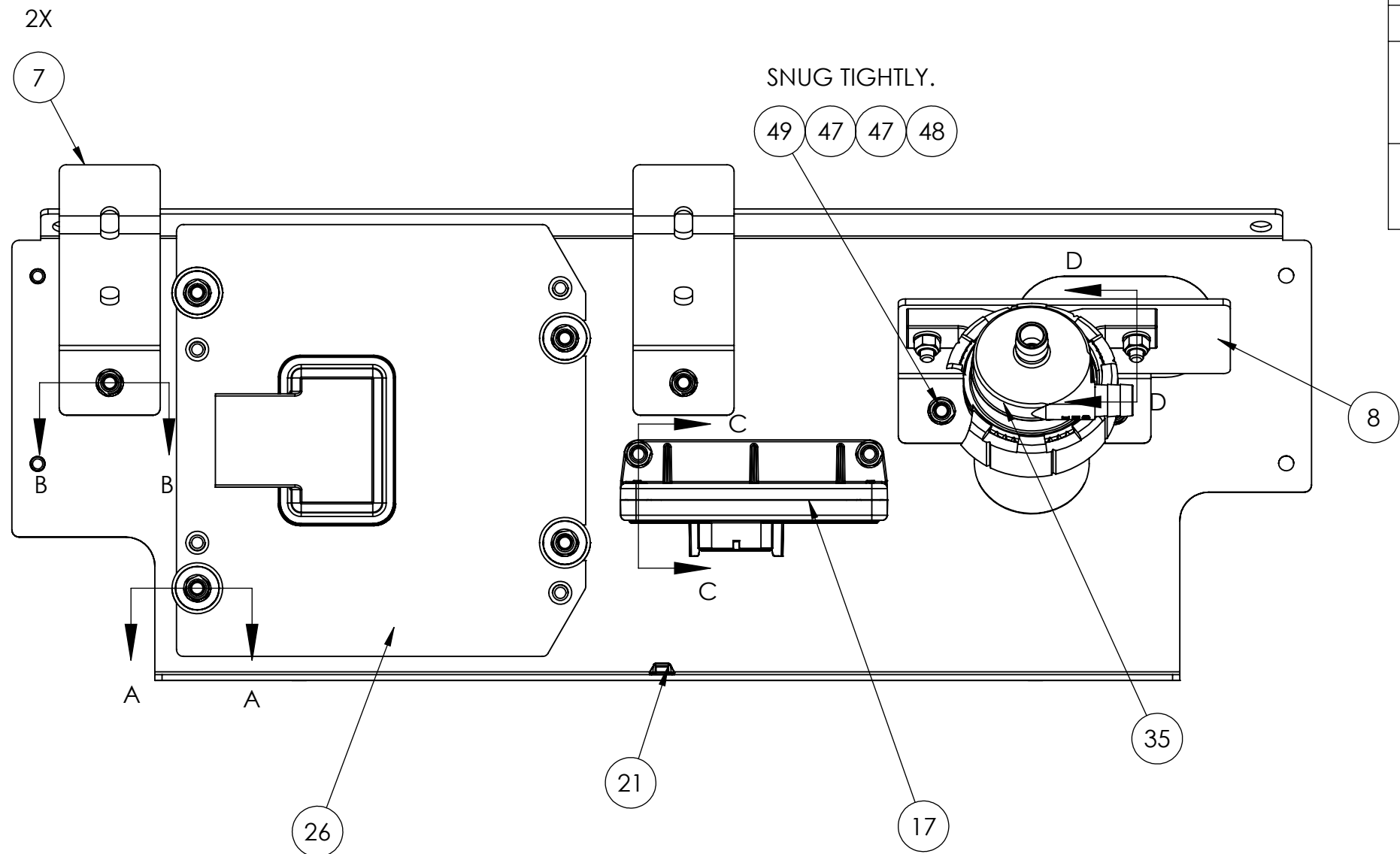
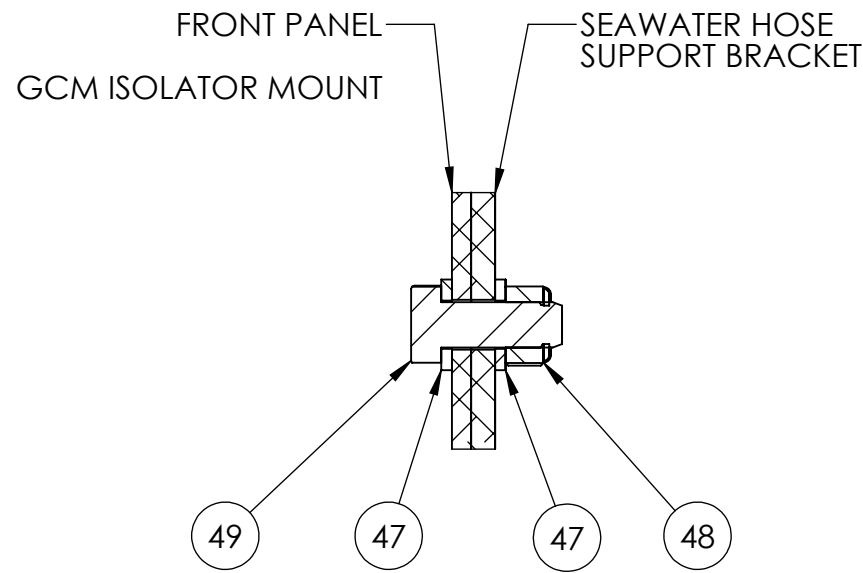
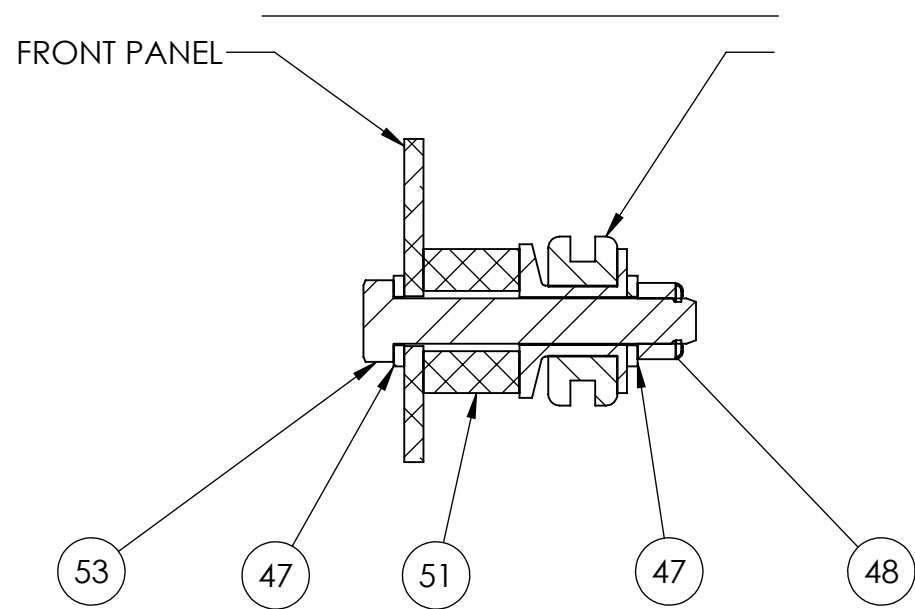


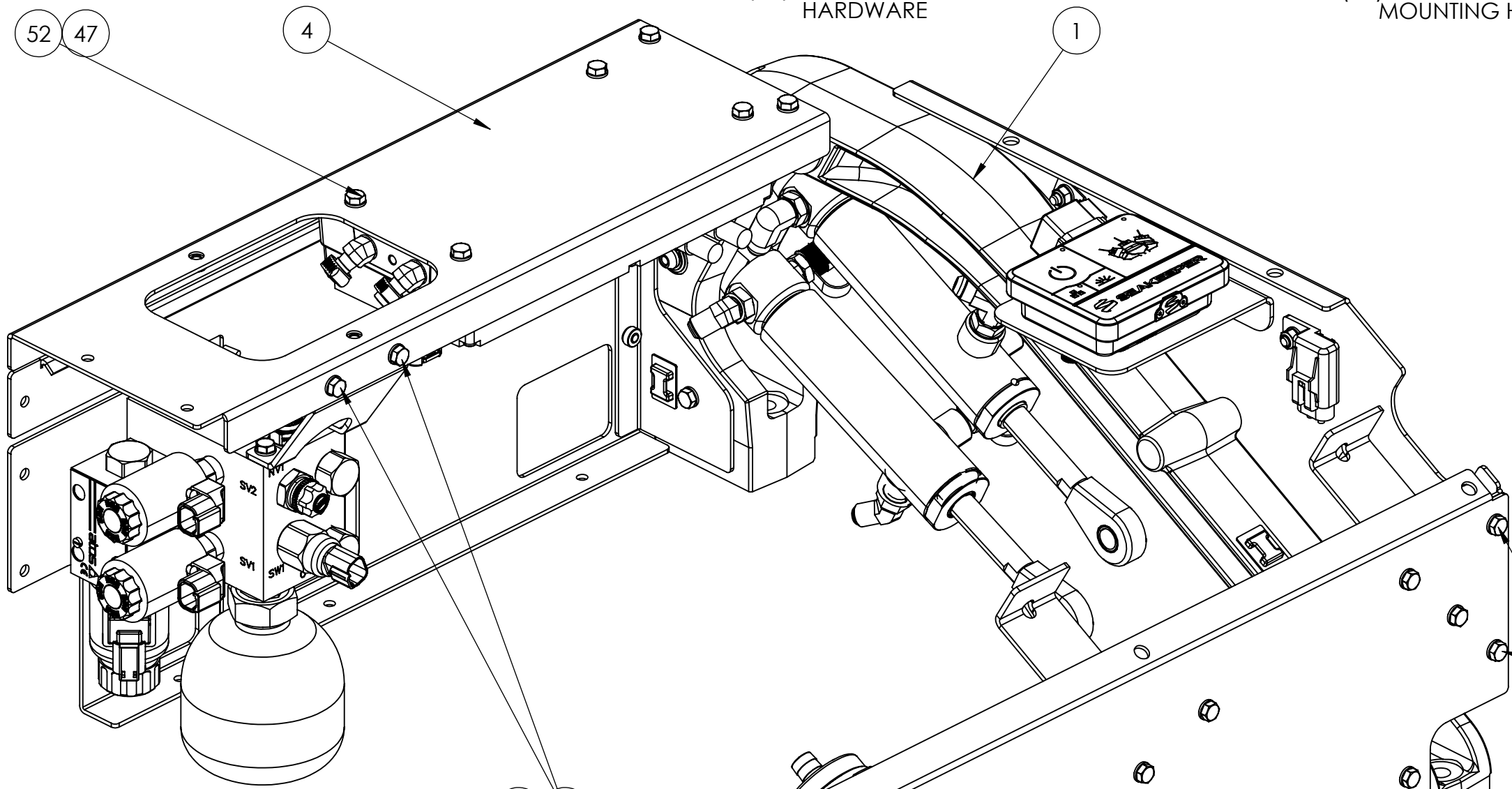
NOTES:

1. WHEN FILLING MANIFOLD WITH OIL, CHARGE TO A STATIC PRESSURE OF 345 - 350 PSI.
2. THE ACCUMULATOR IS TO BE PRE-CHARGED WITH NITROGEN TO 75 PSI, +/- 3 PSI.
3. HOSE CONNECTION PORTS ARE STAMPED TC-BE, TC-RE, BC-BE, AND BC-RE. ACTUAL HOSE ROUTING MAY DIFFER FROM DRAWING.
4. THE COLOR STANDARD FOR THE CABLE TIE HOSE MARKERS ARE AS FOLLOWS:
BLUE - UPPER CYLINDERS, REAR TRUNNION END PORT - MANIFOLD PORT TC-BE
YELLOW - UPPER CYLINDERS, FRONT ROD END PORT - MANIFOLD PORT TC-RE
RED - LOWER CYLINDERS, REAR TRUNNION END PORT - MANIFOLD PORT BC-BE
GREEN - LOWER CYLINDERS, FRONT ROD END PORT - MANIFOLD PORT BC-RE

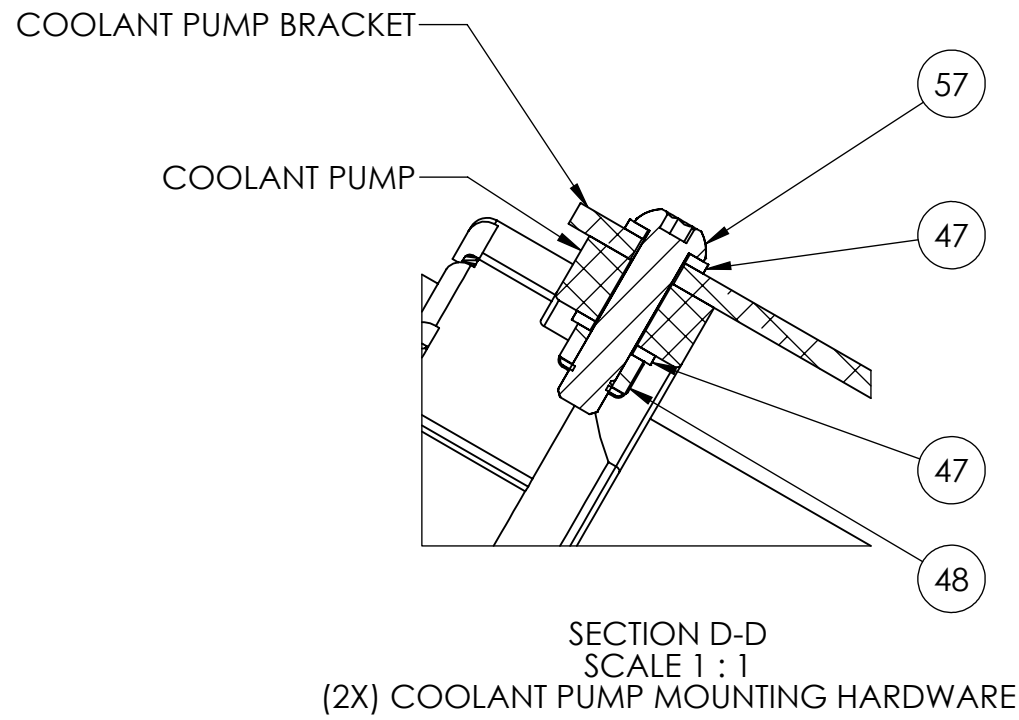
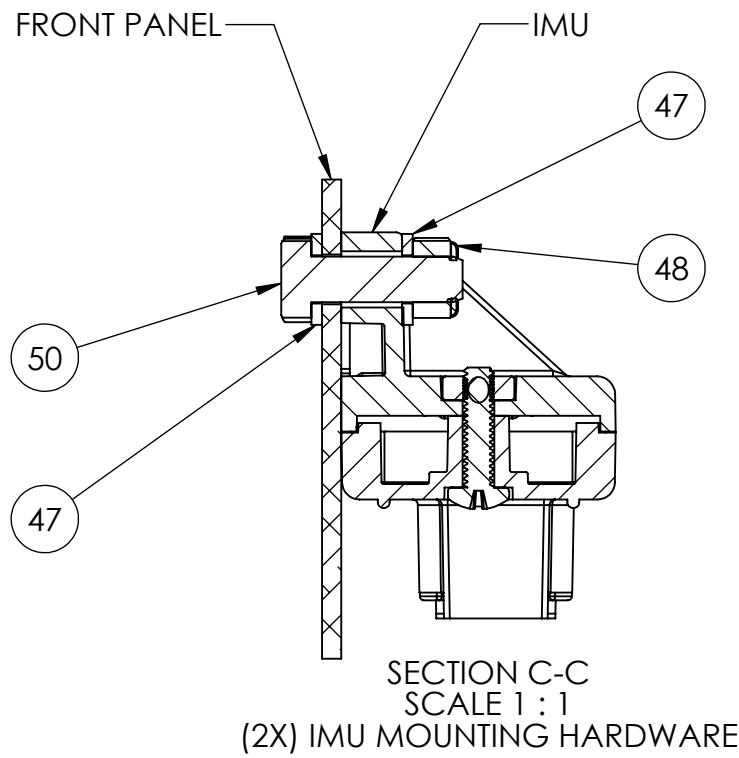
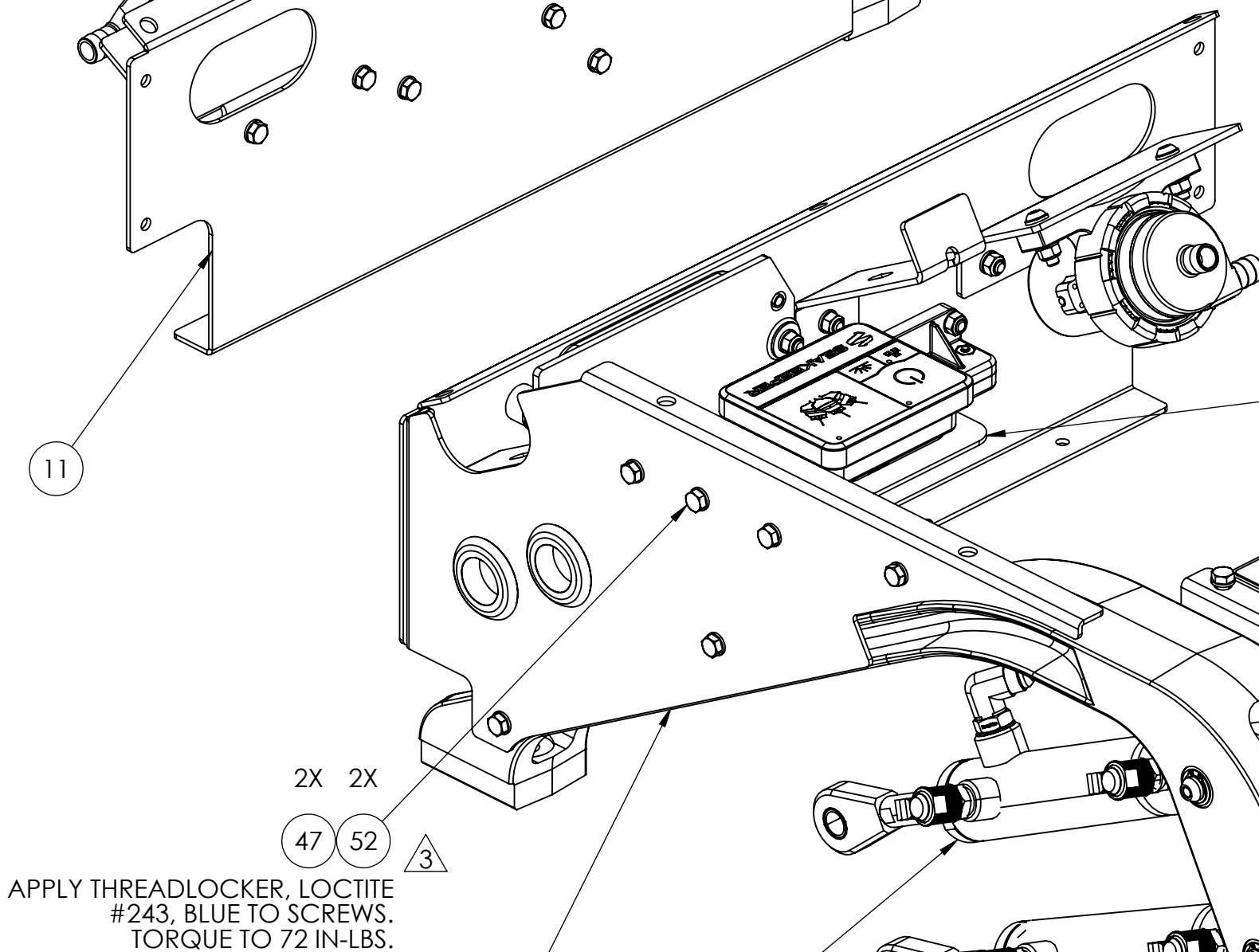


APPLY THREADLOCKER, LOCTITE #243, BLUE TO SCREWS. TORQUE TO 72 IN-LBS.

6X 6X



APPLY THREADLOCKER, LOCTITE #243, BLUE TO SCREWS. TORQUE TO 72 IN-LBS.



BRAKE & COOLING HOSES AND ELECTRICAL CABLES HIDDEN

APPLY THREADLOCKER, LOCTITE #243, BLUE TO SCREWS. TORQUE TO 72 IN-LBS.

REV NO.	ECN NO.	ZONE	DESCRIPTION	DATE	DRAWN BY	APRVD. BY
1	906		INITIAL RELEASE	08OCT2021	TWD	EMS
2	906		REMOVED CONNECT BOX COMPONENTS. ADDED TORQUE TO POWER CABLE BOLT AND HOSE FITTINGS. CHANGED GCM SPACER TO NYLON.	12JUL2022	RMF	TWD
3	1059		B5, B6, 2-A5, 2-A6, 2-B1, 2-B2, 2-B6 ADDED 12930-CONNECTBOX BRACKET AND RELATED HARDWARE; 20415-CONNECTBOX ASSEMBLY AND CABLES 30244, 30249, 30361.	10MAR2023	RMF	TMD

63	70079	GREASE, MOLY/GRAPHITE NLGI GRADE 2	AR
62	70078	ANTI-OXIDANT COMPOUND	AR
61	70054	THREADLOCKER, LOCTITE #243, BLUE	AR
60	70047	LOCTITE, THREAD SEALANT 564 , 50ml TUBE	AR
59	60653	THUMB SCREW, M4-0.7 X 16MM LG, KNURLED PLASTIC, 18-8 SS	2
58	60652	SPACER, M4 SCREW, 4.2MM ID X 8 MMOD X 9MM LG	2
57	60543	SCREW, SKT HD BTN M6X1-25MM 316 SS	2
56	60467	RETAINING RING, EXTERNAL .50 DIA. SHAFT	4
55	60464	SHIM WASHER, .75 OD X .50 ID X .025 THK	8
54	60352	SCREW, HEX HD CAP M6-1.0 X 12MM FULL TD	1
53	60335	SCREW, HEX HD CAP M6-1.0 X 40MM FULL TD	4
52	60294	SCREW, HEX HD CAP M6-1.0 X 12MM LG	16
51	60260	STAND OFF, NYLON, 3.1 X .75 X .5 LONG	4
50	60257	SCREW, HEX HD CAP M6-1.0 X 20MM FULL TD	2
49	60256	HEX HEAD CAP SCREW, M6-1.0 X 16mm LG	12
48	60255	HEX NUT, NYLOK M6-1.0	14
47	60223	WASHER, FLAT, M6 12MM OD	50
46	60096	WASHER, SPLIT LOC .25 ID	1
45	50273	ACCUMULATOR, 0.32 L, SAE-8 PORT	1
44	50249	SEAKEEPER 2/3 BRAKE MANIFOLD ASSEMBLY	1
43	50248	SEAKEEPER 2 HYDRAULIC HOSE ASSEMBLY, UPPER CYLINDER, CLEVIS END	1
42	50247	SEAKEEPER 2 HYDRAULIC HOSE ASSEMBLY, UPPER CYLINDER, ROD END	1
41	50246	SEAKEEPER 2 HYDRAULIC HOSE ASSEMBLY, LOWER CYLINDER, CLEVIS END	1
40	50245	SEAKEEPER 2 HYDRAULIC HOSE ASSEMBLY, LOWER CYLINDER, ROD END	1
39	50211	HYD ADAPTOR, 06 MJIC X 06 MORB, 90 EL FORGED	2
38	50209	HYD. ADAPTOR, 6802-06-06, MJIC X MORB, 45 EL	2
37	50195	SEAKEEPER 2 LOWER BRAKE CYLINDER WITH ROD END AND BUSHING	1
36	50194	SEAKEEPER 2 UPPER BRAKE CYLINDER WITH ROD END AND BUSHING	1
35	40501	COOLING PUMP, 12VDC, .50 INLET X .38 OUTLET, WATERPROOF	1
34	40482	HOSE BARB FITTING, 3/8 X 1/4 NPT MALE, 45 DEGREE ELBOW	3
33	40478	CLEVIS PIN BUSHING, .63 OD X .50 ID X .75 LG	6
32	40398	GROMMET, PUSH-IN 1" ID x .125" PANEL THK	2
31	40109	COOLANT HOSE, 3/8" ID X 51.5" LONG	1
30	40109	COOLANT HOSE, 3/8" ID X 14" LONG	1
29	40109	COOLANT HOSE, 3/8" ID X 12" LONG	1
28	40047	HOSE CLAMP SIZE -.04, .31 BAND WIDTH, 301SS	4
27	30361	CABLE, 1FT. MALE/FEMALE, NMEA 2000 PLASTIC MICRO	1
26	30342	GCM ASSEMBLY WITH BOOT LOAD SECURITY -MY17A MARINE SECM70	1
25	30259	12VDC POWER RELAY	1
24	30249	TERMINATOR, NMEA 2000 MICRO, 120OHM FEMALE	1
23	30244	DISPLAY CABLE T- ADAPTOR	1
22	30016	LARGE CLICK BOND WIRE TIE ANCHOR	4
21	30015	SMALL CLICK BOND WIRE TIE ANCHOR	1
20	20459	SEAKEEPER 2/3 DC SEAWATER PUMP SWITCHING HARNESS	1
19	20415	CONNECTBOX MK1 ASSEMBLY	1
18	20365	SEAKEEPER 2 WIRE HARNESS ASSEMBLY	1
17	20350	CAN IMU 2	1
16	20344	GROUND CABLE ASSY, 10 AWG, 4.5" LG.	1
15	20336	SEAKEEPER 2 DC POWER CABLE, 2AWG X 12FT, BLACK	1
14	20335	SEAKEEPER 2 DC POWER CABLE, 2AWG X 12FT, RED	1
13	20260	SEAKEEPER DC MOTOR DRIVEBOX	1
12	12930	SEAKEEPER 2 BOLT ON BRACKET, CONNECTBOX	1
11	12574	SEAKEEPER 2 FRONT PANEL (PUSH PINS), CONNECTBOX	1
10	12573	SEAKEEPER 2 LEFT SIDE PANEL, CONNECTBOX	1
9	11797	SEAKEEPER 2 REAR COVER PANEL	1
8	11562	SEAKEEPER 2 COOLANT PUMP BRACKET	1
7	11561	SEAKEEPER 2 SEAWATER HOSE SUPPORT BRACKET	2
6	11558	SEAKEEPER 2 BRAKE ARM INSIDE SUPPORT PANEL	1
5	11555	SEAKEEPER 2 MANIFOLD SUPPORT BRACKET	1
4	11554	SEAKEEPER 2 CROSSMEMBER CHANNEL	1
3	11553	SEAKEEPER 2 REAR MANIFOLD PANEL	1
2	11548	SEAKEEPER 2 BRAKE CYLINDER PIN, REAR PIVOT	2
1	11543	SEAKEEPER 2 CYLINDER BRACE, FINISHED MACHINED	1

ITEM NO.	PART NO.	DESCRIPTION	QTY.
<div><div><div>PROPRIETARY AND CONFIDENTIAL</div><div>THE INFORMATION CONTAINED IN THIS DRAWING IS THE SOLE PROPERTY OF SEAKEEPER INCORPORATED. ANY REPRODUCTION IN PART OR AS A WHOLE WITHOUT THE WRITTEN PERMISSION OF SEAKEEPER IS PROHIBITED.</div><div>THIS DRAWING SUPERSEDES ALL OTHER FILE FORMAT TYPES UNLESS OTHERWISE SPECIFIED DO NOT SCALE DRAWING</div></div><div><div>3rd ANGLE PROJECTION</div><div>WEIGHT - LBS : 41.854</div><div>MATERIAL: ---</div></div><div><div>SEAKEEPER</div><div>Seakeeper Inc. 45310 Abell House Lane, Suite 350 California, MD 20619</div><div>DESCRIPTION: SEAKEEPER 2 UPPER FOUNDATION ASSEMBLY, SERVICE REFERENCE</div></div><div><div>DRAWING NO: 12569-SP</div><div>REV NO: 3</div><div>SCALE: 1:8</div><div>SHEET NO: 1 OF 2</div></div></div>			

