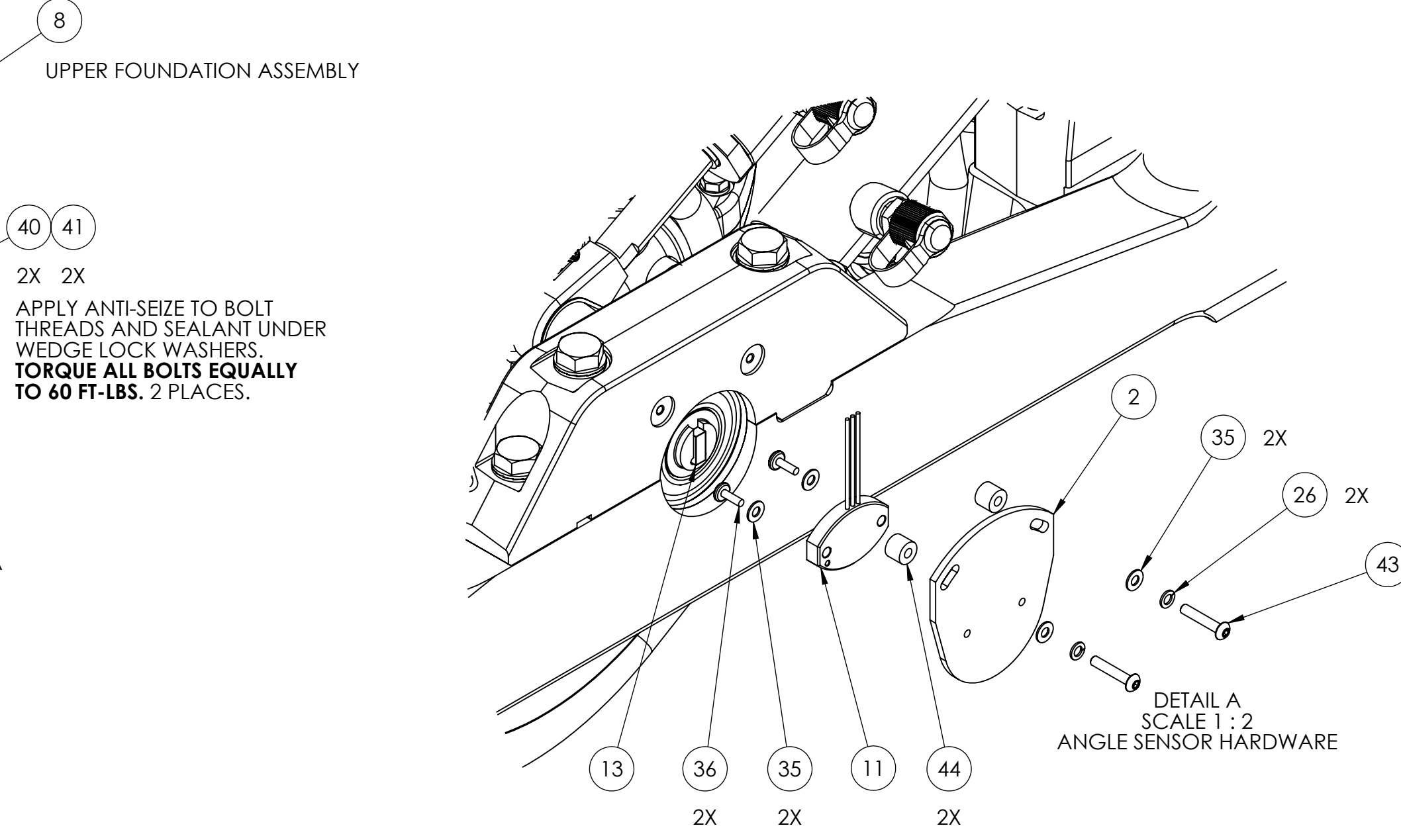
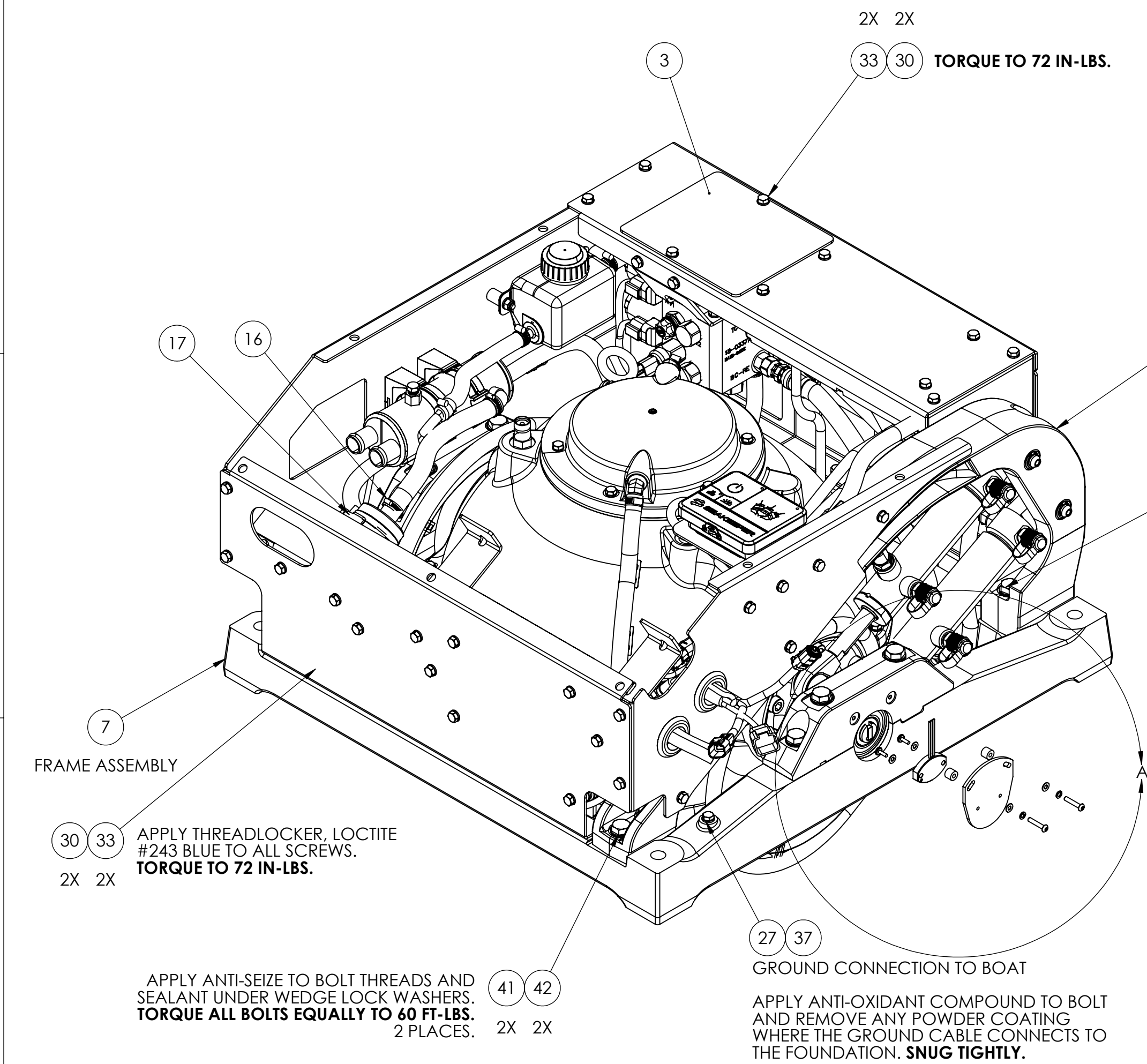
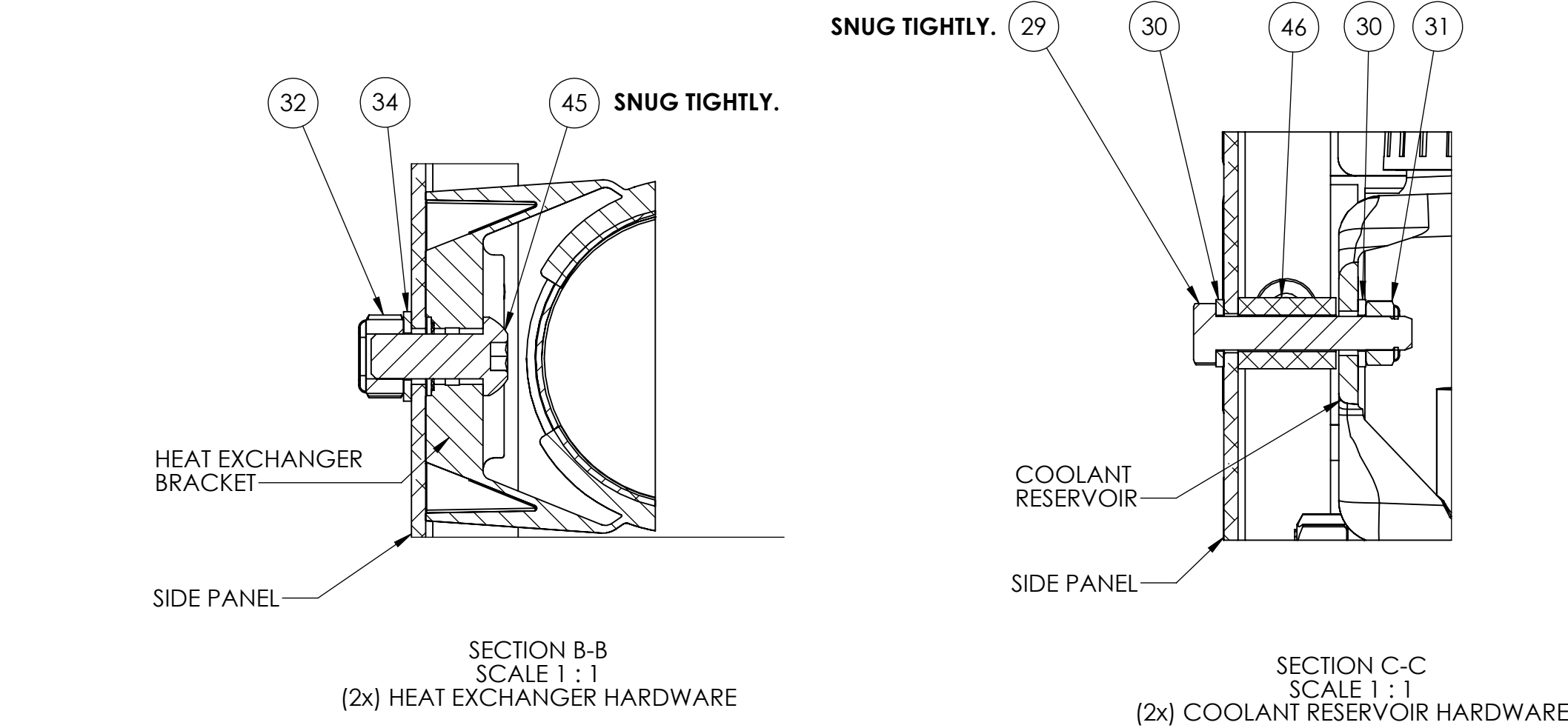
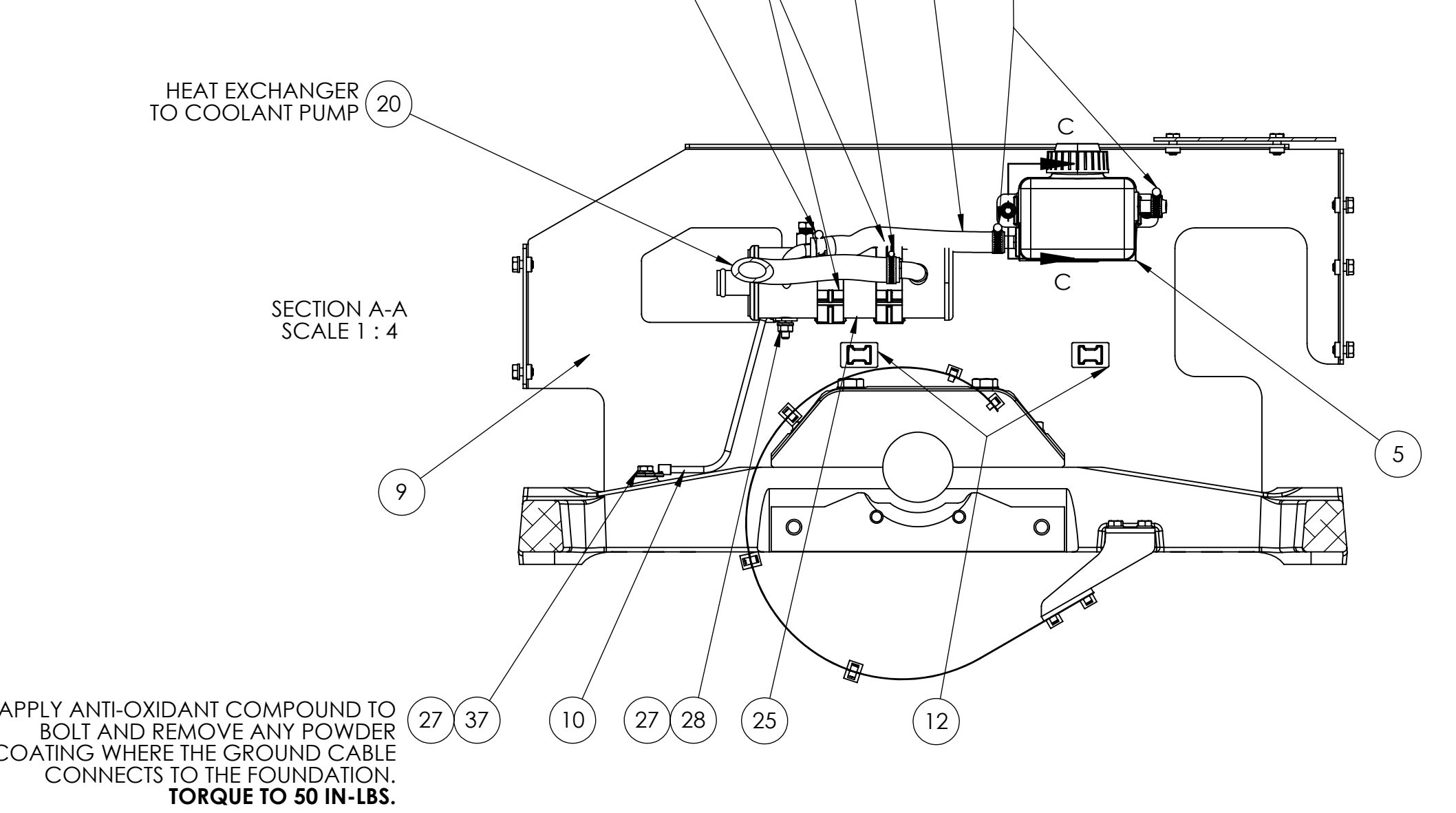
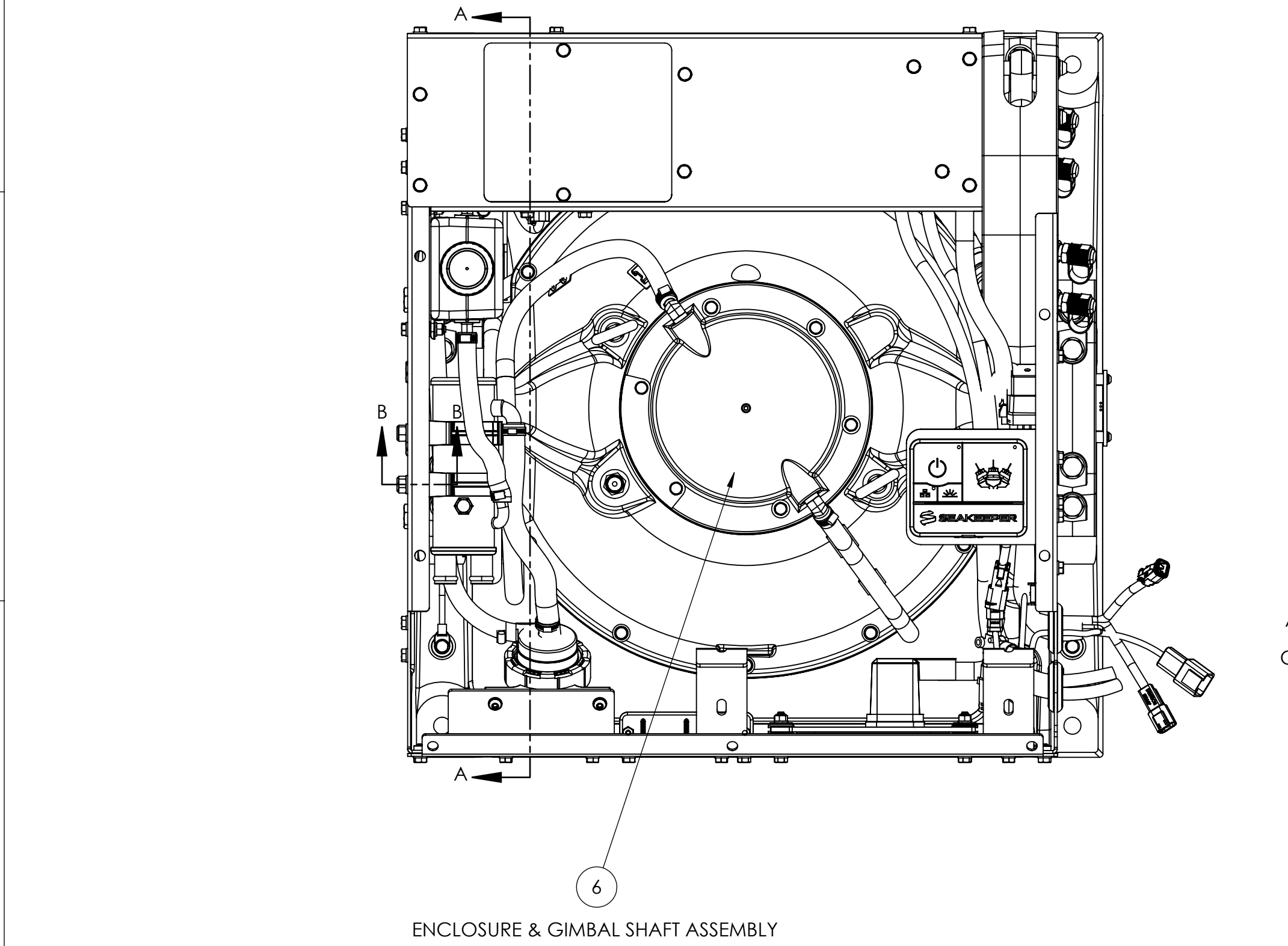


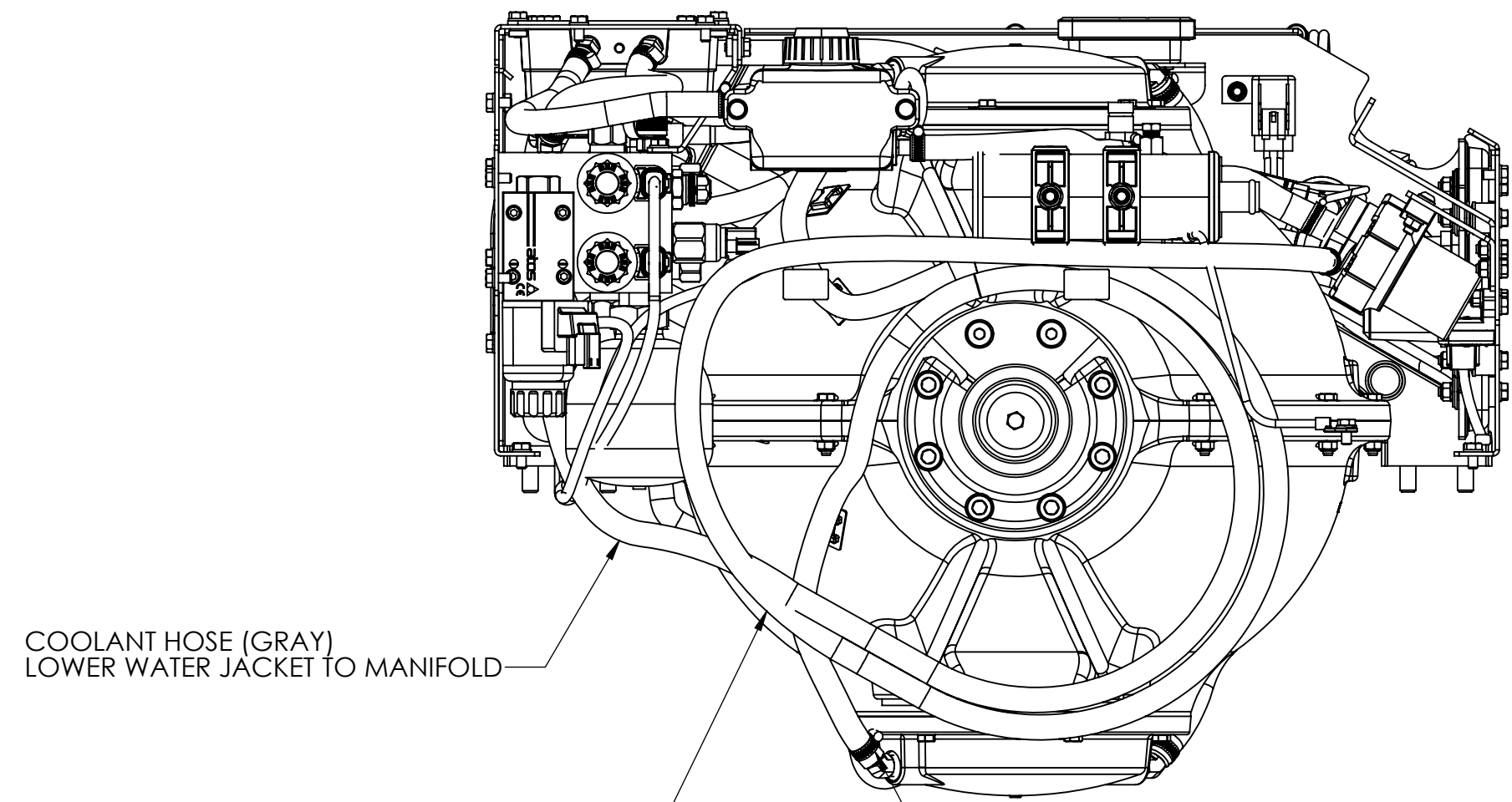
NOTES:
1. BE SURE THAT ALL HOSES ARE FREE OF DIRT AND DEBRIS AND ANY PORT PLUGS ARE REMOVED BEFORE MAKING HOSE CONNECTIONS.
2. APPLY THREADLOCKER ACCORDING TO SEAKEEPER WORK INSTRUCTION WI-085.
3. INSTALL BUSHINGS INTO ROD ENDS PRIOR TO PIN INSTALLATION. APPLY A THIN FILM OF BLACK MOLY GREASE TO OUTER AND INNER SURFACE OF BUSHINGS.
4. FOLLOW PWI-0038, CHANGES TO ELIMINATE VACUUM PRESSURE SENSOR 30288 AND MODIFIED WIRE HARNESS.



REV NO.	ECN NO.	ZONE	DESCRIPTION	DATE	DRAWN BY	APRVD. BY
1	906		INITIAL RELEASE	18JAN2022	TMD	EMS
2	906		REMOVED CONNECTBOX COMPONENTS AND ADDED 5" DISPLAY. RESERVOIR SPACER MATERIAL TO NYLON.	12JUL2022	RMF	TMD
3	1060	C3	GIMBAL CAP BOLTS CHANGED 60537 TO 60938 AND 60538 TO 60924.	05OCT2022	RMF	ZGY
4	1060	C3	GIMBAL CAP BOLT CHANGED 60924 TO 60968.	15FEB2023	RMF	ZGY
5	1059	2-C6	ADDED CONNECTBOX CABLES 30332 AND 30330. REMOVED 30298-5 INCH TOUCH DISPLAY	01MAR2023	RMF	TMD

52	70079	GREASE, MOLY/GRAPHITE NLGI GRADE 2	AR
51	70054	THREADLOCKER, LOCTITE #243, BLUE	AR
50	70029	CORROSION RESISTANT CONDUCTIVE PASTE	AR
49	70002	ANTI-SEIZE COMPOUND - NICKEL BASE	AR
48	60968	SCREW, HEX HD CAP M10-1.5 X 90MM LG, FULL TD, GRADE 10.9 ZN-NI PLTD STL	4
47	60938	SCREW, HEX HD CAP M10-1.5 X 45MM, GRADE 10.9 ZN-NI PLTD STL	4
46	60927	SPACER, UNTHREADED, 1/2" OD X .257" ID X 11/16" LONG, OFF-WHITE NYLON	2
45	60580	SCREW, SKT HD BTN, M8-1.25 X 20 MM LG, 18-8 SS	2
44	60553	STANDOFF, ROUND, M4 X 10MM OD, 8MM LG, 18-8SS	2
43	60551	SCREW, PHILLIPS HD PAN, M4-.7 X 22MM LG FULL TD, 18-8 SS	2
42	60548	SCREW, HEX HD CAP, M10X1.5 X 40MM LG, GRD 10.9, ALUM ZNC PLTD STL	2
41	60531	WASHER, WEDGE LOCK, M10, .45 ID X .83 OD	12
40	60530	SCREW, HEX HD CAP, M10X1.5 X 60MM LG	2
39	60466	RETAINING RING, INTERNAL .62 BORE	2
38	60465	SHIM WASHER, .62 OD X .38 ID X .025 THK	2
37	60352	SCREW, HEX HD CAP M6-1.0 X 12MM FULL TD	2
36	60344	SCREW, PHILLIPS HD PAN M4-.7 X 10MM FULL TD	2
35	60343	WASHER, FLAT DIN125 M4	4
34	60330	WASHER, FLAT DIN125 M8	2
33	60294	SCREW, HEX HD CAP M6-1.0 X 12MM LG	18
32	60267	HEX NUT, NYLOK M8-1.2 SS	2
31	60255	HEX NUT, NYLOK M6-1.0	2
30	60223	WASHER, FLAT, M6 12MM OD	22
29	60222	SCREW, HEX HD CAP M6-1.0 X 35MM 316SS	2
28	60098	NUT, FULL HEX, DIN 934, M6-1.0	1
27	60096	WASHER, SPLIT LOC .25 ID	3
26	60037	SPRING LOCK WASHER, M4	2
25	40705	SEAKEEPER 2/3 HEAT EXCHANGER W/O THERMOSTAT	1
24	40665	HANGER, ADJUSTABLE PUSH-CLOSE CLAMPING, 2.0 TO 2.1875	2
23	40479	ROD END BUSHING, .625 OD X .500 ID X .625 LONG, BUNTING	2
22	40411	BRAKE PIN COVER	2
21	40250	SILI-THANE 803 MARINE SEALANT	AR
20	40223	COOLANT HOSE, .5" ID X 8" LONG	1
19	40109	COOLANT HOSE, 3/8" ID X 6.25" LONG	1
18	40109	COOLANT HOSE, 3/8" ID X 70" LONG	1
17	40047	HOSE CLAMP SIZE -04, .31 BAND WIDTH, 301SS	6
16	40026	HOSE CLAMP, SIZE 06, 7/16"-25/32" CLAMP ID, 5/16" BAND WIDTH	2
15	30332	CABLE, MALE/FEMALE, NMEA 2000 PLASTIC MICRO, 6M LG.	1
14	30330	CABLE, ETHERNET EXTENSION, 22 AWG, MMFF, M12 SCREW	1
13	30248	POSITION MARKER (MAGNET ONLY)	1
12	30016	LARGE CLICK BOND WIRE TIE ANCHOR	2
11	20330	SEAKEEPER GIMBAL ANGLE SENSOR	1
10	20228	GROUND CABLE, 10AWG, 13"	1
9	12575	SEAKEEPER 2 RIGHT SIDE PANEL, CONNECTBOX	1
8	12569	SEAKEEPER 2 UPPER FOUNDATION ASSEMBLY (AM BOM)	1
7	12568	SEAKEEPER 2 FRAME ASSEMBLY (AM BOM)	1
6	12567	SEAKEEPER 2 ENCLOSURE AND GIMBAL SHAFT ASSEMBLY	1
5	12399	SEAKEEPER 2/3 COOLANT RESERVOIR	1
4	12117	SEAKEEPER 2 ROD END THRUST SHIM	2
3	11838	SEAKEEPER 2 MANIFOLD COVER PANEL	1
2	11621	SMALL MODEL SEAKEEPER, ANGLE SENSOR MOUNT PLATE	1
1	11547	SEAKEEPER 2 BRAKE CYLINDER ROD CLEVIS PIN	2

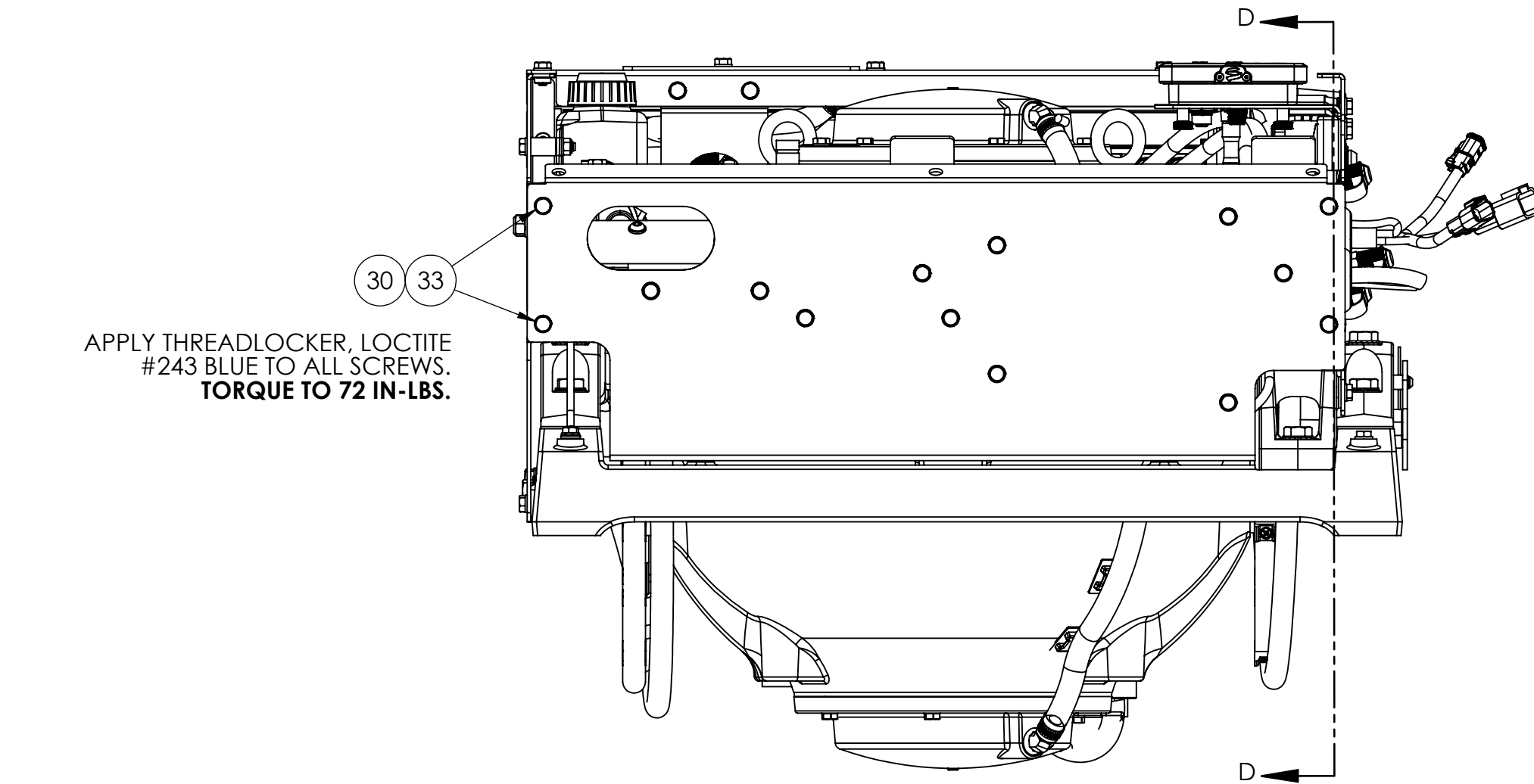
ITEM NO.	PART NO.	DESCRIPTION	QTY.
<div><div><p>PROPRIETARY AND CONFIDENTIAL</p><p>THE INFORMATION CONTAINED IN THIS DRAWING IS THE SOLE PROPERTY OF SEAKEEPER INCORPORATED. ANY REPRODUCTION IN PART OR AS A WHOLE WITHOUT THE WRITTEN PERMISSION OF SEAKEEPER IS PROHIBITED.</p><p>THIS DRAWING SUPERSEDES ALL OTHER FILE FORMAT TYPES UNLESS OTHERWISE SPECIFIED DO NOT SCALE DRAWING</p></div><div><p>3rd ANGLE PROJECTION</p><p>WEIGHT - LBS : 376.00</p><p>MATERIAL: ---</p></div><div><p>SEAKEEPER</p><p>Seakeeper Inc. 45310 Abell House Lane, Suite 350 California, MD 20619</p><p>DESCRIPTION: SEAKEEPER 2 TOP LEVEL ASSEMBLY, SERVICE REFERENCE</p><p>DRAWING NO: 12570-SP</p><p>REV NO: 5</p><p>SCALE: 1:8</p><p>SHEET NO: 1 OF 2</p></div></div>			



COOLANT HOSE (GRAY)
LOWER WATER JACKET TO MANIFOLD

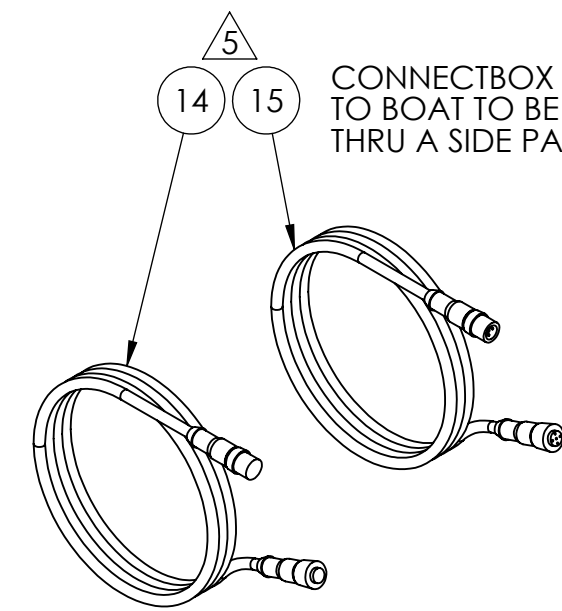
COOLANT HOSE (BLACK)
COOLANT PUMP TO UPPER WATER JACKET

SIDE PANEL AND FRAME HIDDEN
SCALE 1 : 4
COOLANT HOSE ROUTING

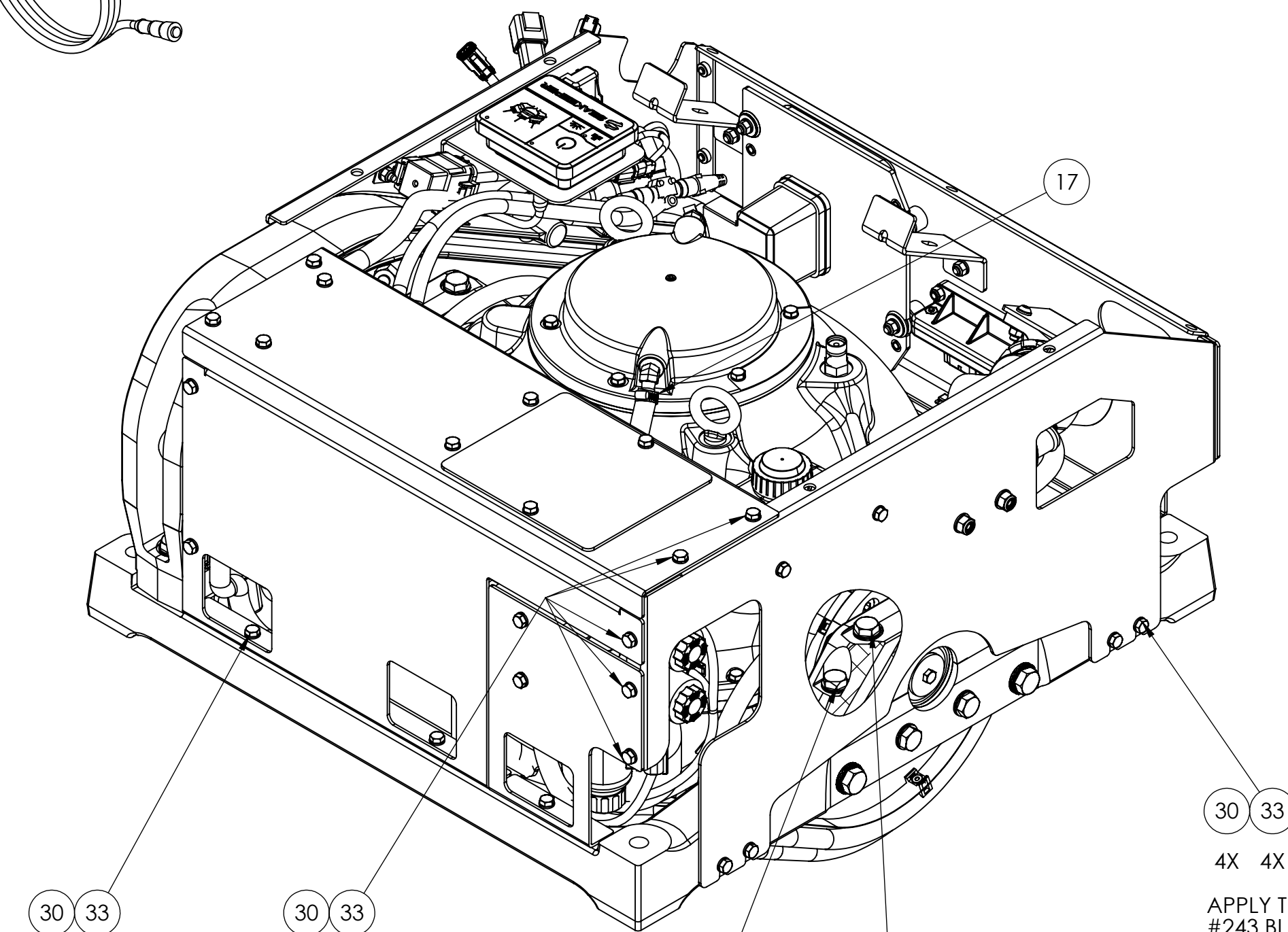


APPLY THREADLOCKER, LOCTITE
#243 BLUE TO ALL SCREWS.
TORQUE TO 72 IN-LBS.

FRONT SIDE



CONNECTBOX CABLES
TO BOAT TO BE ROUTED
THRU A SIDE PANEL GROMMET.



3X 3X
APPLY THREADLOCKER, LOCTITE
#243 BLUE TO ALL SCREWS.
TORQUE TO 72 IN-LBS.

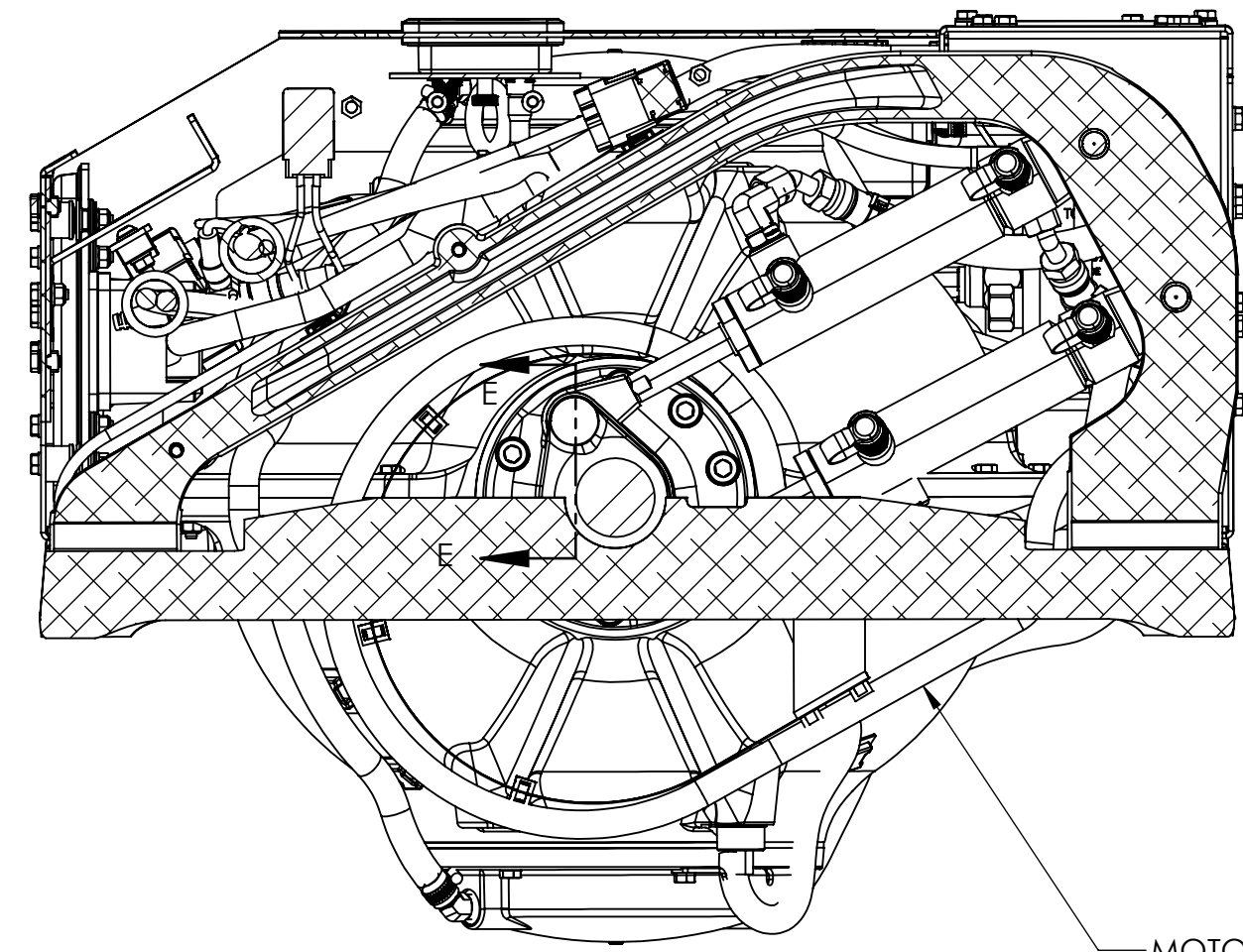
4X 4X

APPLY ANTI-SEIZE TO BOLT THREADS AND
SEALANT UNDER WEDGE LOCK WASHERS.
TORQUE ALL BOLTS EQUALLY TO 60 FT-LBS.
8 PLACES.

4X 4X

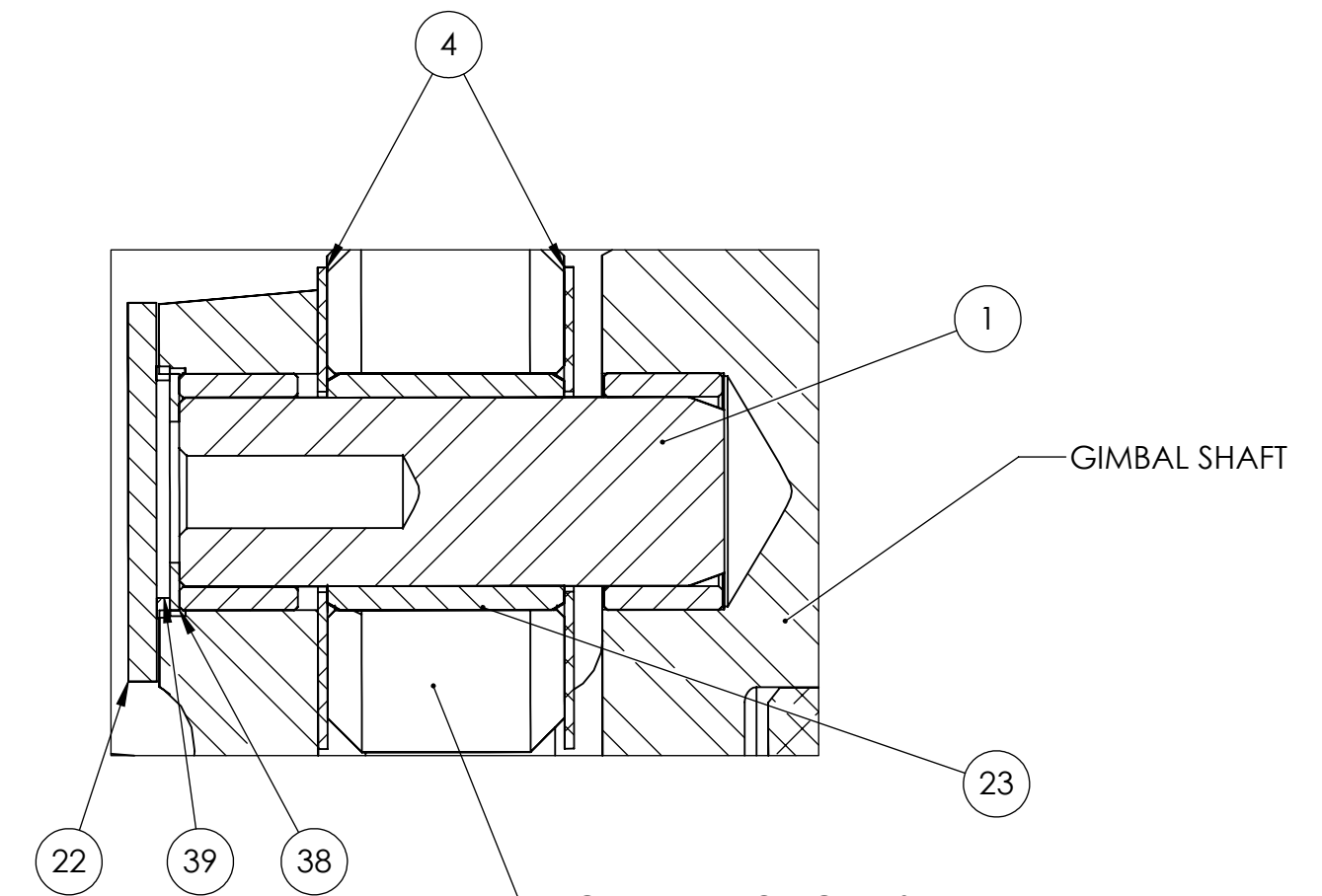
4X 4X

APPLY THREADLOCKER, LOCTITE
#243 BLUE TO ALL SCREWS.
TORQUE TO 72 IN-LBS.



MOTOR POWER CABLE FROM
ENCLOSURE TO DRIVE

SECTION D-D
SCALE 1 : 4
MOTOR POWER CABLE ROUTING



GIMBAL SHAFT

CYLINDER ROD CLEVIS

2X
SECTION E-E
SCALE 2 : 1
ROD END TO GIMBAL SHAFT BRAKE PIN
SEE NOTE #3.

PROPRIETARY AND CONFIDENTIAL
THE INFORMATION CONTAINED IN
THIS DRAWING IS THE SOLE PROPERTY
OF SEAKEEPER INCORPORATED. ANY
REPRODUCTION IN PART OR AS A
WHOLE WITHOUT THE WRITTEN
PERMISSION OF SEAKEEPER IS
PROHIBITED.
THIS DRAWING SUPERSEDES
ALL OTHER FILE FORMAT TYPES
UNLESS OTHERWISE SPECIFIED
DO NOT SCALE DRAWING

3rd ANGLE PROJECTION
WEIGHT - LBS :
376.00
MATERIAL:

SEAKEEPER
Seakeeper Inc. 45310 Abell House Lane, Suite 350 California, MD 20619
DESCRIPTION:
SEAKEEPER 2 TOP LEVEL
ASSEMBLY, SERVICE REFERENCE
DRAWING NO: 12570-SP 5
REV NO: 5
SCALE: 1:8
SHEET NO: 2 OF 2