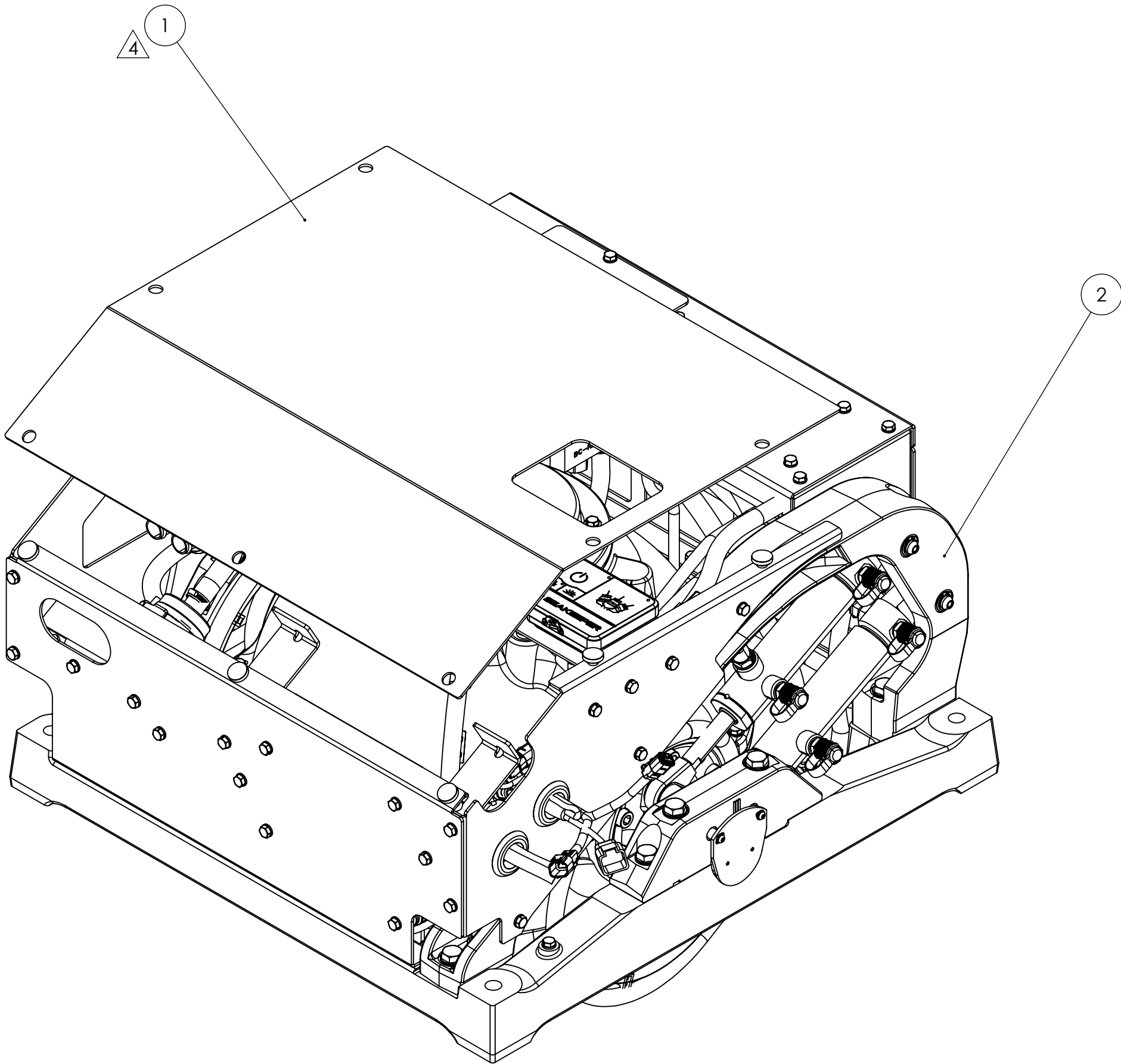
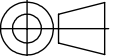



ATTENTION: BEFORE REMOVING GYRO, USE 90491, SEAKEEPER 2 DETAILED PACKING LIST , AS A CHECKLIST TO ENSURE ALL NECESSARY ITEMS ARE PRESENT WITHIN THE SHIPPING CRATE (SOME ITEMS COULD BE PACKAGED UNDERNEATH THE GYRO).

REV NO.	ECN NO.	ZONE	DESCRIPTION	DATE	DRAWN	APPRVD.
1	---	---	RELEASED FOR PRODUCTION	10JAN2018	---	WHK
2	0906	---	REFORMATTED	10AUG2021	---	TMD
3	0906		REMOVED CONNECTBOX COMPONENTS. ADDED NEW TOP PANEL.	11JUL2022	RMF	TMD
4	1059	E6	CHANGED TOP PANEL FROM 12556 TO 12931.	01MAR2023	RMF	TMD



2	12570	SEAKEEPER 2 CRATED GYRO	1
1	12556	SEAKEEPER 2 TOP COVER PANEL, CONNECTBOX	1
ITEM NO.	PART NUMBER	DESCRIPTION	QTY.
<p>PROPRIETARY AND CONFIDENTIAL THE INFORMATION CONTAINED IN THIS DRAWING IS THE SOLE PROPERTY OF SEAKEEPER INCORPORATED. ANY REPRODUCTION IN PART OR AS A WHOLE WITHOUT THE WRITTEN PERMISSION OF SEAKEEPER IS PROHIBITED.</p> <p>THIS DRAWING SUPERSEDES ALL OTHER FILE FORMAT TYPES UNLESS OTHERWISE SPECIFIED DO NOT SCALE DRAWING</p>		3rd ANGLE PROJECTION  WEIGHT - LBS : --- MATERIAL: ---	 <small>Seakeeper Inc., 45310 Abell House Lane, Suite 350 California, MD 20619</small> DESCRIPTION: SEAKEEPER 2 HARDWARE SCOPE OF SUPPLY
DRAWING NO: 90469		REV NO: 4	SCALE: SHEET NO: 1:8 1 OF 1