

SEAKEEPER 2 BOLT-IN CLEARANCES



PRODUCT SEAKEEPER 2

1. SEAKEEPER 2 CLEARANCE DIMENSIONS

The operating and service clearances of the Seakeeper 2 are shown in the following figure. The Seakeeper 2 installation must allow for the removal of the cover for maintenance and service via top-down access or by providing access adjacent to the unit with the minimum overhead clearance specified. The Seakeeper 2 cannot be serviced if the cover cannot be removed.

REMINDER: Refer to the Seakeeper 2 Bolt-In Installation Details (90487) for additional information.

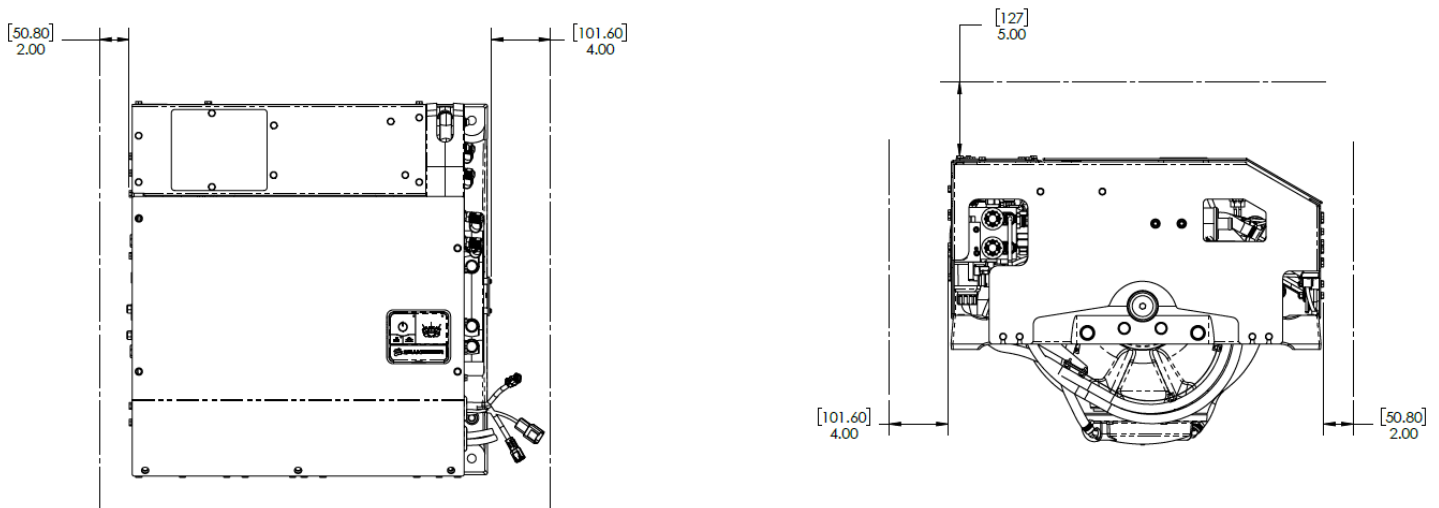


Figure 1: Seakeeper 2 Bolt-In Clearance Dimensions

Tight clearances from cable guide bands to hull structure. See below figure for dimensions and reference Seakeeper 2 Bolt-In Installation Guide for complete envelope.

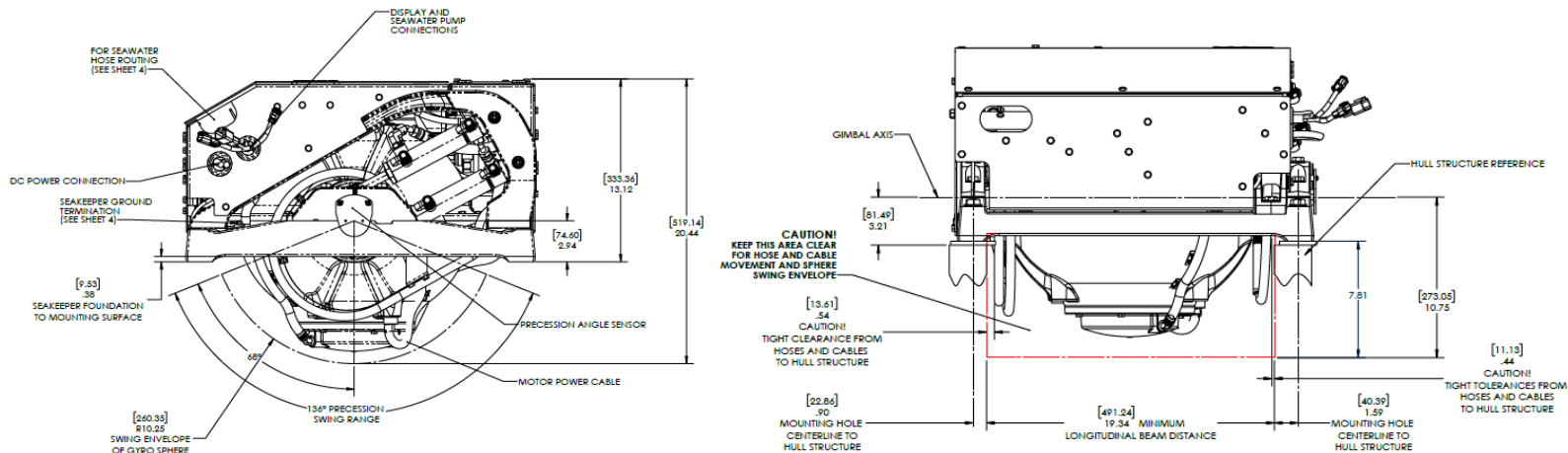


Figure 2: Seakeeper 2 Clearance Dimensions for Moving Hoses and Cables

SEAKEEPER 2 BOLT-IN CLEARANCES



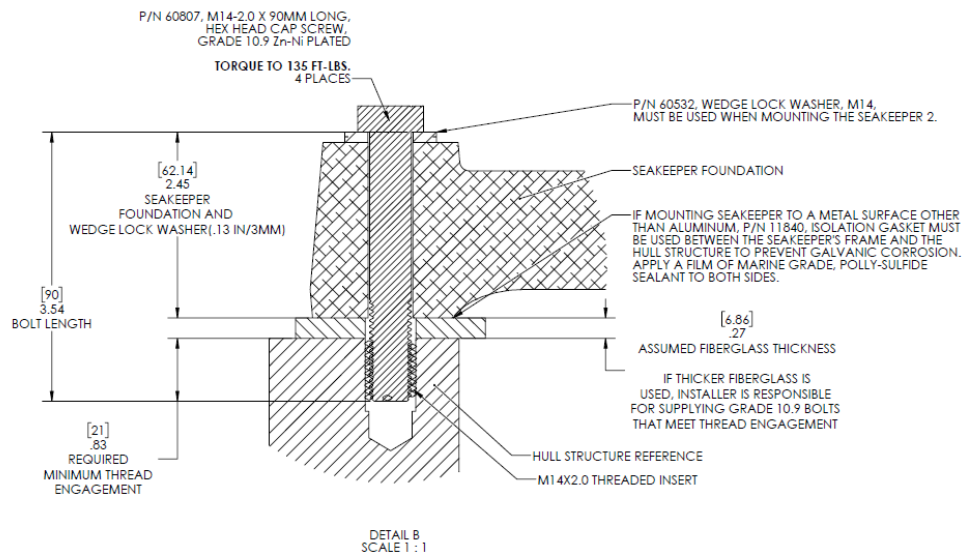
PRODUCT SEAKEEPER 2

2. SEAKEEPER 18 MOUNTING DETAILS

The Seakeeper 2 is provided with a Blind-Hole Kit (P/N 90474) for blind-hole installations. A Thru-Bolt Kit (P/N 90636) is available as an option. One of the Seakeeper fastener kits is required for the installation of the Seakeeper 2. If the appropriate thread engagement cannot be achieved with the available kits comparable M14 x 2.0 Grade 10.9 bolts should be sourced in the appropriate length.

2.1 BLIND-HOLE KIT

The Seakeeper 2 Blind-Hole Kit (P/N 90474) is provided in the scope of supply for Seakeeper 2 installations. The Blind-Hole Kit components are shown in the following figure:



2.2 THRU-BOLT KIT

The Seakeeper 2 Thru-Bolt Kit (P/N 90636) is offered as an option for Seakeeper 2 installations. The Thru-Bolt Kit components are shown in the following figure:

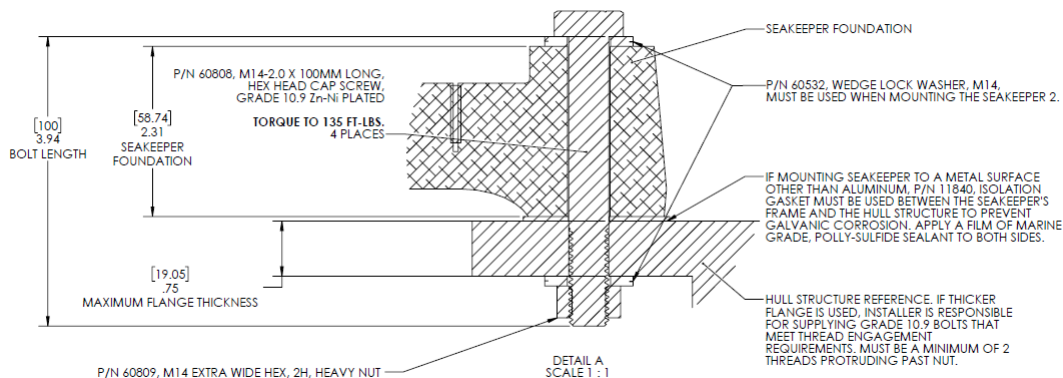


Figure 3: Seakeeper 2 Bolt-In Installation Details (PN 90487)

WARNING:

- New bolts must be used for each installation and re-installation. **Bolts cannot be reused.**
- Seakeeper 2 Foundation Bolts must be torqued to specification: 135 ft-lbs (183 N-m).
- Threaded inserts are **required** for aluminum (or similar) tapping plates.

REMINDER: Refer to the Seakeeper Installation Manual (90488) for detailed installation instructions.