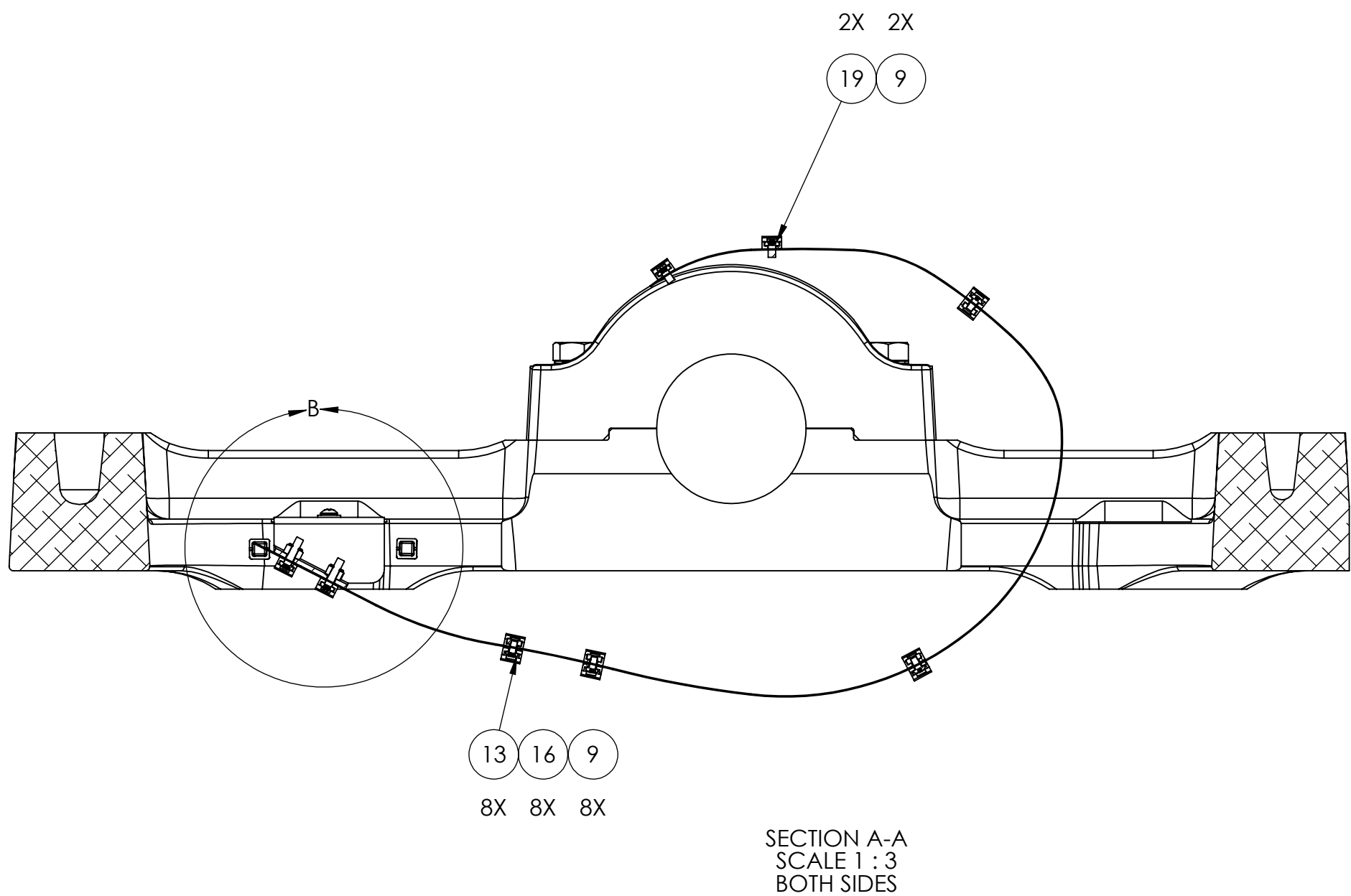
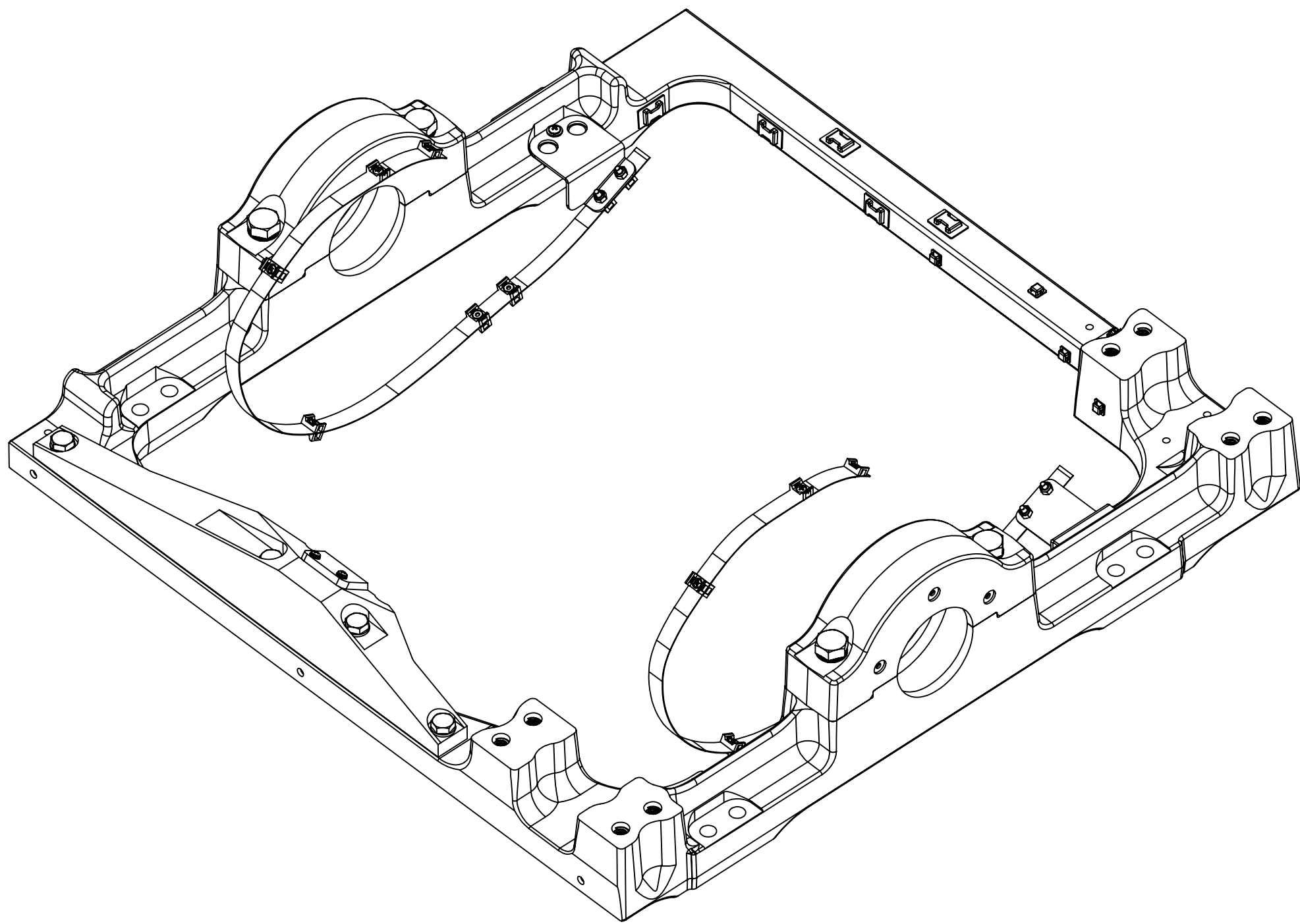
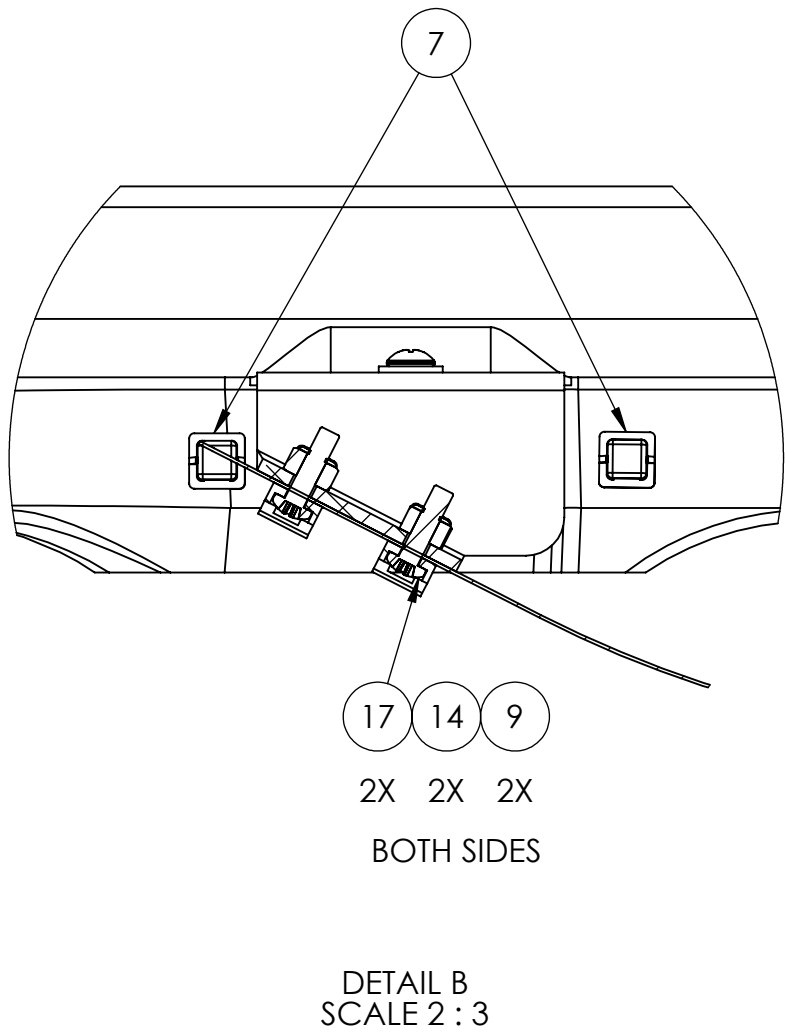


1. CLEAN ALL MATING SURFACES AND TAPPED HOLES FROM ANY OIL OR DEBRIS USING DENATURED ALCOHOL.
2. APPLY THREADLOCKER ACCORDING TO SEAKEEPER WORK INSTRUCTION WI-085.



24	70054	THREADLOCKER, LOCTITE #243, BLUE	---	AR
23	70031	THREADLOCKER, LOCTITE #277, RED	---	AR
22	60511	SCREW, PHILLIPS HD PAN M4-.7 X 14MM FULL TD 18-8 SS	18-8 SS	4
21	60510	SCREW, HEX HD CAP M10-1.5X70MM PART TD 18-8 SS	18-8 SS	2
20	60509	SCREW, HEX HD CAP M10-1.5X30MM FULL TD 18-8 SS	18-8 SS	2
19	60483	SCREW, PHILLIPS HD PAN 8-32 X .25 LG	18-8SS	4
18	60421	WASHER, FLAT, M10 DIN125	316SS	4
17	60177	SCREW, PHILLIPS HD PAN 8-32 X 0.63	18-8 SS	4
16	60164	NUT, FULL HEX 6-32 18-8 SS	18-8 SS	8
13	60163	SCREW, PHILLIPS HD PAN 6-32 X 0.25	18-8 SS	8
14	60161	NUT, NYLOCK HEX 8-32	18-8 SS	4
13	60062	SCREW, PHILLIPS HD PAN 10-32 X 3/8 FULL TD 18-8 SS	18-8 SS	2
12	60038	FLAT WASHER, M4	18-8 SS	4
11	60033	FLAT WASHER #10	316SS	2
10	40250	SILI-THANE 803 MARINE SEALANT	POLYURETHANE	AR
9	40208	CABLE TIE MOUNT, PLASTIC, #8 SCREW	PLASTIC	24
8	30016	LARGE CLICK BOND WIRE TIE ANCHOR	COMPOSITE	5
7	30015	SMALL CLICK BOND WIRE TIE ANCHOR	COMPOSITE	7
6	11831	SEAKEEPER 5-6 BUMP STOP PAD, MOLDED URETHANE	URETHANE, 85A	2
5	11750	SEAKEEPER 6 FORWARD BRACE BUMP STOP	6061-T6	1
4	11658	SEAKEEPER 6 GUIDE BAND BRACKET BRAKE SIDE	ALUM, 5052	1
3	11655	SEAKEEPER 6 MACHINED FRAME ASSEMBLY	A356-16	1
2	11645	SEAKEEPER 6 GUIDE BRAND BRACKET, NON BRAKE SIDE	ALUMINUM 5052	1
1	10922	SEAKEEPER 5 CABLE GUIDE BAND	SEE NOTE 1	2
ITEM NO.	PART NO.	DESCRIPTION	MATERIAL	QTY. NOTE

PROPRIETARY AND CONFIDENTIAL

THE INFORMATION CONTAINED IN THIS
DRAWING IS THE SOLE PROPERTY OF
SEAKEEPER INCORPORATED. ANY
REPRODUCTION IN PART OR AS A WHOLE
WITHOUT THE WRITTEN PERMISSION OF
SEAKEEPER IS PROHIBITED.

SEAKEEPER 5-6 FRAME ASSEMBLY,
SERVICE REFERENCE

DWG NUMBER

12612-SP

REV. NO.	SHEET NO.
2	1 OF 1