

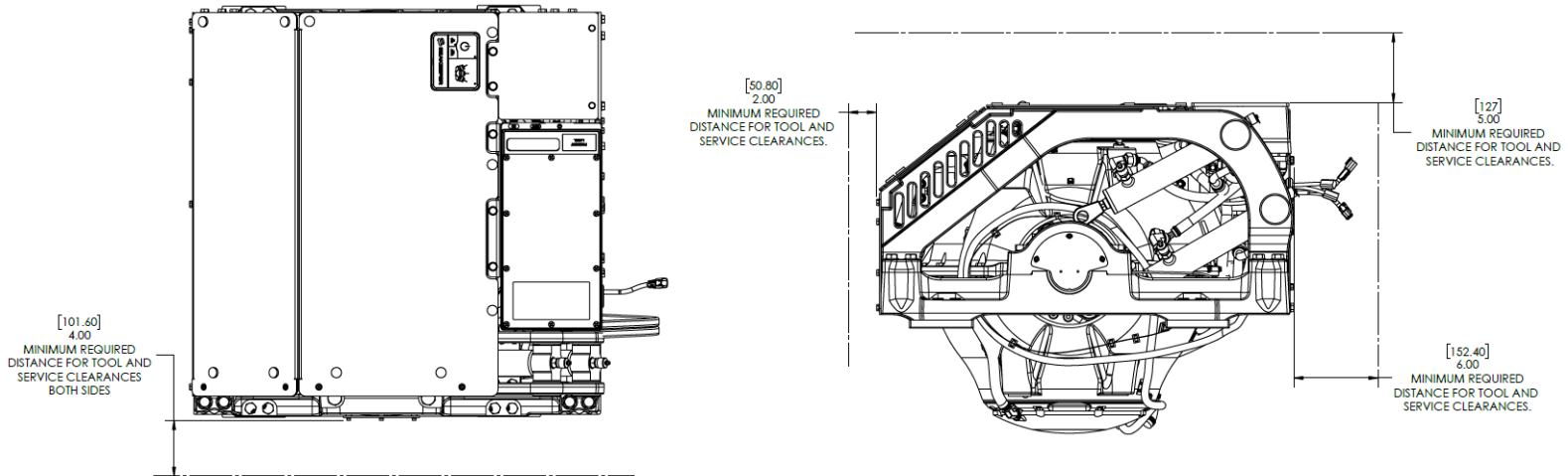
SEAKEEPER 5- 6 BOLT-IN CLEARANCES

PRODUCT SEAKEEPER 5-6

1. SEAKEEPER 5-6 CLEARANCE DIMENSIONS

The operating and service clearances of the Seakeeper 5-6 are shown in the following figure. The Seakeeper 5-6 installation must allow for the removal of the cover for maintenance and service via top-down access or by providing access adjacent to the unit with the minimum overhead clearance specified.

The Seakeeper 5-6 cannot be serviced if the cover cannot be removed.



REMINDER: Refer to the Seakeeper 5-6 Bolt-In Installation Details (90398) for additional information.

Figure 1: Seakeeper 5-6 Bolt-In Clearance Dimensions

Tight clearances from cable guide bands to hull structure. See below figure for dimensions and reference Seakeeper 5-6 Bolt-In Installation Guide for complete gyro envelope.

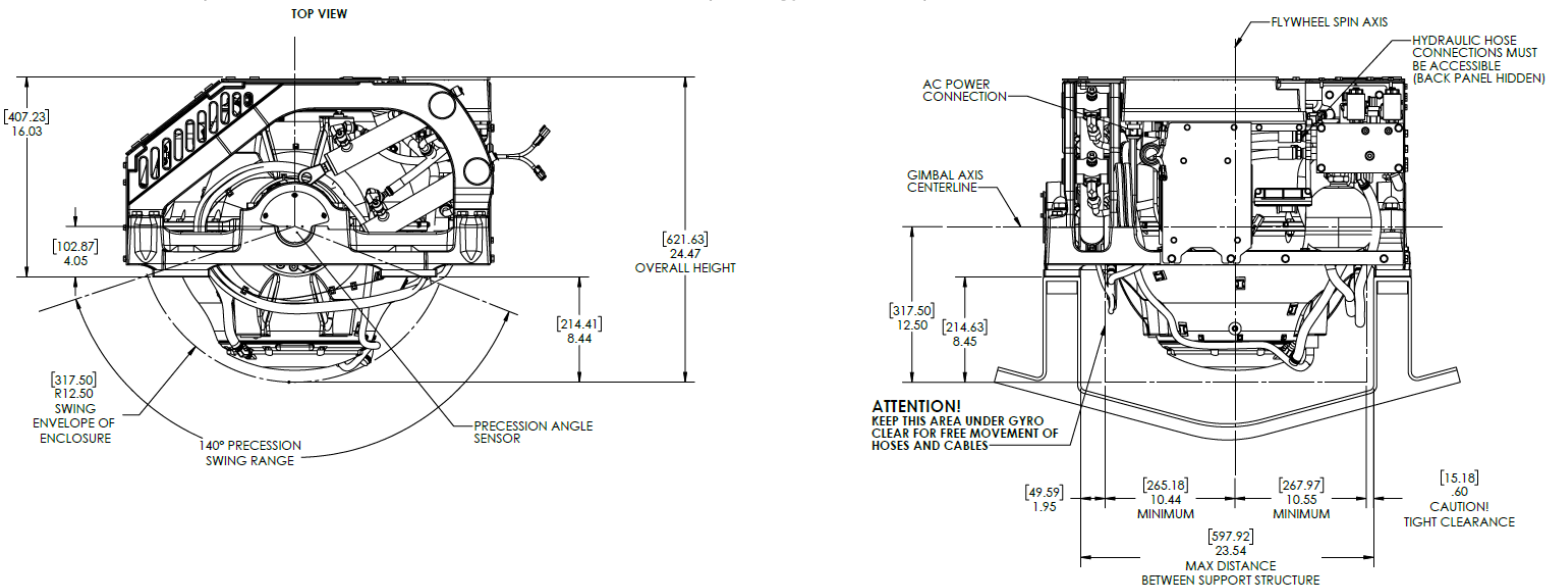


Figure 2: Seakeeper 5-6 Clearance Dimensions for Moving Hoses and Cables

SEAKEEPER 5- 6 BOLT-IN CLEARANCES



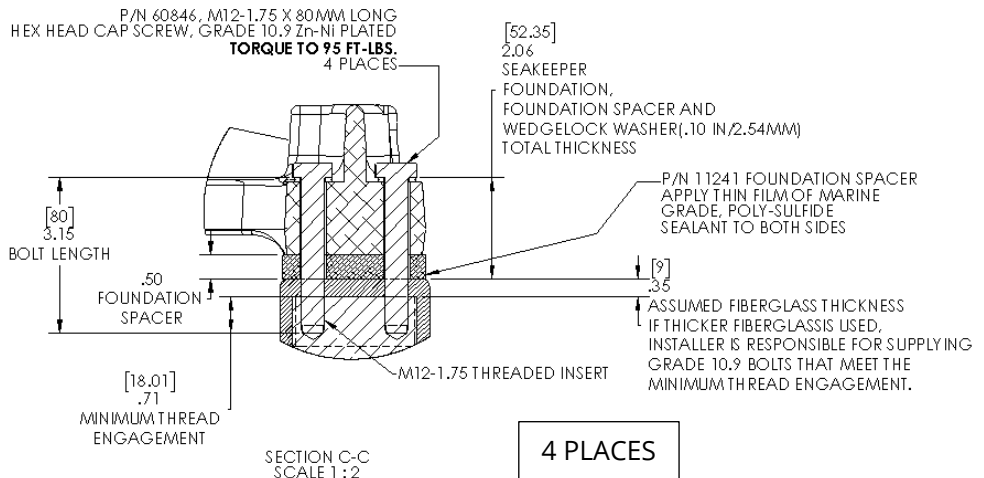
PRODUCT SEAKEEPER 5-6

2. SEAKEEPER 5-6 MOUNTING DETAILS

The Seakeeper 5-6 is provided with a Blind-Hole Kit for blind-hole installations. A Thru-Bolt Kit is available as an option. One of the Seakeeper fastener kits is required for the installation of the Seakeeper 5-6. If the appropriate thread engagement cannot be achieved with the available kits comparable M12 x 1.75 Grade 10.9 bolts should be sourced in the appropriate length.

2.1 BLIND-HOLE KIT (P/N 90400)

The Seakeeper 5-6 Blind-Hole Kit is provided in the scope of supply for Seakeeper 5-6 installations. The Blind-Hole Kit components are shown in the following figure:



2.2 THRU-BOLT KIT (P/N 90660)

The Seakeeper 5-6 Thru-Bolt Kit is offered as an option for Seakeeper 5-6 installations. The Thru-Bolt Kit components are shown in the following figure:

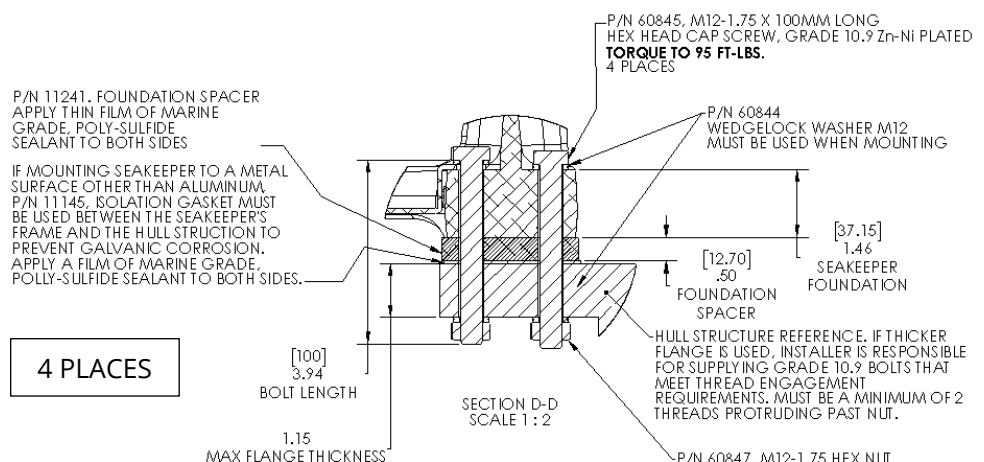


Figure 3: Seakeeper 5-6 Bolt-In Installation Guide

WARNING:

- New bolts must be used for each installation and re-installation. **Bolts cannot be reused.**
- Seakeeper 5-6 Foundation Bolts must be installed and torqued as specified in Figure 3.
- Threaded inserts are **required** for aluminum (or similar) tapping plates.

REMINDER: Refer to the Seakeeper Installation Manual (90402) for detailed installation instructions.