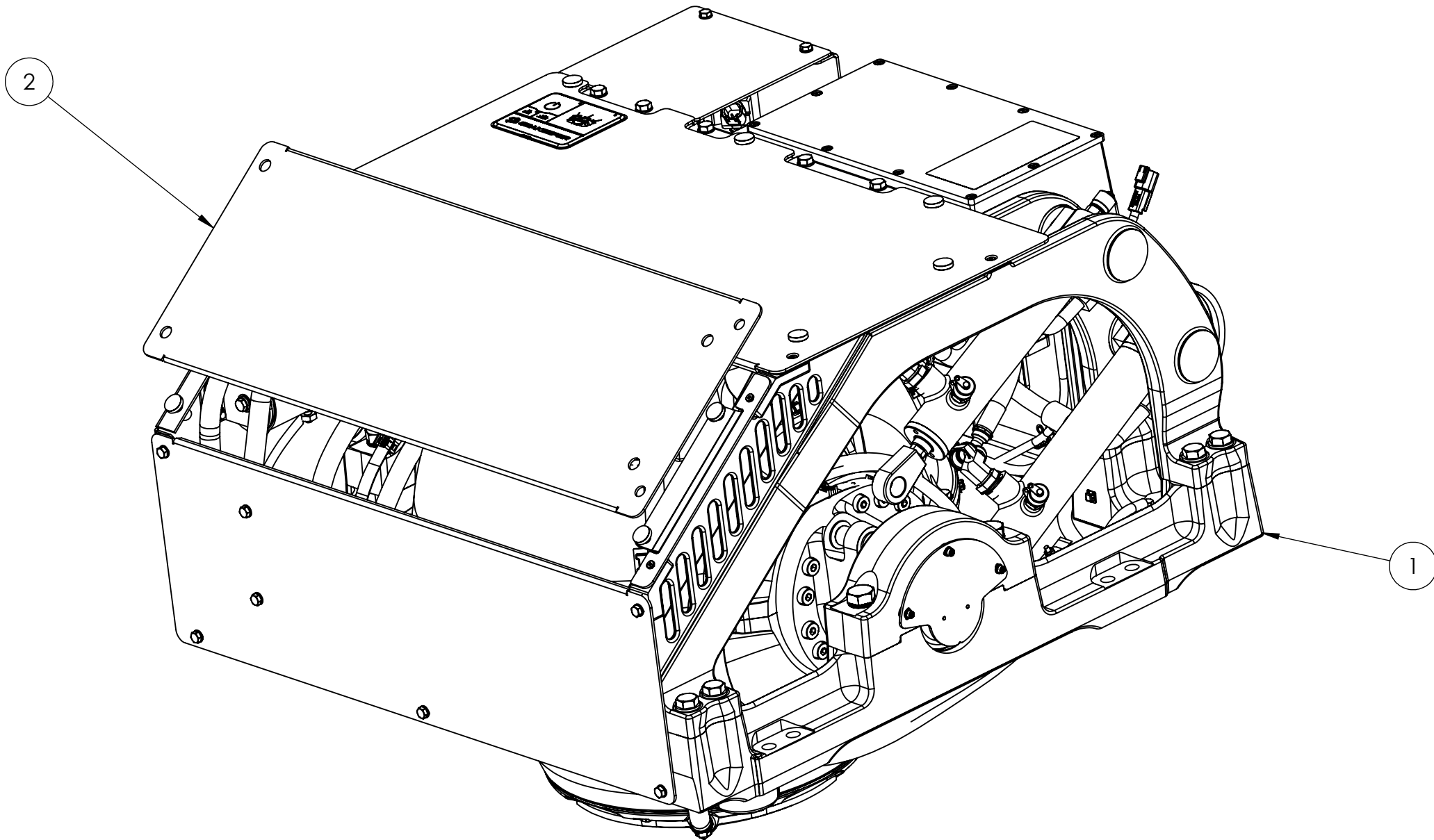




ATTENTION: BEFORE REMOVING GYRO, USE THIS DRAWING AS A CHECK LIST TO ENSURE ALL NECESSARY ITEMS ARE PRESENT WITHIN THE SHIPPING CRATE. (SOME ITEMS MAY BE PACKED UNDERNEATH THE GYRO)

| REV NO. | ECN NO. | ZONE | DESCRIPTION | DATE | DRAWN | APPRVD. |
|---------|---------|------|--------------------------------|------------|-------|---------|
| 1 | 0765 | | SK5 RELAUNCH | 6/20/2019 | --- | AVM |
| 2 | 908 | ALL | RE-DESIGNED ASSY | 11/10/2021 | ZGY | TMD |
| 3 | 908 | | REMOVED CONNECTBOX COMPONENTS. | 22AUG2022 | RMF | ZGY |
| 4 | 1059 | | ADDED CONNECTBOX. | 16JUN2023 | RMF | ZGY |



| | | | |
|--|----------|---|---|
| 2 | 12622 | SEAKEEPER 5 FACE PANEL | 1 |
| 1 | 12615 | SEAKEEPER 5/6 CRATED ASSEMBLY | 1 |
| ITEM NO. | PART NO. | DESCRIPTION | QTY. |
| PROPRIETARY AND CONFIDENTIAL THE INFORMATION CONTAINED IN THIS DRAWING IS THE SOLE PROPERTY OF SEAKEEPER INCORPORATED. ANY REPRODUCTION IN PART OR AS A WHOLE WITHOUT THE WRITTEN PERMISSION OF SEAKEEPER IS PROHIBITED. THIS DRAWING SUPERSEDES ALL OTHER FILE FORMAT TYPES UNLESS OTHERWISE SPECIFIED DO NOT SCALE DRAWING | | 3rd ANGLE PROJECTION  |  <small>Seakeeper Inc., 45310 Abell House Lane, Suite 350 California, MD 20619</small> DESCRIPTION: SEAKEEPER 5 HARDWARE SCOPE OF SUPPLY DRAWING NO: 90556 REV NO: 4 SCALE: 1:5 SHEET NO: 1 OF 1 |
| | | WEIGHT - LBS : --- | |
| | | MATERIAL: --- | |