

NAVICO AND SEAKEEPER COMPATIBILITY



PRODUCT ALL SEAKEEPER SERIES MODELS

DESCRIPTION

Seakeeper and NAVICO have teamed up to make your boating experience even better with Seakeeper compatibility on select LOWRANCE, SIMRAD, and B&G products. This document outlines how to connect Seakeeper units to compatible NAVICO MFDs using an ethernet connection and the applicable hardware and software requirements.

COMPATIBLE NAVICO AND SEAKEEPER HARDWARE

NAVICO Hardware:

- SIMRAD: NSO Evo2, NSO Evo3, NSO Evo3S MFD, NSO Evo3S MPU, NSS Evo3, GO7 XSE, GO9 XSE, GO12 XSE units, and NSX units
- Lowrance: Elite FS, HDS Carbon, and HDS Live series units
- B&G: Vulcan 7, Vulcan 9, Vulcan 12, Zeus3, Zeus3S, Zeus3 Glass Helm, Zeus3 Glass Helm MFD, and the Zeus3 Glass Helm MPU series units

Seakeeper Hardware: any Seakeeper model with a 5" Touch Display (P/N 30298) or Seakeeper ConnectBox (P/N 20415).

NOTE: A display upgrade kit is available for select Seakeeper models using older displays.

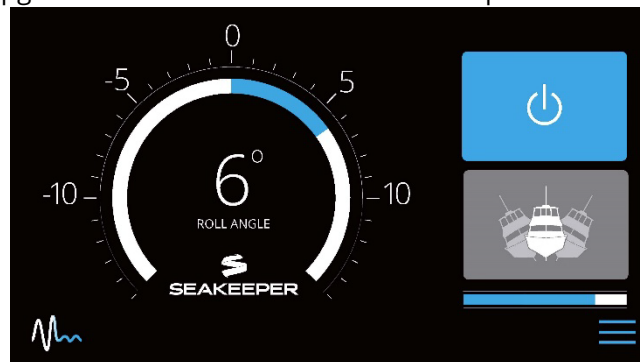


Figure 1: Seakeeper App Home Screen

NAVICO AND SEAKEEPER COMPATIBILITY



PRODUCT ALL SEAKEEPER SERIES MODELS

SOFTWARE REQUIREMENTS

The latest NAVICO MFD software is recommended and can be found at one of the following websites:

- SIMRAD software can be downloaded at: <http://downloads.simrad-yachting.com/>
- LOWRANCE software can be downloaded at: <https://downloads.lowrance.com/>
- B&G software can be downloaded at: <https://downloads.bandg.com/>

The most recent software release for the Seakeeper 5" Touch Display and ConnectBox is always recommended. Visit [Seakeeper Software page](#) or contact your local Seakeeper dealer for software update information. Visit <https://seakeeper.com/find-us/> for a complete listing of Seakeeper dealers. Seakeeper is not responsible for updating NAVICO software.

CONNECTING FROM SEAKEEPER 5" TOUCH DISPLAY

1. Connect the Seakeeper 5" Touch Display to the NAVICO MFD ethernet port using a 2 m (6.5 ft) long Seakeeper adapter cable (P/N 20346) available for purchase from Seakeeper dealer.
 - a. If a longer cable is required, Seakeeper offers a 10 m extension cable (P/N 30330), or a 25 m cable (P/N 30355), that connects between the 5" Touch Display and the NAVICO adapter cable.
2. The NAVICO adapter cable is routed from the Seakeeper 5" Touch Display 4-pin ethernet port (Figure 2) to the NAVICO MFD 5-pin ethernet port (Figure 3).



Figure 2: 5" Touch Display Ethernet Port



Figure 3: Connect Cable 20346 to "Network" Port

NAVICO AND SEAKEEPER COMPATIBILITY



PRODUCT ALL SEAKEEPER SERIES MODELS

- Once hardware is connected, cycle power to Seakeeper and then to MFD. Press the Settings button (gears icon) of the 5" Touch Display and select "SIMRAD" from the MFD dropdown menu, as seen in Figure 4.

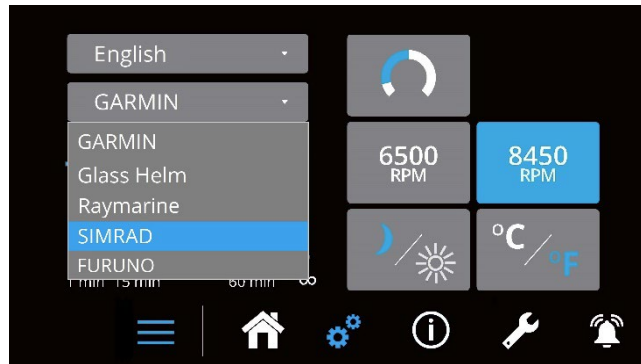


Figure 4: Seakeeper display settings screen showing MFD models in MFD dropdown menu

- Verify the Seakeeper app populates in the home page screen as shown in Figure 5.



Figure 5: NAVICO Home Page – with Seakeeper application icon

NAVICO AND SEAKEEPER COMPATIBILITY



PRODUCT ALL SEAKEEPER SERIES MODELS

CONNECTING FROM SEAKEEPER CONNECTBOX

1. Connect the Seakeeper ConnectBox 4-pin ethernet port (Figure 6) to the 5-pin NAVICO ethernet port (Figure 7) using 10 m extension cable (P/N 30330) and a 2 m long NAVICO ethernet adapter cable (P/N 20346).
 - a. If a longer cable is required, Seakeeper offers a 10 m extension cable (P/N 30330), or a 25 m cable (P/N 30355), that connects between the ConnectBox and the NAVICO ethernet adapter cable.

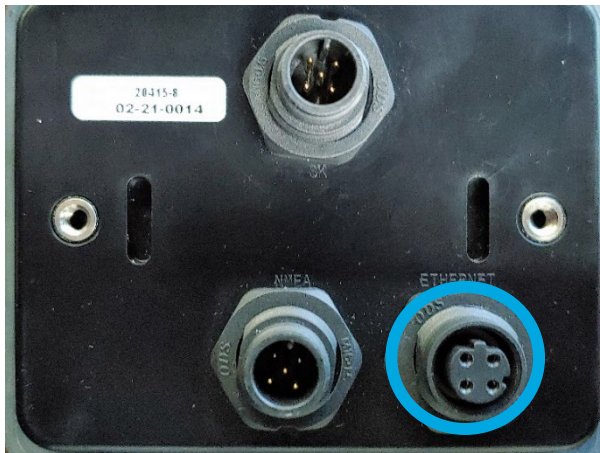


Figure 6: Seakeeper ConnectBox ethernet port



Figure 7: NAVICO ethernet port

2. Cycle power to the Seakeeper DC control power and then MFD.
3. Press and hold the ConnectBox ethernet button for 10 seconds or until spool bar LEDs strobe from left to right to indicate DHCP server ON (the ConnectBox will assign addresses).



PRESS ETHERNET BUTTON FOR 5-7 SECONDS



SPOOL BAR LEDs WILL STROBE FROM LEFT TO RIGHT. ROUND LEDs WILL FLASH

4. If mode fails to switch, then repeat Step 3.

NAVICO AND SEAKEEPER COMPATIBILITY



PRODUCT ALL SEAKEEPER SERIES MODELS

5. If spool bar LEDs strobe from right to left, then press ethernet button 10 seconds or until LEDs strobe from left to right to turn DHCP server ON.

NOTE: ConnectBox will return to normal operation automatically after short period.

6. Verify the Seakeeper app is populated in the Home Page screen as in Figure 8.



Figure 8: NAVICO Home Page – with Seakeeper application icon

NAVICO AND SEAKEEPER COMPATIBILITY



PRODUCT ALL SEAKEEPER SERIES MODELS

MULTI-SEAKEEPER SUPPORT

1. Verify each Seakeeper has a unique Seakeeper ID as follows:
 - a. On Seakeeper 5" Touch Display, hold the Settings button (gears icon) for five seconds.
 - i. Select the Seakeeper ID dropdown menu per Figure 9.

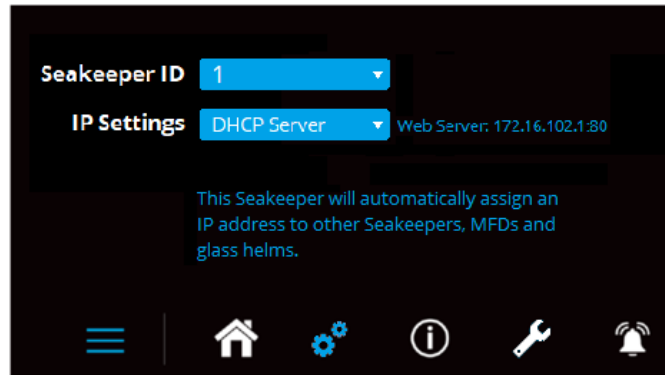


Figure 9: Seakeeper ID dropdown menu

- ii. Select desired Seakeeper ID number.
 - b. For models with a ConnectBox, regardless of being equipped with an optional 5" Touch Display, a Seakeeper dealer must program the ID numbers in each Seakeeper unit's ConnectBox.
 - i. Each ConnectBox requires to be placed in DHCP server ON mode per steps of previous section.
 - ii. Seakeeper assigned ID number 1 must be powered to use any other Seakeeper through MFD.
2. Connect two or more Seakeepers to the MFD using the NAVICO NEP-2 Network Expansion Port: SKU 000-10029-001.

NAVICO AND SEAKEEPER COMPATIBILITY



PRODUCT ALL SEAKEEPER SERIES MODELS

- 3. Multiple Seakeeper display screens can be seen in Figure 10. All connected Seakeepers can be operated from the NAVICO home screen. Toggle arrows atop the screen allow navigation between Seakeeper screens.

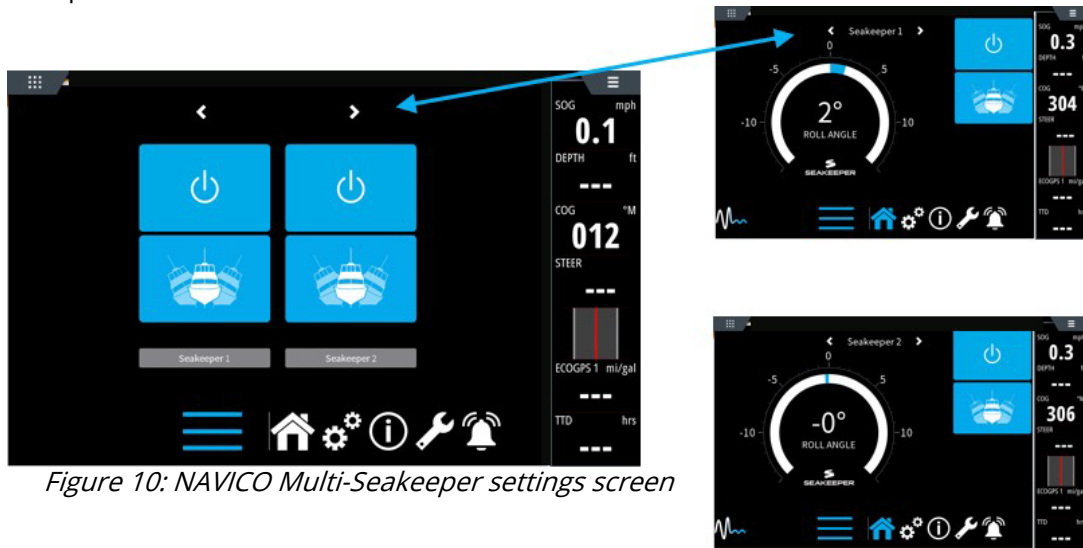


Figure 10: NAVICO Multi-Seakeeper settings screen

NAVICO AND SEAKEEPER COMPATIBILITY



PRODUCT ALL SEAKEEPER SERIES MODELS

TROUBLESHOOTING

1. If Seakeeper app does not appear on NAVICO MFD screen after connection, then perform following:
 - a. Check physical cable connections at the backs of the Seakeeper displays, NAVICO MFD, and extension hubs.
 - b. Update both MFD and Seakeeper display/ConnectBox software to latest revision.
 - c. Cycle power first to Seakeeper DC control power and then to MFD.
 - d. If ConnectBox is routed through an ethernet expansion device (or any device acting as a DHCP server), it will be necessary to change settings of the device for the ConnectBox to integrate.

- 1 For Simrad MFDs, it has been found that if the Seakeeper app appears on the screen but reads "Web Server," the MFD must be updated with most recent software updates from NAVICO.

- 2 For additional support, contact Seakeeper Product Support Team at support@seakeeper.com.

