

NOTES:

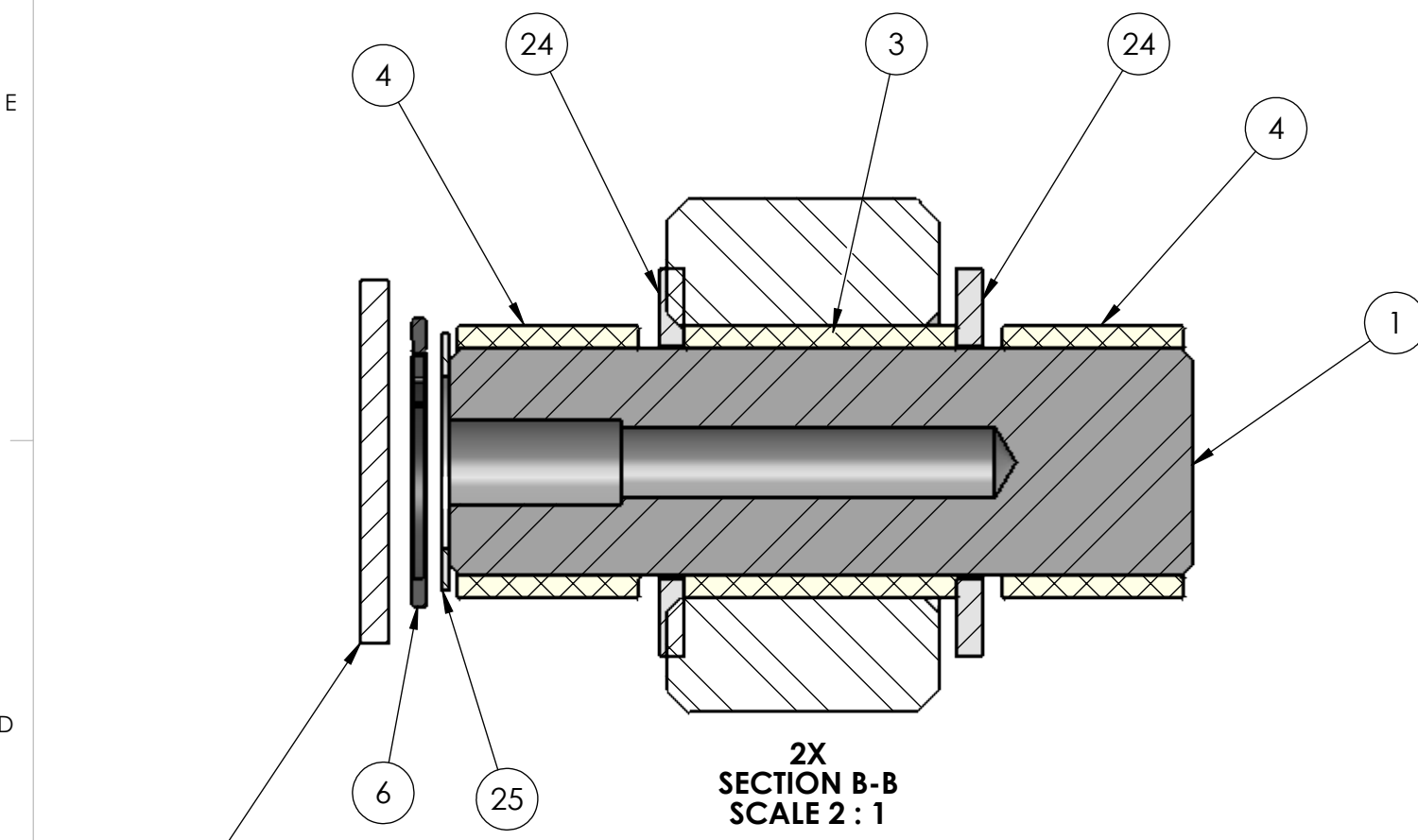
1) THIS DWG. REPRESENTS A SUB-GROUP OF COMPONENTS WITHIN THE SK6 BRAKE SYSTEM BILL OF MATERIAL AND DOES NOT NECESSARILY REPRESENT THE ACTUAL ASSEMBLY PROCEDURE. THIS DWG DOES PROVIDE TECHNICAL INFORMATION REGARDING COMPONENT LOCATION, SUGGESTED HOSE ROUTING, AND FASTENER APPLICATION.

2) WHEN FILLING MANIFOLD WITH OIL, CHARGE TO A STATIC PRESSURE OF 235 - 245 PSI.

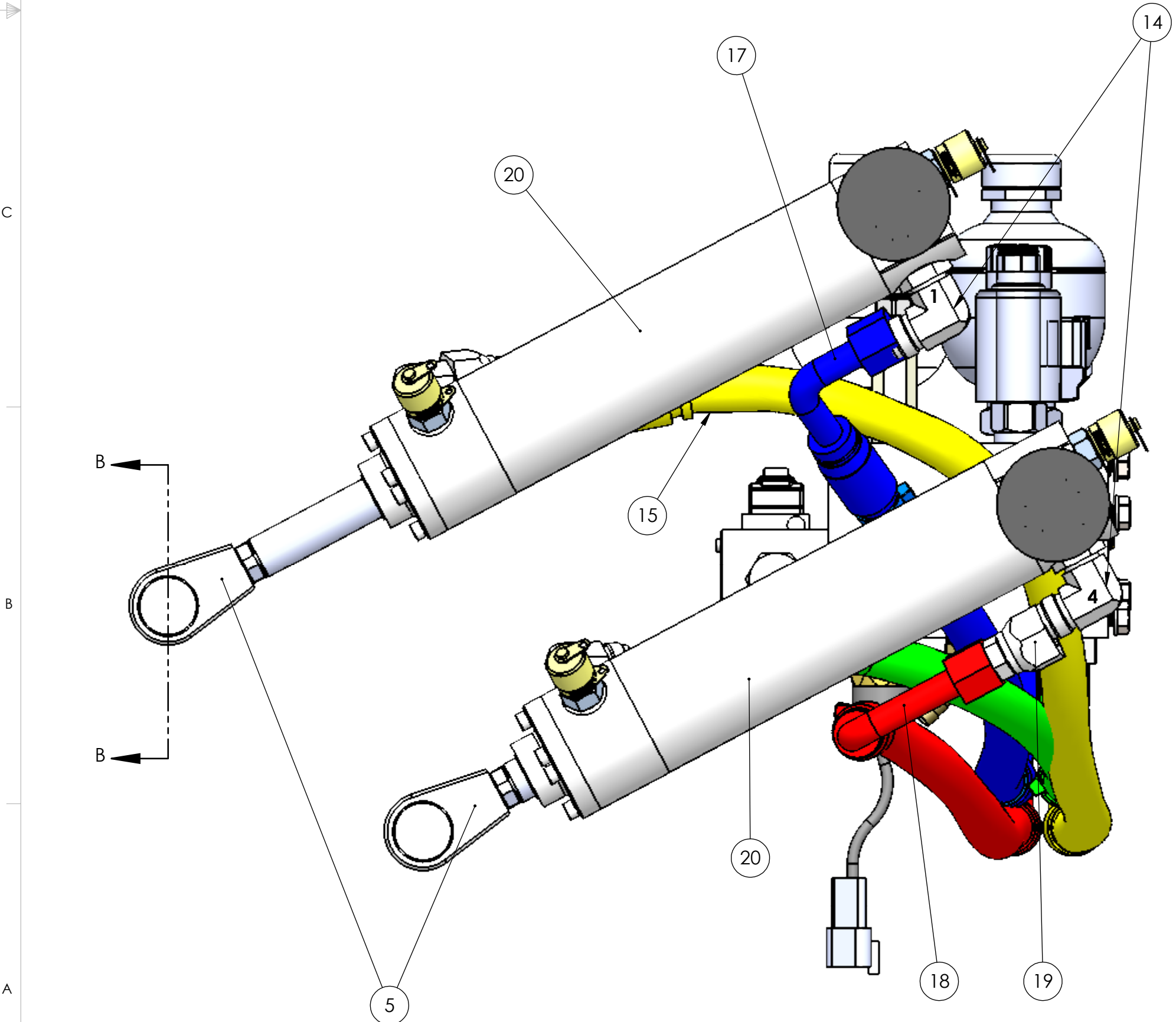
3) BEFORE INSTALLING ITEM 6 TO CYLINDER ROD, CLEAN THREADS ON BOTH COMPONENTS, FREE OF OIL AND DEBRIS. APPLY BLUE THREADLOCKER, ITEM 26 DURING ASSEMBLY OF THREADS.

4) HOSE CONNECTION PORTS ARE STAMPED NUMERICALLY 1 THRU 4 ON BOTTOM SIDE OF MANIFOLD. ACTUAL HOSE ROUTING MAY DIFFER FROM DRAWING.

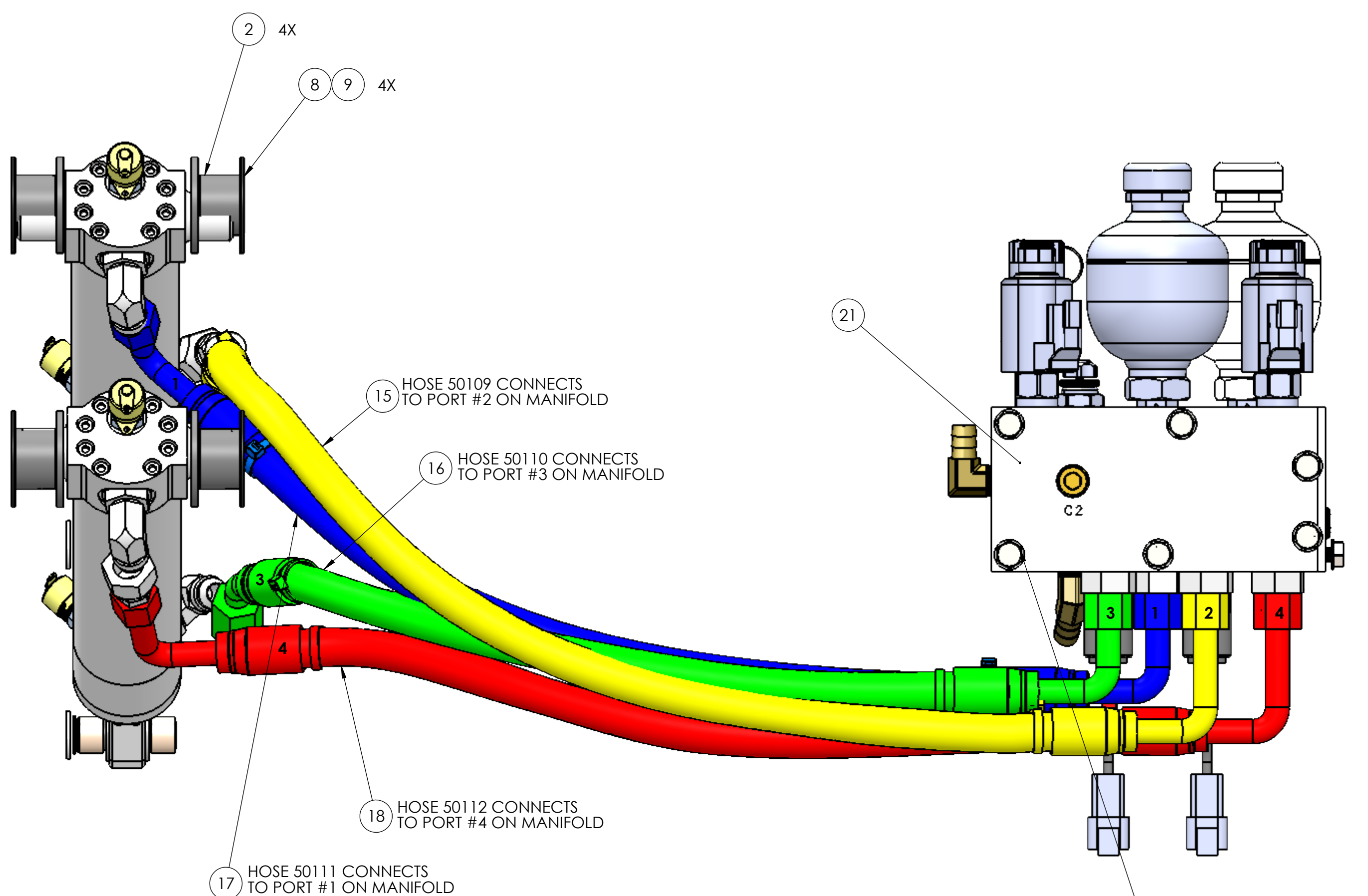
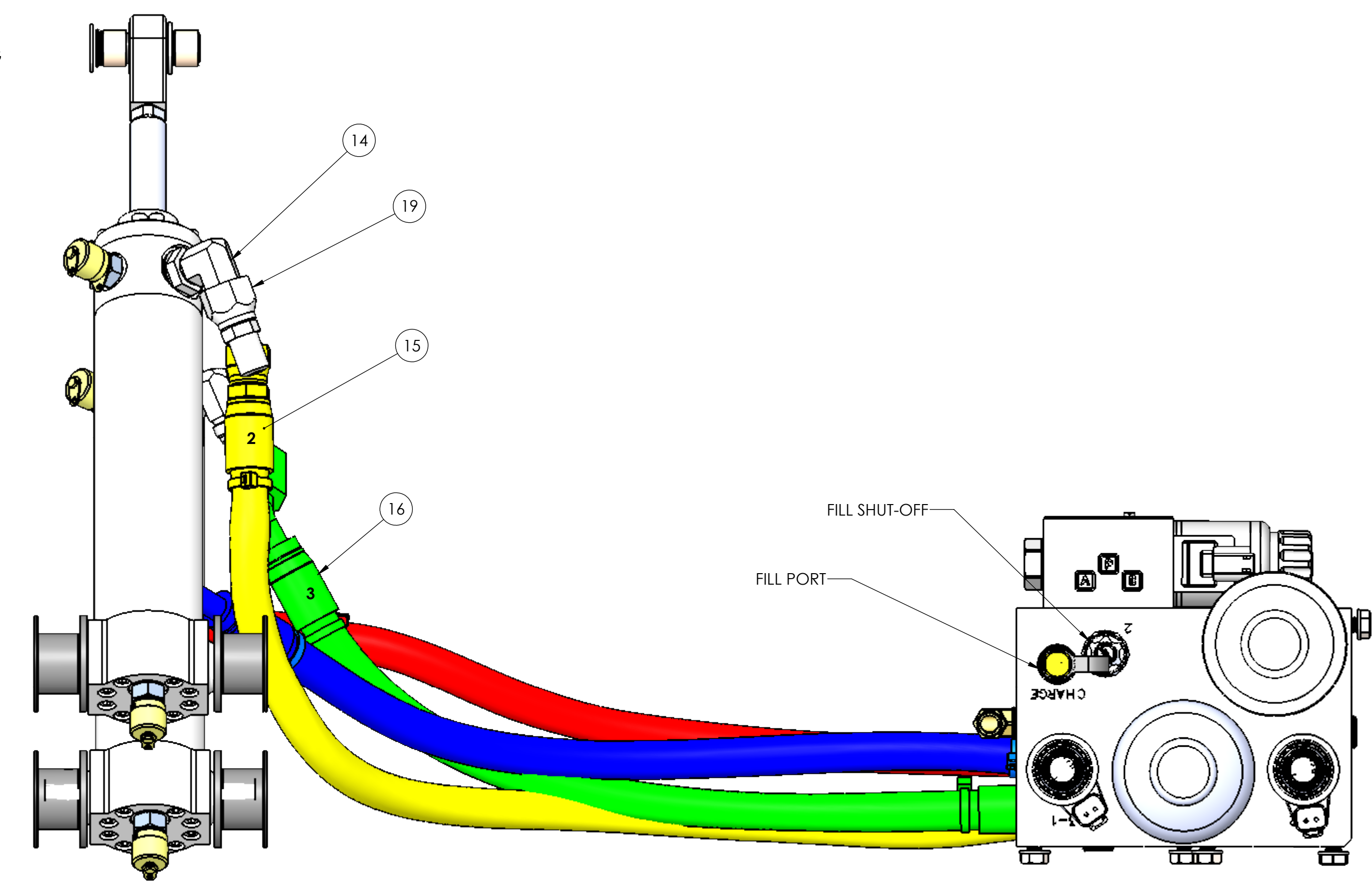
5) THE COLOR STANDARD FOR THE CABLE TIE HOSE MARKERS ARE AS FOLLOWS:  
BLUE - UPPER CYLINDERS, REAR TRUNNION END PORT - MANIFOLD PORT #1  
YELLOW - LOWER CYLINDERS, FRONT ROD END PORT - MANIFOLD PORT #2  
RED - UPPER CYLINDERS, REAR TRUNNION END PORT - MANIFOLD PORT #4  
GREEN - LOWER CYLINDERS, FRONT ROD END PORT - MANIFOLD PORT #3  
APPLY MARKERS AT BOTH ENDS OF HOSES AS SHOWN BELOW.



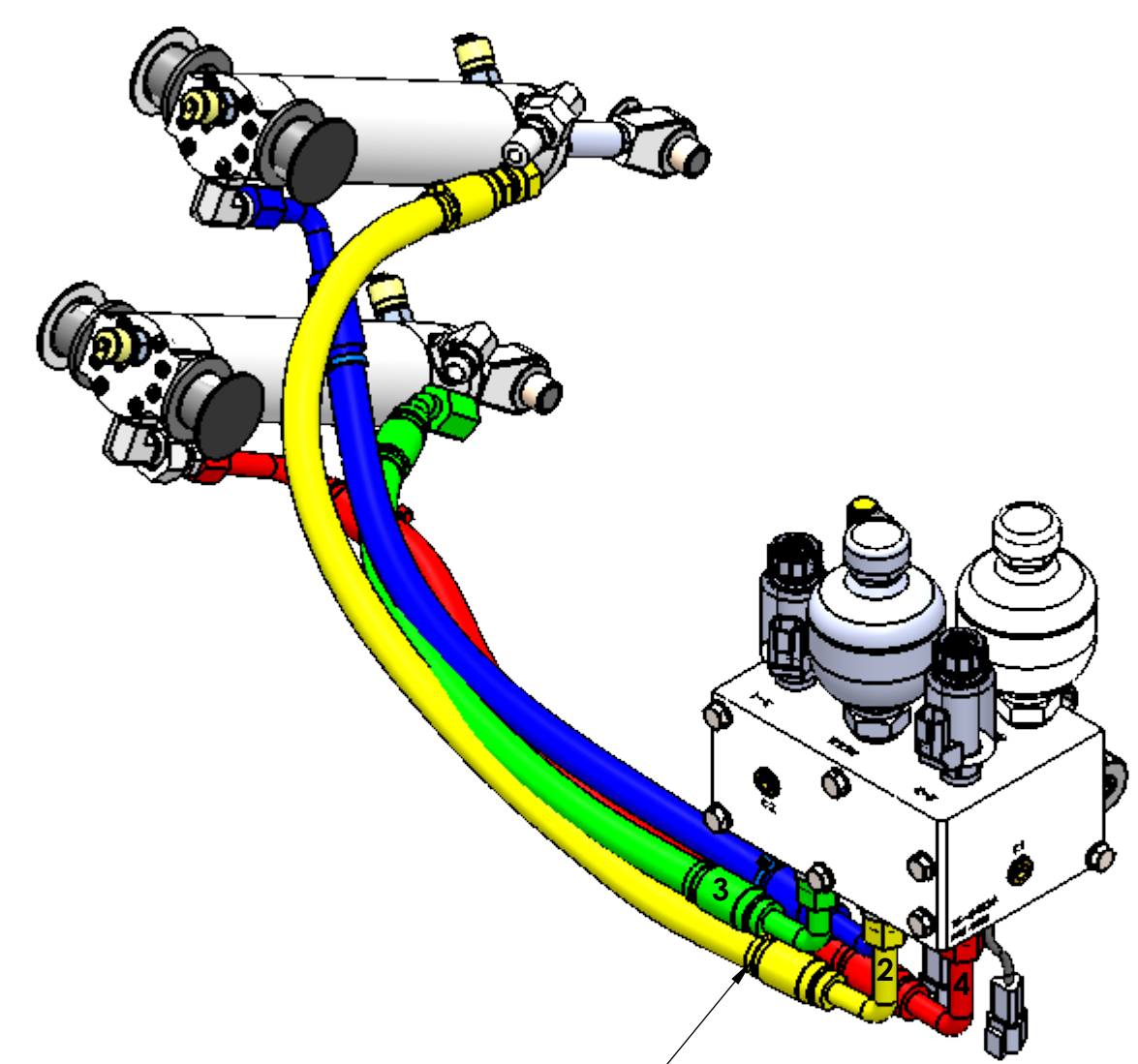
7  
STICK-ON COVER TO BE INSTALLED OVER GIMBAL SHAFT HOLE TO PROTECT AGAINST CORROSION



SEE NOTE 3



22 23 7X  
APPLY THREAD LOCKER, ITEM 26 TO BOLT THREADS. SNUG TIGHTLY.



11 10 13 12 2X  
APPLY COLORED CABLE TIES AS A MARKER FOR HOSE CONNECTIONS. SEE NOTE 3.

26	70054	THREADLOCKER, LOCTITE #243, BLUE	
25	60448	SHIM, ROUND, 12MM ID X 18MM OD X .5MM THK	2
24	60348	WASHER, GENERAL PURPOSE FLAT 0.63 1.07 OD	4
23	60330	WASHER, FLAT DIN125 M8	7
22	60246	HEX HD CAP SCREW M8-1.25 X 20mm LG. 316SS	7
21	50216	SK6 HYDRAULIC BRAKE MANIFOLD - AFS	1
20	50190	SK5 ROUND BODY CYLINDER	2
19	50141	NG5 HOSE EXTENDER SIZE-08	2
18	50112	NG5 HYDRAULIC HOSE ASSY, NG5 LOWER TRUNION END	1
17	50111	NG5 HYDRAULIC HOSE ASSY, NG5 UPPER TRUNION END	1
16	50110	NG5 HYDRAULIC HOSE ASSY, NG5 LOWER ROD END	1
15	50109	NG5 HYDRAULIC HOSE ASSY, NG5 UPPER ROD END	1
14	50106	ADAPTOR, -8 SAEORB TO -8 JIC M, 90 DEG	4
13	40439	CABLE TIE, 50# X 7" LG, BLUE	2
12	40438	CABLE TIE, 50# X 7" LG, RED	2
11	40437	CABLE TIE, 50# X 7" LG, YELLOW	2
10	40436	CABLE TIE, 50# X 7" LG, GREEN	2
9	40413	VHB TAPE, 2" OD X 1-3/8" ID X .025 THK.	4
8	40412	COVER, 2" OD X .025 THK, BLACK	4
7	40411	NG5 BRAKE PIN COVER	2
6	40354	RETAINING RING, INTERNAL, .75	2
5	11653	SK6 BRAKE ROD END	2
4	10935	BUSHING, .625 ID X .75 OD X .5 LONG, BUNTING	4
3	10934	.625 ID X .75 OD X .75 LONG, BUNTING	2
2	10933	SK5 TRUNION BUSHING	4
1	10932	NG5 PIN, BRAKE CRANK	2
ITEM NO.	PART NUMBER	DESCRIPTION	QTY.

<div>PROPRIETARY AND CONFIDENTIAL</div> <div>THE INFORMATION CONTAINED IN THIS DRAWING IS THE SOLE PROPERTY OF SEAKEEPER INCORPORATED. ANY REPRODUCTION IN PART OR AS A WHOLE WITHOUT THE WRITTEN PERMISSION OF SEAKEEPER IS PROHIBITED.</div>		<div> <b>SEAKEEPER</b><sup>®</sup></div> <div>Seakeeper Inc. 44425 Pecan Court, Suite 151 California, MD 20619</div>
WEIGHT - LBS : ---	NAME: SK6 BRAKE SUB-SYSTEM SERVICE REFERENCE	
MATERIAL:	DRAWN: WHK ENG APPR: DATE: 22 JULY 2016	DWG NUMBER 11676
	PROD APPR: DATE:	