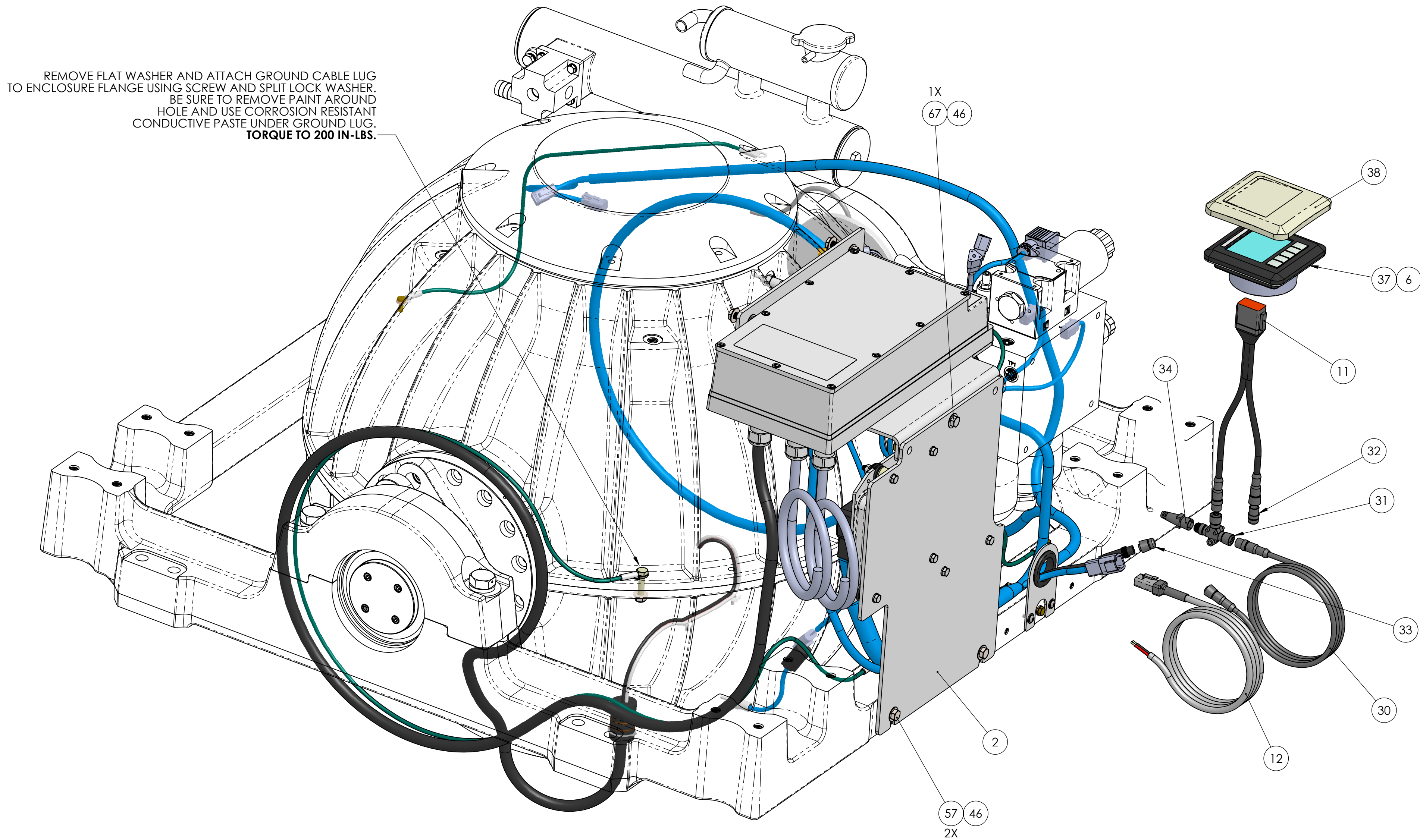



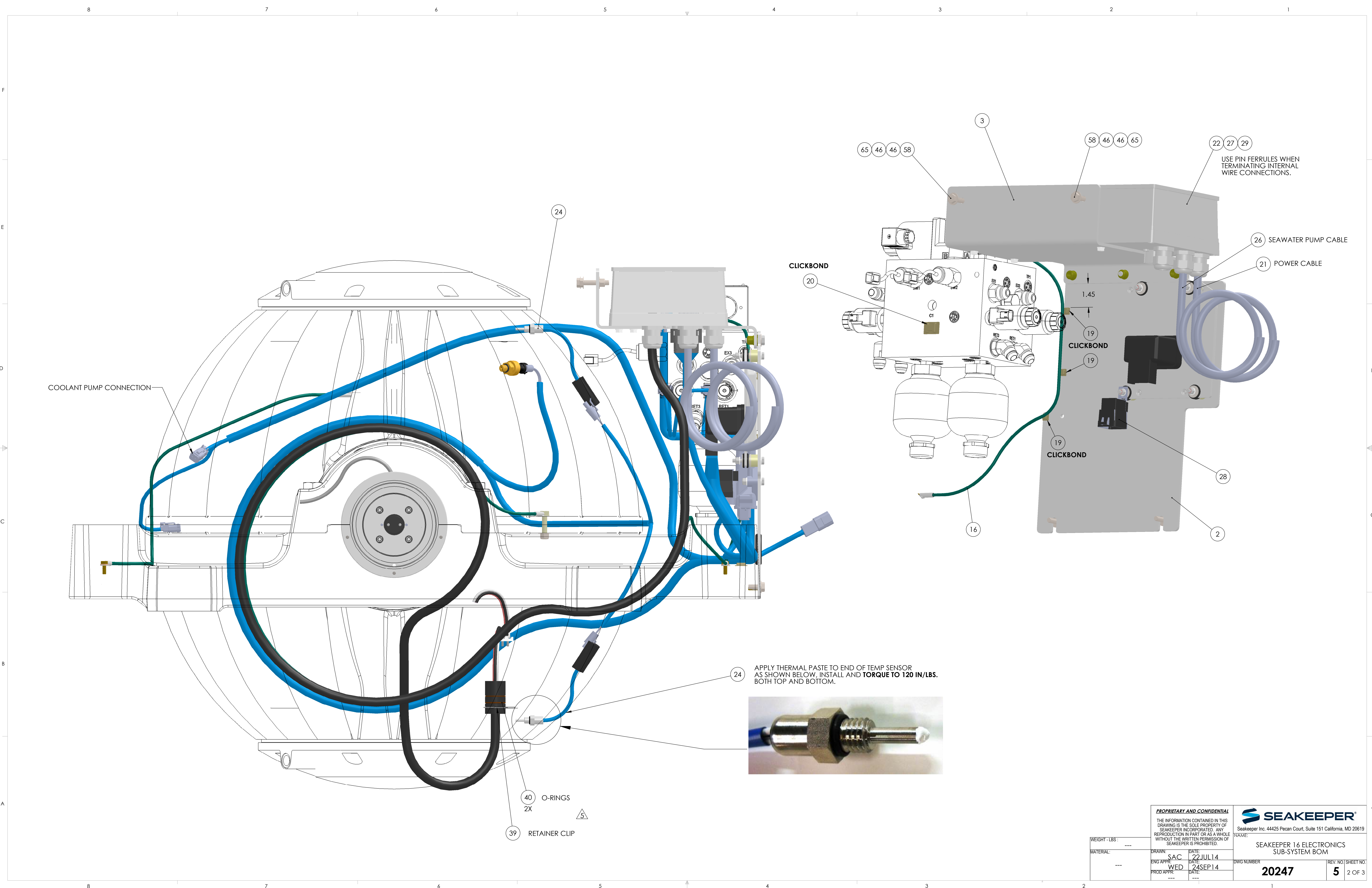
- 3) SOME ITEMS SHOWN ARE FOR BILL OF MATERIAL REFERENCE ONLY AND MAY NOT GET ASSEMBLED TO GYRO UNTIL INSTALLATION, THESE ITEMS WILL SHIP SEPARATELY.

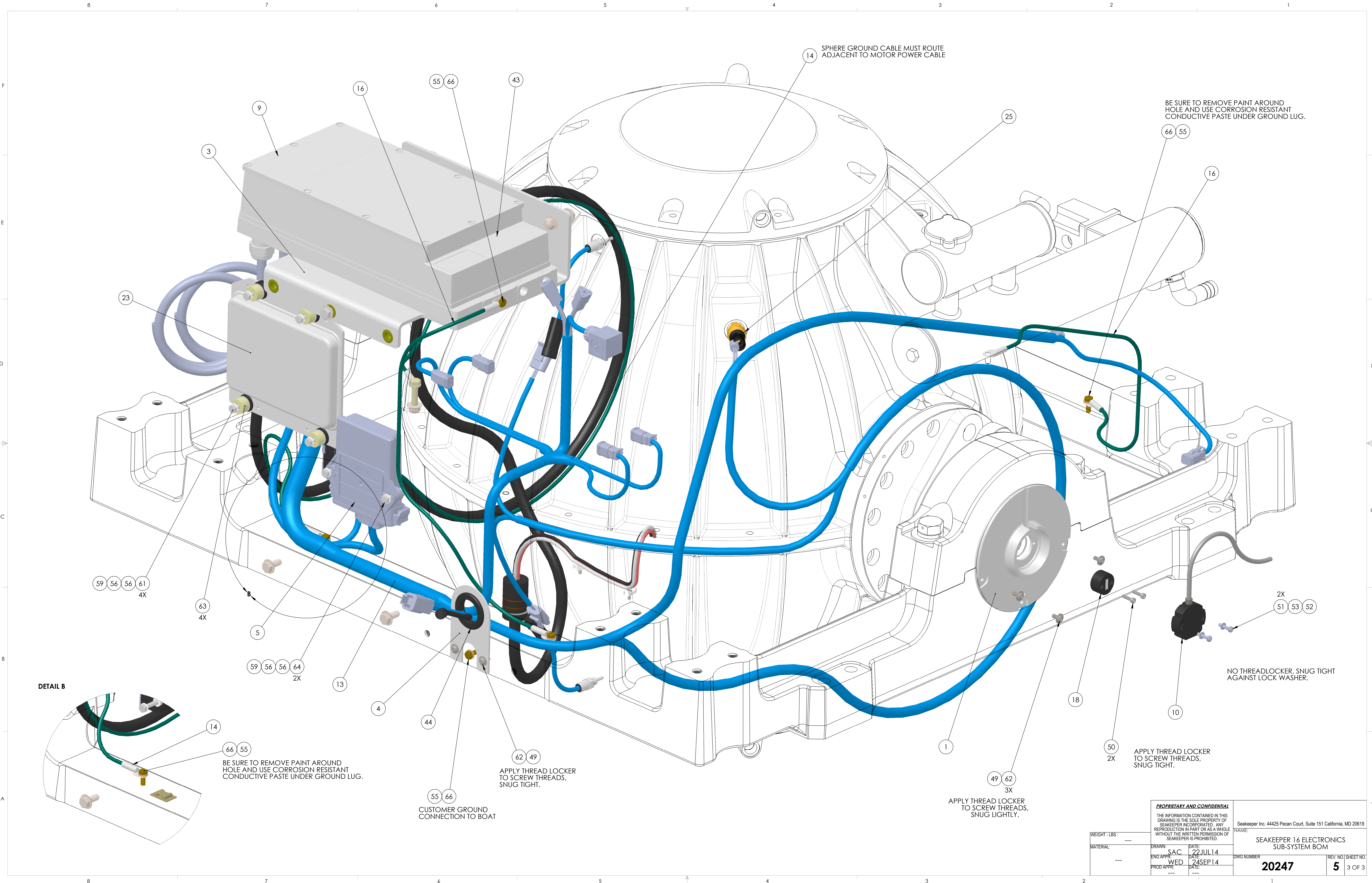
REV.	ECN NO.	ZONE	DESCRIPTION	DATE	APPROVED
1	0178		RELEASED FOR PRODUCTION	9/24/2014	WED
2	0248		GYRO CONTROLLER DISPLAY AND SUNCOVER WAS UPGRADED	4/06/2015	RSK
3	0324		SEAKEEPER LOGO REBRANDING	6/8/2015	SAC
4	0449		GROUND CABLES CHANGED SIZE FROM 4AWG TO 10AWG, REMOVED INTERNAL TOOTH LOCK WASHER FROM UNDER GROUND LUG	10/10/2016	SAC
5	0497	B5, SHI 2	O-RINGS AND RETAINER CLIP FOR MOTOR FEEDTHRU WAS ADDED TO BOM LIST. NOW SUPPLIED BY SEAKEEPER	2/3/2017	SAC



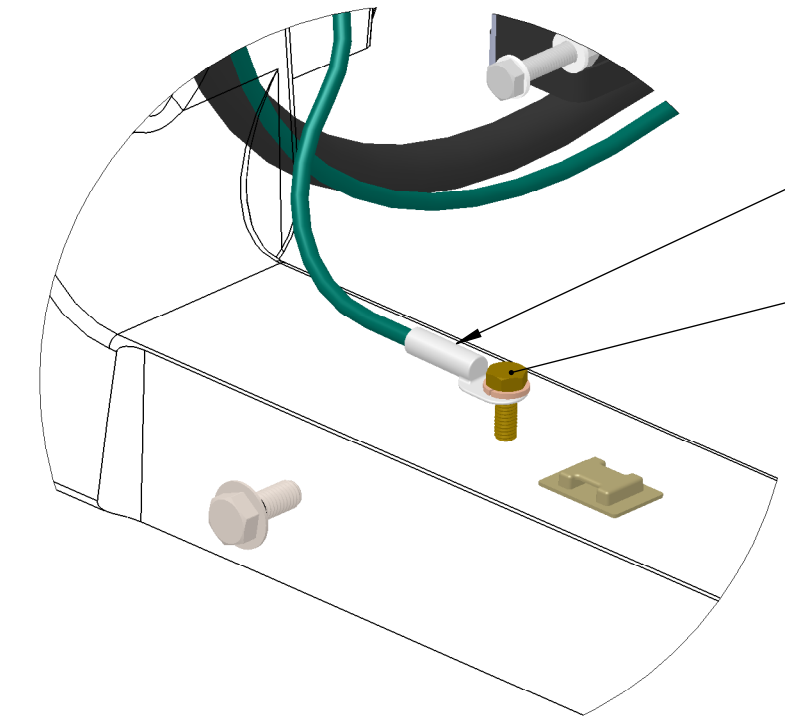
69	70061	THERMAL JOINT COMPOUND - WAKEFIELD TYPE 120	----	AR	
68	70054	THREAD LOCKER, LOC-TITE #243, BLUE	----	AR	
67	60280	SCREW, HEX HD CAP M8-1.25 X 25MM LG.	316 SS	1	
66	60278	HEX HD CAP SCREW,M6-1.0 X 16mm LG, FULL THREAD	BRASS	5	
65	60267	HEX NUT, NYLOK M8-1.2 SS	316 SS	2	
64	60262	SCREW, HEX HD CAP, M6-1.0 X 30mm LG	316 SS	2	
63	60260	STAND OFF, NYLON, .31X.75X.5	NYLON	4	
62	60259	BTN SKT HD MACHINE SCREW M5-.8 X 12mm LG	18-8 SS	5	
61	60258	HHCS M6-1.0 X 45mm LG	316 SS	4	
60	60256	HEX HEAD CAP SCREW, M6-1.0 X 16mm LG	316 SS	4	
59	60255	HEX NUT, NYLOK M6-1.0	316 SS	6	
58	60247	HEX HD CAP SCREW M8-1.25 X 40mm LG 316SS	316SS	2	
57	60246	HEX HD CAP SCREW M8-1.25 X 20mm LG. 316SS	316SS	2	
56	60223	WASHER, FLAT, M6 12MM OD	316SS	16	
55	60096	WASHER, SPLIT LOC .25 ID	SILICON BRONZE	5	
54	60087	SCREW, PHILLIPS HD PAN 8-32 X 0.38	18-8 SS	2	
53	60038	FLAT WASHER, M4	18-8 SS	2	
52	60037	SPRING LOCK WASHER, M4	18-8 SS	2	
51	60036	BUTTON SKT HD CAP SCREW, M4-.7 X 20MM LG	18-8 SS	2	
50	60034	SCREW, SOCKET HD CAP M4-.7 X 16MM FULL TD	18-8SS	2	
49	60033	FLAT WASHER #10	316SS	5	
48	60017	SKT HD CAP SCREW, #10-24 X 2.25 LG	ALLOY STEEL	8	
47	60015	WASHER, HI COLLAR LOC #10	ALLOY STEEL	8	
46	60003	WASHER, FLAT TYPE B NARROW 0.31	316 SS	7	
45	60002	WASHER, SPLIT LOC .31	316SS	1	
44	40367	GROMMET, PUSH IN 1-1/4 ID X 3/32 PANEL THKNSS.	SBR RUBBER	1	
43	40366	MOTOR DRIVE COVER LABEL	ANODIZED ALUM.	1	
42	40250	SILI-THANE 803 MARINE SEALANT	----	AR	
41	40208	CABLE TIE MOUNT, PLASTIC, #8 SCREW	PLASTIC	2	
40	40142	O-RING, SIZE 024 A75 DUROMETER	VITON	2	
39	40107	RETAINING RING, EXTERNAL, 1.25 DIA	SS	1	
38	30269	SEAKEEPER DISPLAY SUNCOVER	----	1	
37	30268	SEAKEEPER CONTROLLER DISPLAY	----	1	
36	30255	RING TERMINAL, 16-14 GA SIZE #8 INSULATED, BLUE	----	1	
35	30254	RING TERMINAL, 12-10 GA SIZE #8 INSULATED, YELLOW	----	1	
34	30249	TERMINATOR, NMEA 2000 MICRO, 120OHM FEMALE	PLASTIC	1	
33	30247	AMPHENOL LTW PLASTIC CAP, FEMALE	----	1	
32	30246	AMPHENOL LTW PLASTIC CAP, MALE	----	1	
31	30244	DISPLAY CABLE T- ADAPTOR	----	1	
30	30243	CABLE, MALE/FEMALE, NMEA 2000 PLASTIC MICRO, 25M LG.	----	1	
29	30242	FERRULE 12 AWG, .47" PIN LENGTH	----	3	
28	30241	POWER RELAY	----	1	
27	30240	FERRULE 14 AWG, .47" PIN LENGTH	----	2	
26	30239	MARINE GRADE ELECTRICAL CABLE, 14-3 SEAWATER PUMP	----	1	
25	30236	VACUUM SENSOR, SENSATA 100CP8-17	BRASS	1	
24	30235	THERMISTOR, GE WTS 1797	316 SS	2	
23	30234	ECU ASSEMBLY INCLUDING ISOLATION BUSHINGS	----	1	
22	30197	FERRULE 10 AWG, .47" PIN LENGTH	----	2	
21	30179	MARINE GRADE ELECTRICAL CABLE, 10-3 AC POWER	----	1	
20	30016	LARGE CLICK BOND WIRE TIE ANCHOR	COMPOSITE	3	
19	30015	SMALL CLICK BOND WIRE TIE ANCHOR	COMPOSITE	3	
18	30003	POSITION MARKER	----	1	
17	20254	SEAKEEPER 16 FLYWHEEL MOTOR, ROTOR ASSEMBLY	----	1	
16	20252	SEAKEEPER 16 GROUND CABLE ASSEMBLY, 25-1/2"	----	1	
15	20252	SEAKEEPER 16 GROUND CABLE ASSEMBLY, 25-1/2"	----	1	
14	20251	SEAKEEPER 16 SPHERE GROUND CABLE ASSEMBLY, 4 AWG, 69"	----	1	
13	20249	SEAKEEPER 16 WIRE HARNESS	----	1	
12	20248	GYRO DC INPUT POWER CABLE ASSEMBLY, 5M LG.	----	1	
11	20223	CANvu 355 DISPLAY INTERFACE CABLE	----	1	
10	20222	GIMBAL ANGLE SENSOR & CONNECTOR ASSEMBLY	----	1	
9	20216	SEAKEEPER MOTOR DRIVE BOX	ALUMINUM	1	
8	20213	SEAKEEPER 16 FLYWHEEL MOTOR, STATOR ASSEMBLY	----	1	
7	20210	GRAPHICS FOR SUNCOVER	----	1	
6	20208	DISPLAY LABEL	----	1	
5	20206	CAN IMU ASSEMBLY	----	1	
4	11165	SEAKEEPER 16 CABLE BULKHEAD PLATE	.100 ALUM SHT.	1	
3	11109	SEAKEEPER 16 MOTOR DRIVE BOX MOUNT	.18 ALUM. SHEET	1	
2	11101	SEAKEEPER 16 ELECTRICAL COMPONENT PANEL	.18 ALUM. SHEET	1	
1	11050	SEAKEEPER 16 ANGLE SENSOR MOUNT FINISH MACHINED	CAST ALUM	1	
ITEM NO.	PART NO.	DESCRIPTION	MATERIAL	QTY.	NOTE

		PROPRIETARY AND CONFIDENTIAL		 SEAKEEPER® Seakeeper Inc. 44425 Pecan Court, Suite 151 California, MD 20619	
		THE INFORMATION CONTAINED IN THIS DRAWING IS THE SOLE PROPERTY OF SEAKEEPER INCORPORATED. ANY REPRODUCTION IN PART OR AS A WHOLE WITHOUT THE WRITTEN PERMISSION OF SEAKEEPER IS PROHIBITED.		DRAWN BY: _____ CHECKED BY: _____ DATE: _____	
WEIGHT - LBS: _____				NAME: SEAKEEPER 16 ELECTRONICS SUB-SYSTEM BOM	
MATERIAL: _____		DATE: 27 JUL 14 ENG APPR: SAC DATE: _____		DWG NUMBER: _____	
_____		DATE: 24 SEP 14 WED PROD APPR: _____		REV. NO: 5 SHEET NO: 1 OF 3 20247	





DETAIL B



BE SURE TO REMOVE PAINT AROUND HOLE AND USE CORROSION RESISTANT CONDUCTIVE PASTE UNDER GROUND LUG.

APPLY THREAD LOCKER TO SCREW THREADS, SNUG TIGHT.

CUSTOMER GROUND CONNECTION TO BOAT

SPHERE GROUND CABLE MUST ROUTE ADJACENT TO MOTOR POWER CABLE

BE SURE TO REMOVE PAINT AROUND HOLE AND USE CORROSION RESISTANT CONDUCTIVE PASTE UNDER GROUND LUG.

NO THREADLOCKER, SNUG TIGHT AGAINST LOCK WASHER.

APPLY THREAD LOCKER TO SCREW THREADS, SNUG TIGHT.

APPLY THREAD LOCKER TO SCREW THREADS, SNUG LIGHTLY.

PROPRIETARY AND CONFIDENTIAL THE INFORMATION CONTAINED IN THIS DRAWING IS THE SOLE PROPERTY OF SEAKEEPER INCORPORATED. ANY REPRODUCTION IN PART OR AS A WHOLE WITHOUT THE WRITTEN PERMISSION OF SEAKEEPER IS PROHIBITED.			
Seakeeper Inc. 44425 Pecan Court, Suite 151 California, MD 20619			
NAME: SEAKEEPER 16 ELECTRONICS SUB-SYSTEM BOM			
DWG NUMBER: 20247		REV. NO. SHEET NO. 5 3 OF 3	
WEIGHT - LBS: ---	DRAWN: SAC	DATE: 22 JUL 14	
MATERIAL: ---	ENG APPR: WED	DATE: 24 SEP 14	
	PROD APPR: ---	DATE: ---	