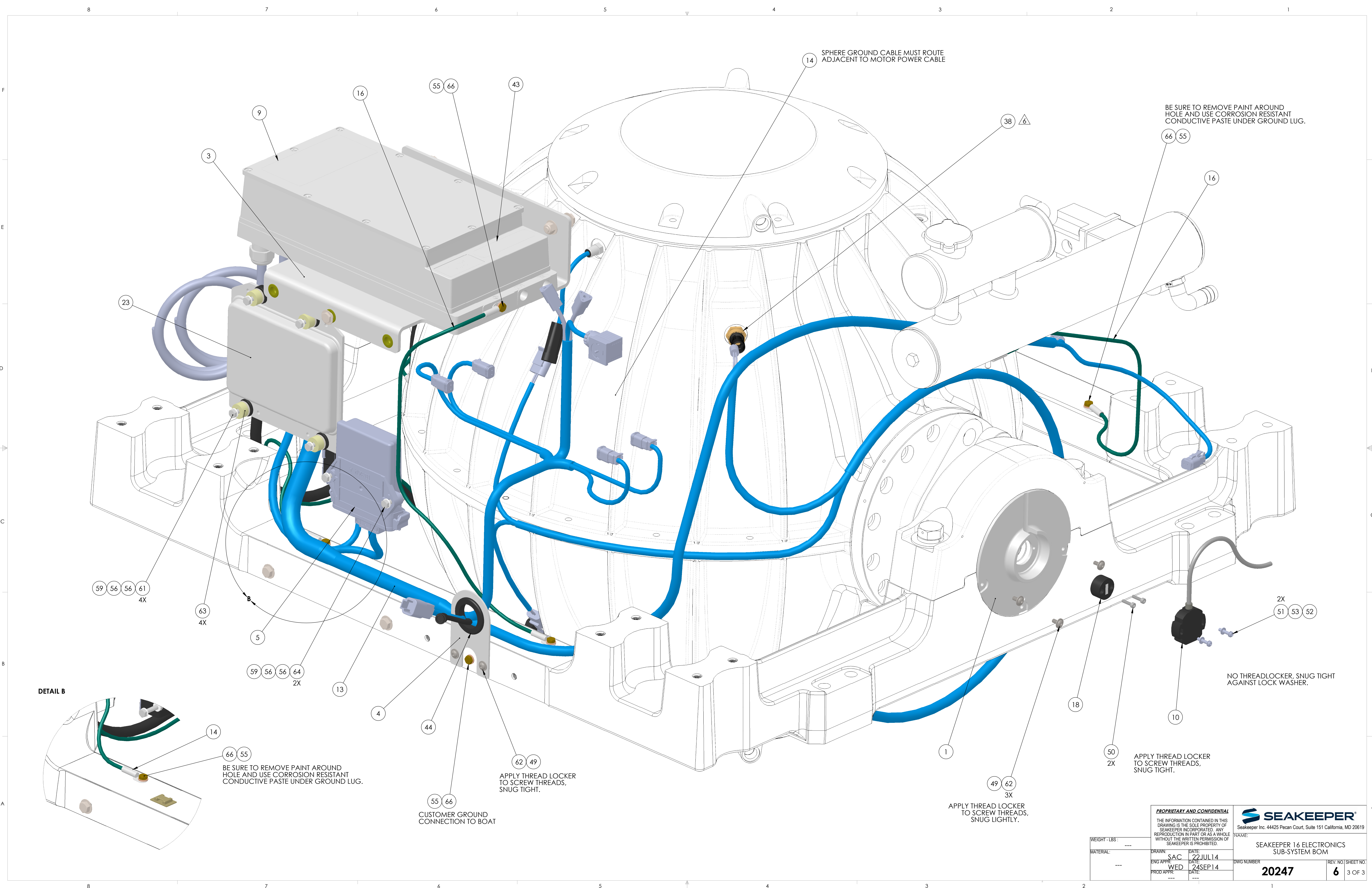
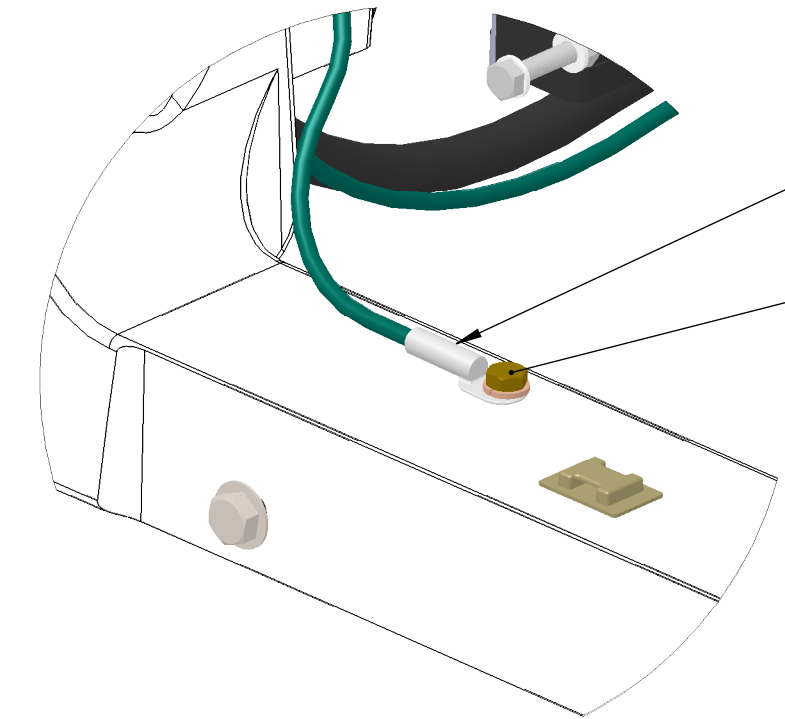


3) SOME ITEMS SHOWN ARE FOR BILL OF MATERIAL REFERENCE ONLY AND MAY NOT GET ASSEMBLED TO GYRO UNTIL INSTALLATION, THESE ITEMS WILL SHIP SEPARATELY.

6 | 1 OF 3



DETAIL B



BE SURE TO REMOVE PAINT AROUND HOLE AND USE CORROSION RESISTANT CONDUCTIVE PASTE UNDER GROUND LUG.

APPLY THREAD LOCKER TO SCREW THREADS, SNUG TIGHT.

CUSTOMER GROUND CONNECTION TO BOAT

APPLY THREAD LOCKER TO SCREW THREADS, SNUG LIGHTLY.

BE SURE TO REMOVE PAINT AROUND HOLE AND USE CORROSION RESISTANT CONDUCTIVE PASTE UNDER GROUND LUG.

NO THREADLOCKER, SNUG TIGHT AGAINST LOCK WASHER.

PROPRIETARY AND CONFIDENTIAL THE INFORMATION CONTAINED IN THIS DRAWING IS THE SOLE PROPERTY OF SEAKEEPER INCORPORATED. ANY REPRODUCTION IN PART OR AS A WHOLE WITHOUT THE WRITTEN PERMISSION OF SEAKEEPER IS PROHIBITED.		SEAKEEPER Seakeeper Inc. 44425 Pecan Court, Suite 151 California, MD 20619	
WEIGHT - LBS : ---	DRAWN : SAC	DATE : 22 JUL 14	NAME : SEAKEEPER 16 ELECTRONICS SUB-SYSTEM BOM
MATERIAL : ---	ENG APPR : WED	DATE : 24 SEP 14	DWG NUMBER : 20247
PROD APPR : ---	DATE : ---	REV. NO. / SHEET NO. : 6 / 3 OF 3	