

## SEAKEEPER ACCUMULATOR REFERENCE GUIDE

---



PRODUCT      SEAKEEPER 2 THROUGH SEAKEEPER 40

### **PURPOSE**

Provide Information and clarification for replacement accumulator part numbers used on legacy and current Seakeeper stabilizers.

### **DESCRIPTION**

Seakeeper stabilizers are equipped with hydraulic accumulators on the brake manifolds. Ongoing improvements to quality and design have resulted in various configurations that are described in this Technical Bulletin as a guide to the Seakeeper service network. The information represented is an aide to ordering spare parts when necessary, for service interventions.

When a Seakeeper model is replaced by a new design, the earlier model will carry the "EM" designation in this bulletin; the "EM" means *early model*.

**SEAKEEPER ACCUMULATOR REFERENCE GUIDE**



PRODUCT SEAKEEPER 2 THROUGH SEAKEEPER 40

SEAKEEPER MODEL	QTY USED	SERIAL # APPLICABILITY	Retired P/N	Current P/N	Adapter fitting/ Check valve current P/N
Seakeeper 2	1	2-0001 to 2-191-0173	50230-1SP	50402-1SP	Use existing 50239-1SP Adapter
	1	2-191-0174 to current	50273-1SP		50278-1SP Adapter
Seakeeper 3	1	3-0001 to 3-191-0561	50218-1SP	50282-1SP*	50220-1SP Adapter
	1	3-191-0562 to 3-194-0957	50272-1SP	50314-1SP	50278-1SP Adapter
	1	3-194-0958 to current	50281-1SP		
Seakeeper 5/3DC (EM)	2	3DC-0001 to 3DC-0741 5-0001 to 5-0915	50237-1SP 50114-1SP	50282-1SP*	50220-1SP Adapter
	2	5-0916 thru 5-1049	50218-1SP	50272-1SP	50227-1SP Adapter/Check Valve
Seakeeper 6/5	2	5-193-1512 to 5-194-1935	50218-1SP	50272-1SP	50227-1SP Adapter/Check Valve
		6-0001 thru 6-201-1935			
	1	6/5-201-1936 to 6/5-204-2595	N/A	50294-1SP	50377-1SP Adapter
		6/5-204-2596 to current			50278-1SP Adapter
Seakeeper 9/7HD	2	9/7HD-0001 to 9/7HD-1325	50114-1SP	50282-1SP*	50220-1SP Adapter
	2	9/7HD-1326 to 9/7HD-201-2838	50218-1SP	50272-1SP	50227-1SP Adapter/Check Valve
	1	9/7HD-201-2839 to current	N/A	50295-1SP	50377-1SP Adapter
Seakeeper 16/12HD (EM)	2	16-0001 to 16-0503	50230-1SP	50283-2SP**	50239-1SP Adapter
	2	16-0504 to 16-193-0911	50086-1SP 50273-1SP	50402-1SP	50167-1SP Adapter/Check Valve
Seakeeper 16/18	1	16-194-0001 to current 18-194-0001 to current	N/A	50300-1SP	50331-1SP Adapter
Seakeeper 26/20HD	2	ALL	50273-1SP	50402-1SP	50167-1SP Adapter/Check Valve
Seakeeper 35/30HD	2	ALL	50273-1SP	50402-1SP	
Seakeeper 40	2	ALL	N/A	50402-1SP	
M-7000, 7000A & 8000	2	ALL	50237-1SP	50282-1SP*	50220-1SP Adapter
M-21000, 21000A & 26000	2	ALL	50273-1SP	50402-1SP	50068 Adapter

\* Accumulator comes with adapter 50220-1SP attached

\*\* Accumulator comes with adapter 50239-1SP attached

# SEAKEEPER ACCUMULATOR REFERENCE GUIDE



PRODUCT SEAKEEPER 2 THROUGH SEAKEEPER 40

## 50282-1SP (Comes w/ Adapter 50220-1SP) (Accumulator w/o adapter: 50272-1SP)

- 0.16 Liter (10 in<sup>3</sup>)
- SAE -06 port
- Seakeeper 3 (3-0001 to 3-191-0561), Qty: 1
  - Adapter **50220-1SP**  
(-06 ORB X -06 ORB)
- Seakeeper 3DC/5 (EM) (3DC-0001 to 3DC-0741) (5-0001 to 5-0915) Qty: 2
  - Adapter **50220-1SP**
- Seakeeper 9/7HD (9/7HD-0001 to 9/7HD-1325), Qty: 2
  - Adapter **50220-1SP**
- M-7000, M-7000A & M-8000 (ALL), Qty 2
  - Adapter **50220-1SP**



## 50314-1SP

- 0.75 Liter (45.8 in<sup>3</sup>)
- SAE -08 port
- Seakeeper 3, Qty 1  
(3-191-0562 to current)
  - Adapter **50278-1SP**,  
(-08 ORB X -08 ORB)



# SEAKEEPER ACCUMULATOR REFERENCE GUIDE



PRODUCT SEAKEEPER 2 THROUGH SEAKEEPER 40

## 50272-1SP

- 0.16 Liter (10 in<sup>3</sup>)
- SAE -06 port
- Seakeeper 3DC/5 (EM), (5-0916 – 5-1049), Qty: 2
  - Check Valve **50227-1SP**  
(-06 ORB X -06 ORB)
- Seakeeper 6/5 (5-193-1512 to 5-194-1935)  
(6-0001 to 6-201-1935), Qty: 2
  - Check Valve **50227-1SP**
- Seakeeper 9/7HD (9/7HD-1326 to 9/7HD-201-2838), Qty: 2
  - Check Valve **50227-1SP**



## 50294-1SP

- 1 Liter (61 in<sup>3</sup>)
- SAE -08 port
- Seakeeper 6/5 (5-201-1969 to 2595)  
(6-201-1936 – 2595)
  - Adapter **50377-1SP**  
(-06 ORB X -08 ORB)
- Seakeeper 6/5 (5-204-2596 to current)  
(6-204-2596 to current)
  - Adapter **50278-1SP**  
(-08 ORB X -08 ORB)



# SEAKEEPER ACCUMULATOR REFERENCE GUIDE



PRODUCT SEAKEEPER 2 THROUGH SEAKEEPER 40

## 50295-1SP

- 1.4 Liter (85.4 in<sup>3</sup>)
- SAE -08 port
- Seakeeper 9/7HD (9-201-2839 to current), Qty: 1
  - Adapter **50377-1SP** (-06 ORB X -08 ORB)



## 50283-2SP (Comes w/ adapter 50239-1SP)

- 0.32 Liter (19.5 in<sup>3</sup>)
- SAE -08 port
- Seakeeper 16/12HD (EM) (16-0001 to 16-0503), Qty: 2
  - Adapter **50239-1SP** (-06 ORB X -08 ORB)



## SEAKEEPER ACCUMULATOR REFERENCE GUIDE



PRODUCT SEAKEEPER 2 THROUGH SEAKEEPER 40

### 50300-1SP

- 2 Liter (122 in<sup>3</sup>)
- SAE -12 UNF port
- Seakeeper 18/16 (16-194-0001 to current, and 18-194-0001 to current)
  - Adapter **50331-1SP** (-12 ORB X -08 ORB)



*50331-1SP*



# SEAKEEPER ACCUMULATOR REFERENCE GUIDE



PRODUCT SEAKEEPER 2 THROUGH SEAKEEPER 40

## 50402-1SP

- 0.32 Liter (19.5 in<sup>3</sup>)
- SAE -08 port
- Seakeeper 2, Qty: 1
  - Adapter **50239-1SP**  
(-06 ORB X -08 ORB)  
(2-0001 thru 2-191-0173)
  - Adapter **50278-1SP**  
(-08 ORB x -08 ORB)  
(2-191-0174 to current)
- Seakeeper 16/12HD (EM), Qty 2,  
(16-0504 through 16-193-0916)
  - Check Valve **50167-1SP**  
(-8 ORB X -08 ORB)
- Seakeeper 26/20HD, 35/30HD (ALL), Qty : 2
  - Check Valve **50167-1SP**  
(-8 ORB X -08 ORB)
- Seakeeper 40 (ALL), Qty : 2
  - Check Valve **50167-1SP**  
(-8 ORB X -08 ORB)
- M-21000, 21000A & 26000 (ALL), Qty: 2
  - Adapter **50068**  
(-08 JIC X -08 ORB)



50167-1SP



50278-1SP



50239-1SP



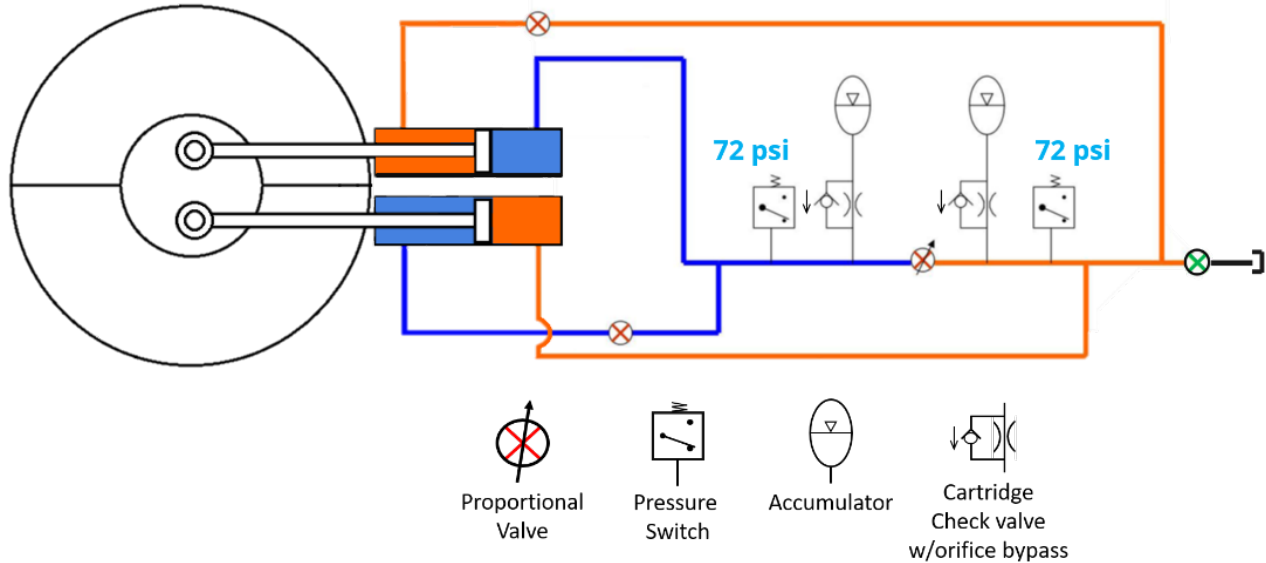
50068

# SEAKEEPER ACCUMULATOR REFERENCE GUIDE



PRODUCT SEAKEEPER 2 THROUGH SEAKEEPER 40

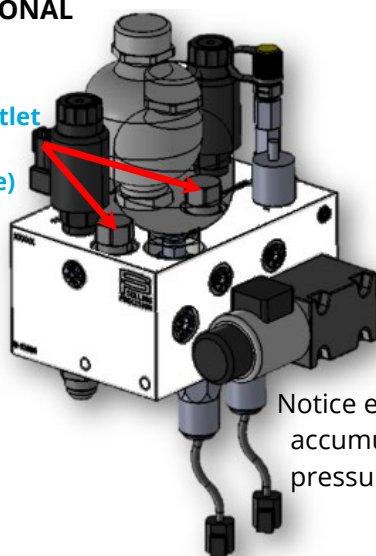
## Bi-Directional Manifold



Bi-directional manifolds are distinguishable by their two accumulators, two pressure switches, and an in-line check valve on the accumulators or a cartridge check valve in the manifold block for the accumulator outlet. Early bi-directional manifolds were painted white, but later production models came with black anodized protection; color does not always indicate the manifold type. From the schematic, the proportional valve has flow in two directions (bi-directional). This style of manifold is slowly being replaced by the later rectified manifold type found on most models produced today.

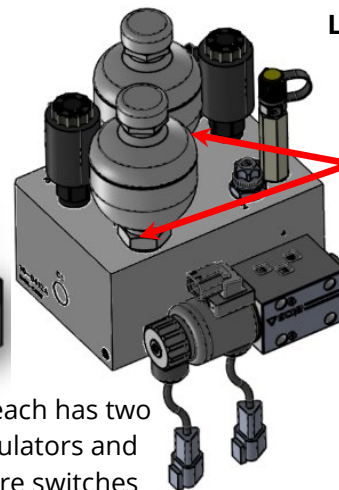
### EARLY BI-DIRECTIONAL MANIFOLD

Accumulator Outlet Check Valve (cartridge-type)



### LATE BI-DIRECTIONAL MANIFOLD

Accumulator Outlet Check Valve (in-line adapter attached to accumulator)



Notice each has two accumulators and pressure switches



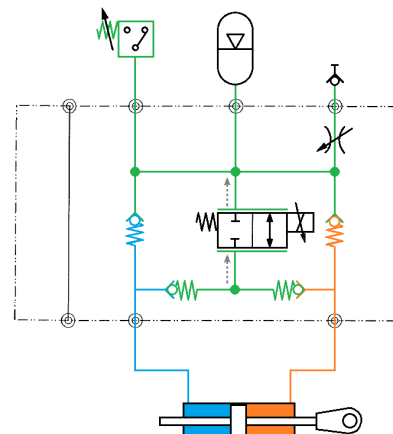
# SEAKEEPER ACCUMULATOR REFERENCE GUIDE



PRODUCT SEAKEEPER 2 THROUGH SEAKEEPER 40

## Rectified Manifold

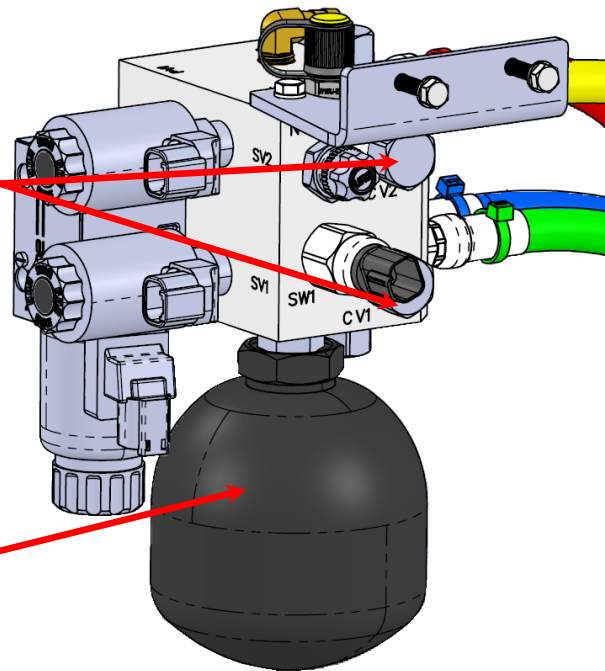
Their single accumulator and pressure switch distinguish rectified manifolds. Four cartridge check valves (cartridge-type or recessed with cap) are also used for flow control. The single accumulator will only use an adapter to attach to the manifold. The proportional valve is designed to receive flow in only one direction. The accumulator is positioned on the proportional valve outlet and is only exposed to stable system charge pressures during operation. This location extends the life of the accumulator due to fewer pressure variations.



### RECTIFIED MANIFOLD

**Flow Control Cartridge Check Valves (4 total)**  
 (NOT TO BE REMOVED FOR SERVICE IN FIELD)

**Single Accumulator**



REVISION	DESCRIPTION OF CHANGES	APPROVED	DATE
10	Added P/N 50402 with addition of Seakeeper 40 reference	A Patricio	19JUL2023
11	Replaced all 50273 accumulators with 50402	A Patricio	15AUG2024