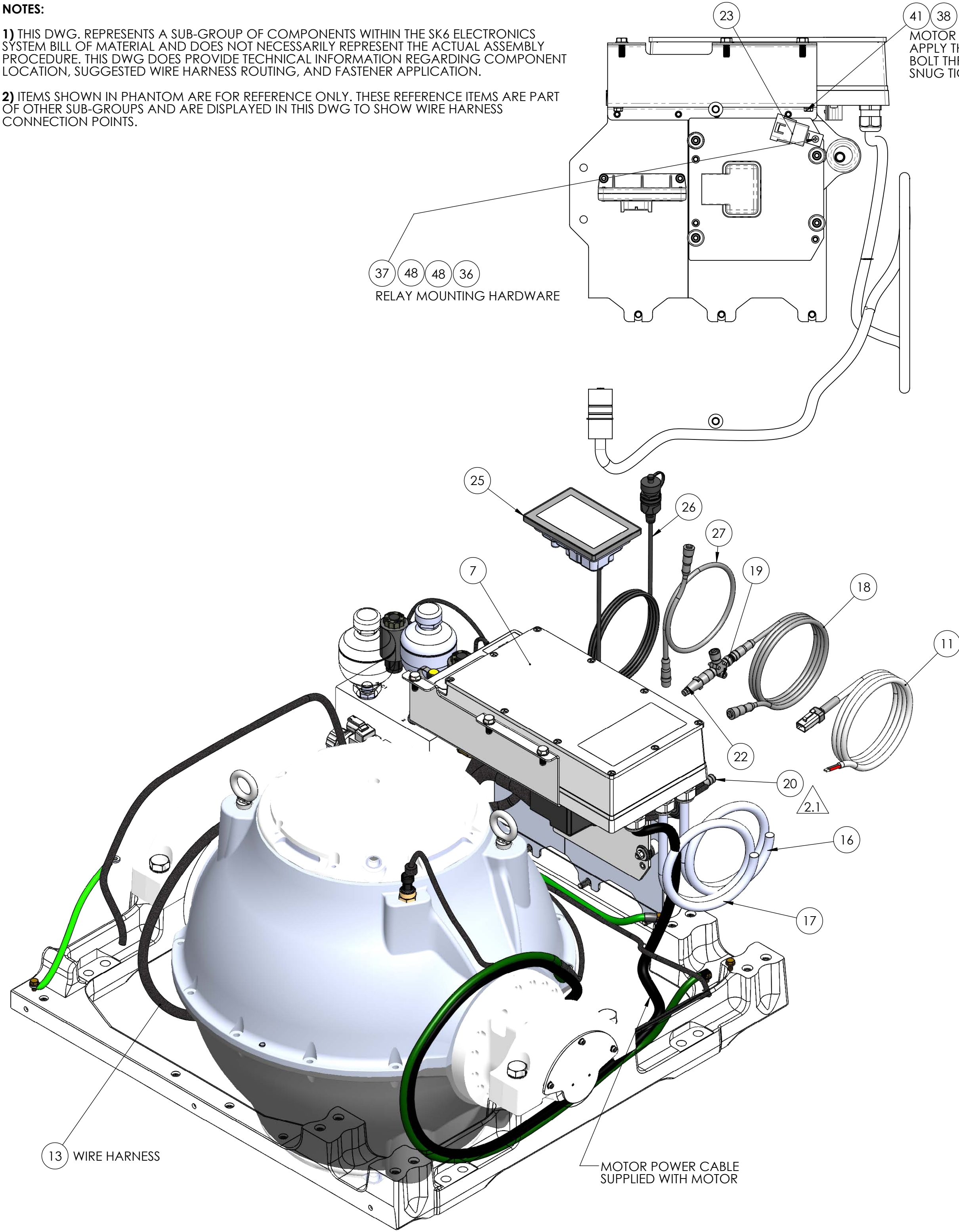


NOTES:

1) THIS DWG. REPRESENTS A SUB-GROUP OF COMPONENTS WITHIN THE SK6 ELECTRONICS SYSTEM BILL OF MATERIAL AND DOES NOT NECESSARILY REPRESENT THE ACTUAL ASSEMBLY PROCEDURE. THIS DWG DOES PROVIDE TECHNICAL INFORMATION REGARDING COMPONENT LOCATION, SUGGESTED WIRE HARNESS ROUTING, AND FASTENER APPLICATION.

2) ITEMS SHOWN IN PHANTOM ARE FOR REFERENCE ONLY. THESE REFERENCE ITEMS ARE PART OF OTHER SUB-GROUPS AND ARE DISPLAYED IN THIS DWG TO SHOW WIRE HARNESS CONNECTION POINTS.



REV NO.	ECN NO.	ZONE	DESCRIPTION	DATE	APPRVD.
2	639	SHT 2, D3	REPLACED 20206 WITH 20350	16JUL2018	EMS
2.1			REPLACED 30247 WITH 30246.	2/7/2019	BRD

57	70078	ANTI-OXIDANT COMPOUND	AR
56	70054	THREADLOCKER, LOCTITE #243, BLUE	AR
55	70001	VACUUM GREASE	AR
54	60485	SCREW, BUTTON HD SKT CAP, M10-1.5 X 16MM LG	2
53	60484	WASHER, FLAT, .75OD X .375ID X .062THK	2
52	60476	STANDOFF, ROUND, M4 X 10MM OD, 5MM LG	3
51	60440	SCREW, SOCKET HD CAP M6-1.0 X 22MM PART TD	6
50	60352	SCREW, HEX HD CAP M6-1.0 X 12MM FULL TD	5
49	60344	SCREW, PHILLIPS HD PAN M4-.7 X 10MM FULL TD	2
48	60343	WASHER, FLAT DIN125 M4	7
47	60335	SCREW, HEX HD CAP M6-1.0 X 40MM FULL TD	4
46	60330	WASHER, FLAT DIN125 M8	6
45	60329	WASHER, HI COLLAR LOC DIN7980 M6	6
44	60276	INTERNAL TOOTH LOCK WASHER, 5/16" SCREW SIZE	1
43	60262	SCREW, HEX HD CAP, M6-1.0 X 30mm LG	2
42	60260	STAND OFF, NYLON, .31X.75X.5	4
41	60256	HEX HEAD CAP SCREW, M6-1.0 X 16mm LG	10
40	60255	HEX NUT, NYLOK M6-1.0	6
39	60246	HEX HD CAP SCREW M8-1.25 X 20mm LG. 316SS	6
38	60223	WASHER, FLAT, M6 12MM OD	22
37	60177	SCREW, PHILLIPS HD PAN 8-32 X 0.63	1
36	60161	NUT, NYLOCK HEX 8-32	1
35	60096	WASHER, SPLIT LOC .25 ID	5
34	60037	SPRING LOCK WASHER, M4	3
33	60034	SCREW, SOCKET HD CAP M4-.7 X 16MM FULL TD	3
32	40398	GROMMET, PUSH-IN 1" ID x .125" PANEL THK	1
31	40366	MOTOR DRIVE COVER LABEL	1
30	40142	O-RING, SIZE 024 A75 DUROMETER	2
29	40107	RETAINING RING, EXTERNAL, 1.25 DIA	1
28	30302	ECU ASSEMBLY WITH BOOT LOAD SECURITY	1
27	30301	CABLE, MALE/FEMALE, NMEA 2000 PLASTIC MICRO	1
26	30300	6FT USB EXTENSION CABLE	1
25	30298	5 INCH TOUCH DISPLAY, GYRO CONTROLLER	1
24	30288	VACUUM SENSOR, WASCO	1
23	30259	12VDC POWER RELAY	1
22	30249	TERMINATOR, NMEA 2000 MICRO, 120OHM FEMALE	1
21	30248	POSITION MARKER (MAGNET ONLY)	1
20	30246	AMPHENOL LTW PLASTIC CAP, MALE	1
19	30244	DISPLAY CABLE T- ADAPTOR	1
18	30243	CABLE, MALE/FEMALE, NMEA 2000 PLASTIC MICRO, 25M LG.	1
17	30239	MARINE GRADE ELECTRICAL CABLE, 14-3 SEAWATER PUMP	1
16	30179	MARINE GRADE ELECTRICAL CABLE, 10-3 AC POWER	1
15	20350	CAN IMU VERSION 2	1
14	20338	GROUND CABLE, 10AWG, 43.5"	1
13	20337	SK6 GYRO WIRING HARNESS	1
12	20330	SMALL MODEL GYRO GIMBAL ANGLE SENSOR	1
11	20248	GYRO DC INPUT POWER CABLE ASSEMBLY, 5M LG.	1
10	20243	SK5 MOTOR ROTOR	
9	20241	GROUND CABLE, 10AWG, 22"	1
8	20228	GROUND CABLE, 10AWG, 13"	1
7	20216	SEAKEEPER MOTOR DRIVE BOX	1
6	20211	SK5 FLYWHEEL MOTOR	1
5	11657	SK6 ANGLE SENSOR MOUNT	1
4	11146	SK5 WIRE BULKHEAD PLATE	1
3	11112	SK5 ELECTRONICS BRACKET, MOTOR DRIVE BOX	1
2	11111	SK5 ELECTRONICS BRACKET, ECU	1
1	11110	SK5 ELECTRONICS BRACKET, IMU	1

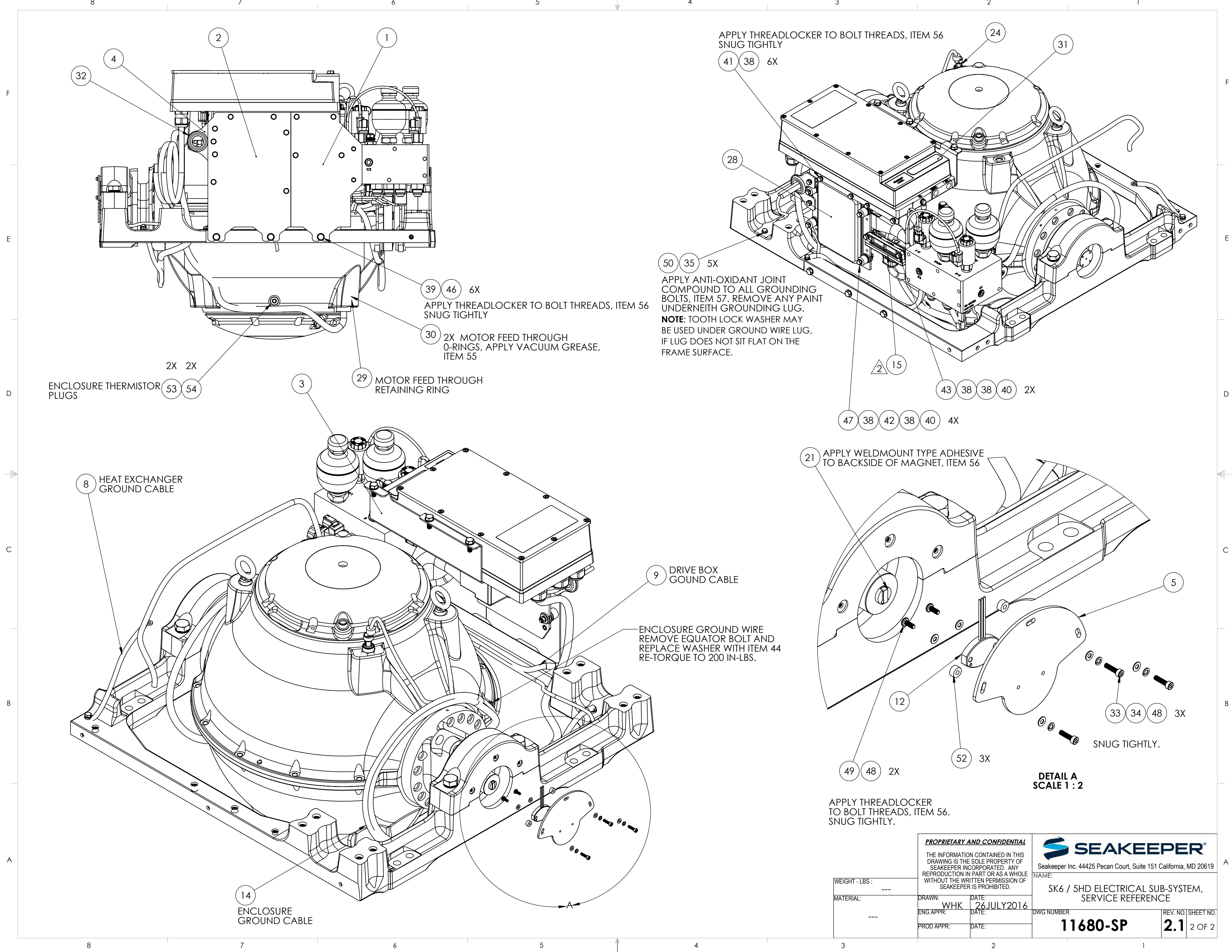
ITEM NO.	PART NUMBER	DESCRIPTION	QTY.
57	70078	ANTI-OXIDANT COMPOUND	AR
56	70054	THREADLOCKER, LOCTITE #243, BLUE	AR
55	70001	VACUUM GREASE	AR
54	60485	SCREW, BUTTON HD SKT CAP, M10-1.5 X 16MM LG	2
53	60484	WASHER, FLAT, .75OD X .375ID X .062THK	2
52	60476	STANDOFF, ROUND, M4 X 10MM OD, 5MM LG	3
51	60440	SCREW, SOCKET HD CAP M6-1.0 X 22MM PART TD	6
50	60352	SCREW, HEX HD CAP M6-1.0 X 12MM FULL TD	5
49	60344	SCREW, PHILLIPS HD PAN M4-.7 X 10MM FULL TD	2
48	60343	WASHER, FLAT DIN125 M4	7
47	60335	SCREW, HEX HD CAP M6-1.0 X 40MM FULL TD	4
46	60330	WASHER, FLAT DIN125 M8	6
45	60329	WASHER, HI COLLAR LOC DIN7980 M6	6
44	60276	INTERNAL TOOTH LOCK WASHER, 5/16" SCREW SIZE	1
43	60262	SCREW, HEX HD CAP, M6-1.0 X 30mm LG	2
42	60260	STAND OFF, NYLON, .31X.75X.5	4
41	60256	HEX HEAD CAP SCREW, M6-1.0 X 16mm LG	10
40	60255	HEX NUT, NYLOK M6-1.0	6
39	60246	HEX HD CAP SCREW M8-1.25 X 20mm LG. 316SS	6
38	60223	WASHER, FLAT, M6 12MM OD	22
37	60177	SCREW, PHILLIPS HD PAN 8-32 X 0.63	1
36	60161	NUT, NYLOCK HEX 8-32	1
35	60096	WASHER, SPLIT LOC .25 ID	5
34	60037	SPRING LOCK WASHER, M4	3
33	60034	SCREW, SOCKET HD CAP M4-.7 X 16MM FULL TD	3
32	40398	GROMMET, PUSH-IN 1" ID x .125" PANEL THK	1
31	40366	MOTOR DRIVE COVER LABEL	1
30	40142	O-RING, SIZE 024 A75 DUROMETER	2
29	40107	RETAINING RING, EXTERNAL, 1.25 DIA	1
28	30302	ECU ASSEMBLY WITH BOOT LOAD SECURITY	1
27	30301	CABLE, MALE/FEMALE, NMEA 2000 PLASTIC MICRO	1
26	30300	6FT USB EXTENSION CABLE	1
25	30298	5 INCH TOUCH DISPLAY, GYRO CONTROLLER	1
24	30288	VACUUM SENSOR, WASCO	1
23	30259	12VDC POWER RELAY	1
22	30249	TERMINATOR, NMEA 2000 MICRO, 120OHM FEMALE	1
21	30248	POSITION MARKER (MAGNET ONLY)	1
20	30246	AMPHENOL LTW PLASTIC CAP, MALE	1
19	30244	DISPLAY CABLE T- ADAPTOR	1
18	30243	CABLE, MALE/FEMALE, NMEA 2000 PLASTIC MICRO, 25M LG.	1
17	30239	MARINE GRADE ELECTRICAL CABLE, 14-3 SEAWATER PUMP	1
16	30179	MARINE GRADE ELECTRICAL CABLE, 10-3 AC POWER	1
15	20350	CAN IMU VERSION 2	1
14	20338	GROUND CABLE, 10AWG, 43.5"	1
13	20337	SK6 GYRO WIRING HARNESS	1
12	20330	SMALL MODEL GYRO GIMBAL ANGLE SENSOR	1
11	20248	GYRO DC INPUT POWER CABLE ASSEMBLY, 5M LG.	1
10	20243	SK5 MOTOR ROTOR	
9	20241	GROUND CABLE, 10AWG, 22"	1
8	20228	GROUND CABLE, 10AWG, 13"	1
7	20216	SEAKEEPER MOTOR DRIVE BOX	1
6	20211	SK5 FLYWHEEL MOTOR	1
5	11657	SK6 ANGLE SENSOR MOUNT	1
4	11146	SK5 WIRE BULKHEAD PLATE	1
3	11112	SK5 ELECTRONICS BRACKET, MOTOR DRIVE BOX	1
2	11111	SK5 ELECTRONICS BRACKET, ECU	1
1	11110	SK5 ELECTRONICS BRACKET, IMU	1

WEIGHT - LBS : ---		DRAWN: WHK		DATE: 26JULY2016		DWG NUMBER		REV. NO. SHEET NO.	
MATERIAL: ---		ENG APPR:		DATE:		11680-SP		2.1 1 OF 2	
PROD APPR:		DATE:							

PROPRIETARY AND CONFIDENTIAL
THE INFORMATION CONTAINED IN THIS DRAWING IS THE SOLE PROPERTY OF SEAKEEPER INCORPORATED. ANY REPRODUCTION IN PART OR AS A WHOLE WITHOUT THE WRITTEN PERMISSION OF SEAKEEPER IS PROHIBITED.

SEAKEEPER
Seakeeper Inc. 44425 Pecan Court, Suite 151 California, MD 20619
NAME:

SK6 / 5HD ELECTRICAL SUB-SYSTEM, SERVICE REFERENCE



ENCLOSURE THERMISTOR PLUGS
2X 2X
53 54

8 HEAT EXCHANGER GROUND CABLE

14 ENCLOSURE GROUND CABLE

39 46 6X
APPLY THREADLOCKER TO BOLT THREADS, ITEM 56
SNUG TIGHTLY

30 2X MOTOR FEED THROUGH O-RINGS, APPLY VACUUM GREASE, ITEM 55

29 MOTOR FEED THROUGH RETAINING RING

9 DRIVE BOX GROUND CABLE

ENCLOSURE GROUND WIRE
REMOVE EQUATOR BOLT AND
REPLACE WASHER WITH ITEM 44
RE-TORQUE TO 200 IN-LBS.


APPLY THREADLOCKER TO BOLT THREADS, ITEM 56
SNUG TIGHTLY

50 35 5X
APPLY ANTI-OXIDANT JOINT COMPOUND TO ALL GROUNDING BOLTS, ITEM 57. REMOVE ANY PAINT UNDERNEATH GROUNDING LUG.
NOTE: TOOTH LOCK WASHER MAY BE USED UNDER GROUND WIRE LUG, IF LUG DOES NOT SIT FLAT ON THE FRAME SURFACE.

21 APPLY WELDMOUNT TYPE ADHESIVE TO BACKSIDE OF MAGNET, ITEM 56

APPLY THREADLOCKER TO BOLT THREADS, ITEM 56.
SNUG TIGHTLY.

DETAIL A
SCALE 1 : 2

PROPRIETARY AND CONFIDENTIAL		 Seakeeper Inc. 44425 Pecan Court, Suite 151 California, MD 20619	
THE INFORMATION CONTAINED IN THIS DRAWING IS THE SOLE PROPERTY OF SEAKEEPER INCORPORATED. ANY REPRODUCTION IN PART OR AS A WHOLE WITHOUT THE WRITTEN PERMISSION OF SEAKEEPER IS PROHIBITED.		NAME: SK6 / 5HD ELECTRICAL SUB-SYSTEM, SERVICE REFERENCE	
WEIGHT - LBS : ---	DRAWN: WHK	DATE: 26JULY2016	DWG NUMBER 11680-SP
MATERIAL: ---	ENG APPR: ---	DATE: ---	REV. NO. SHEET NO. 2.1 2 OF 2
PROD APPR: ---		DATE: ---	