

NOTES:

1) THIS DWG. REPRESENTS A SUB-GROUP OF COMPONENTS WITHIN THE SK6/5 ELECTRONICS SYSTEM BILL OF MATERIAL AND DOES NOT NECESSARILY REPRESENT THE ACTUAL ASSEMBLY PROCEDURE. THIS DWG DOES PROVIDE TECHNICAL INFORMATION REGARDING COMPONENT LOCATION, SUGGESTED WIRE HARNESS ROUTING, AND FASTENER APPLICATION.

2) ITEMS SHOWN IN PHANTOM ARE FOR REFERENCE ONLY. THESE REFERENCE ITEMS ARE PART OF OTHER SUB-GROUPS AND ARE DISPLAYED IN THIS DWG TO SHOW WIRE HARNESS CONNECTION POINTS.

RELAY MOUNTING HARDWARE

MOTOR DRIVE BOX BOLTS
APPLY THREADLOCKER TO
BOLT THREADS, SNUG TIGHTLY

REV NO.	ECN NO.	ZONE	DESCRIPTION	DATE	APPRVD.
2	639	SHT 2, D3	REPLACED 20206 WITH 20350	16JUL2018	EMS
2.1			REPLACED 30247 WITH 30246.	2/7/2019	BRD
3	759		ADD FLYWHEEL GUARD.	10/8/2019	EMS

60	70078	ANTI-OXIDANT COMPOUND	AR
59	70054	THREADLOCKER, LOCTITE #243, BLUE	AR
58	70001	VACUUM GREASE	AR
57	60494	SCREW, HEX HD FLANGE, 10-32 X .375	2
56	60485	SCREW, BUTTON HD SKT CAP, M10-1.5 X 16MM LG	2
55	60484	WASHER, FLAT, .750D X .375ID X .062THK	2
54	60476	STANDOFF, ROUND, M4 X 10MM OD, 5MM LG	3
53	60440	SCREW, SOCKET HD CAP M6-1.0 X 22MM PART TD	6
52	60352	SCREW, HEX HD CAP M6-1.0 X 12MM FULL TD	5
51	60344	SCREW, PHILLIPS HD PAN M4-.7 X 10MM FULL TD	2
50	60343	WASHER, FLAT DIN125 M4	7
49	60335	SCREW, HEX HD CAP M6-1.0 X 40MM FULL TD	4
48	60330	WASHER, FLAT DIN125 M8	6
47	60329	WASHER, HI COLLAR LOC DIN7980 M6	6
46	60276	INTERNAL TOOTH LOCK WASHER, 5/16" SCREW SIZE	1
45	60262	SCREW, HEX HD CAP, M6-1.0 X 30mm LG	2
44	60260	STAND OFF, NYLON, .31X.75X.5	4
43	60256	HEX HEAD CAP SCREW, M6-1.0 X 16mm LG	10
42	60255	HEX NUT, NYLOK M6-1.0	6
41	60246	HEX HD CAP SCREW M8-1.25 X 20mm LG. 316SS	6
40	60223	WASHER, FLAT, M6 12MM OD	22
39	60177	SCREW, PHILLIPS HD PAN 8-32 X 0.63	1
38	60161	NUT, NYLOCK HEX 8-32	1
37	60096	WASHER, SPLIT LOC .25 ID	5
36	60037	SPRING LOCK WASHER, M4	3
35	60034	SCREW, SOCKET HD CAP M4-.7 X 16MM FULL TD	3
34	40398	GROMMET, PUSH-IN 1" ID x .125" PANEL THK	1
33	40366	MOTOR DRIVE COVER LABEL	1
32	40142	O-RING, SIZE 024 A75 DUROMETER	2
31	40107	RETAINING RING, EXTERNAL, 1.25 DIA	1
30	30302	ECU ASSEMBLY WITH BOOT LOAD SECURITY	1
29	30301	CABLE, MALE/FEMALE, NMEA 2000 PLASTIC MICRO	1
28	30300	6FT USB EXTENSION CABLE	1
27	30298	5 INCH TOUCH DISPLAY, GYRO CONTROLLER	1
26	30288	VACUUM SENSOR, WASCO	1
25	30259	12VDC POWER RELAY	1
24	30249	TERMINATOR, NMEA 2000 MICRO, 120OHM FEMALE	1
23	30248	POSITION MARKER (MAGNET ONLY)	1
22	30246	AMPHENOL LTW PLASTIC CAP, MALE	1
21	30244	DISPLAY CABLE T- ADAPTOR	1
20	30243	CABLE, MALE/FEMALE, NMEA 2000 PLASTIC MICRO, 25M LG.	1
19	30239	MARINE GRADE ELECTRICAL CABLE, 14-3 SEAWATER PUMP	1
18	30179	MARINE GRADE ELECTRICAL CABLE, 10-3 AC POWER	1
17	30012	CABLE TIE, 50#, BLACK	1
16	20350	CAN IMU VERSION 2	1
15	20338	GROUND CABLE, 10AWG, 43.5"	1
14	20337	SK6 GYRO WIRING HARNESS	1
13	20330	SMALL MODEL GYRO GIMBAL ANGLE SENSOR	1
12	20248	GYRO DC INPUT POWER CABLE ASSEMBLY, 5M LG.	1
11	20243	SK5 MOTOR ROTOR	1
10	20241	GROUND CABLE, 10AWG, 22"	1
9	20228	GROUND CABLE, 10AWG, 13"	1
8	20216	SEAKEEPER MOTOR DRIVE BOX	1
7	20211	SK5 FLYWHEEL MOTOR	1
6	12155	SK6 MOTOR CABLE SHIELD	1
5	11657	SK6 ANGLE SENSOR MOUNT	1
4	11146	SK5 WIRE BULKHEAD PLATE	1
3	11112	SK5 ELECTRONICS BRACKET, MOTOR DRIVE BOX	1
2	11111	SK6 ELECTRONICS BRACKET, ECU	1
1	11110	SK5 ELECTRONICS BRACKET, IMU	1

ITEM NO.	PART NUMBER	DESCRIPTION	QTY.

PROPRIETARY AND CONFIDENTIAL
THE INFORMATION CONTAINED IN THIS
DRAWING IS THE SOLE PROPERTY OF
SEAKEEPER INCORPORATED. ANY
REPRODUCTION IN PART OR AS A WHOLE
WITHOUT THE WRITTEN PERMISSION OF
SEAKEEPER IS PROHIBITED.

SEAKEEPER
Seakeeper Inc. 44425 Pecan Court, Suite 151 California, MD 20619
NAME:

SK6/5 ELECTRONICS SUB-SYSTEM,
SERVICE REFERENCE

DWG NUMBER
11680-SP
REV. NO. SHEET NO.
3 1 OF 2

WEIGHT - LBS : ---

MATERIAL: ---

DRAWN: WHK

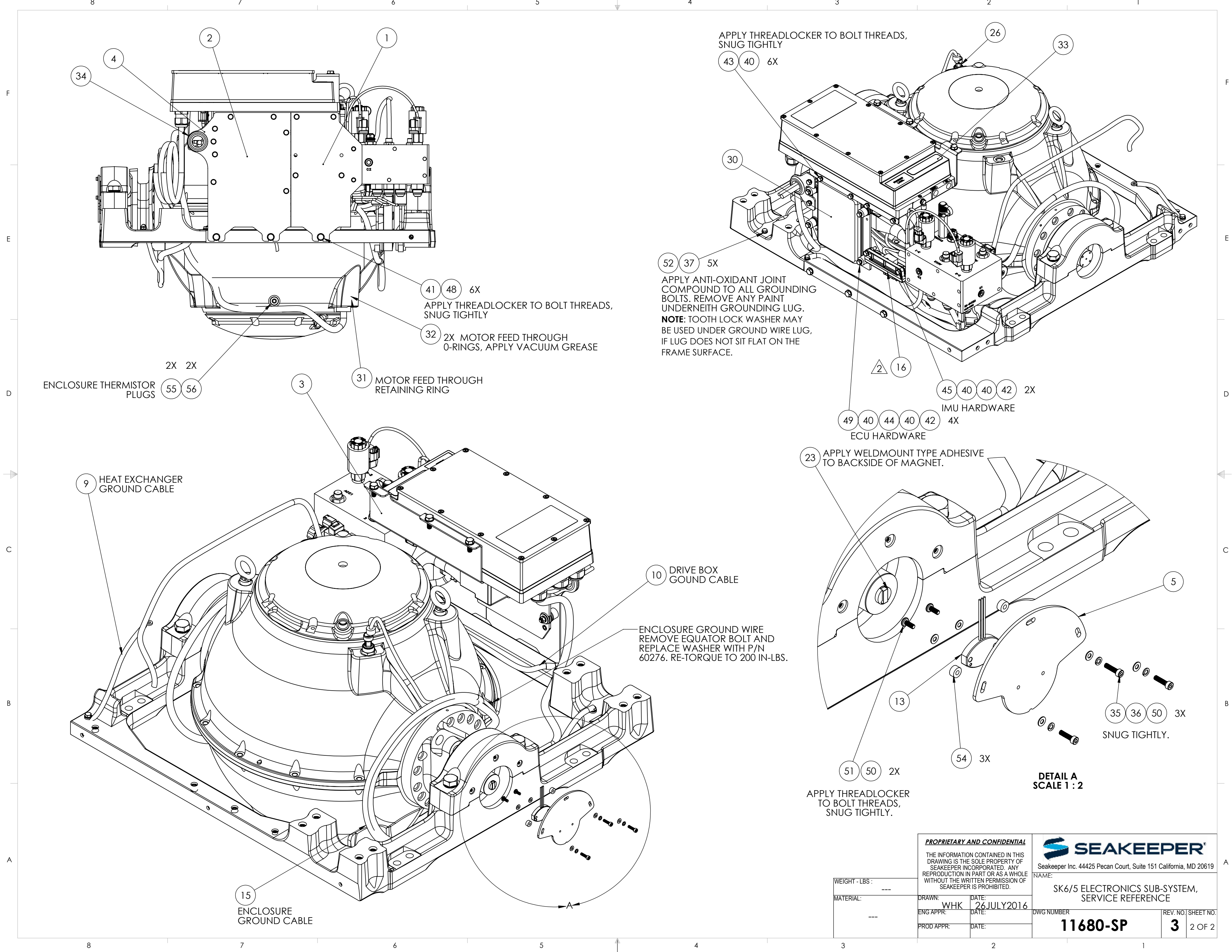
DATE: 26JULY2016

ENG APPR:

DATE:

PROD APPR:

DATE:



PROPRIETARY AND CONFIDENTIAL

THE INFORMATION CONTAINED IN THIS DRAWING IS THE SOLE PROPERTY OF SEAKEEPER INCORPORATED. ANY REPRODUCTION IN PART OR AS A WHOLE WITHOUT THE WRITTEN PERMISSION OF SEAKEEPER IS PROHIBITED.



Seakeeper Inc. 44425 Pecan Court, Suite 151 California, MD 20619

NAME: SK6/5 ELECTRONICS SUB-SYSTEM, SERVICE REFERENCE

WEIGHT - LBS: ---

MATERIAL: ---

DRAWN: WHK

DATE: 26 JULY 2016

ENG APPR:

DATE:

PROD APPR:

DATE:

DWG NUMBER

11680-SP

REV. NO. SHEET NO.

3

2 OF 2