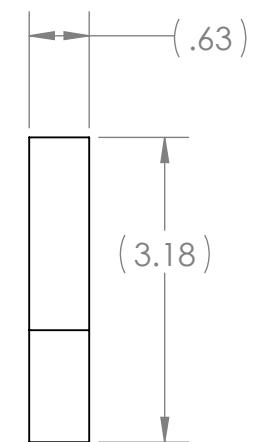
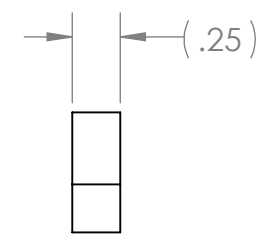
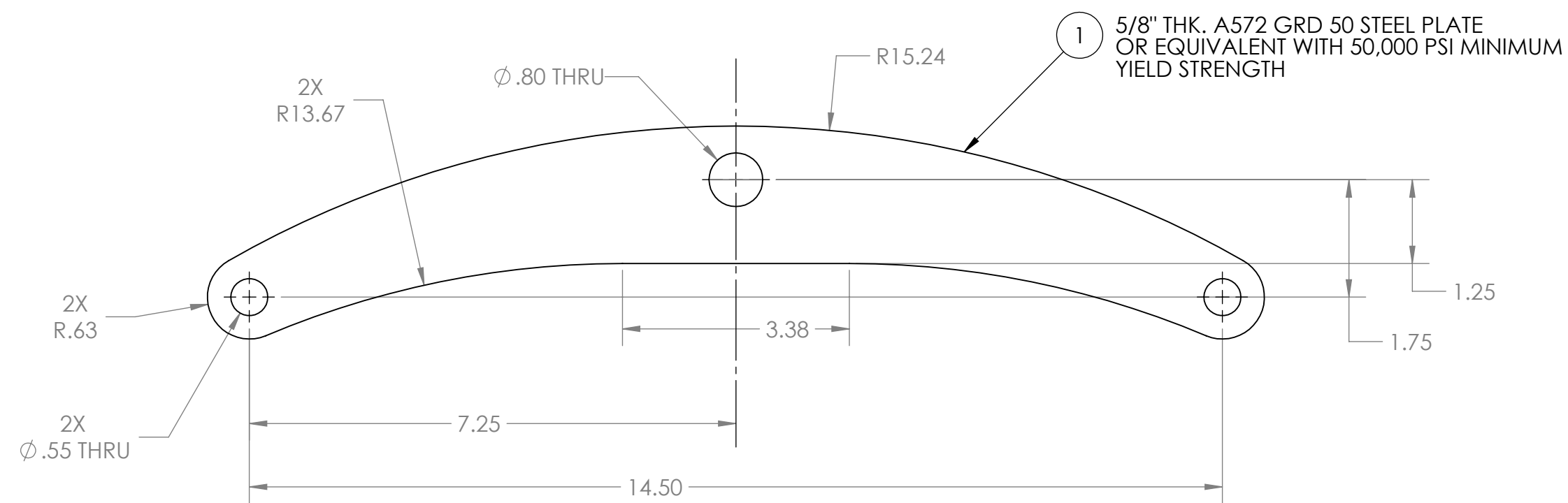
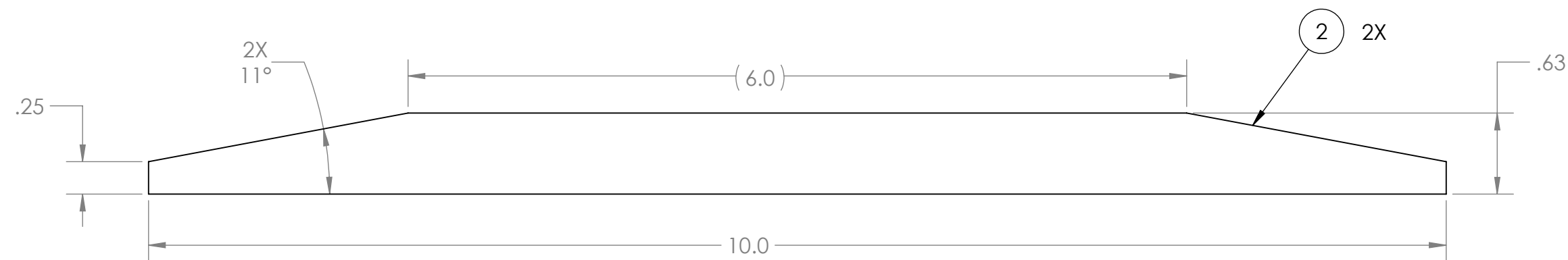
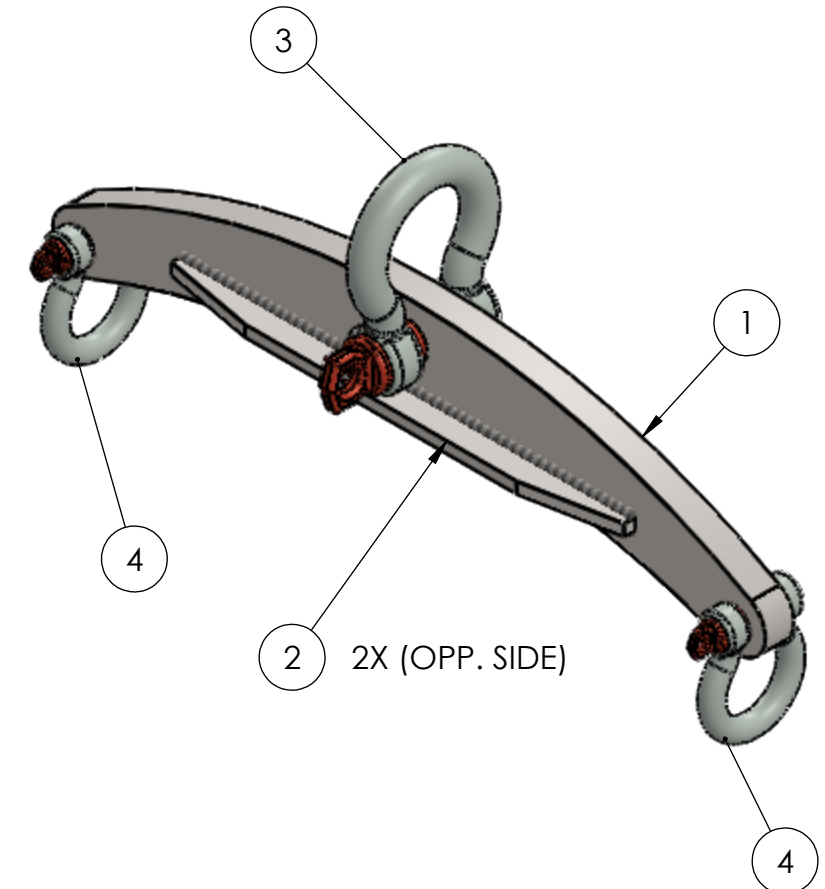
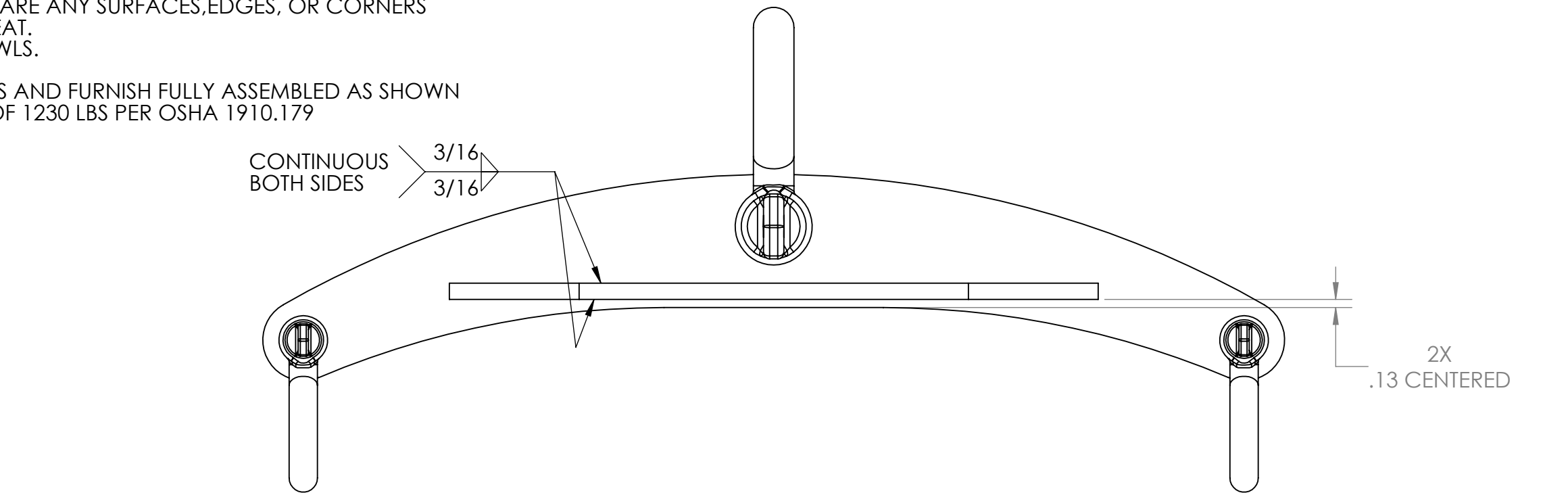


- NOTES: 1) UNLESS OTHERWISE SPECIFIED, ALL FABRICATION TOLERANCES ARE AS FOLLOWS:
 2 PLACE DECIMAL DIMENSIONS = +/- .020", 3 PLACE DECIMAL DIMENSIONS = +/- .010"
 FRACTIONAL DIMENSIONS FOR FORMED FEATURES = +/- 1/32"
 FRACTIONAL DIMENSIONS FOR WELDED FEATURES = +/- 1/16" UP TO 36", +/- 1/8" OVER 36"
 ALL RIGHT ANGLE BENDS OR WELDED CORNERS ARE TO BE ASSUMED 'SQUARE' OR 90° +/- 1°
 ALL ANGULAR DIMENSIONS ARE +/- 1° UNLESS OTHERWISE SPECIFIED.
 2) FLATTEN, STRAIGHTEN, AND MAKE SQUARE ANY SURFACES, EDGES, OR CORNERS
 PULLED OR DISTORTED FROM WELD HEAT.
 3) REMOVE ANY WELD SPLATTER OR SPAWLS.
 4) BREAK ALL SHARP EDGES.
 5) VENDOR TO SUPPLY ALL COMPONENTS AND FURNISH FULLY ASSEMBLED AS SHOWN
 6) LOAD TESTED TO A RATED CAPACITY OF 1230 LBS PER OSHA 1910.179

REV NO.	ECN NO.	ZONE	DESCRIPTION	DATE	APPRVD.
1.1			ADDED LOAD TEST CERT TO GENERAL NOTES	5/16/2022	MBR



ITEM NO.	PART NUMBER	DESCRIPTION	MATERIAL	VENDOR	VENDOR NO.	QTY.
4	---	7/16 ANCHOR SHACKLE, 1/2" PIN	GALV ALLOY STL	McMASTER CARR	3558T48	2
3	---	5/8 ANCHOR SHACKLE, 3/4" PIN	GALV ALLOY STL	McMASTER CARR	3663T43	1
2	---	SEAKEEPER 5 LIFTING BAR, CROSS MEMBER	1/4" STEEL PLATE, MIN. YIELD 50 KSI	---	---	2
1	---	SEAKEEPER 5 LOW PROFILE LIFTING BAR	5/8" STEEL PLATE, MIN YIELD 50 KSI	---	---	1

PROPRIETARY AND CONFIDENTIAL
 THE INFORMATION CONTAINED IN THIS DRAWING IS THE SOLE PROPERTY OF SEAKEEPER INCORPORATED. ANY REPRODUCTION IN PART OR AS A WHOLE WITHOUT THE WRITTEN PERMISSION OF SEAKEEPER IS PROHIBITED.

Seakeeper Inc.
 44425 Pecan Court
 Suite 151
 California, MD 20619

SEAKEEPER

NAME: SEAKEEPER 5 LOW PROFILE LIFTING BAR ASSEMBLY

WEIGHT - LBS: 0.282

MATERIAL: 5/8 STEEL MIN. YIELD 50KSI

DRAWN: WHK DATE: 14APR2015

ENG APPR: DATE:

PROD APPR: DATE:

DWG NUMBER: 80067

REV. NO. SHEET NO.: 1.1 1 OF 1